

ColonyIndustrial Expressway 95 Industrial Center

3600 Progress Drive
Bensalem Township, Pennsylvania 19020

21,706+/- Square Feet of Office Space

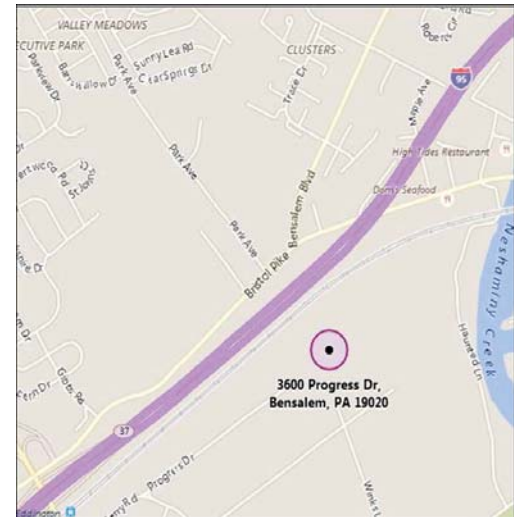


LOCATION:

- Property is ideally located in the Expressway 95 Industrial Center
- The Street Road exit off I-95 is located at the entrance to the Expressway 95 Industrial Center, providing north/south access
- Within minutes of Route 1 and the Pennsylvania Turnpike

FACILITY:

- 21,706 SF two-story office space available
- 562,560+/- SF warehouse distribution facility
- Primarily open floor plan
- 100% wet sprinkler system
- Ample car parking
- Elevator served



The Flynn Company

Michael Borski, Sr.
mborski@flynnco.com

1621 Wood Street
Philadelphia, PA 19103
Office 215.561.6565 x120
Cell 215.280.1114

The Flynn Company

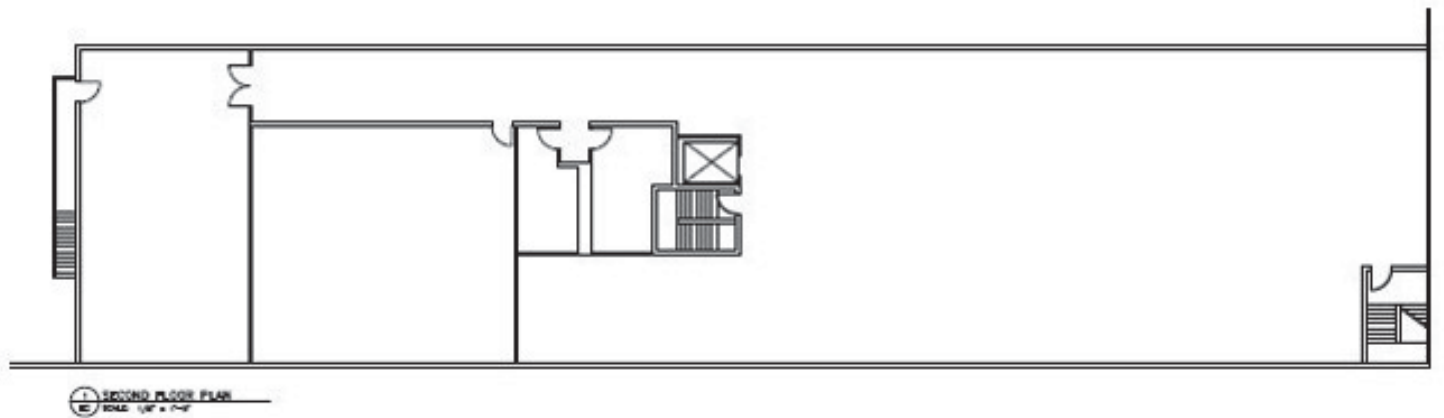
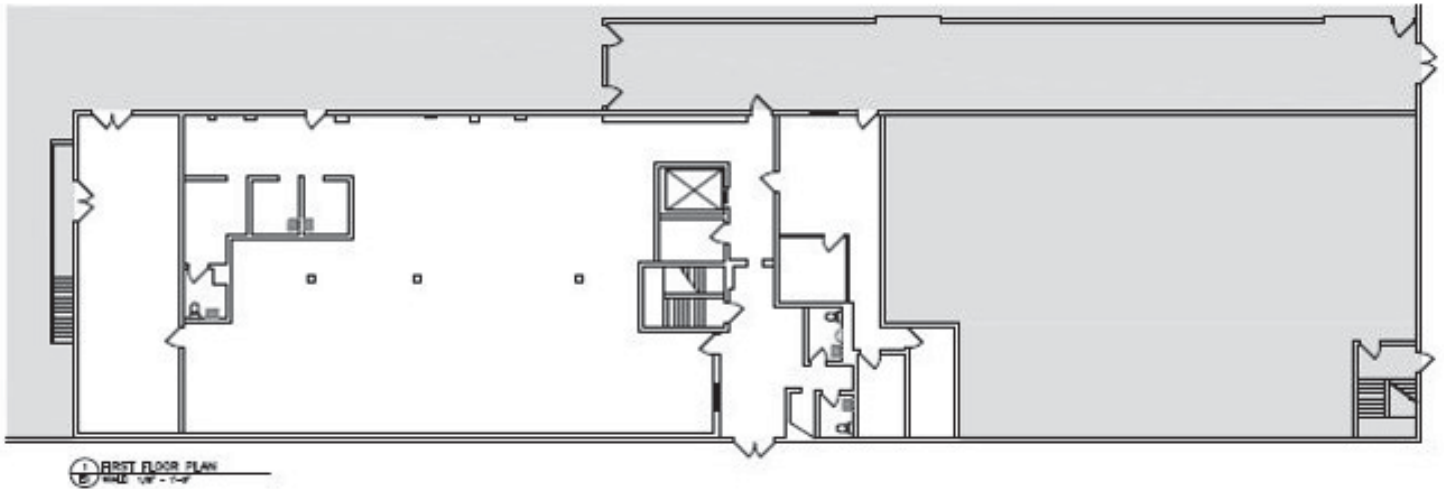
Patrick Gilmore
pgilmore@flynnco.com

1621 Wood Street
Philadelphia, PA 19103
Office 215.561.6565 x122
Cell 215.499.8003

Colony Industrial

13727 Noel Road, Suite 750
Dallas, Texas 75240
office 972.893.7000

21,706+/- Square Feet of Office Space



The
Flynn
Company

The Flynn Company

Michael Borski, Sr.
mborski@flynnco.com

1621 Wood Street
Philadelphia, PA 19103
Office 215.561.6565 x120
Cell 215.280.1114

The Flynn Company

Patrick Gilmore
pgilmore@flynnco.com

1621 Wood Street
Philadelphia, PA 19103
Office 215.561.6565 x122
Cell 215.499.8003

Colony Industrial

13727 Noel Road, Suite 750
Dallas, Texas 75240
office 972.893.7000