



Anticipated Availability Date April 1, 2026

Premises ± 1,492 RSF

Rate Negotiable

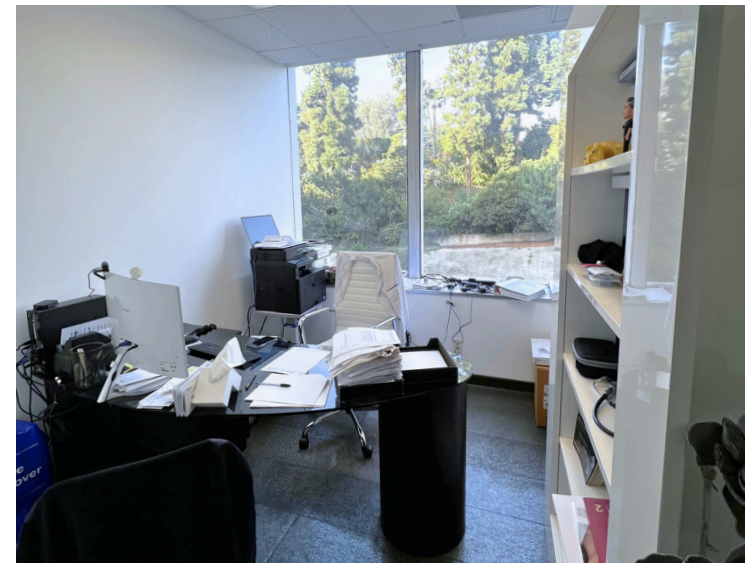
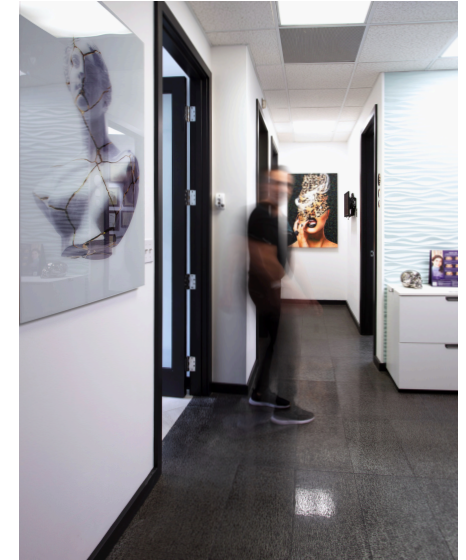
Term Dec 31, 2027

- Dentist or Surgical Center
- Light and Bright Space
- Super-efficient Space
- Reception/Waiting Area
- Private Rooms
- X-Ray Room
- Premiere Sunset and Doheny Location
- Close to Cedars-Sinai Medical Center
- On-site Secured Tenant and Visitor Parking
- Equipment and Furniture Not Included

Jeff Lipson
310.202.9008 x 113
jlipson@wilshireag.com
DRE# 01196852



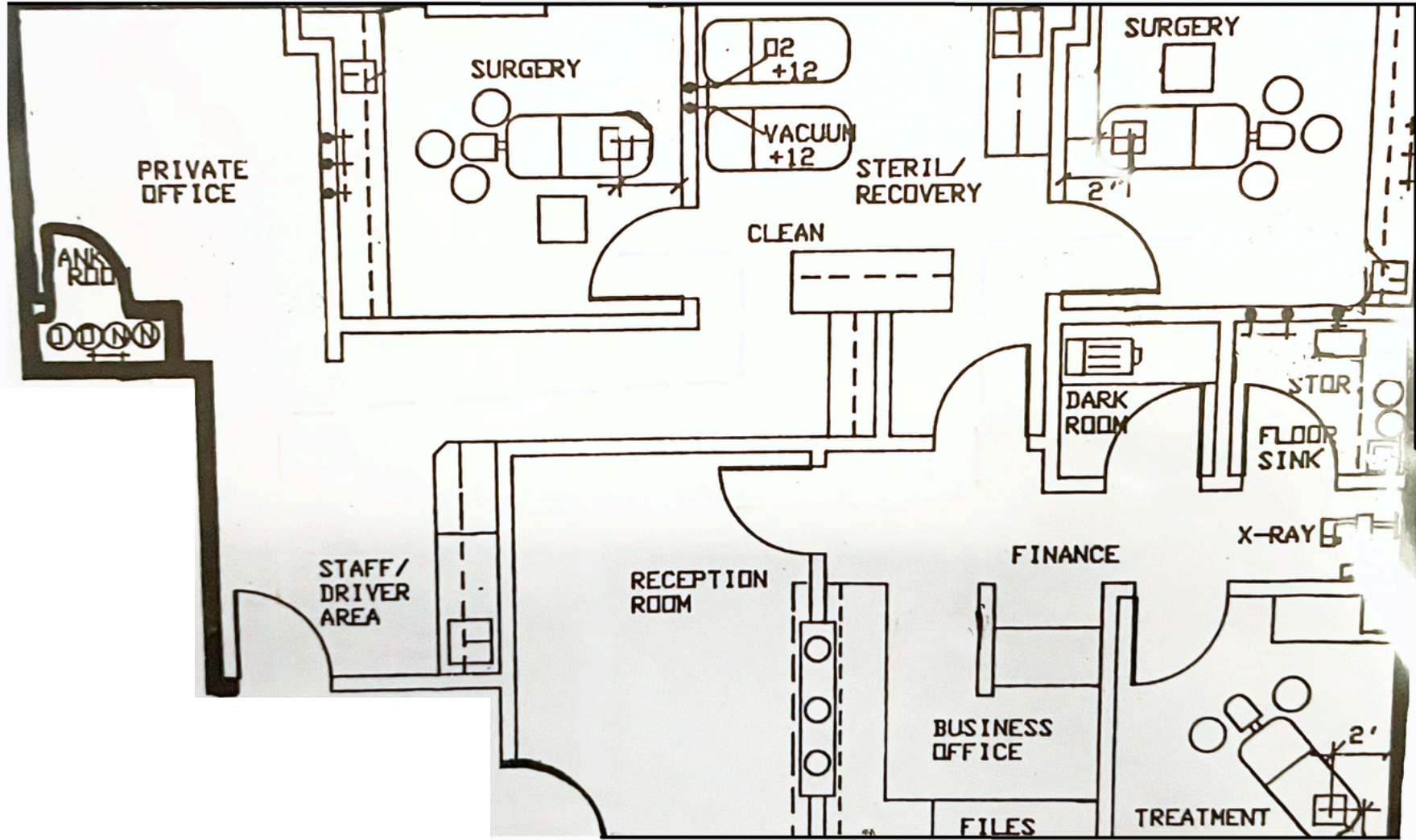
Kiersten Echon
310.202.9008 x 136
kiersten@wilshireag.com
DRE# 02339219



Jeff Lipson
310.202.9008 x 113
jlipson@wilshireag.com
DRE# 01196852



Kiersten Echon
310.202.9008 x 136
kiersten@wilshireag.com
DRE# 02339219



Jeff Lipson
310.202.9008 x 113
jlipson@wilshireag.com
DRE# 01196852



Kiersten Echon
310.202.9008 x 136
kiersten@wilshireag.com
DRE# 02339219