

CAMPUS ON NORTH FIRST

±256,056SF R&D CAMPUS

2515 - 2545 NORTH FIRST, SAN JOSE



NEWMARK

JOE KELLY

408.987.4111 / joe.kelly@nrmk.com
CA RE Lic #01420963

JON MACKEY

408.987.4129 / jon.mackey@nrmk.com
CA RE Lic #01362376

JEFF ARRILLAGA

408.982.8478 / jeff.arrillaga@nrmk.com
CA RE Lic #00935379

CAMPUS ON NORTH FIRST

Campus on North First is a four building ±256,056 square foot R&D campus located in the heart of the Golden Triangle in North San Jose. Global brands such as Apple, Google, Microsoft and Paypal are located adjacent to the project, validating this as one of the most desirable areas in Silicon Valley.



Premium Silicon Valley location



Campus identity



5 minutes from San Jose International Airport



Proximity to talent



Short walk to amenities



Adjacent to light rail station



Building / monument signage



Convenient access to multiple highways



CAMPUS ON NORTH FIRST

 **Microsoft**
21 ACRES

 **Apple**
85 ACRES

SITE PLAN

BLDG 1 2525 NORTH FIRST
±75,432


BLDG 2 2535 NORTH FIRST
±62,280

BLDG 3 2535 NORTH FIRST
±62,784

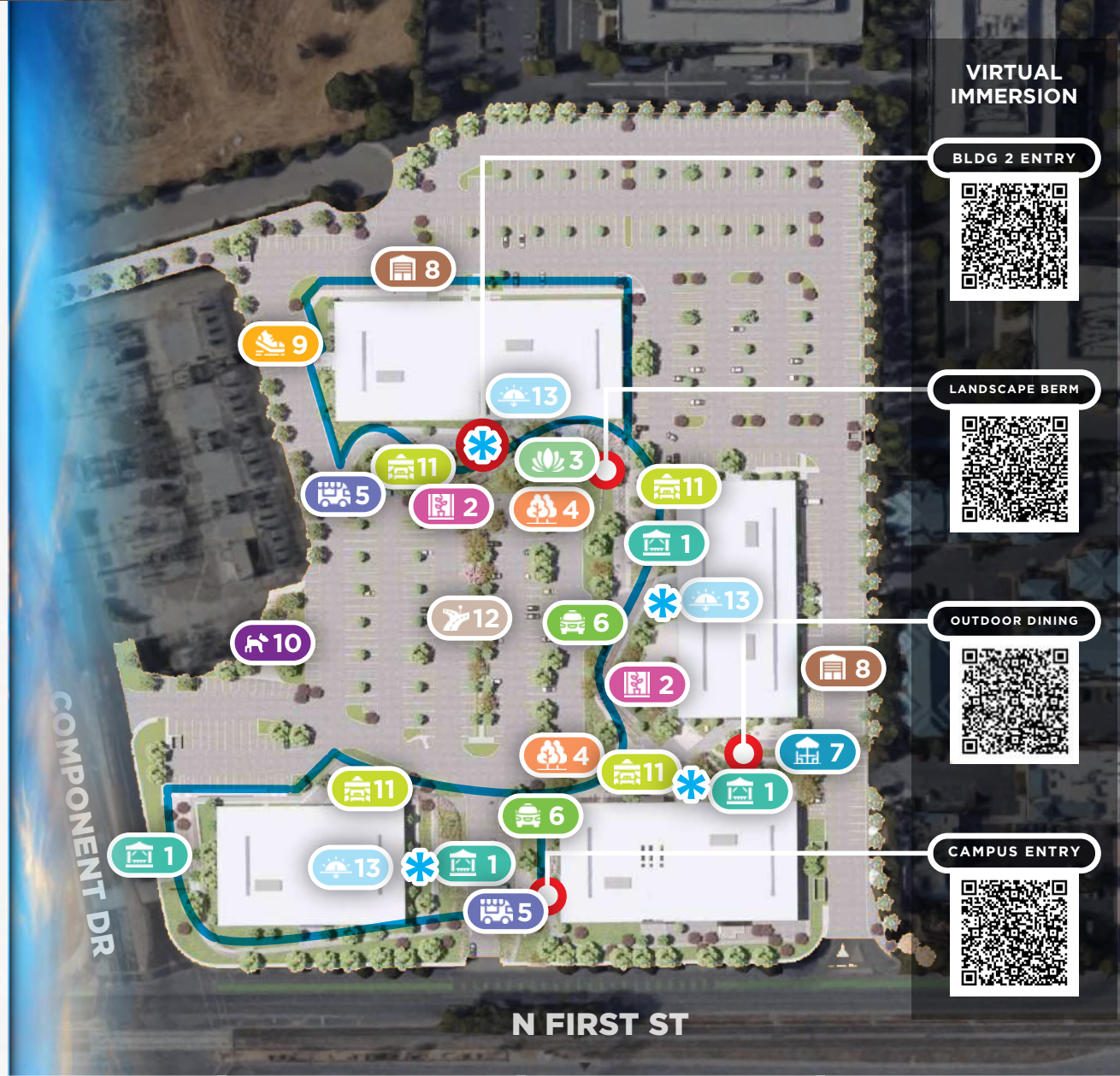
BLDG 4 2515 NORTH FIRST
±49,560

CAMPUS ON NORTH FIRST

PROPOSED SITE PLAN

 proposed main building entries

-  1 shade canopy
-  2 shade trellis and parking screen
-  3 meditation garden & all hands meeting area
-  4 landscape berm feature
-  5 food truck parking
-  6 passenger & rideshare dropoff
-  7 outdoor cafe
-  8 new loading dock utilizing existing 9'x12' window opening
-  9 1km fitness loop
-  10 dog park
-  11 outdoor work cabanas
-  12 central parking walkway to bldg entry
-  13 proposed skylights



VIRTUAL IMMERSION

BLDG 2 ENTRY



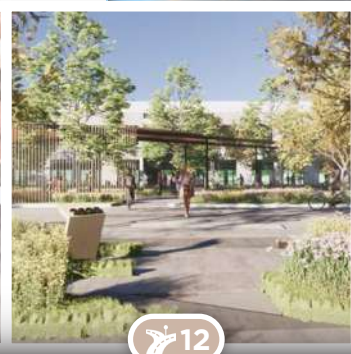
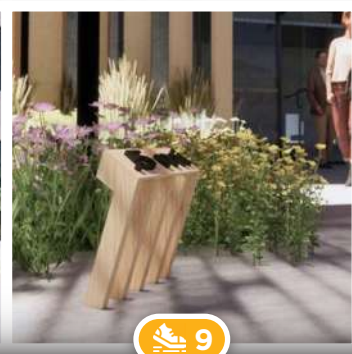
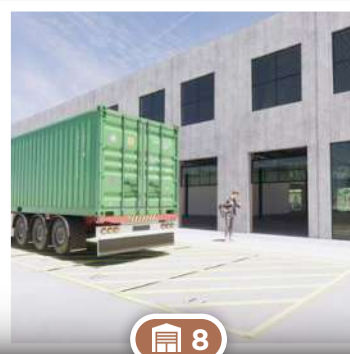
LANDSCAPE BERM



OUTDOOR DINING



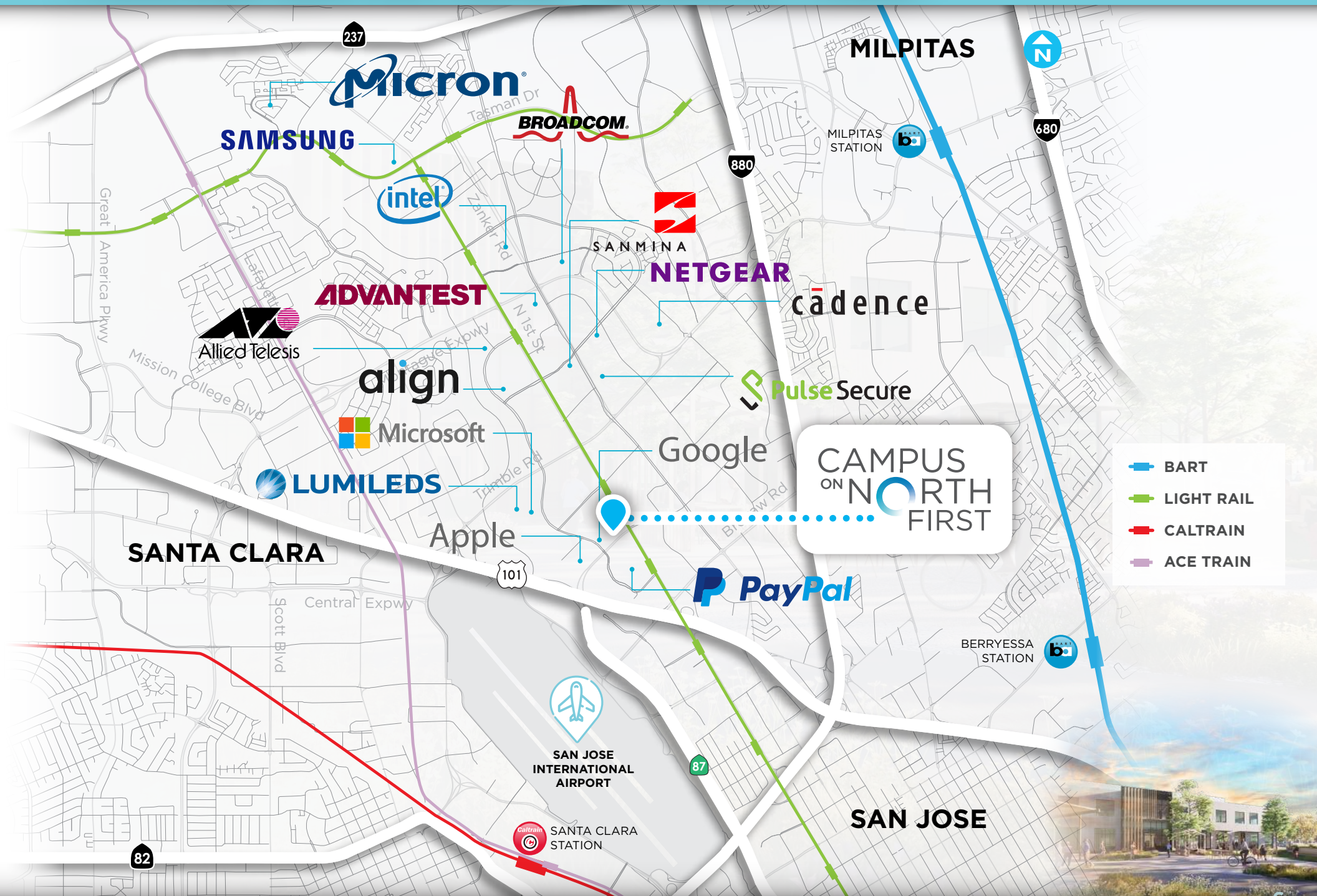
CAMPUS ENTRY



AMENITIES MAP



TRANSPORTATION/TENANT MAP



- BART
- LIGHT RAIL
- CALTRAIN
- ACE TRAIN

CAMPUS ON NORTH FIRST

CAMPUS ON NORTH FIRST



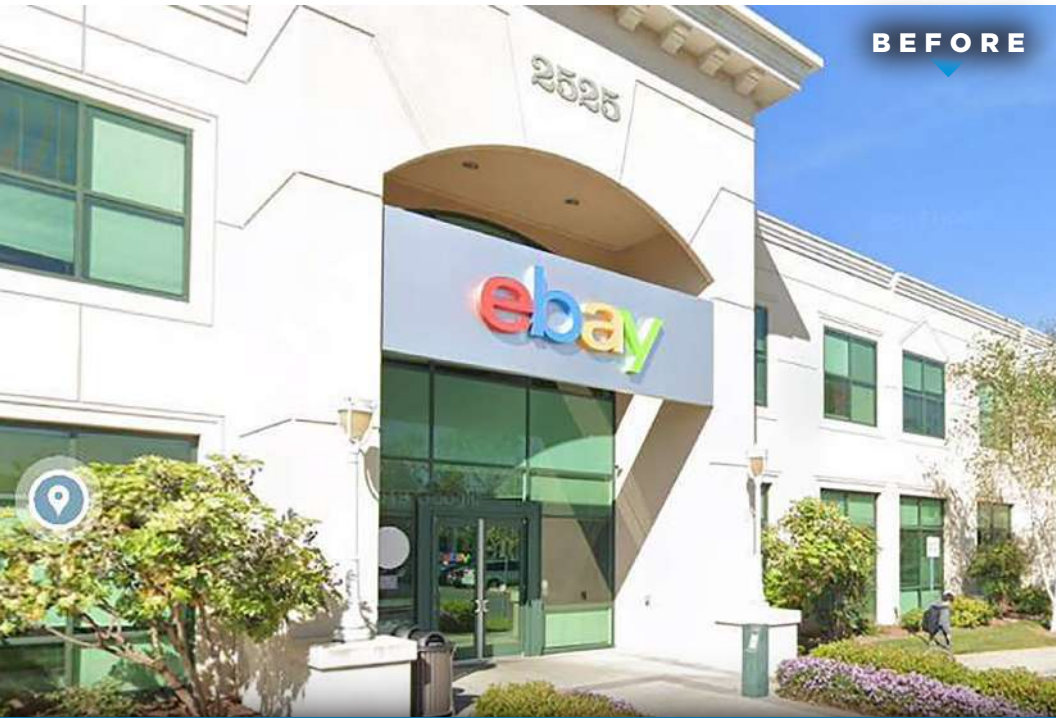
EXTERIOR RENDERINGS



BEFORE



AFTER



BEFORE



AFTER

CAMPUS ON NORTH FIRST



EXTERIOR RENDERINGS



CAMPUS ON NORTH FIRST



INTERIOR RENDERINGS

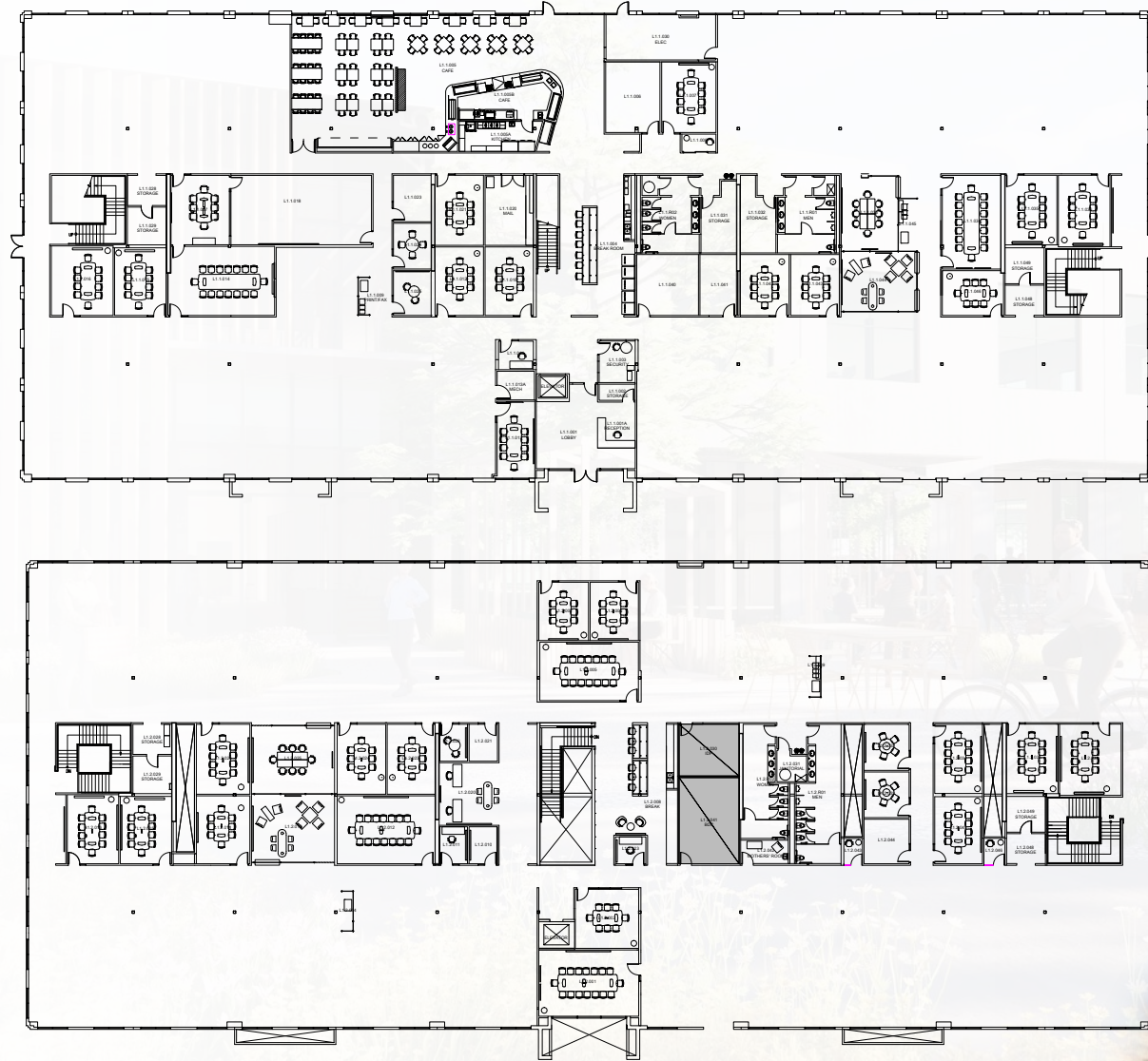


FLOORPLAN

BLDG
1

2525 N FIRST ST

±75,432 SF

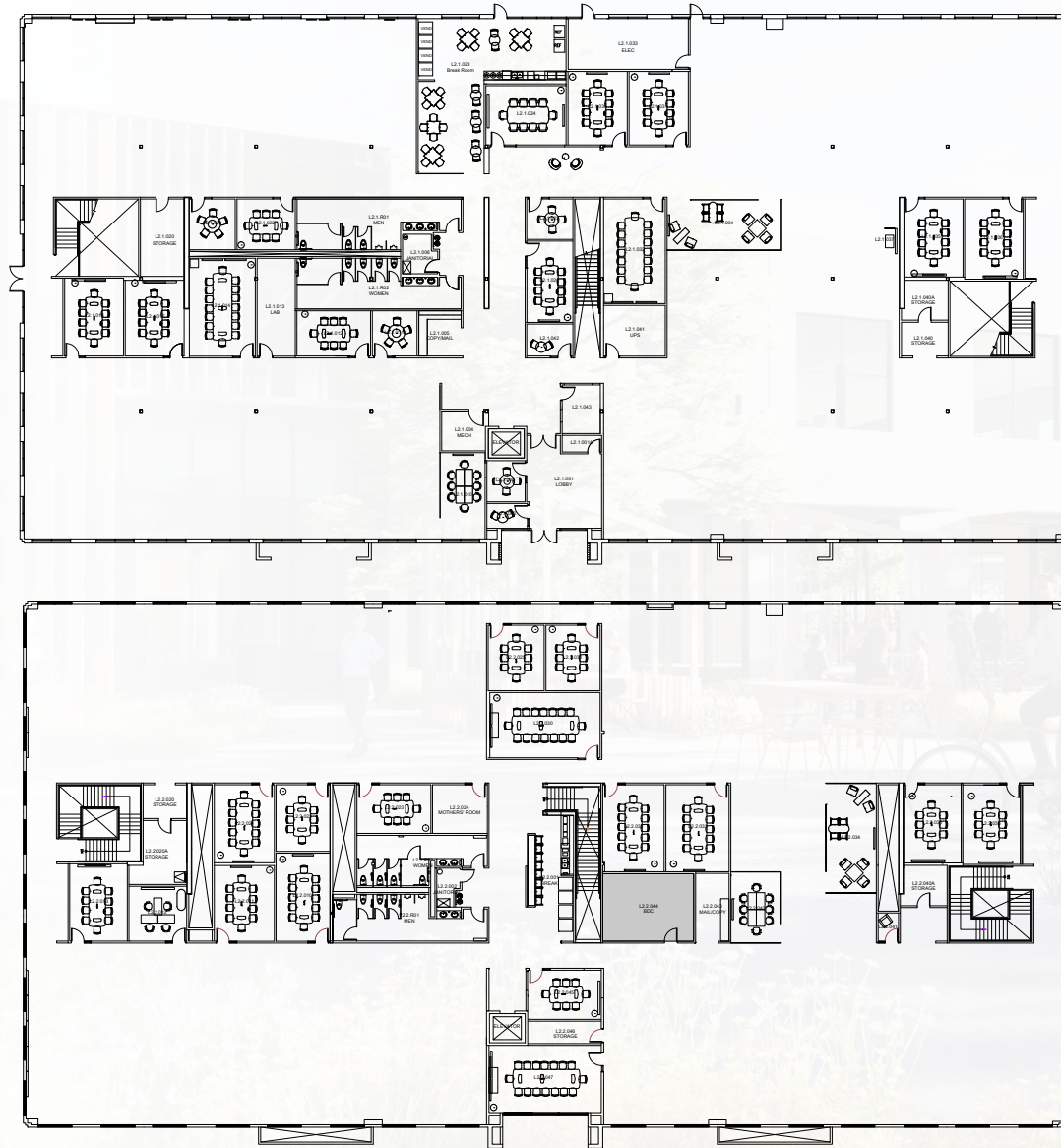


FLOORPLAN

BLDG
2

2535 N FIRST ST

±62,280 SF

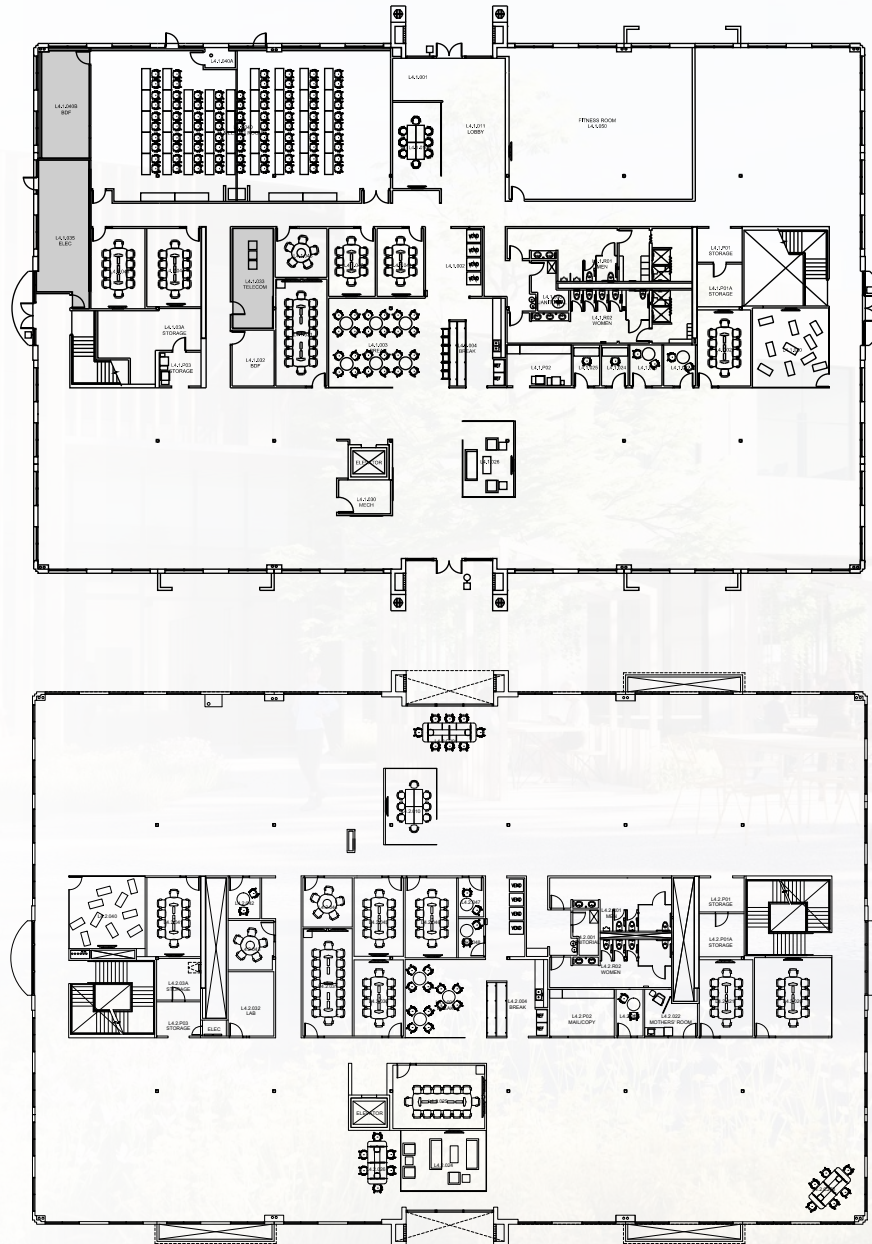


FLOORPLAN

BLDG 4

2515 N FIRST ST

±49,560 SF



CAMPUS ON NORTH FIRST



CAMPUS ON NORTH FIRST



CAMPUS ON NORTH FIRST

±256,056SF R&D CAMPUS

2515 - 2545 NORTH FIRST, SAN JOSE

The distributor of this communication is performing acts for which a real estate license is required. The information contained herein has been obtained from sources deemed reliable but has not been verified and no guarantee, warranty or representation, either express or implied, is made with respect to such information. Terms of sale or lease and availability are subject to change or withdrawal without notice. **21-0533 • 10 /21**

NEWMARK

JOE KELLY

408.987.4111 / joe.kelly@nrmk.com
CA RE Lic #01420963

JON MACKAY

408.987.4129 / jon.mackey@nrmk.com
CA RE Lic #01362376

JEFF ARRILLAGA

408.982.8478 / jeff.arrillaga@nrmk.com
CA RE Lic #00935379