

459 Dual Blvd Isanti, MN



- 6250 SF for Lease
- Built in 1994
- Insulated Steel Wall
- Steel Roof
- 16 ft Ceiling Height - 15+ ft Clean Height
- 600 AMPS 208/480 volts power
- 12 Dedicated parking spaces in a shared lot
- 2 Drive-in Doors
 - 1 - 10ft
 - 1 - 14ft
- New Roof
- New HVAC
- All new LED lighting
- Lease Rate: \$10-14psf
- CAM & Tax Rate: TBD

Contact:

Nik Anderson
COMMERCIAL AGENT

651.497.7222 direct 763.689.0349 office 763.552.5754 fax
Nik@ricproperty.com

Contact:

Matt Anderson
COMMERCIAL BROKER

612.327.2977 direct 763.689.0349 office 763.552.5754 fax
Matt@ricproperty.com

Local Retail



Contact:

Nik Anderson
COMMERCIAL AGENT

651.497.7222 direct 763.689.0349 office 763.552.5754 fax

Nik@ricproperty.com

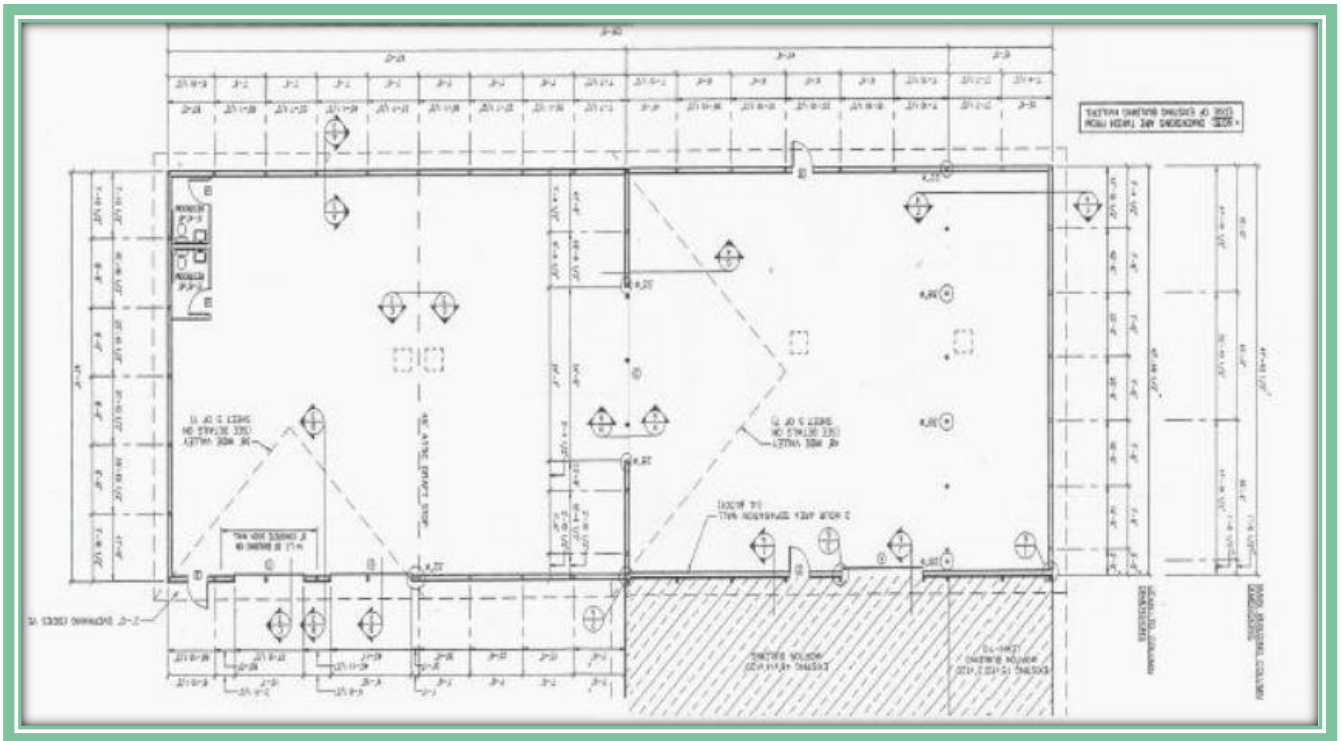
Contact:

Matt Anderson
COMMERCIAL BROKER

612.327.2977 direct 763.689.0349 office 763.552.5754 fax

Matt@ricproperty.com

Floor Plans



Contact:

Nik Anderson
COMMERCIAL AGENT

651.497.7222 direct 763.689.0349 office 763.552.5754 fax

Nik@ricproperty.com

Contact:

Matt Anderson
COMMERCIAL BROKER

612.327.2977 direct 763.689.0349 office 763.552.5754 fax

Matt@ricproperty.com

Interior Photos



Contact:

Nik Anderson
COMMERCIAL AGENT

651.497.7222 direct 763.689.0349 office 763.552.5754 fax

Nik@ricproperty.com

Contact:

Matt Anderson
COMMERCIAL BROKER

612.327.2977 direct 763.689.0349 office 763.552.5754 fax

Matt@ricproperty.com



DEMOGRAPHICS

	3 MILES	5 MILES	10 MILES
POPULATION	9,006	17,866	50,201
MEDIAN HH INCOME	\$73,693	\$73,272	\$76,534

TRAFFIC COUNTS

HWY 65 AT COUNTY RD 5	18,900 CARS PER DAY
COUNTY RD 5 AT DUAL BLVD	1050-1550 CARS PER DAY
HWY 65 AT CAJIMA	18,900 CARS PER DAY

Contact:

Nik Anderson
COMMERCIAL AGENT

651.497.7222 direct 763.689.0349 office 763.552.5754 fax

Nik@ricproperty.com

Contact:

Matt Anderson
COMMERCIAL BROKER

612.327.2977 direct 763.689.0349 office 763.552.5754 fax

Matt@ricproperty.com