

SITE

Sowell Road

MADISON, MS 39110

FOR SALE
±5 Acres - Madison, MS

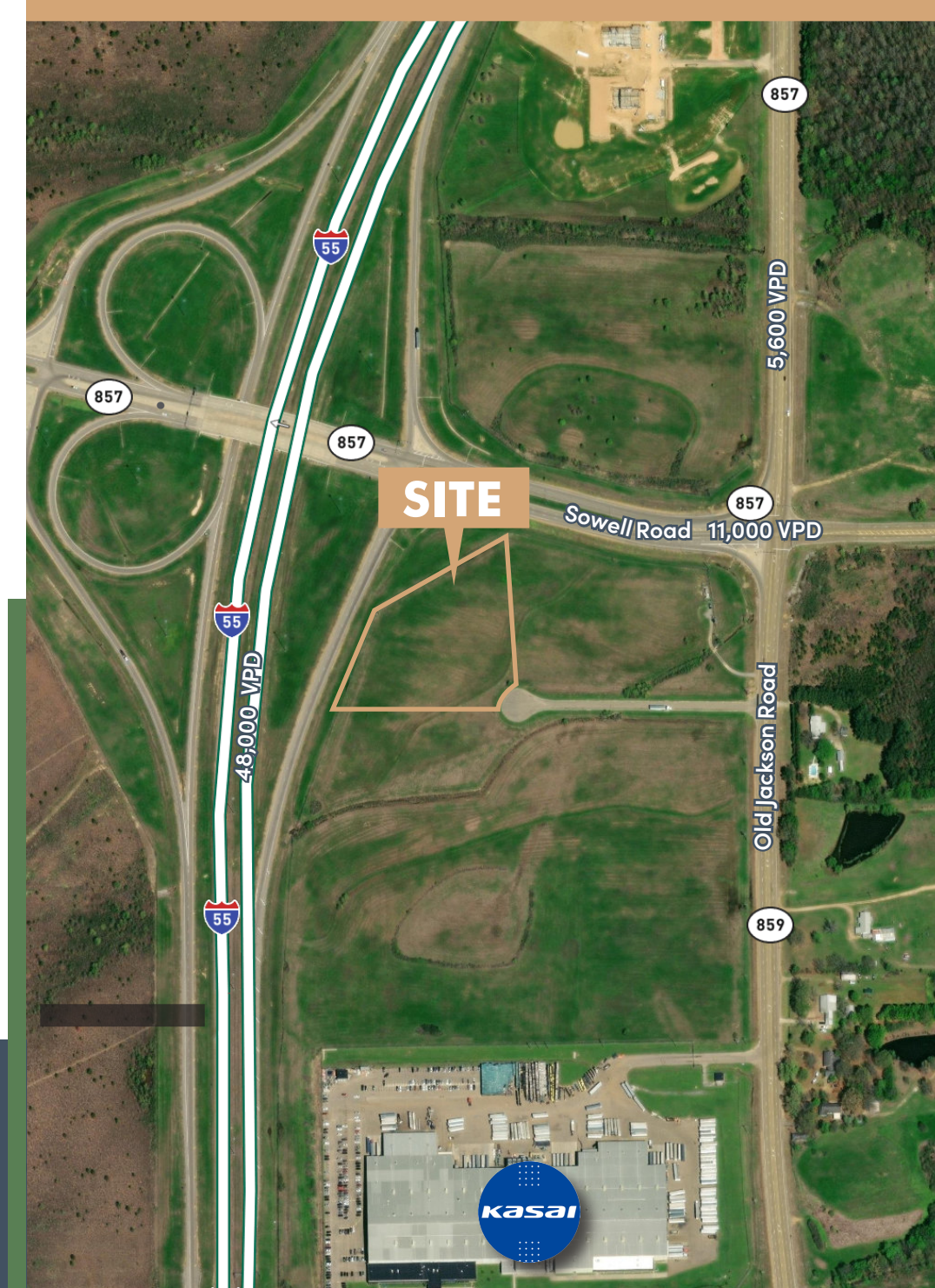
Property Specifications

DESCRIPTION

- 1 ASKING PRICE**
\$6.50 per square foot
- 2 I-55 ROAD FRONTAGE**
±460 Feet
- 3 I-55 VEHICLES PER DAY**
48,000
- 4 PROXIMITY TO I-55**
Directly adjacent
- 5 PROXIMITY TO NISSAN NORTH AMERICA**
±2.3 miles south
- 6 HIGH VISIBILITY**
I-55 Frontage Road
- 7 EASY ACCESS VIA OLD JACKSON ROAD**
Cul-de-sac to the property

± 5 ACRES

Zoned I-1; Light Industrial;
Madison County



SOWELL ROAD

MADISON, MS 39110



CONTACTS

GUY PARKER III, CCIM

First Vice President

+1 601 936 7135

guy.parker@cbre.com

© 2024 CBRE, Inc. All rights reserved. This information has been obtained from sources believed reliable but has not been verified for accuracy or completeness. CBRE, Inc. makes no guarantee, representation or warranty and accepts no responsibility or liability as to the accuracy, completeness, or reliability of the information contained herein. You should conduct a careful, independent investigation of the property and verify all information. Any reliance on this information is solely at your own risk. CBRE and the CBRE logo are service marks of CBRE, Inc. All other marks displayed on this document are the property of their respective owners, and the use of such marks does not imply any affiliation with or endorsement of CBRE. Photos herein are the property of their respective owners. Use of these images without the express written consent of the owner is prohibited.