



CUSHMAN &
WAKEFIELD



FOR LEASE

**550 EAST SOUTH TEMPLE
SALT LAKE CITY, UT**



**NEVER-BEFORE OFFERED
SOUTH TEMPLE OFFICE SPACE**

**FULL EAST BUILDING UP TO
±63,790 RSF AVAILABLE**

**ABLE TO DEMISE TO FULL FLOORS;
RANGING FROM 11,576 RSF TO 21,452 RSF**

\$21.00/RSF, Full-Service

Contact

Mike Richmond

Executive Managing Director
+1 801 303 5434
mike.richmond@cushwake.com

Dana Baird, ccim

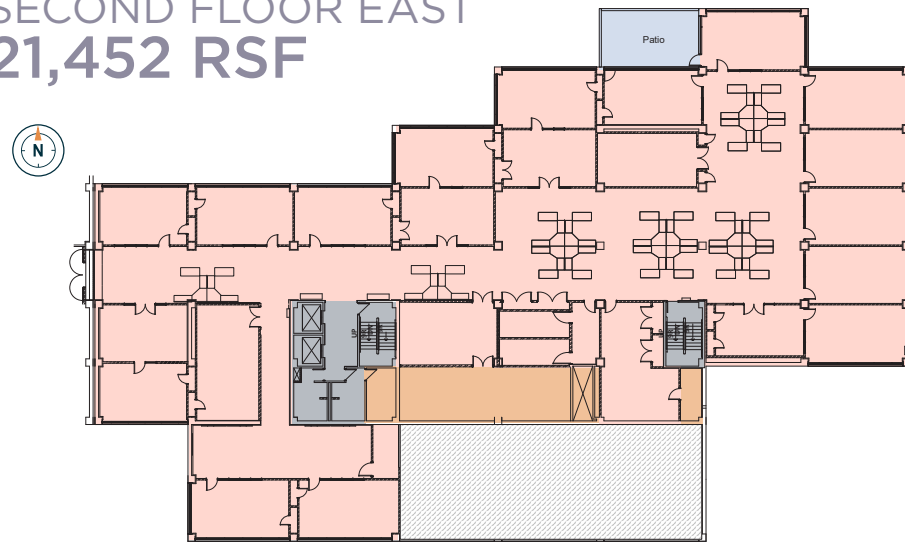
Executive Managing Director
+1 801 303 5526
dana.baird@cushwake.com

**PRESTIGIOUS SOUTH TEMPLE LOCATION
NEARLY 65,000 RSF AVAILABLE**

**FIRST FLOOR EAST
16,577 RSF**



**SECOND FLOOR EAST
21,452 RSF**



Key Features:

- Outdoor patios and balconies
- Covered/structured parking
- Shared fitness facility with lockers and showers
- Shared conference rooms and training spaces
- On-site dining/cafeteria
- Secured building access with camera monitoring
- Furniture available



LANDSCAPED GROUNDS



SHARED CONFERENCE ROOM



PRIVATE OFFICE



SHARED BUILDING LOBBY



FITNESS CENTER



LOCKER ROOMS WITH SHOWERS

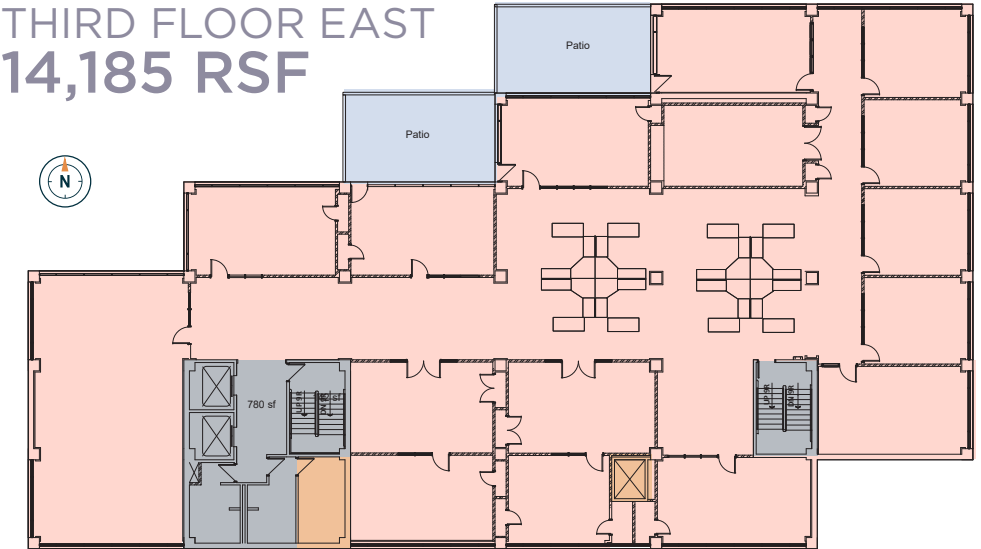


UNDERGROUND PARKING

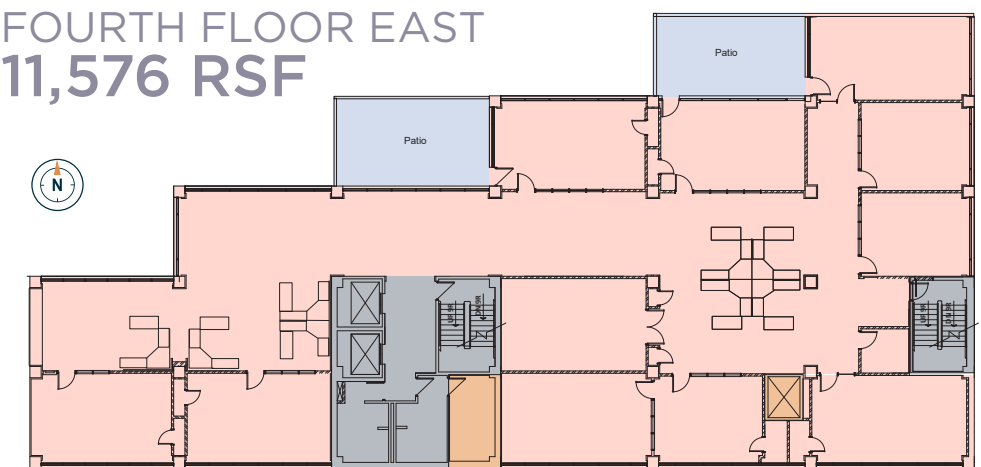


ON-SITE DINING/CAFETERIA

**THIRD FLOOR EAST
14,185 RSF**



**FOURTH FLOOR EAST
11,576 RSF**



LEGEND

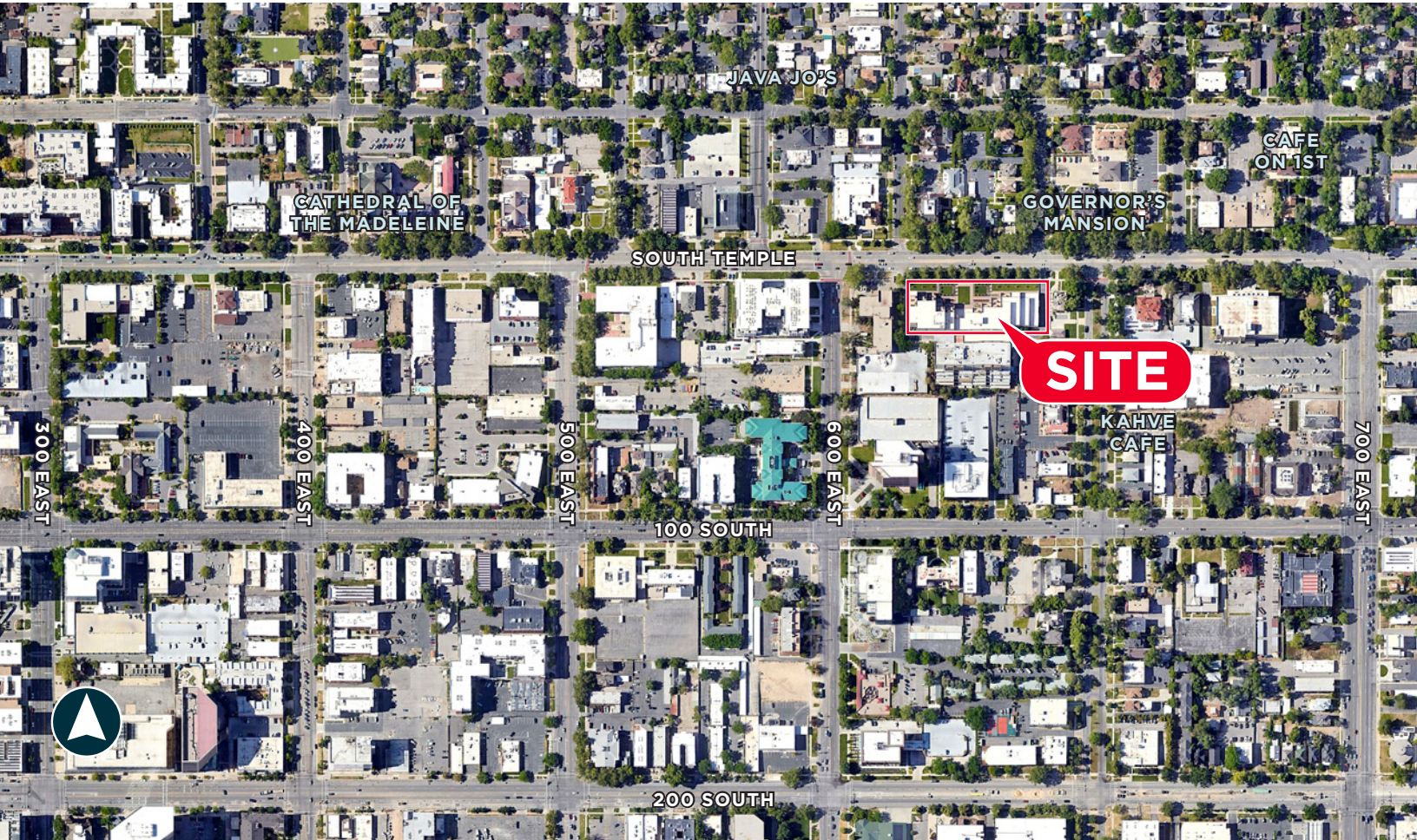
- Shared Tenant Amenities
- Leaseable Tenant Space
- Electrical/Mechanical Space
- Building Services
- Tenant Balconies

CONTACT

Mike Richmond
Executive Managing Director
+1 801 303 5434
mike.richmond@cushwake.com

Dana Baird, ccim
Executive Managing Director
+1 801 303 5526
dana.baird@cushwake.com

FOR LEASE
550 EAST SOUTH TEMPLE
SALT LAKE CITY, UT



Contact

Mike Richmond
Executive Managing Director
+1 801 303 5434
mike.richmond@cushwake.com

Dana Baird, ccim
Executive Managing Director
+1 801 303 5526
dana.baird@cushwake.com

170 South Main Street
Suite 1600
Salt Lake City, UT 84101
+1 801 322 2000
cushmanwakefield.com

Cushman & Wakefield Copyright 2019. No warranty or representation, express or implied, is made to the accuracy or completeness of the information contained herein, and same is submitted subject to errors, omissions, change of price, rental or other conditions, withdrawal without notice, and to any special listing conditions imposed by the property owner(s). As applicable, we make no representation as to the condition of the property (or properties) in question.
(path: G:\UT\SL1\Shared\Apps\Gigas\1 - Projects\Richmond, Mike\1 - Flyers\550EastSouthTemple)