

PMZ
SINCE 1957

COMMERCIAL
REAL ESTATE

For Sale \$795,000

1025 14th St Modesto CA 95354



To discuss your property or any commercial real estate needs please contact:

PMZCommercial.com

JORDAN AMARANT

DRE# 01911219

209.345.8209 | jamarant@pmz.com

Pam Harmon

DRE # 01046296

209.345.2203

1025 14th St Modesto CA

APN: 105-016-002

Building Size: 2,937 SF

Lot Size: 0.16 ac lot

Highlights

- Excellent Downtown Office
- Recent Renovations
- Great Condition
- 5 Private Offices



To discuss your property or any commercial real estate needs please contact:

PMZCommercial.com

JORDAN AMARANT

DRE# 01911219

209.345.8209 | jamarant@pmz.com

Pam Harmon

DRE # 01046296

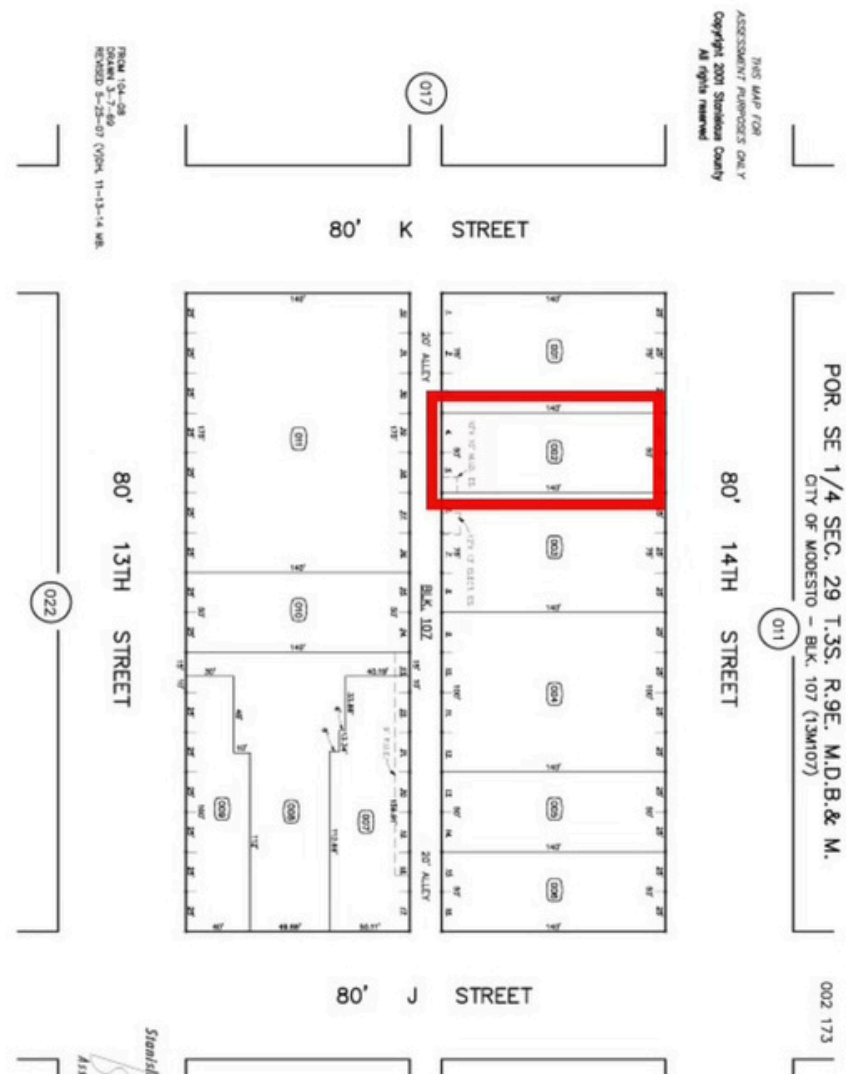
209.345.2203

Property Description

Beautiful downtown Modesto office. Can work for a variety of business uses and sure to impress clients and staff. Building has been upgraded and remodeled with excellent architectural features and quality construction.

5 private offices, large conference room, large admin reception desk and work area, bullpen for additional staff or flex space, one restroom, copy and storage room, server and storage closet, break room, courtyard, private parking with 7 stalls.

Great downtown location walking distance to restaurants and easy access to freeway.



To discuss your property or any commercial real estate needs please contact:

PMZCommercial.com

JORDAN AMARANT

DRE# 01911219

209.345.8209 | jamarant@pmz.com

Pam Harmon

DRE # 01046296

209.345.2203



To discuss your property or any commercial real estate needs please contact:

PMZCommercial.com

JORDAN AMARANT

DRE# 01911219
209.345.8209 | jamarant@pmz.com

Pam Harmon

DRE # 01046296
209.345.2203



To discuss your property or any commercial real estate needs please contact:

PMZCommercial.com

JORDAN AMARANT

DRE# 01911219

209.345.8209 | jamarant@pmz.com

Pam Harmon

DRE # 01046296

209.345.2203



To discuss your property or any commercial real estate needs please contact:

PMZCommercial.com

JORDAN AMARANT

DRE# 01911219
209.345.8209 | jamarant@pmz.com

Pam Harmon

DRE # 01046296
209.345.2203



To discuss your property or any commercial real estate needs please contact:

PMZCommercial.com

JORDAN AMARANT

DRE# 01911219
209.345.8209 | jamarant@pmz.com

Pam Harmon

DRE # 01046296
209.345.2203