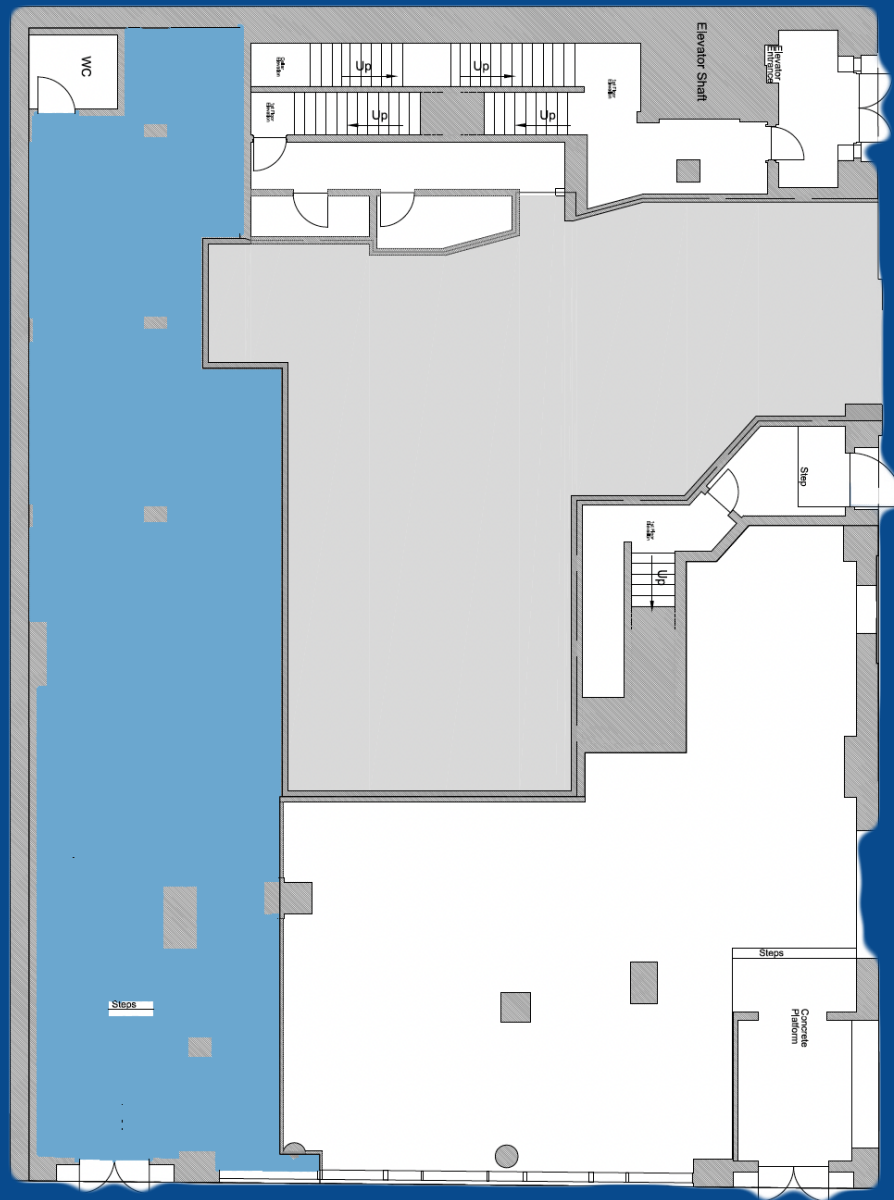




2255 BROADWAY

2255 BROADWAY



WEST 81ST

BROADWAY

SQUARE FOOTAGE - 2,111 SF

CEILING HEIGHT : 15 FEET

FRONTAGE : 21 FEET

POSSESSION - IMMEDIATE

ASKING PRICE – UPON REQUEST

FRONTAGE - 21 FEET ON BROADWAY

NEIGHBORS

ZABAR'S

BARNES & NOBLE

BANK OF AMERICA

ONE MEDICAL

2255 BROADWAY



MICHAEL CLEEMAN
President

O 646.693.0936
E michael@cleeman.com

ALTHOUGH ALL INFORMATION REGARDING PROPERTY FOR SALE, RENTAL OR FINANCING IS FROM SOURCES DEEMED RELIABLE SUCH INFORMATION HAS NOT BEEN VERIFIED, AND NO EXPRESS REPRESENTATION IS MADE NOR IS ANY TO BE IMPLIED AS TO THE ACCURACY THEREOF, AND IT IS SUBMITTED SUBJECT TO ERRORS, OMISSIONS, CHANGE OF PRICE, RENTAL OR OTHER CONDITIONS, PRIOR SALE, LEASE OR FINANCING, OR WITHDRAWAL WITHOUT NOTICE.

