



**AVAILABLE FOR SALE**

4,395 SF

**1327 Old York Road**  
Abington, PA 19001



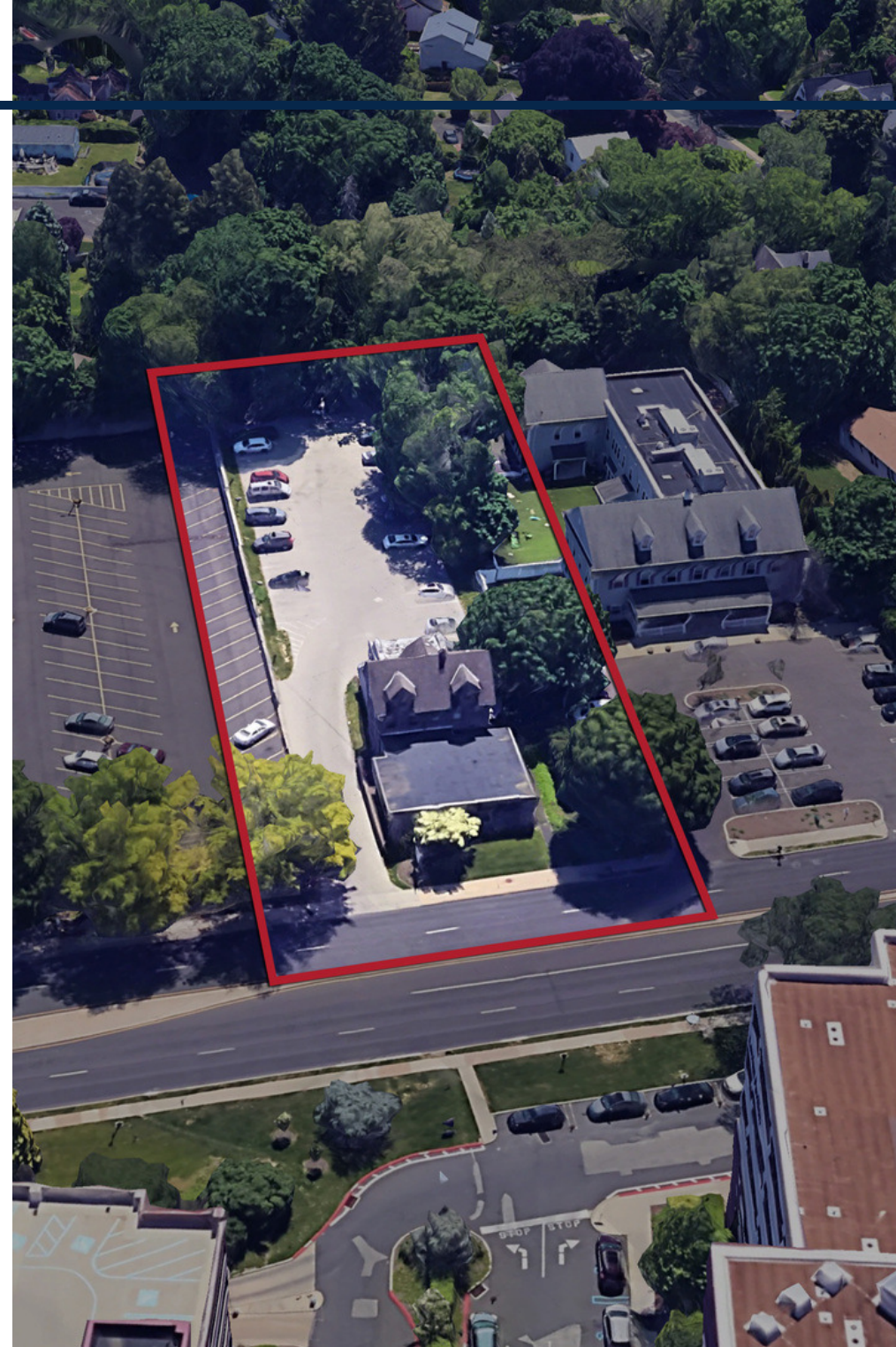
 **BINSWANGER**  
UNIQUELY SPECIALIZED SINCE 1931



# PROPERTY DETAILS

## HIGHLIGHTS

- 4,395 SF Freestanding Medical-Office Building
- Traffic Count of 28,077 Vehicles per Day
- 1st Floor is ADA Accessible
- R-4 Abington Township (Medium-High Density Residential Zoning District)
- Great Owner-User Opportunity
- 34 parking Spaces on a 0.61 - Acre Lot
- Located on Old York Road (PA Route 611) directly across from Abington Hospital (Jefferson Health)





# RETAILER MAP





## ADDITIONAL PHOTOS







**BINSWANGER**  
UNIQUELY SPECIALIZED SINCE 1931

**Three Logan Square**  
1717 Arch Street, Suite 5100  
Philadelphia, PA 19103  
<https://www.binswanger.com>

## PRIMARY CONTACTS



**Douglas Kelly**  
Vice President  
610.278.1270  
[dkelly@binswanger.com](mailto:dkelly@binswanger.com)

