

APACHE JUNCTION MEDICAL PLAZA

2080 W SOUTHERN AVE | Apache Junction, AZ 85120



AVAILABLE FOR LEASE



- Adjacent to Banner Goldfield Medical Center
- Covered reserved physician parking
- Excellent visibility with monument signage available
- Tenants include general and cosmetic dentistry, urgent care, chiropractic, imaging and Federal Health Clinic
- Located in a medically underserved area



FOR MORE INFORMATION:

TRACY ALTEMUS
602.206.6474 | taltemus@REsourcecmcl.com

REsourcecmcl.com



APACHE JUNCTION MEDICAL PLAZA

2080 W SOUTHERN AVE | Apache Junction, AZ 85120

Contiguous to 11,635 sf

PROPERTY SPECS

LEASE RATE	NEGOTIABLE
BUILDING SIZE	26,901 SF
TI'S	NEGOTIABLE
ESCALATIONS	CPI
LOAD FACTOR	NONE
PARKING RATIO	5/1,000 SF
SUITE B-6	2,539 RSF
SUITE B-10	9,096 RSF <i>Available on 1-1-23</i>
	CONTIGUOUS TO 11,635 SF

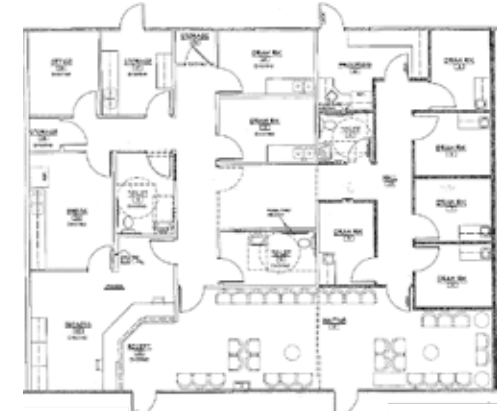


FOR MORE INFORMATION:

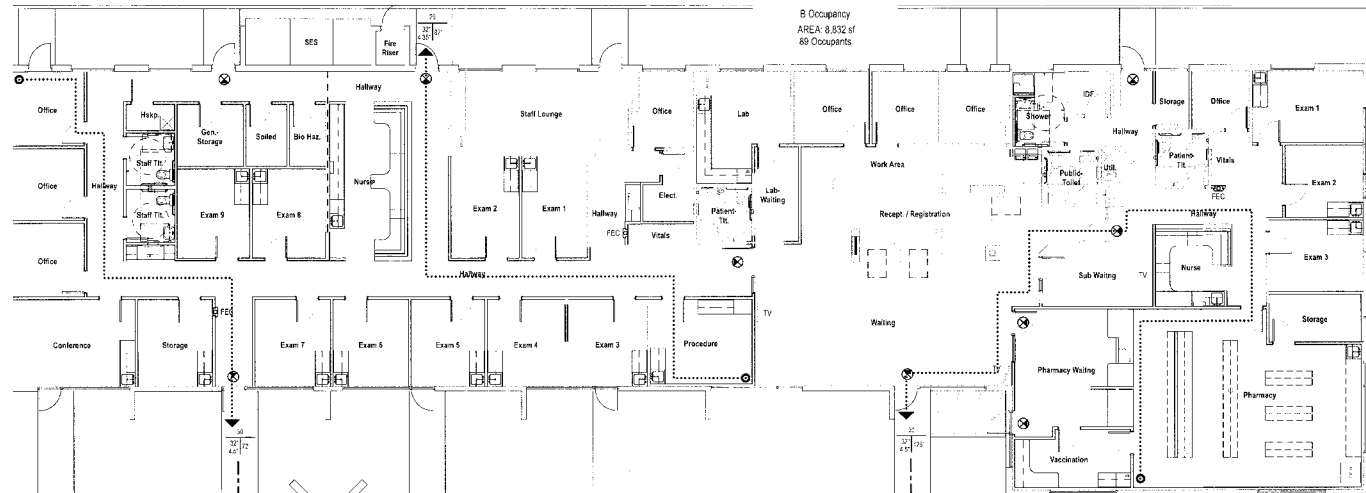
TRACY ALTEMUS
602.206.6474 | taltemus@REsourcecmcl.com



SUITE B-6



SUITE B-10



REsourcecmcl.com

