



±9,881 SF for Lease

3727 METRO DRIVE, STOCKTON, CA



RECENTLY
COMPLETED
RENOVATIONS

TIM MUSTIN

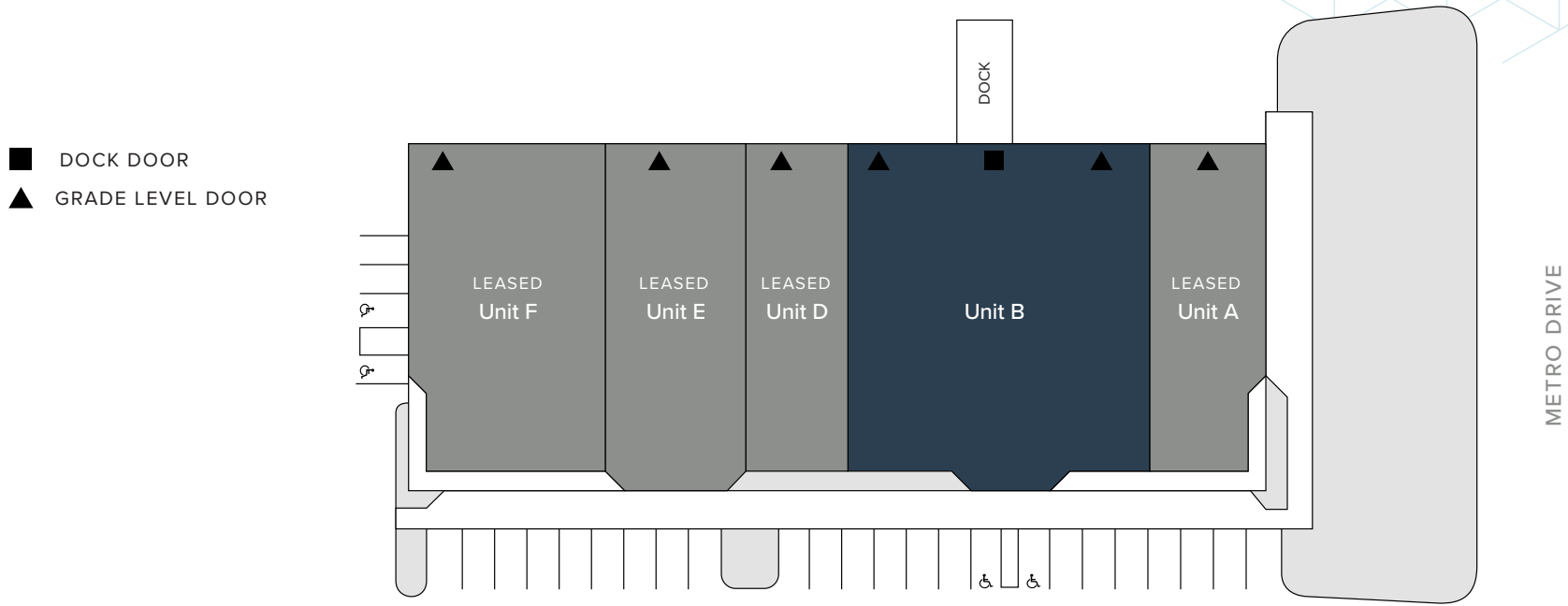
+1 209 390 1687
tim.mustin@jll.com
RE Lic #01857876

MICHAEL MATTER

+1 209 390 1702
michael.matter@jll.com
RE Lic #01435801

DRA **RISING**
ADVISORS

3727 METRO DRIVE, STOCKTON, CA



PROPERTY HIGHLIGHTS

BUILDING SIZE ±26,464 SF

AVAILABLE Unit B | ±9,881 SF

OFFICE ±3,200 SF

DOCK DOORS One (1)

GRADE LEVEL DOORS Two (2)

CLEAR HEIGHT 14'

LIGHTING LED

POWER 110 / 208 volt

FIRE SUPPRESSION 0.33 / 3,000

ZONING I-L, Limited Industrial (City of Stockton)

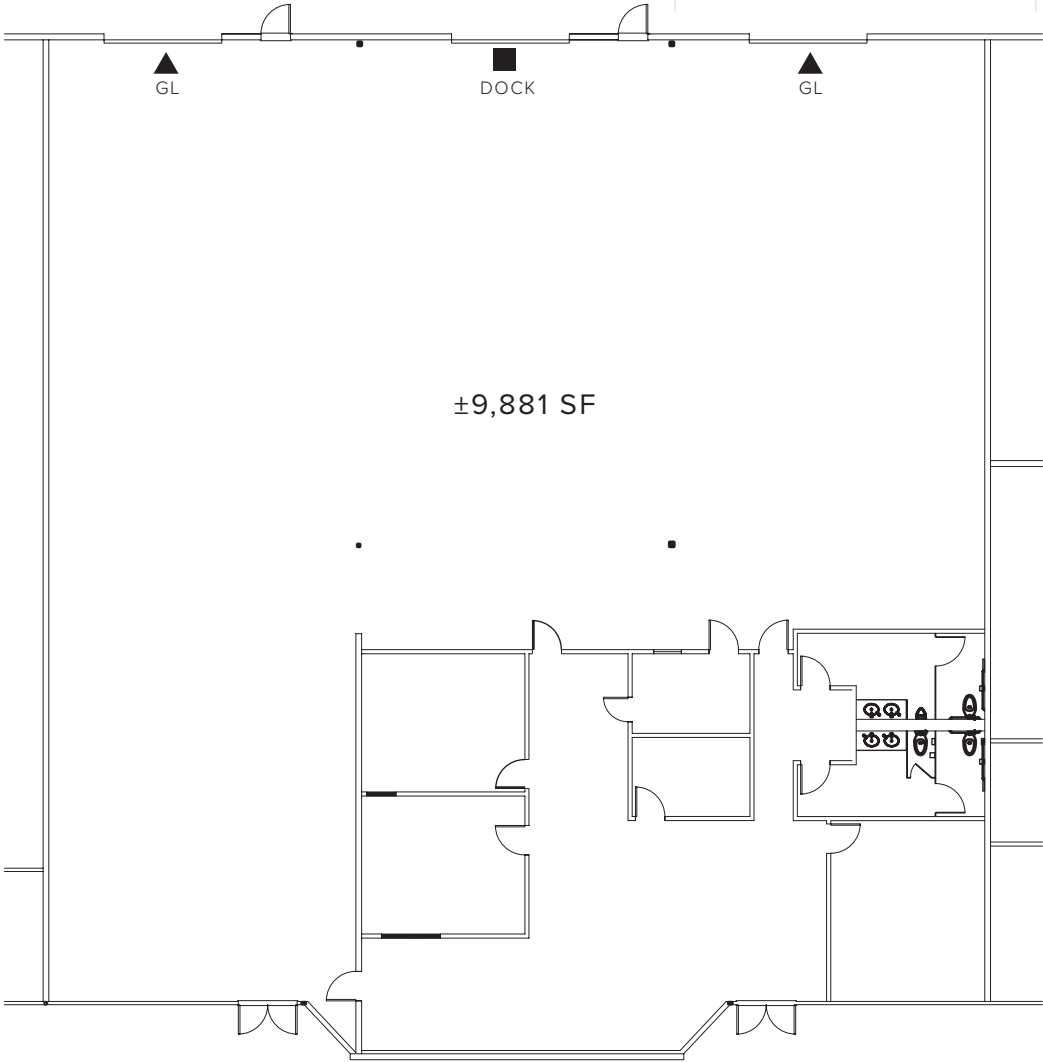
YEAR BUILT 1990

ASKING RATE Contact Broker

3727 METRO DRIVE, STOCKTON, CA

UNIT B

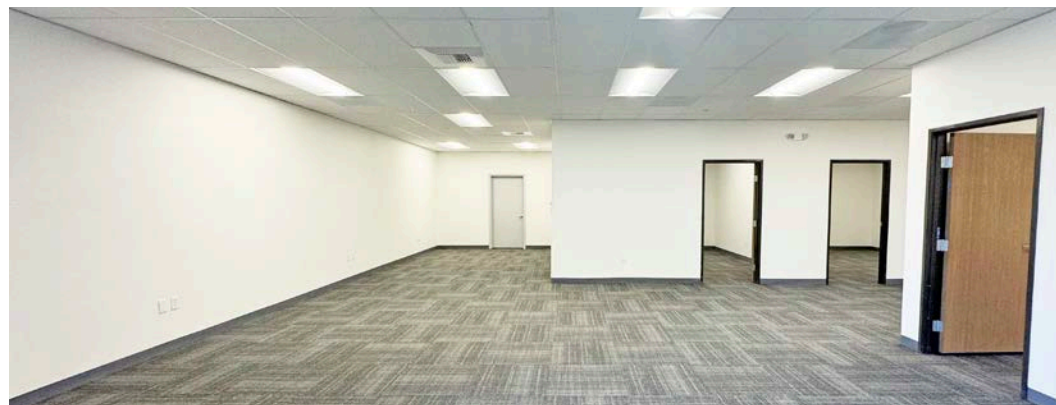
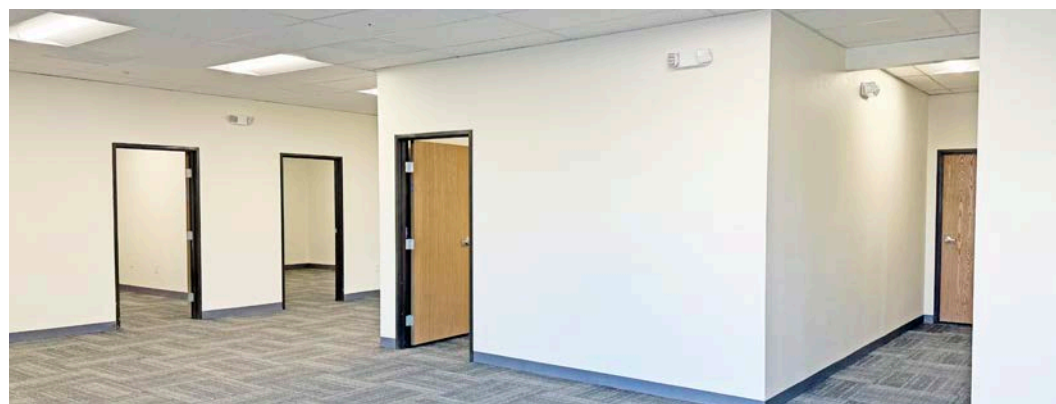
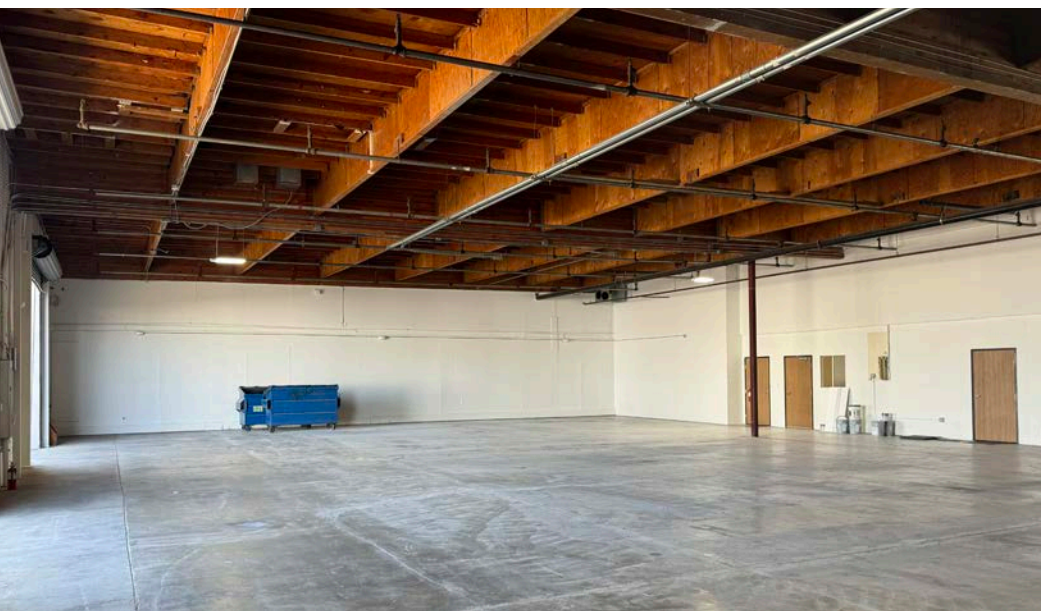
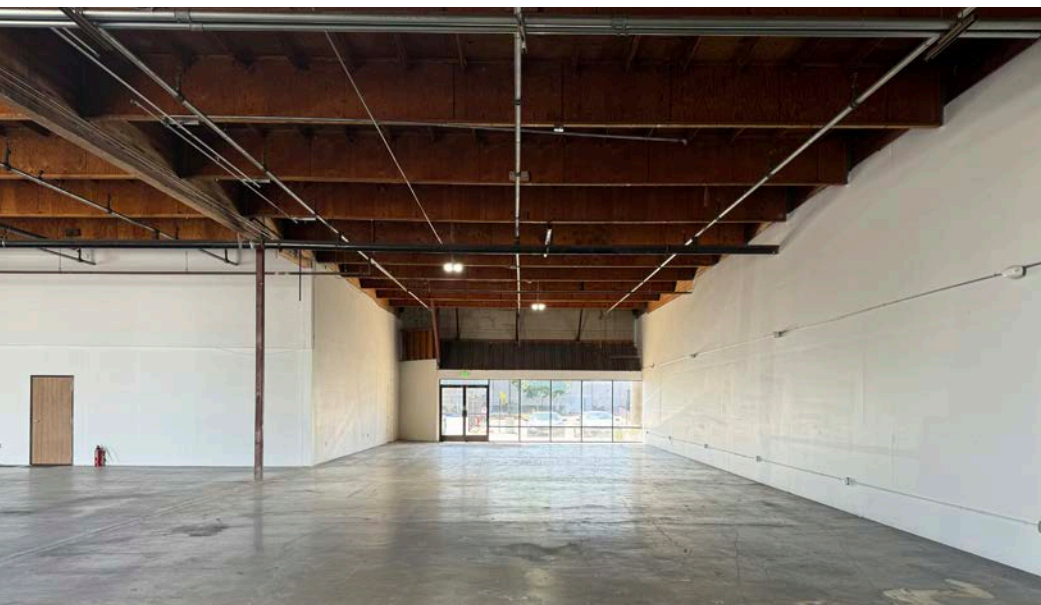
BUILDING SIZE	±26,464 SF
AVAILABLE	±9,881 SF
OFFICE	±3,200 SF
DOCK DOORS	One (1)
GRADE LEVEL DOORS	Two (2)



FLOOR PLAN NOT DRAWN TO SCALE

3727 METRO DRIVE, STOCKTON, CA

PHOTOS





DISTANCE FROM SUBJECT PROPERTY

INTERMODALS & PORTS

BNSF Intermodal (Stockton)	3 miles
Union Pacific Intermodal (Lathrop)	10 miles
Port of Stockton	11 miles
Port of Oakland	75 miles

AIRPORTS

Stockton Metropolitan Airport	3 miles
Sacramento International Airport	65 miles

CITIES

Manteca	8 miles
Lathrop	10 miles
Tracy	20 miles
Modesto	25 miles
Sacramento	56 miles
Merced	64 miles
San Jose	80 miles
San Francisco	83 miles



TIM MUSTIN
 +1 209 390 1687
 tim.mustin@jll.com
 RE Lic #01857876

MICHAEL MATTER
 +1 209 390 1702
 michael.matter@jll.com
 RE Lic #01435801



Although information has been obtained from sources deemed reliable, neither Owner nor JLL makes any guarantees, warranties or representations, express or implied, as to the completeness or accuracy as to the information contained herein. Any projections, opinions, assumptions or estimates used are for example only. There may be differences between projected and actual results, and those differences may be material. The Property may be withdrawn without notice. Neither Owner nor JLL accepts any liability for any loss or damage suffered by any party resulting from reliance on this information. If the recipient of this information has signed a confidentiality agreement regarding this matter, this information is subject to the terms of that agreement. ©2024, Jones Lang LaSalle IP, Inc. All rights reserved.