

FOR LEASE | ±27,120 SF | SECURE YARD

\$0.89 PSF NNN



SCAN & SUBSCRIBE!

LARKIN
INDUSTRIAL GROUP

3824 N 5th St | North Las Vegas, NV 89032

NAIExcel

COMMERCIAL REAL ESTATE SERVICES, WORLDWIDE

6064 South Durango Drive,
Las Vegas, NV 89113
702.383.3383 | naiexcel.com

Eric J. Larkin, MBA, CCIM, SIOR

LIC#BS.0073906
702.279.2479
elarkin@naiexcel.com

Leslie Houston, SIOR

LIC#S.01879121
660.287.2253
lhouston@naiexcel.com

Michael Kenny, SIOR

LIC#S.0178188
702.408.0963
mkenney@naiexcel.com

Seth Wright

LIC#S.0202229
949.531.8369
swright@naiexcel.com

Property Summary

LEASE RATE	\$0.89/SF NNN
*OPEX	\$0.20/SF
BUILDING SQFT	±27,120 Total
OFFICE SQFT	±1,000 SF
AVAILABLE	Available Now

*OPEX includes HVAC repairs and maintenance

- Zoned M-2 with possible secure, outdoor parking exclusive to Unit D.
 - Additional ±2,000 SF HVAC open office/storage (Removable)
 - Small WH office in rear (Removable)
 - 3 Docks
 - 1 Drive-in
 - 24' - 26' Clear
 - 400 Amps 3-Phase*
 - Easy access to I-15 from Cheyenne and Craig
- *To be verified.

HYDRAULIC SYSTEM

Discharge Rate **.64** GPM/SQFT
(L/min) per sqft (m2) of floor area over a maximum area of **2,000 SQFT (m2)** when supplied with water at the rate of **1,851.38 GPM (L/min)** at **62 psi (bars)** at the base of the riser.

House Strain Allowance **500** GPM(L/min)

Occupancy Classification **High Pile Storage**

Commodity Classification **Class IV**

Maximum Storage Height **22 FT**



OR TEXT 23117 TO 39200

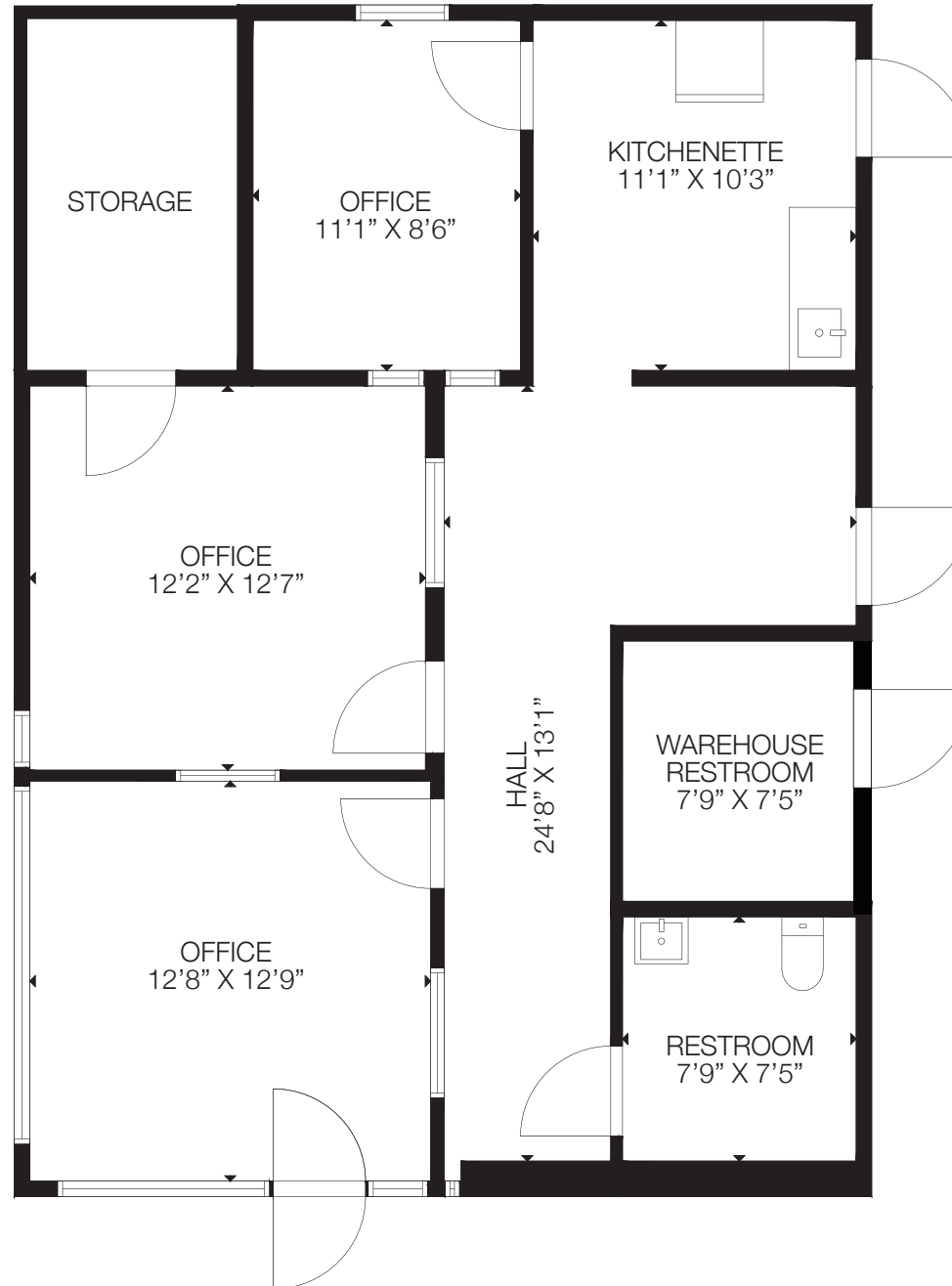
Message frequency will vary. Message and data rates may apply. Reply HELP for help or STOP to cancel.

[ARTI Terms of Service](#) | [ARTI Privacy Statement](#)

Office Floorplan

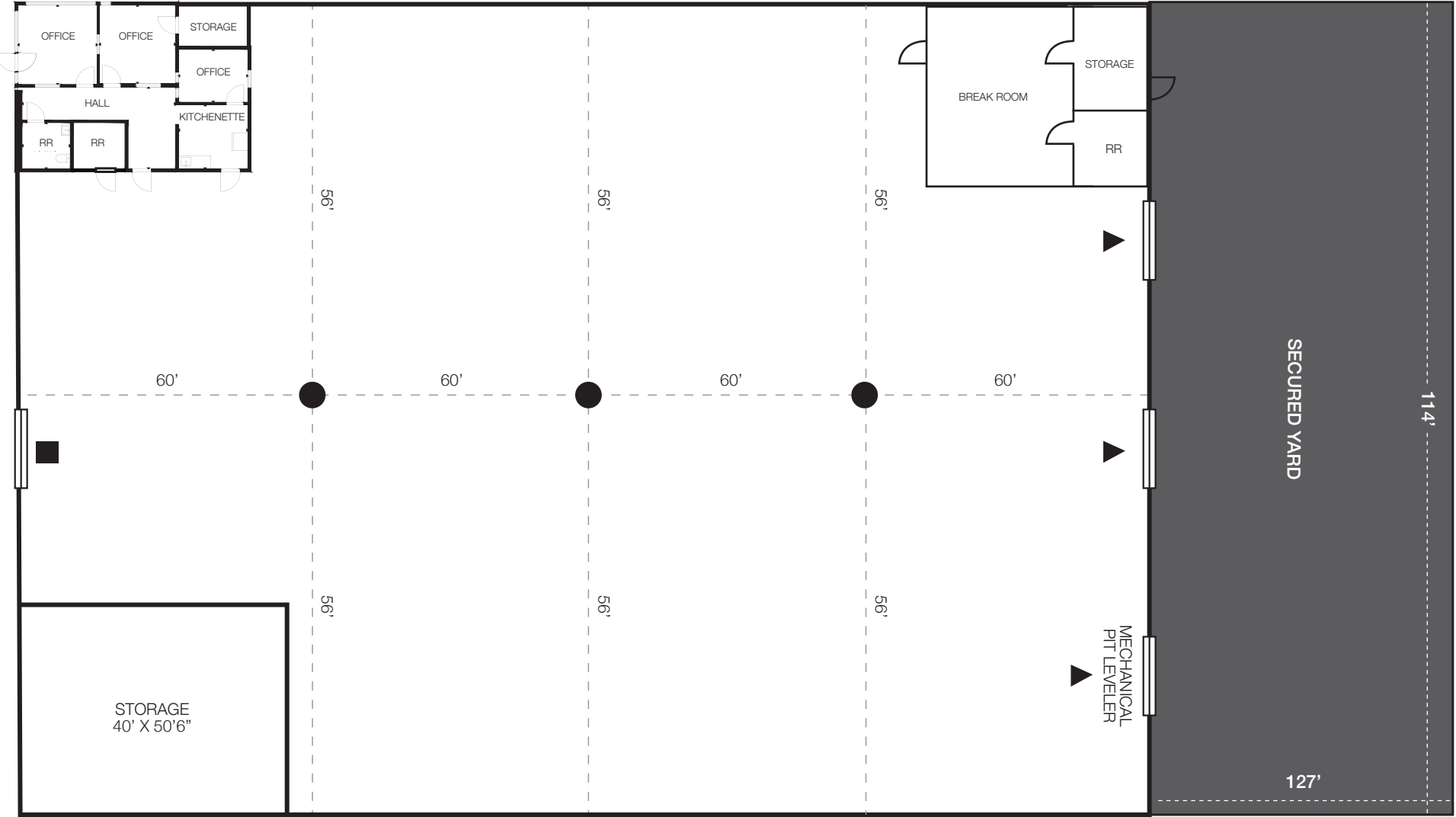


[CLICK HERE](#)
FOR 3D TOUR



*Floorplan not drawn to scale.

Site Plan



*NOTE: This site plan is not drawn to scale

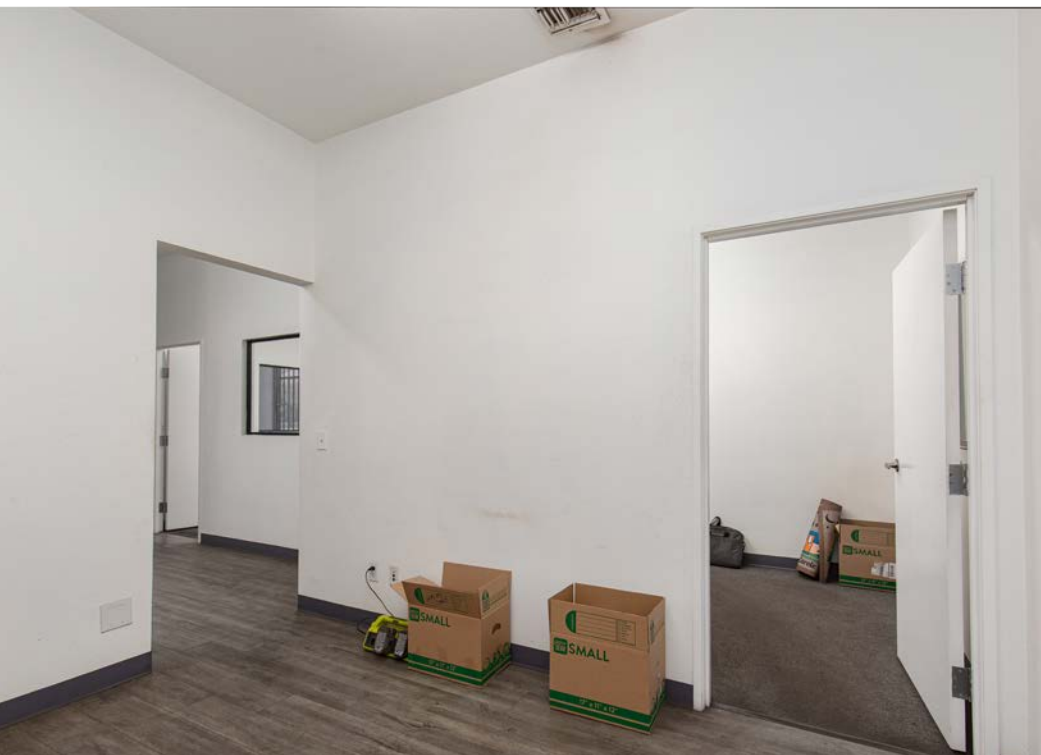
- ▶ Dock Level Loading
- Grade Level Loading

Area Map

- Shops/Tenants
- Schools
- Public Parks
- Govt. Buildings
- Airport













Distance to Major Cities

Salt Lake City, Utah	420 miles
Reno, Nevada	438 miles
Los Angeles, California	270 miles
San Diego, California	332 miles
Denver, Colorado	748 miles
Phoenix, Arizona	305 miles

Market Research

Our offices publish commercial and residential market research across Utah and Nevada. NAI Excel is known for their deep and rich data. Lending institutions, appraisers, and business consultants look to our market reports as the authority on commercial real estate market trends. We have built and maintained a comprehensive database comprised of data collected from some of the largest appraisal firms in the region, NAI transaction, and other data. NAI publishes statistics for the office, retail, industrial, and multifamily markets. Additionally, single family housing reports are published for every major market from Las Vegas to Salt Lake City, through our affiliate.

[ARTI Terms of Service](#) | [ARTI Privacy Statement](#)

<https://brokerstechnology.com/terms-of-use/>

<https://brokerstechnology.com/privacy-policy/>

CLICK HERE



VIEW MARKET STATISTICS
FOR OFFICE, RETAIL,
INDUSTRIAL & MULTIFAMILY

<https://excelcres.com/market-research>



COMMERCIAL REAL ESTATE SERVICES, WORLDWIDE

6064 South Durango Drive,
Las Vegas, NV 89113
702.383.3383 | naiexcel.com

Eric J. Larkin, MBA, CCIM, SIOR

LIC#BS.0073906
702.279.2479
elarkin@naiexcel.com

Leslie Houston, SIOR

LIC#S.01879121
660.287.2253
lhouston@naiexcel.com

Michael Kenny, SIOR

LIC#S.0178188
702.408.0963
mkenny@naiexcel.com

Seth Wright

LIC#S.0202229
949.531.8369
swright@naiexcel.com