

THE LANDINGS

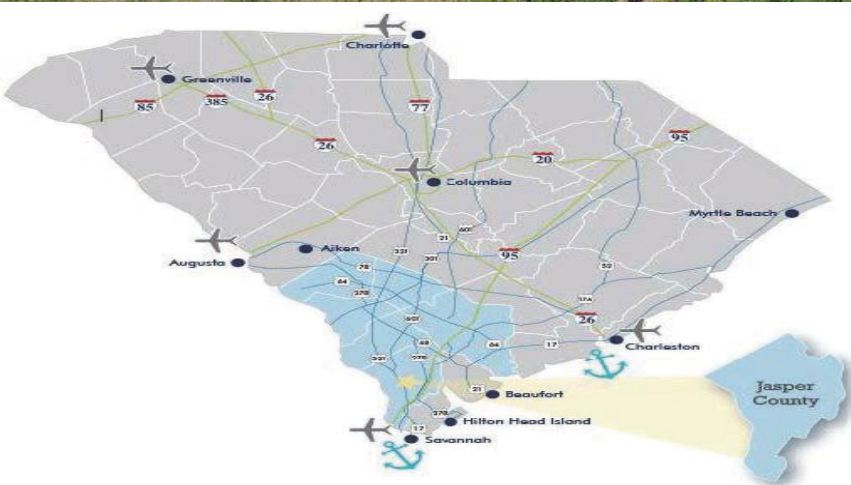
Hilton Head, SC



SUTTON 
PROPERTIES INC

THE LANDINGS

Hilton Head, SC



SUMMARY & HIGHLIGHTS

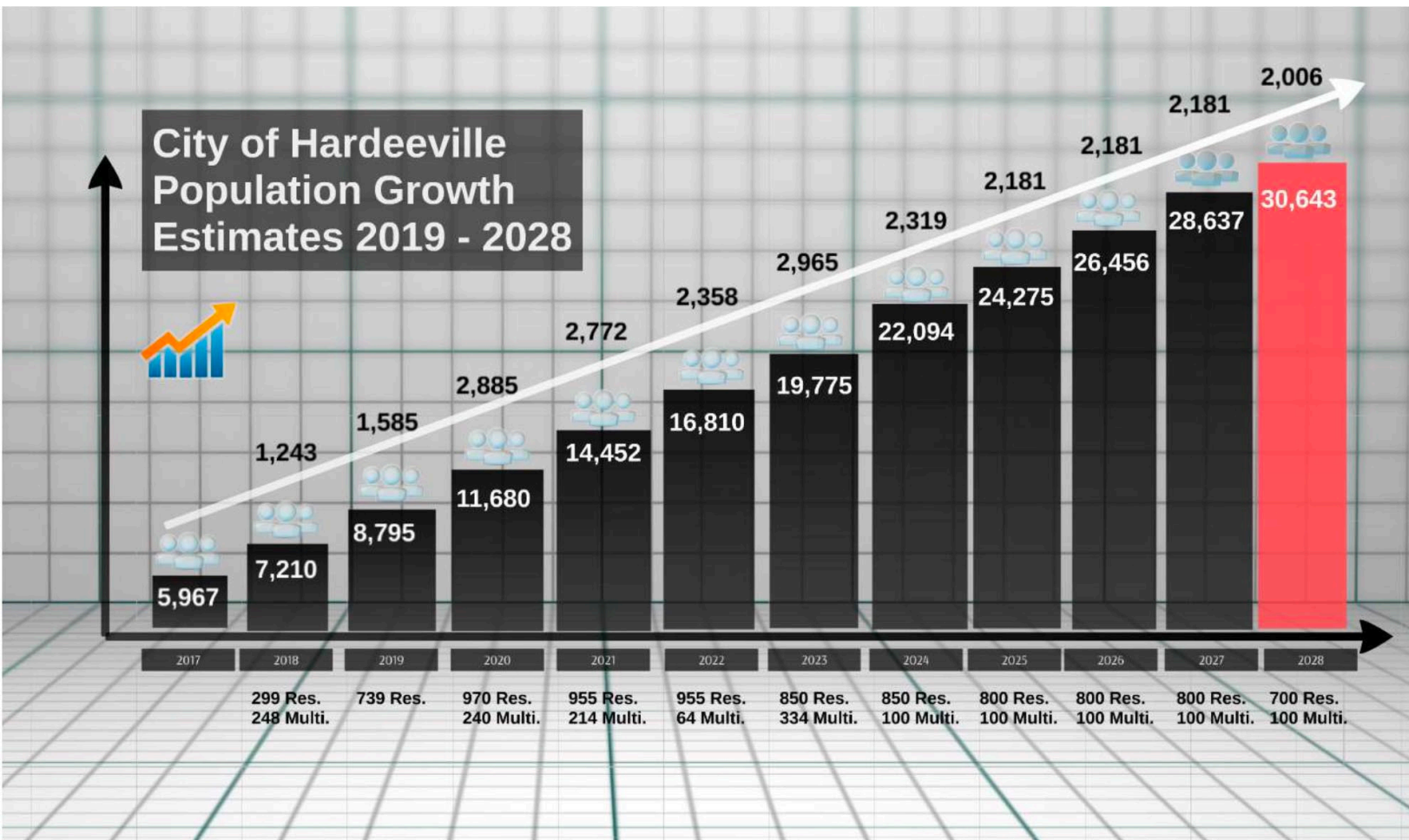
- Mixed-use development site sits on 72-acre lot
- Located in Hardeeville, SC on Highway 278 about 2 miles from Interstate 95 & US-278 West intersection
- Adjacent to Latitude Margaritaville Hilton Head, a 300K SF residential development with over 3,800 homes
- Approximately 1/3 mile of high-visibility linear frontage on US-278 West
- Greater Hilton Head is one of the fastest growing markets in the U.S.
- Hardeeville, SC has seen 91% population growth, while Jasper County has seen 47% population growth since the latest US Census data
- Approximately 20-minute drive from Savannah/Hilton Head International Airport

DEMOGRAPHICS

	3 mi	5 mi	10 mi
Total Population	8,955	34,064	83,866
Household Growth Rate	2.70%	3.10%	2.50%
Avg. HH Income	\$93,082	\$106,601	\$121,982
Median Age	69.2	63.7	49.7

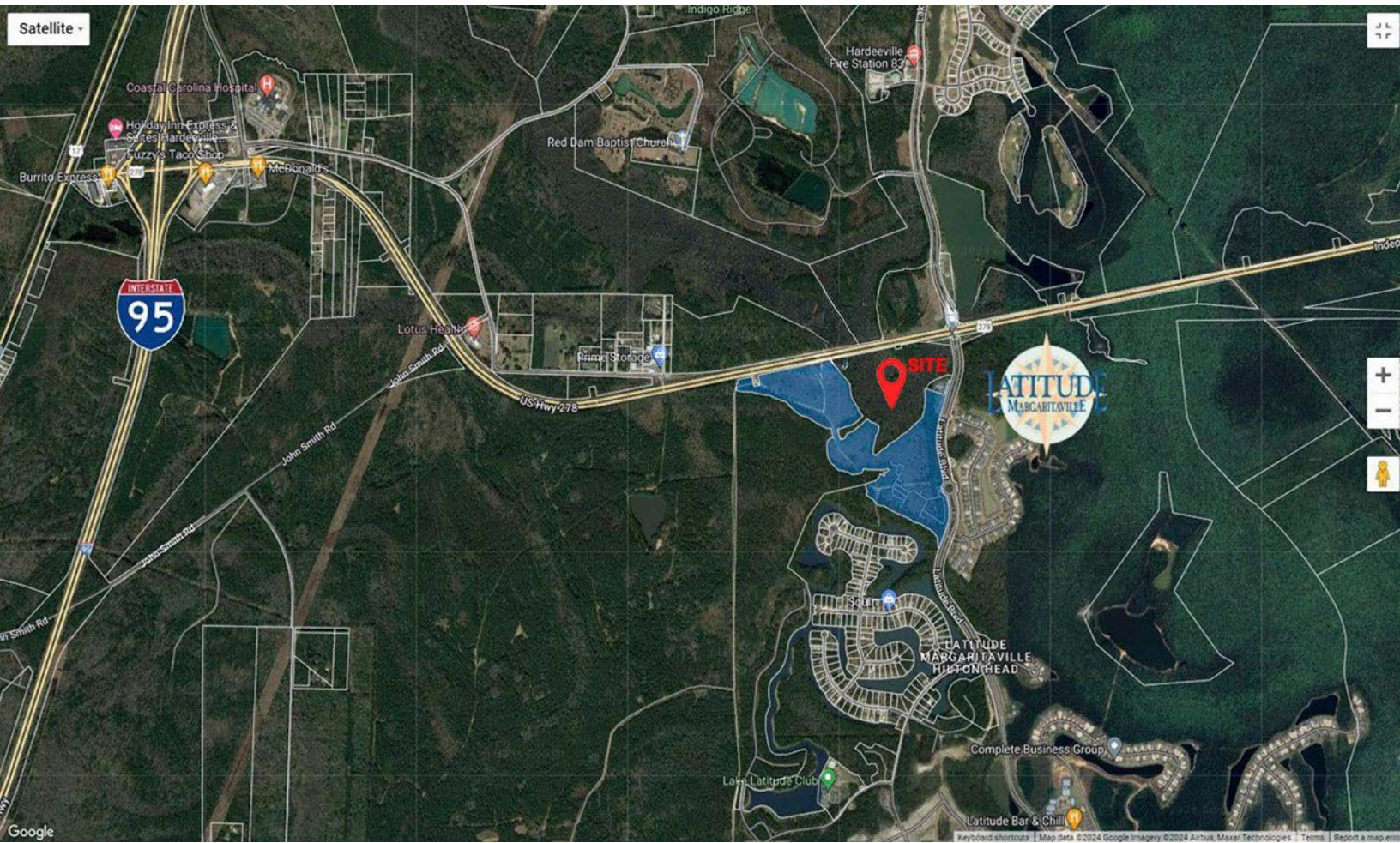
THE LANDINGS

Hilton Head, SC



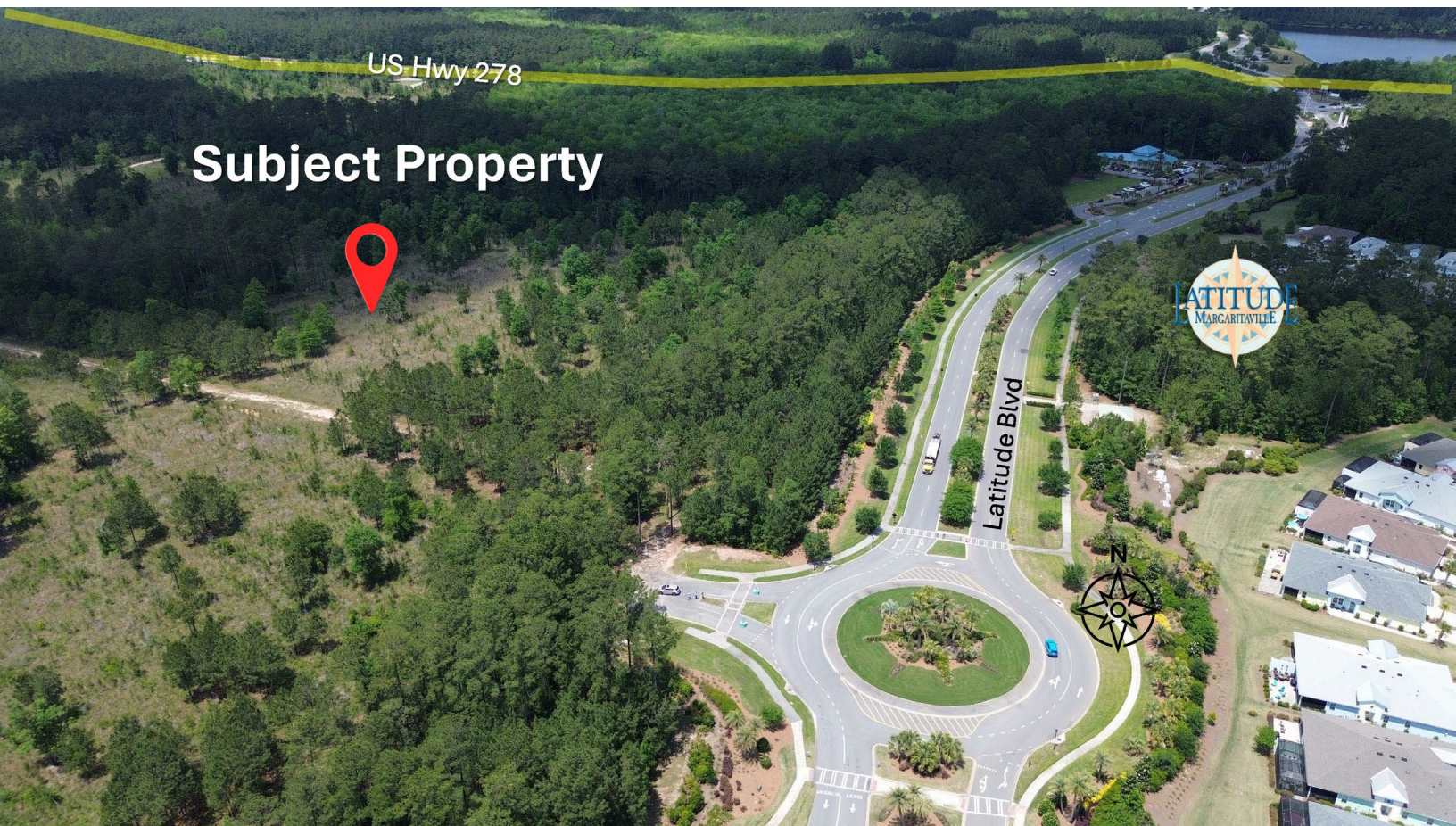
THE LANDINGS

Hilton Head, SC



THE LANDINGS

Hilton Head, SC



THE LANDINGS

Hilton Head, SC



Zachary G. Hammer
Vice President, Leasing & Development
zhammer@suttoprop.com
(617) 974-7461

SUTTON 
PROPERTIES INC