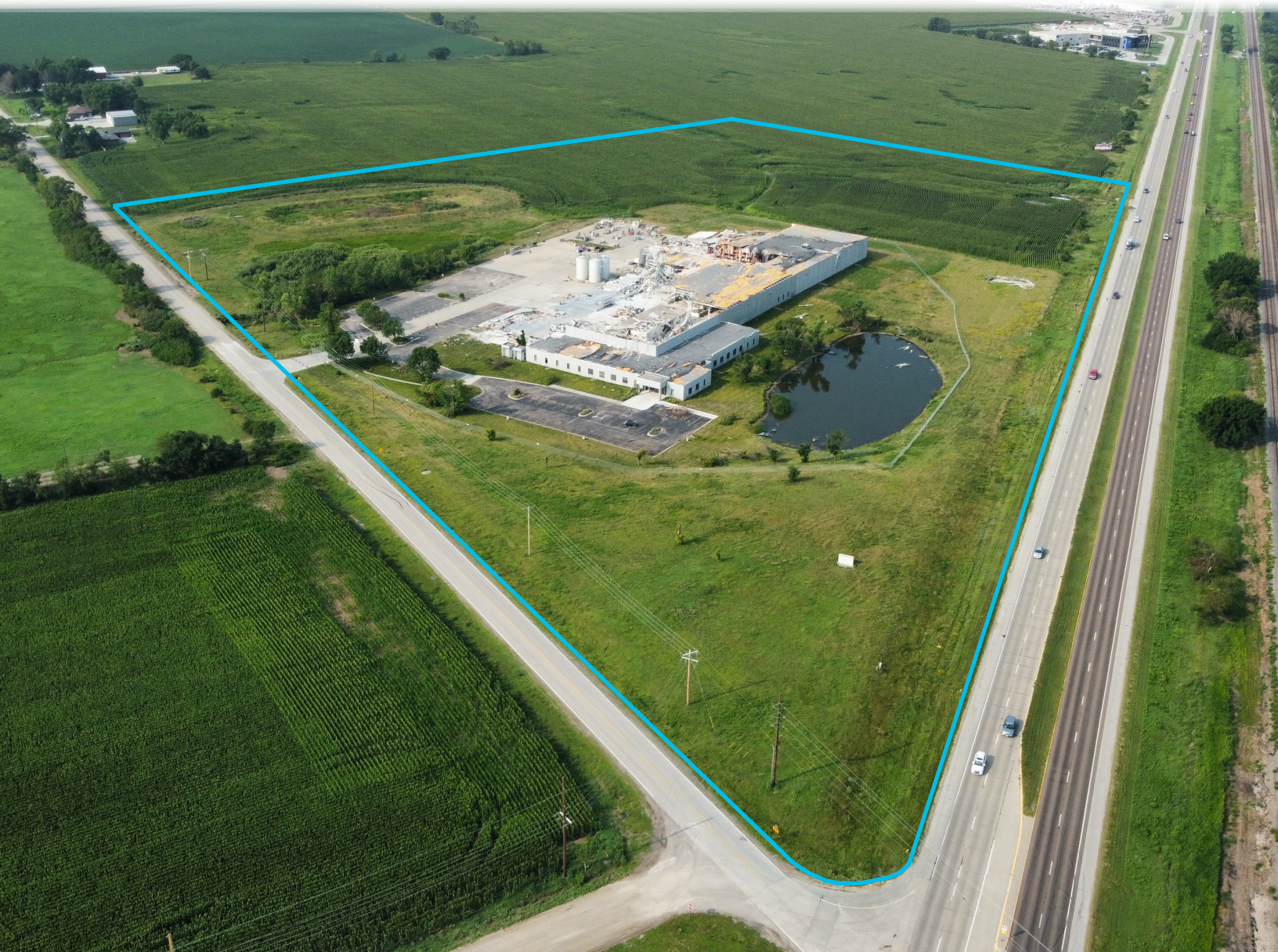


FOR SALE

Mixed Use | Industrial Land

7201 N 98th St, Lincoln, NE 68507

\$4,900,000 | 29.68 acres



Note: All dimensions are approximations and are not guaranteed. Please field verify all measurements.

LISTING AGENTS:



Chris Vasek, SIOR

402 202 7648

cvasek@linepartners.com



Pat Heiser

402 875 3600

pheiser@linepartners.com

LINE
PARTNERS

1001 S. 70th St.
Lincoln, NE 68510
402 477 9300
linepartners.com

7201 N 98TH ST.

About The Property

This 29.69-acre parcel provides exceptional visibility with access along Cornhusker Hwy and is strategically located between Lincoln and Waverly. Its prime location offers an excellent opportunity for use such as manufacturing, an industrial supply company, a warehouse and storage complex, a fleet dispatching or serving facility, a regional hub or terminal, or a data center. The location offers simple access from Interstate 80 for truckers and Eastern Nebraska commuters. Despite the recent tornado damage, the property holds immense potential in an area of town experiencing significant growth. The property is being sold "As-Is".

Property Location

Located on Cornhusker Hwy with close proximity to Northeast Lincoln, Waverly, and the I-80/Waverly interchange.

Property Details

- Price: \$4,900,000
- Land Area: 29.68 acres
- Zoning: I-1
- Type: Mixed/Industrial
- Use Type: Vacant/Owner-User/Development
- Vehicles Per Day: 23,130



7201 N 98TH ST.

Photos



Note: All dimensions are approximations and are not guaranteed. Please field verify all measurements.

7201 N 98TH ST.
Aerial



Note: All dimensions are approximations and are not guaranteed. Please field verify all measurements.