

234 FAYETTEVILLE STREET

SUITE 300

FOR LEASE

OFFICE SPACE

DOWNTOWN RALEIGH



4,933 RSF

- Six private offices and an open work space allows for a flexible configuration ideal for various needs
- Plentiful natural light and great views overlooking downtown Raleigh
- Fully rehabilitated office space with a kitchenette and private restrooms
- Downtown location, steps away from all of Raleigh's urban amenities

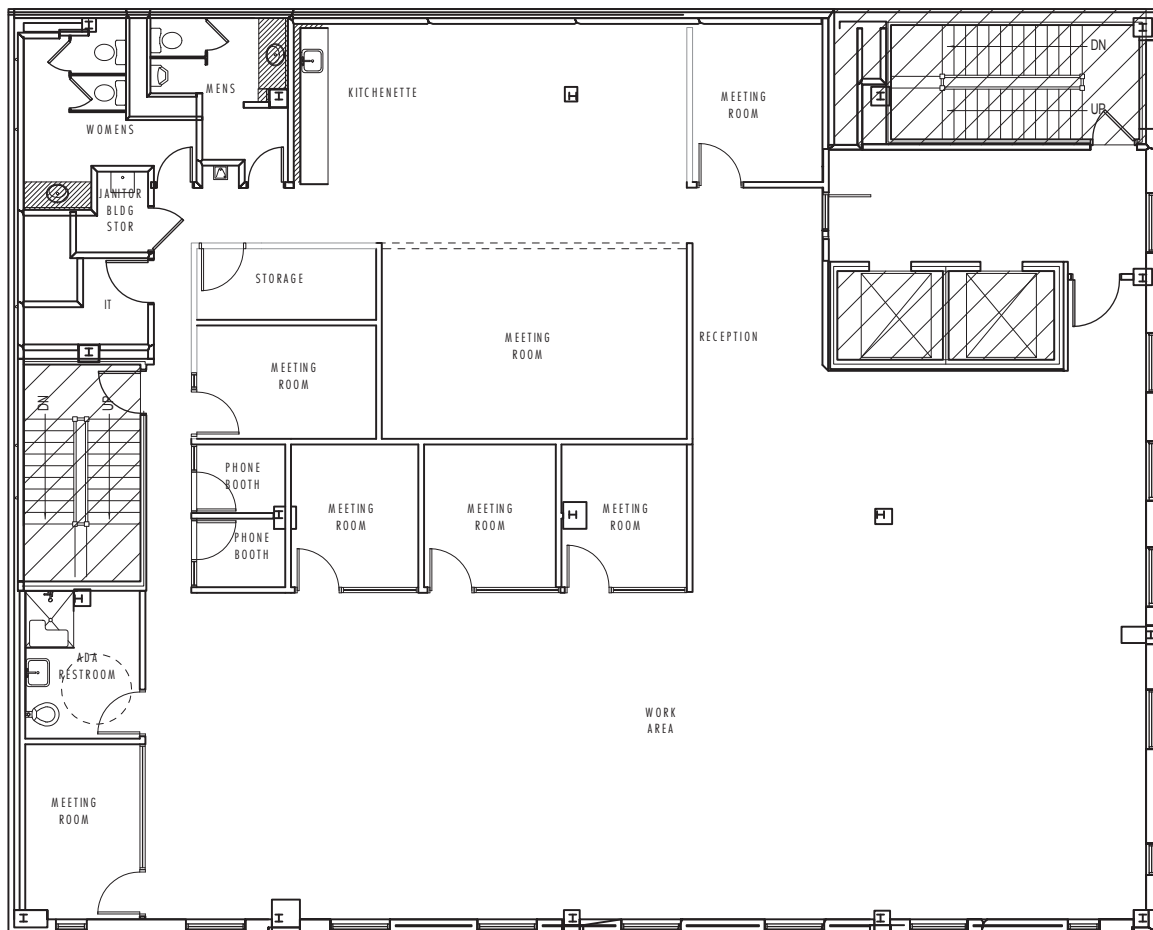
FOR LEASING AND AVAILABILITY

commercial@empire1792.com | 919-834-8350
Empire Brokerage Services, Inc.



OFFICE SPACE

DOWNTOWN RALEIGH



FOR LEASING AND AVAILABILITY

commercial@empire1792.com | 919-834-8350
Empire Brokerage Services, Inc.



234 FAYETTEVILLE STREET
SUITE 300

FOR LEASE

OFFICE SPACE

DOWNTOWN RALEIGH



FOR LEASING AND AVAILABILITY

commercial@empire1792.com | 919-834-8350
Empire Brokerage Services, Inc.



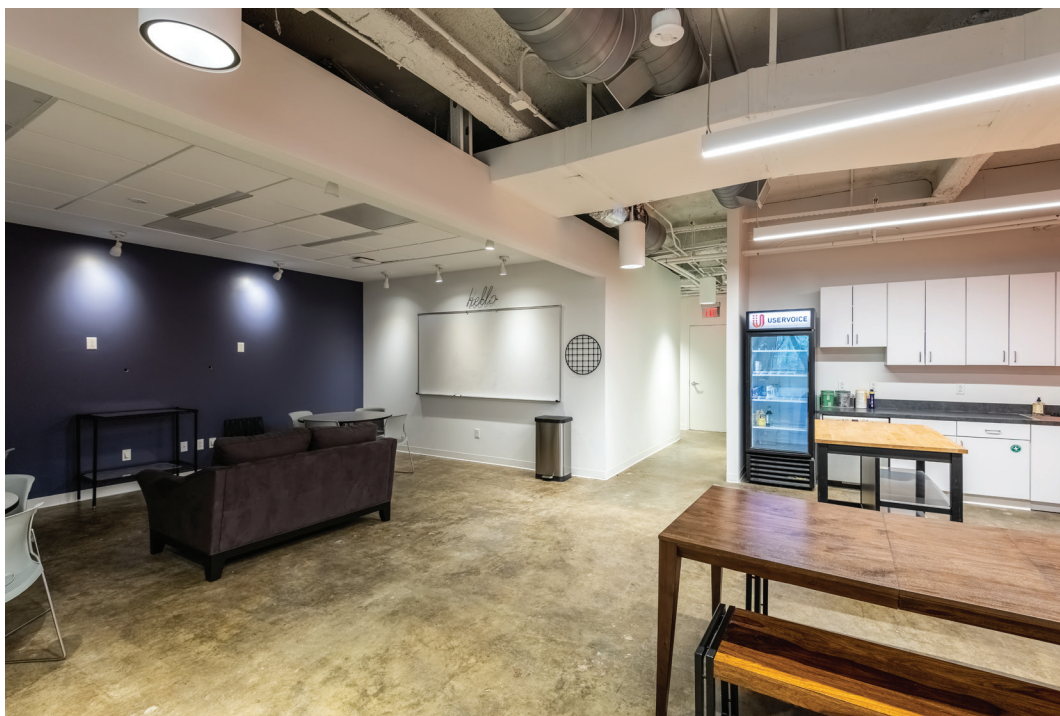
**EMPIRE
PROPERTIES**

234 FAYETTEVILLE STREET
SUITE 300

FOR LEASE

OFFICE SPACE

DOWNTOWN RALEIGH



FOR LEASING AND AVAILABILITY

commercial@empire1792.com | 919-834-8350
Empire Brokerage Services, Inc.



234 FAYETTEVILLE STREET
SUITE 300

FOR LEASE

OFFICE SPACE

DOWNTOWN RALEIGH



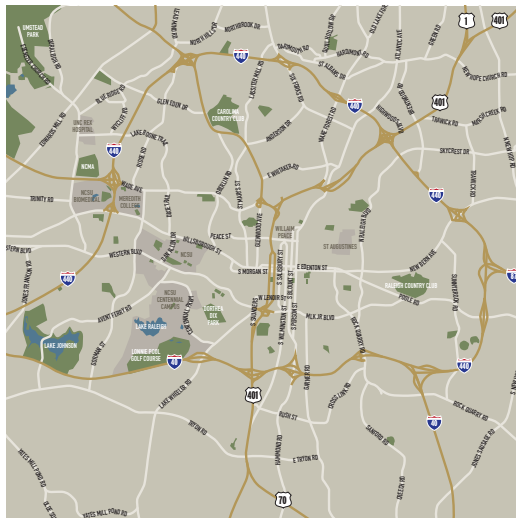
FOR LEASING AND AVAILABILITY

commercial@empire1792.com | 919-834-8350
Empire Brokerage Services, Inc.



OFFICE SPACE

DOWNTOWN RALEIGH



LOCATION

- In the heart of Raleigh's Fayetteville District, in close proximity to Nash Square, Moore Square, Capital Square, and City Center
- Deck and surface parking available within blocks
- Steps away from restaurant, retail, and entertainment amenities

FOR LEASING AND AVAILABILITY

commercial@empire1792.com | 919-834-8350
Empire Brokerage Services, Inc.

