

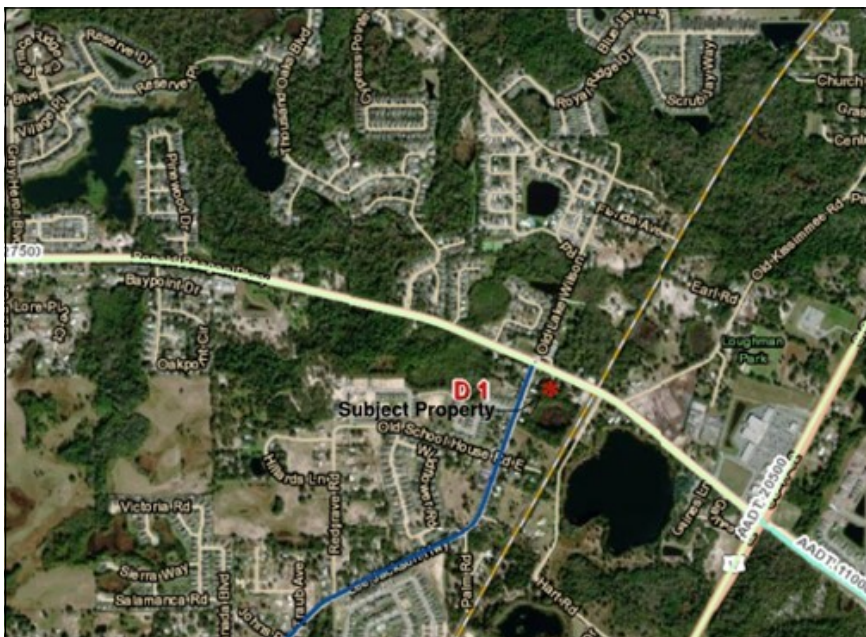
# Ronald Reagan Pkwy. Assemblage

6 parcels on Ronald Reagan/CR 547 Corner  
Loughman, FL 33858

**1.9+/- Acre Commercial  
Development Opportunity**



No warranty or representation, expressed or implied, is made as to the accuracy of this information, and same is submitted subject to error and omissions.



## Highlights

- Commercial/Mixed-Use
- 350' frontage on Ronald Reagan
- Signalized Intersection
- 27,500 AADT

## Entitlements

- FLU: Convenience Center (CCX)  
Office Center (OCX)  
Residential Low (RL-4X)
- Current Use: Residential

## Property Information

- Parcel ID: 272612-000000-032020, 032010, 032280, 014010, 014160, 014090

**Asking Price: \$1,775,000**

Contact: Sean L. Fullerton, Lic. Real Estate Broker  
Richard L. Fullerton, Inc.  
610 N. Hart Blvd., Orlando, FL 32818

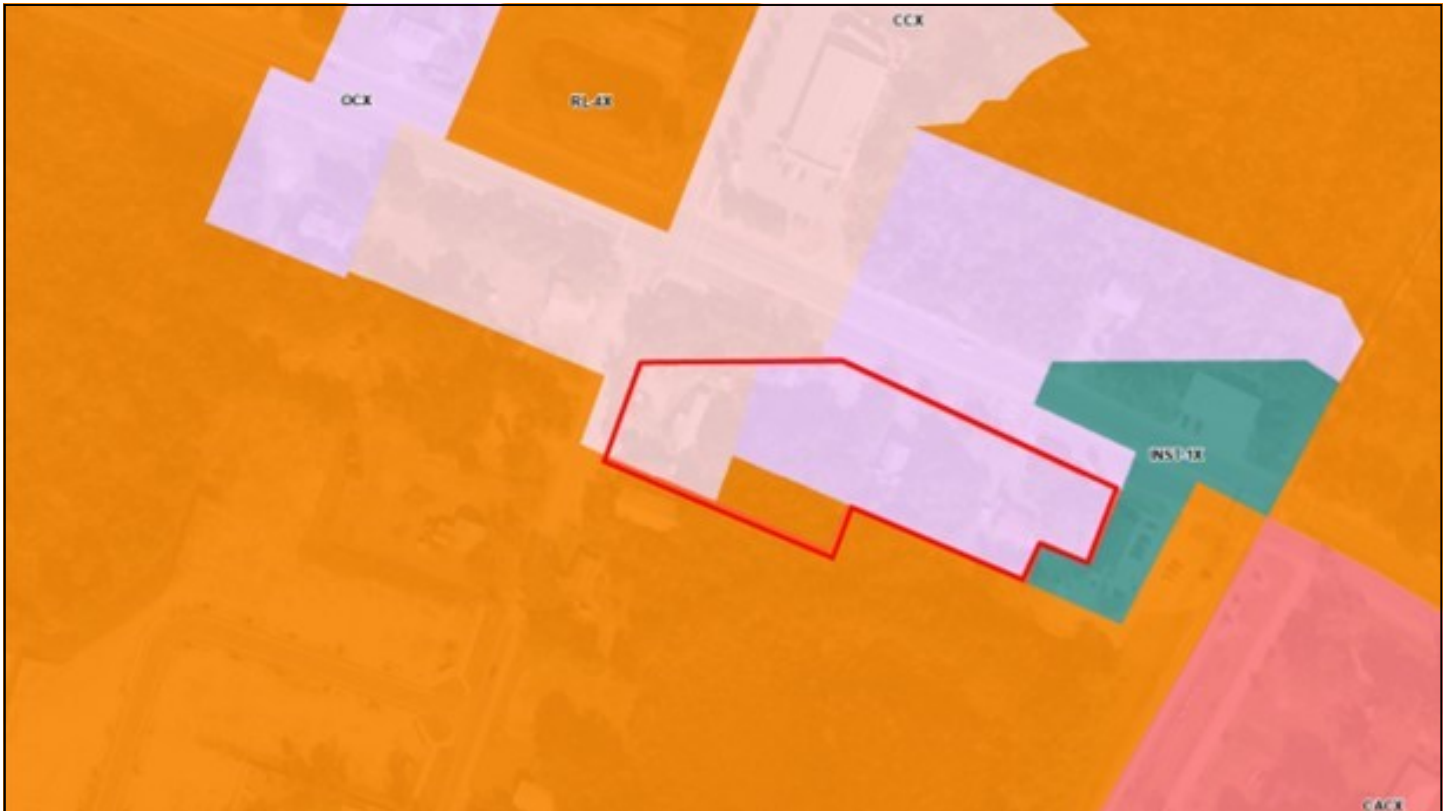
fullerton@cfl.rr.com  
(407) 616-8706 cell  
(407) 293-0589 office

# Ronald Reagan Pkwy. Assemblage

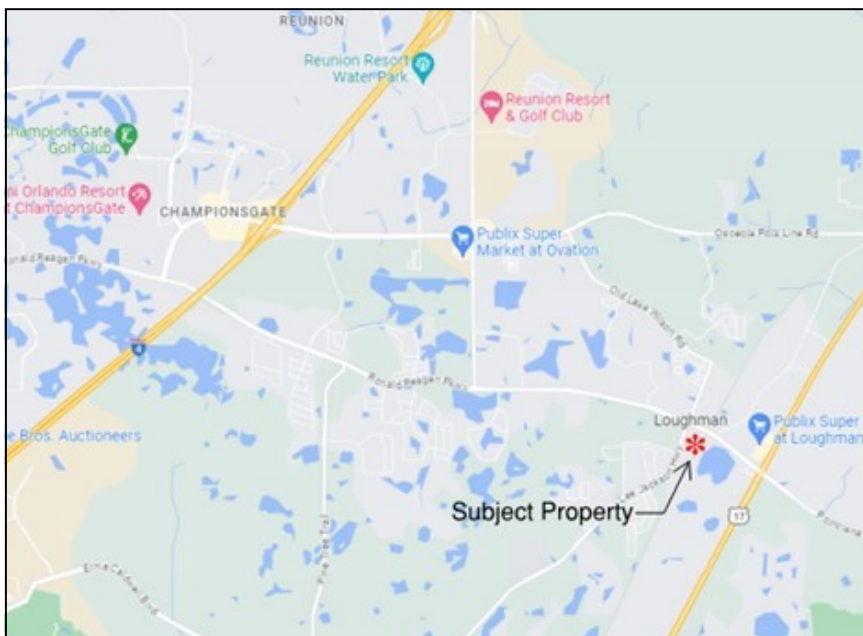
6 parcels on Ronald Reagan/CR 547 Corner  
Loughman, FL 33858



## Future Land Use and Area Map



No warranty or representation, expressed or implied, is made as to the accuracy of this information, and same is submitted subject to error and omissions.



### Area Features

- Providence Golf Community, a 2,200 acre resort community
- Reunion Resort, a 2,100 acre resort community
- Loughman Crossing Retail Center (Publix, 7-11, Burger King, Dunkin Donuts)
- Hillpointe Davenport (288-unit apartments under construction)

Contact: Sean L. Fullerton, Lic. Real Estate Broker  
Richard L. Fullerton, Inc.  
610 N. Hart Blvd., Orlando, FL 32818

sfullerton@cfl.rr.com  
(407) 616-8706 cell  
(407) 293-0589 office

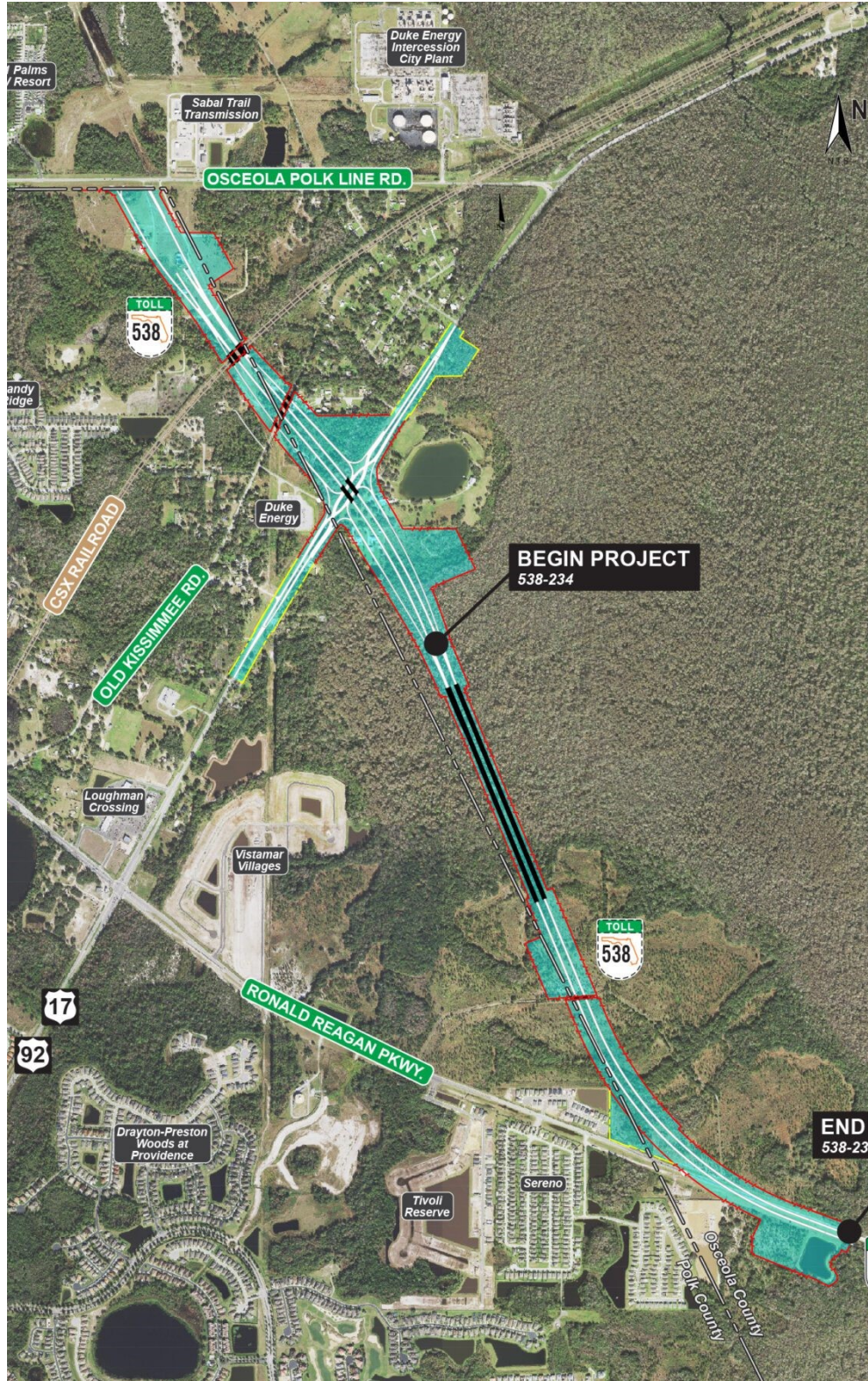


# Ronald Reagan Pkwy. Assemblage

6 parcels on Ronald Reagan/CR 547 Corner  
Loughman, FL 33858

## Poinciana Parkway Extension (beginning 2024)

Extending Poinciana Parkway (SR 538) to Osceola Polk Line Road (CR 532)



Contact: Sean L. Fullerton, Lic. Real Estate Broker  
Richard L. Fullerton, Inc.  
610 N. Hart Blvd., Orlando, FL 32818

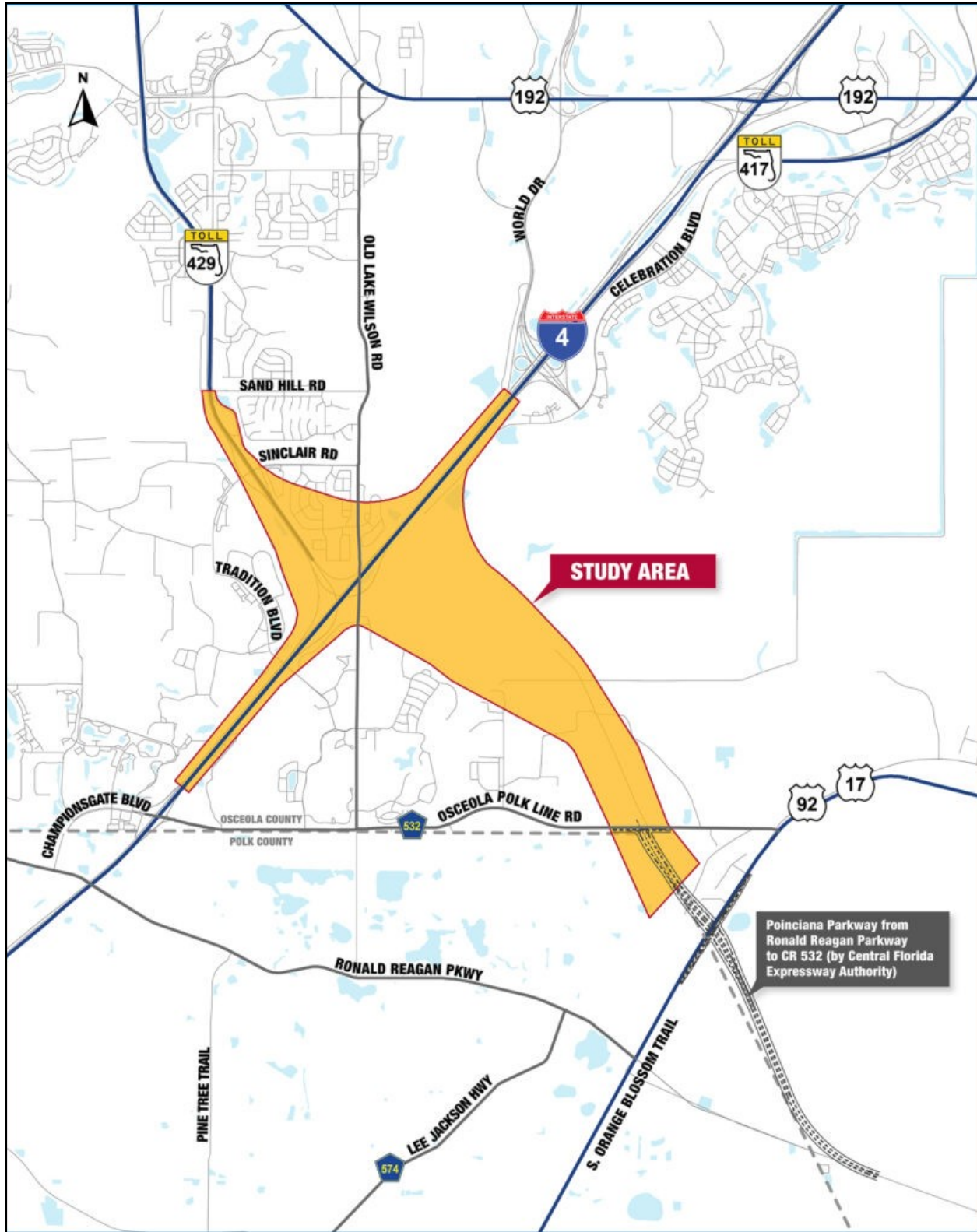
sfullerton@cfl.rr.com  
(407) 616-8706 cell  
(407) 293-0589 office



# Ronald Reagan Pkwy. Assemblage

6 parcels on Ronald Reagan/CR 547 Corner  
Loughman, FL 33858

## I-4 / Poinciana Parkway Connection Study Area between CR 532 and I-4



Contact: Sean L. Fullerton, Lic. Real Estate Broker  
Richard L. Fullerton, Inc.  
610 N. Hart Blvd., Orlando, FL 32818

sfullerton@cfl.rr.com  
(407) 616-8706 cell  
(407) 293-0589 office