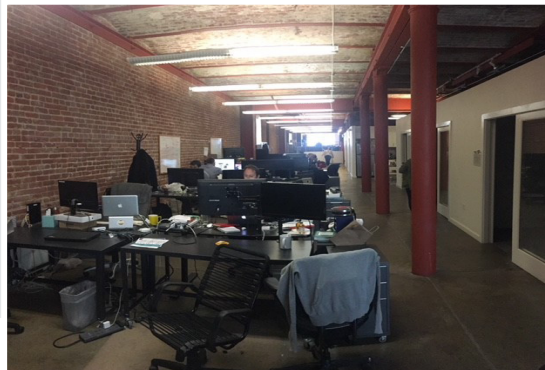
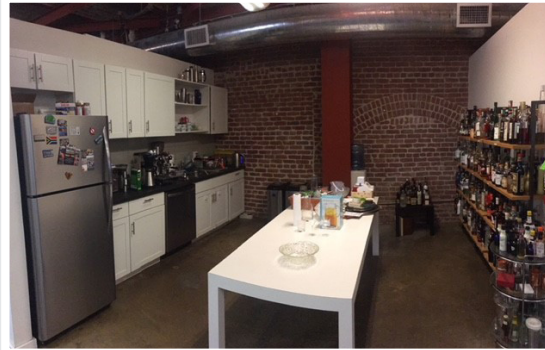


# FOR LEASE

## ± 5,000 sqft Ground Floor Creative Space Centrally Located in SOMA



### ADDRESS

1263 Howard Street  
San Francisco, CA 94103

### SIZE

5,000 ± sqft

### FEATURES

- » Reinforced Brick & Timber Building
- » Kitchen
- » HVAC
- » Open Floor Plan
- » Great Natural Light
- » Roll Up Door Access to Tehama Street
- » Street to Street access Tehama/Howard St.

### LOCATION

- » Great SOMA Location
- » Close to Public Transit

### ZONING

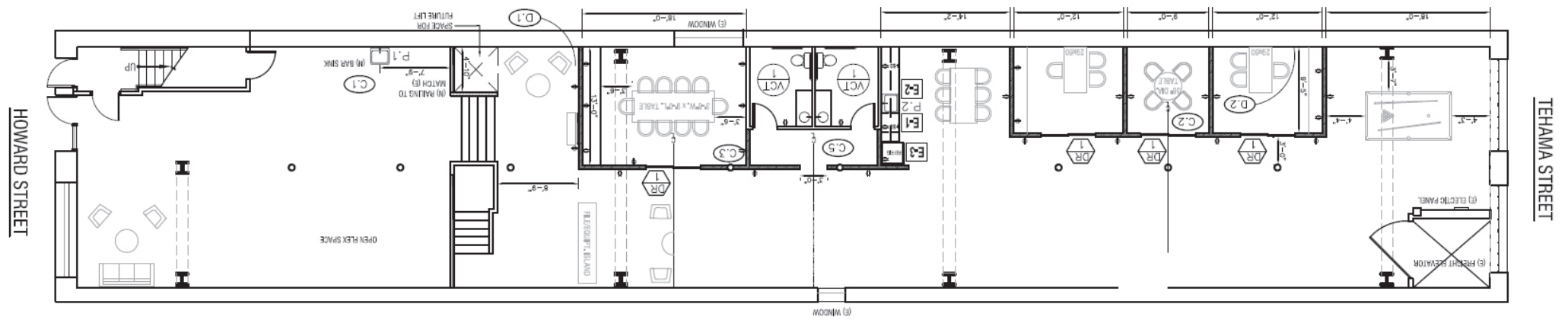
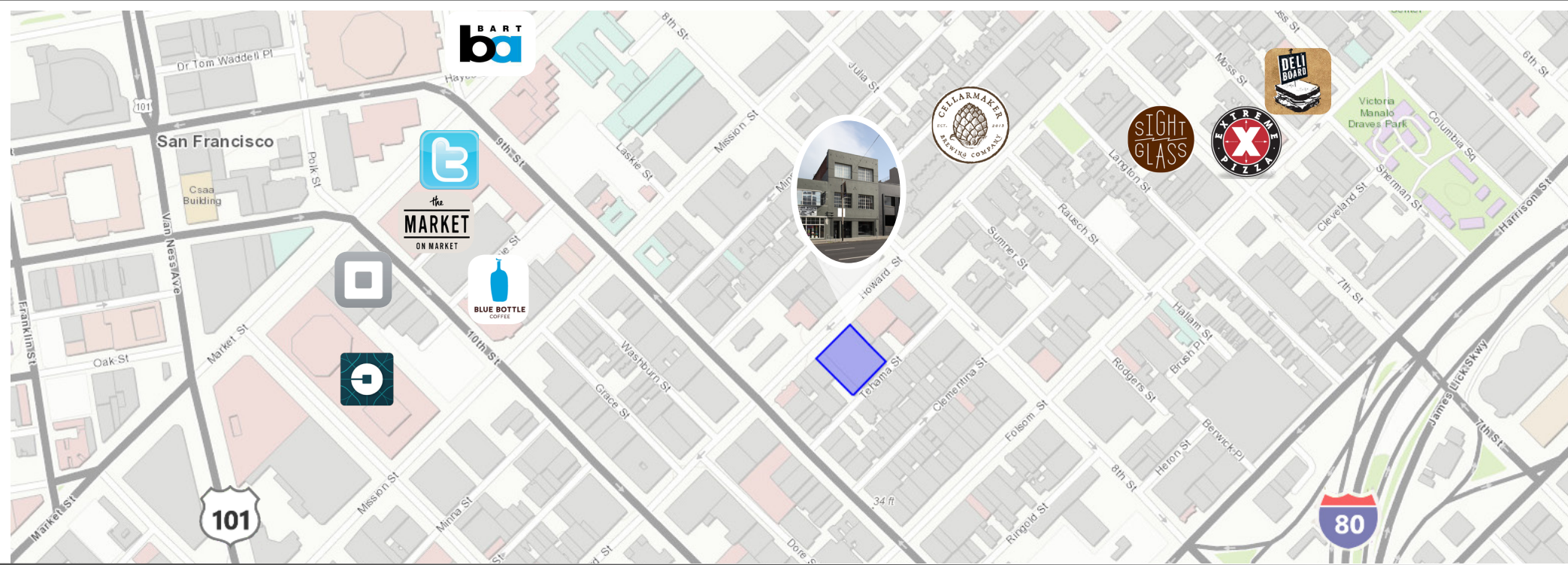
WMUG (West SOMA Mixed Use General)

### LEASE RATE

\$12,500/month, IG (\$30 psf/annum)

# FOR LEASE

## ± 5,000 sqft Ground Floor Creative Space Centrally Located in SOMA



**HCM**  
Commercial Properties

JAY CAHAN  
+1 415 865 6102  
jcahan@hcmcommercial.com  
CA License No. 01005130

BEN DURHAM  
+1 415 865 6106  
bdurham@hcmcommercial.com  
CA License No. 01211050