



FLINT HILL CENTRE

3050 Chain Bridge Road, Oakton, VA

Alan Asman
703.749.9464
alan.asman@
transwestern.com

Bernie McKeever
703.749.9483
bernie.mckeever@
transwestern.com

Bernie McKeever, Jr.
703.749.9462
bernard.mckeever@
transwestern.com

SMALL SUITES
AVAILABLE

OUTSTANDING **VIEWS**

IMMEDIATE 66 & 123 **ACCESS**

FLINT HILL CENTRE

3050 Chain Bridge Road, Oakton VA

SPACE AVAILABILITY

\$26.00 PSF, Full Service

3rd
Floor

4,818 SF

4th
Floor

3,327 – 4,436 SF

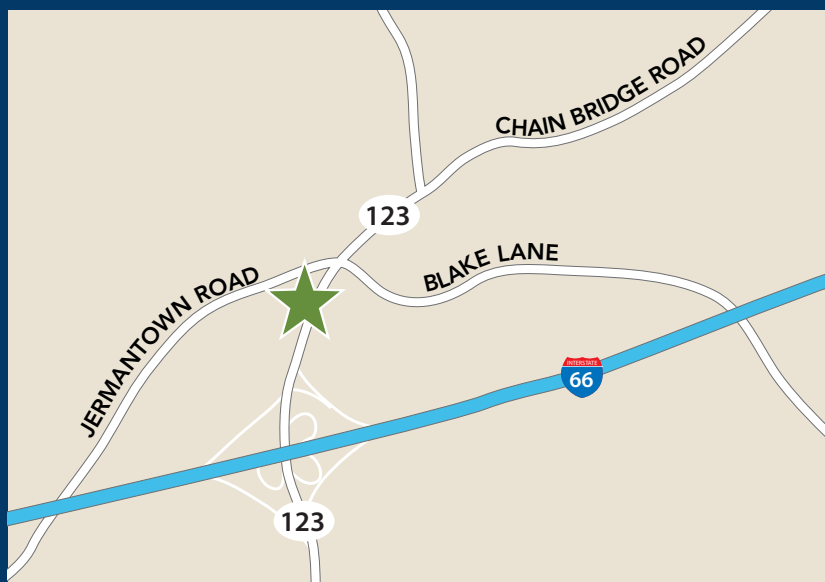
5th
Floor

7,896 SF

Immediate access to
Route 123 and I-66

AMENITIES

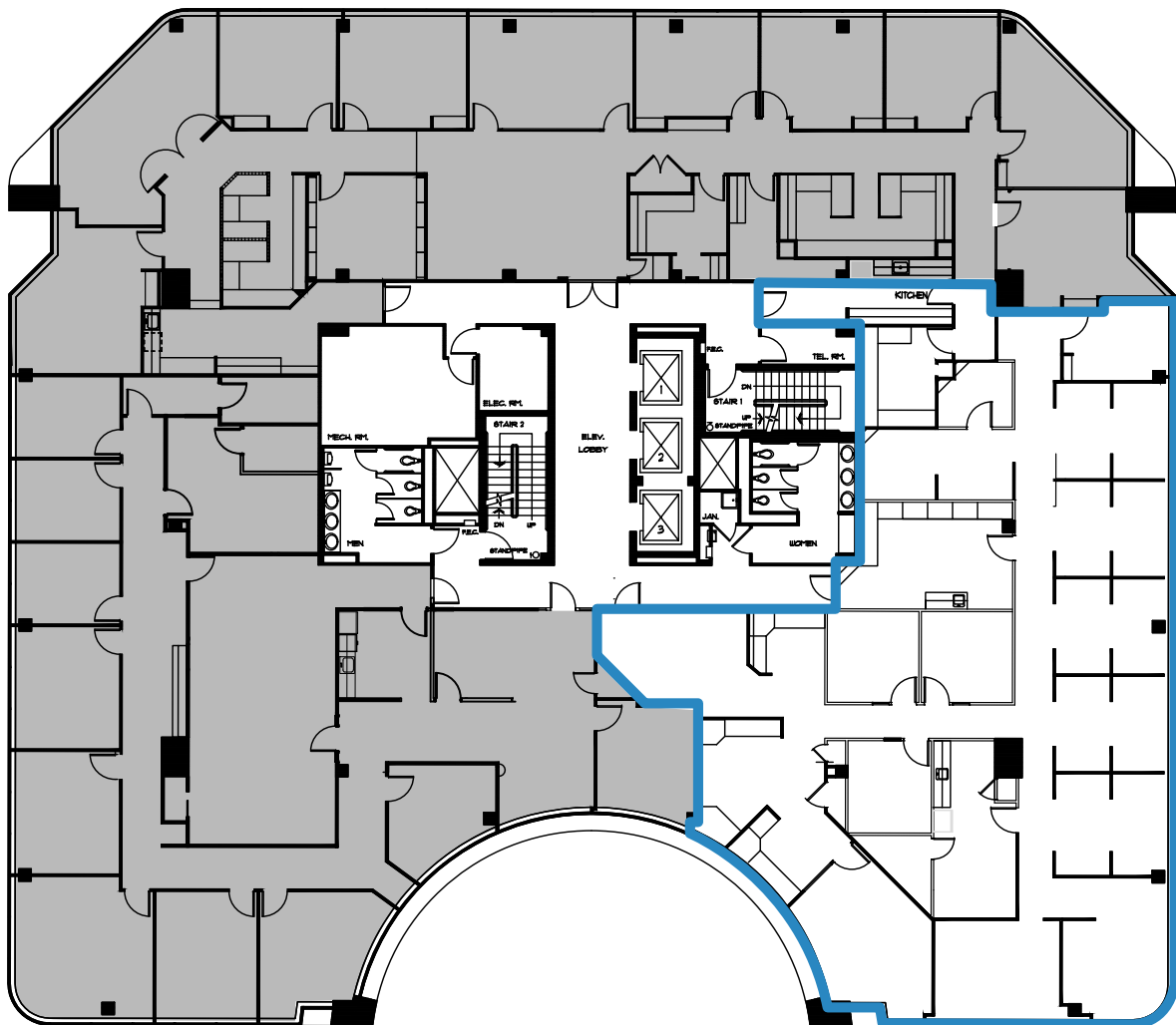
- Parking at 3.70/1,000 with free covered parking available
- Approximate 10-15 minute Metrobus and Fairfax Connector bus ride to the Vienna/GMU Metro Station consistently throughout the day from the front of the building
- Abundant Windowline



THIRD FLOOR

Suite 310 - 4,818 SF

Elevator lobby entrance
Built-in work stations
Conference room
Kitchen
Available Immediately



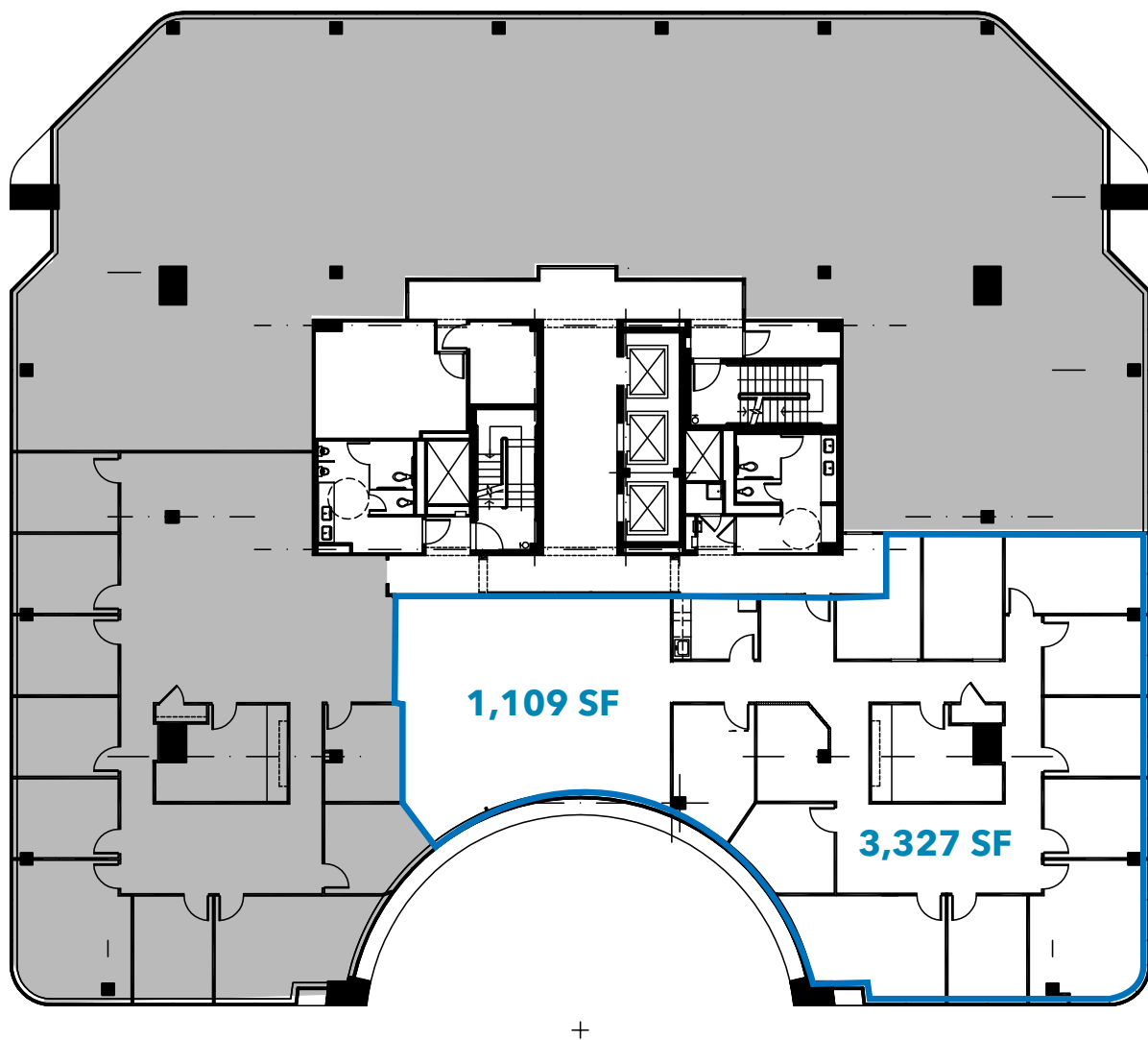
FOURTH FLOOR

Suite 420 - 3,327 – 4,436 SF

Excellent views

Elevator lobby entrance

Abundant windowline



FIFTH FLOOR

Suite 500 - 7,896 SF

Direct elevator lobby exposure

Mix of open and closed offices

SCIF space with ICD 705 Rating

1.5 Ton Supplemental HVAC in LAN room





7900 Tysons One Place
Suite 600
McLean, VA 22102
703.821.0040
transwestern.com

Alan Asman
703.749.9464
alan.asman@transwestern.com

Bernie McKeever
703.749.9483
bernie.mckeever@transwestern.com

Bernie McKeever, Jr.
703.749.9462
bernard.mckeever@transwestern.com