



MEDICAL SPACE FOR LEASE

SCHAUMBURG MEDICAL ARTS BUILDING

1321 TOWER ROAD SCHAUMBURG, IL



BUILDING FEATURES:

- 2,500-5,890 SF Medical or Office Space Available
- Located just west of intersection of Meacham Road & Tower Road
- Minutes from RT 53 & I-90
- Tenant controlled HVAC & 24-hour tenant access
- Comcast high-speed internet and cable available
- Located Just North of Woodfield Mall in Major shopping district
- Building Monument Sign with Tenant Signage Available
- High-end Medical buildout
- Zoned B-2
- Abundant onsite Parking via access agreement
- Asking Rent: \$18.00-\$20.00 PSF Modified Gross
- Divisible down to approx. 2,500 SF or 3,390 SF

AVAILABLE SPACE:

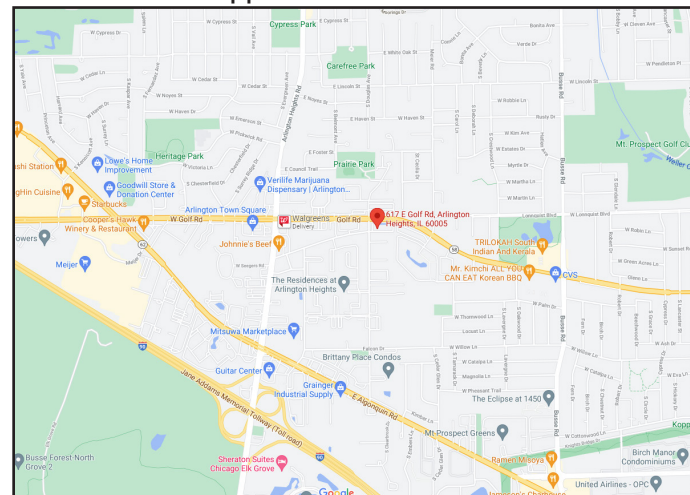
BLDNG #	SUITE	SIZE	Details
1321	A	2,500-5,890 SF	Former Chicago Liposuction Medical Space

*Former Medical Space with 8 exam rooms with sinks, lab area, reception, offices, Procedure rooms & more!!
Price Reduction

FOR MORE INFORMATION:

RANDY OLCZYK
President/Principal
Direct: 847.246.9611
randy@chicagolandcommercial.com

RAY OKIGAWA
Senior Vice President
Direct: 847.246.9632
ray@chicagolandcommercial.com



Chicagoland
Commercial
REAL ESTATE

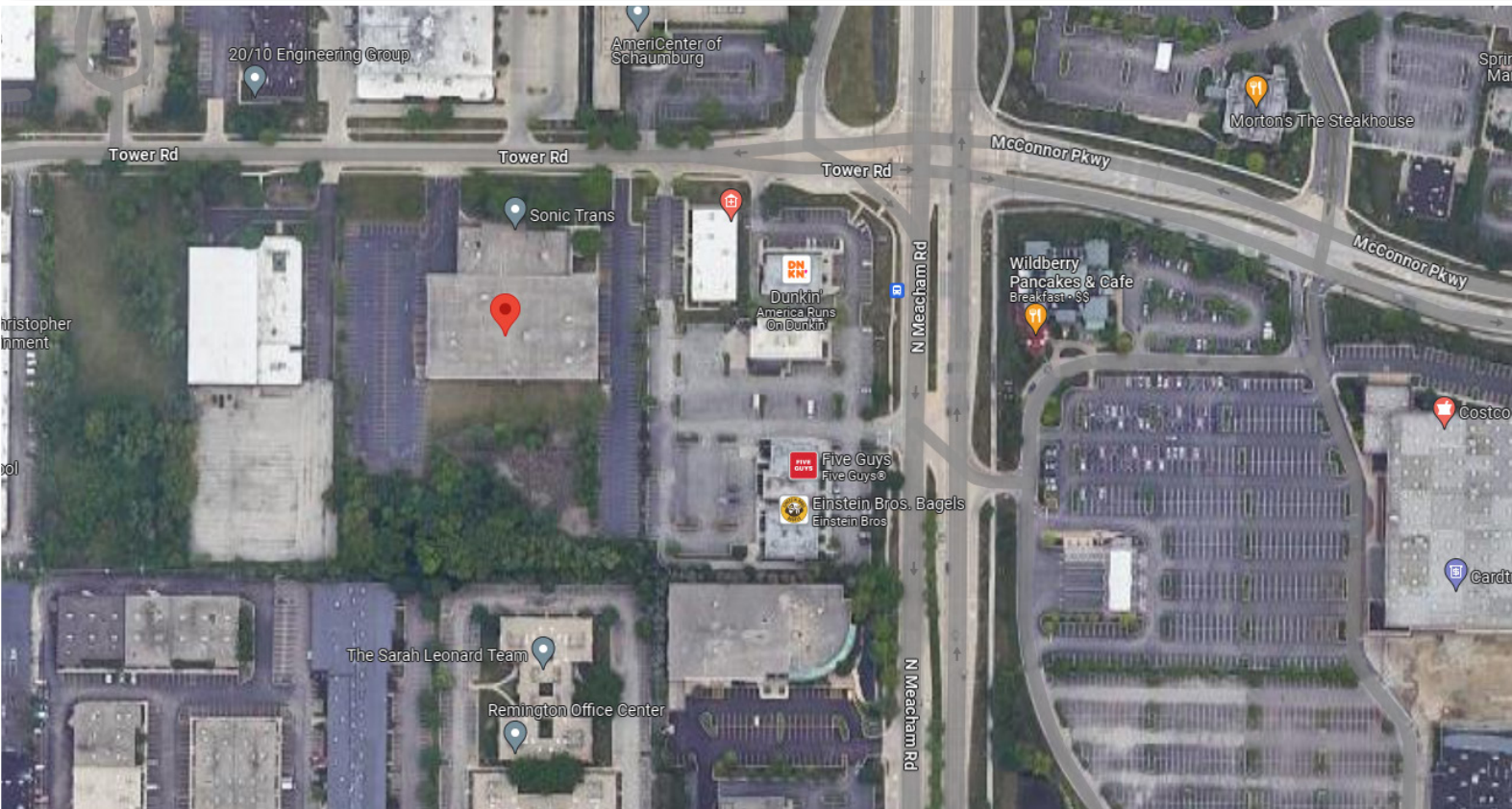
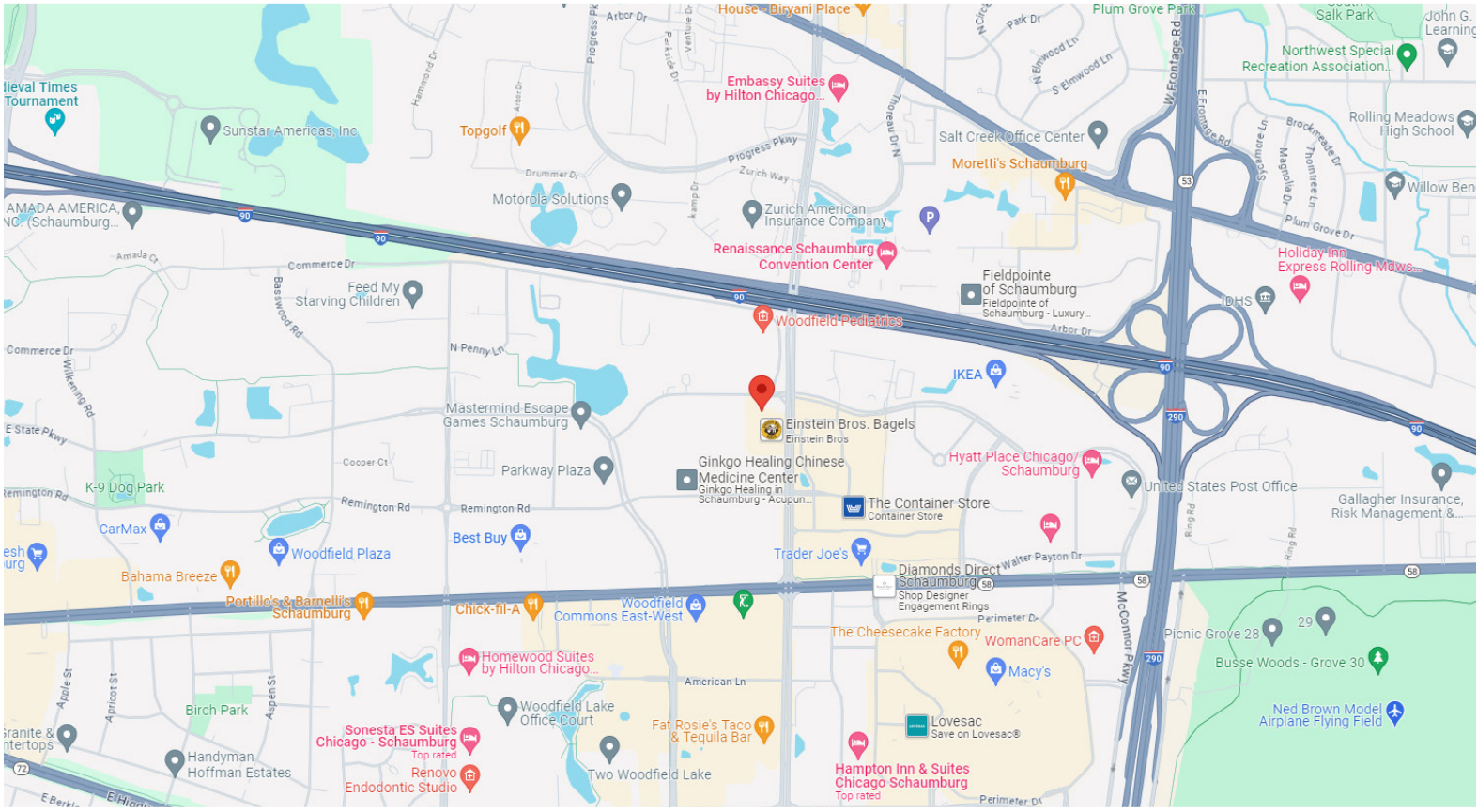
4811 Emerson Ave Suite 112, Palatine, IL



MEDICAL SPACE FOR LEASE

SCHAUMBURG MEDICAL ARTS BUILDING

1321 TOWER ROAD SCHAUMBURG, IL





MEDICAL SPACE FOR LEASE

SCHAUMBURG MEDICAL ARTS BUILDING
1321 TOWER ROAD SCHAUMBURG, IL

BUILDING PHOTOGRAPHS



BEAUTIFULLY LANDSCAPED GROUNDS





MEDICAL SPACE FOR LEASE

SICHAUMBURG MEDICAL ARTS BUILDING
1321 TOWER ROAD SCHAUMBURG, IL

BUILDING PHOTOGRAPHS

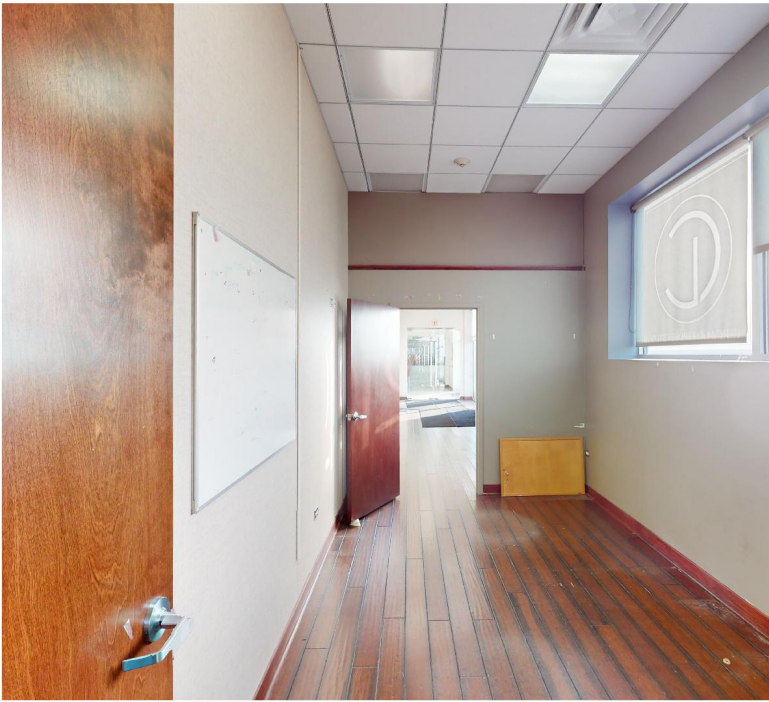




MEDICAL SPACE FOR LEASE

SICHAUMBURG MEDICAL ARTS BUILDING
1321 TOWER ROAD SCHAUMBURG, IL

BUILDING PHOTOGRAPHS

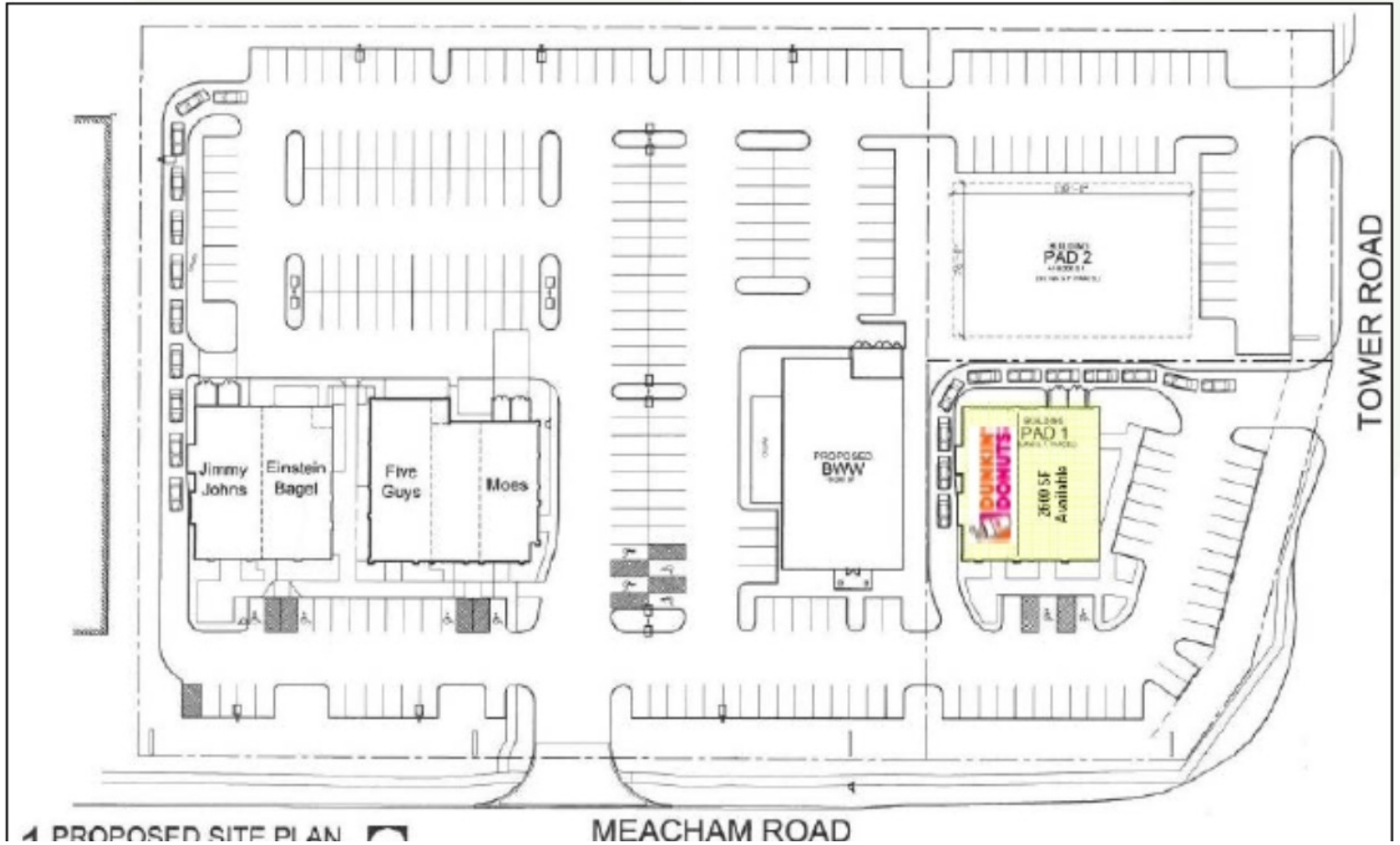




MEDICAL SPACE FOR LEASE

SCHAUMBURG MEDICAL ARTS BUILDING
1321 TOWER ROAD SCHAUMBURG, IL

BUILDING SITE PLAN



4 PROPOSED SITE PLAN

MEACHAM ROAD

TOWER ROAD



MEDICAL SPACE FOR LEASE

SCHAUMBURG MEDICAL ARTS BUILDING

1321 TOWER ROAD SCHAUMBURG, IL

*****FORMER CHICAGO LIPOSUCTION SPACE*** SUITE A OR B (2,500-5,890 SF) FLOOR PLAN**



FLOOR PLAN

■ *** 5,890 SF space is divisible down to approx. 2,500 SF or 3,390 SF ***