

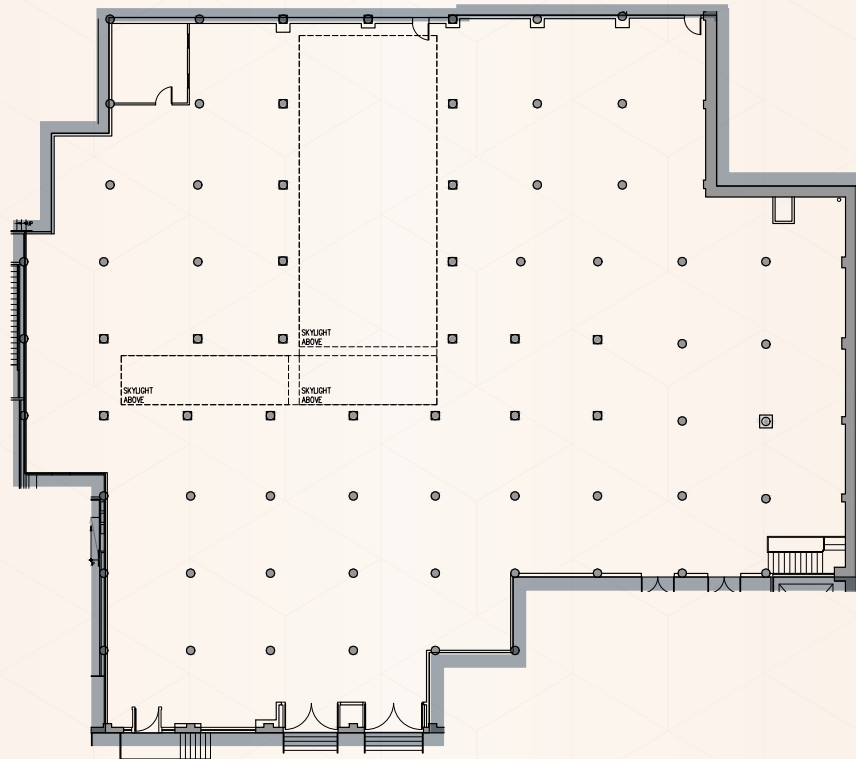
416 WEST 13TH STREET

MEATPACKING DISTRICT | NEW YORK CITY

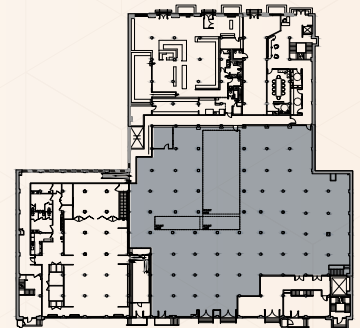


Ground Floor – Space A

15,438 SF



- Unique ground floor retail opportunity with high ceilings (15'-18' slab heights), center skylight, polished concrete floors, and exposed brick throughout.
- Oversized glass windows lining Little West 12th Street with grand glass-front entrance.
- Existing building systems in place.
- Additional 2,900 SF available on the lower level for storage (12'+ ceilings)



For more information, please contact exclusive leasing agents:

JOSEPH GERVINO

D. 212 858 0798 | M. 631 988 5320
joseph.gervino@avisonyoung.com

ALEXIS ODGERS

D. 917 877 6027 | M. 484 832 9370
alexis.odgers@avisonyoung.com

PETER JOHNSON

D. 212 729 6632 | M. 203 536 1990
peter.johnson@avisonyoung.com

ALEXA DAMON

D. 212 371 2277 | M. 631 807 1592
alexa.damon@avisonyoung.com

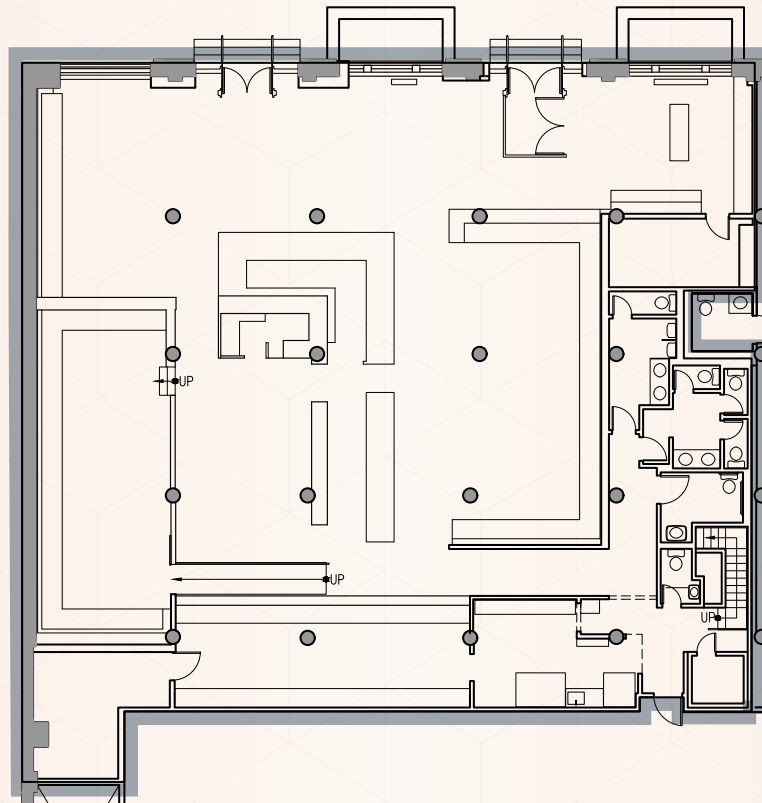
416 WEST 13TH STREET

MEATPACKING DISTRICT | NEW YORK CITY

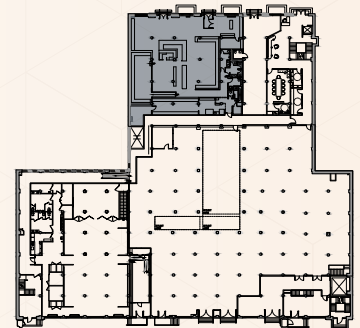


Ground Floor – Space B

5,126 SF



- Beautifully built restaurant installation with large center bar, one private event/dining room, and hardwood floors throughout.
- Existing HVAC, lighting, bathrooms, and full-service kitchen with venting in place.
- 15' ceiling heights
- Floor-to-ceiling glass windows and entrance on West 13th Street.
- Liquor license possible.



For more information, please contact exclusive leasing agents:

JOSEPH GERVINO

D. 212 858 0798 | M. 631 988 5320
joseph.gervino@avisonyoung.com

PETER JOHNSON

D. 212 729 6632 | M. 203 536 1990
peter.johnson@avisonyoung.com

ALEXIS ODGERS

D. 917 877 6027 | M. 484 832 9370
alexis.odgers@avisonyoung.com

ALEXA DAMON

D. 212 371 2277 | M. 631 807 1592
alexa.damon@avisonyoung.com

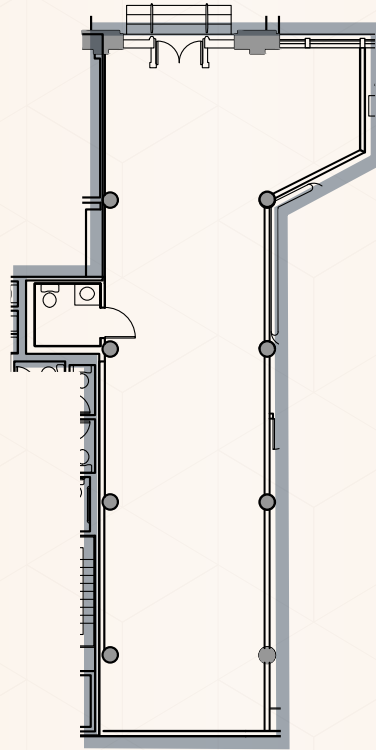
416 WEST 13TH STREET

MEATPACKING DISTRICT | NEW YORK CITY

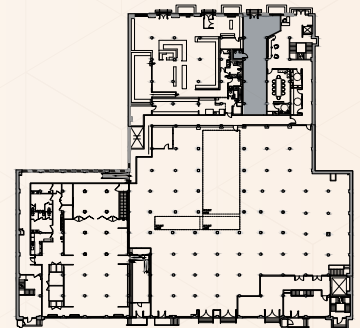


Ground Floor – Space C

1,320 SF



- Ground floor retail opportunity with glass-front entrance off West 13th Street.
- Existing building systems in place.
- Concrete floors throughout
- Current installation features multiple rooms that can be upgraded or demolished.
- 15' ceiling heights



For more information, please contact exclusive leasing agents:

JOSEPH GERVINO

D. 212 858 0798 | M. 631 988 5320
joseph.gervino@avisonyoung.com

PETER JOHNSON

D. 212 729 6632 | M. 203 536 1990
peter.johnson@avisonyoung.com

ALEXIS ODGERS

D. 917 877 6027 | M. 484 832 9370
alexis.odgers@avisonyoung.com

ALEXA DAMON

D. 212 371 2277 | M. 631 807 1592
alexa.damon@avisonyoung.com

416 WEST 13TH STREET

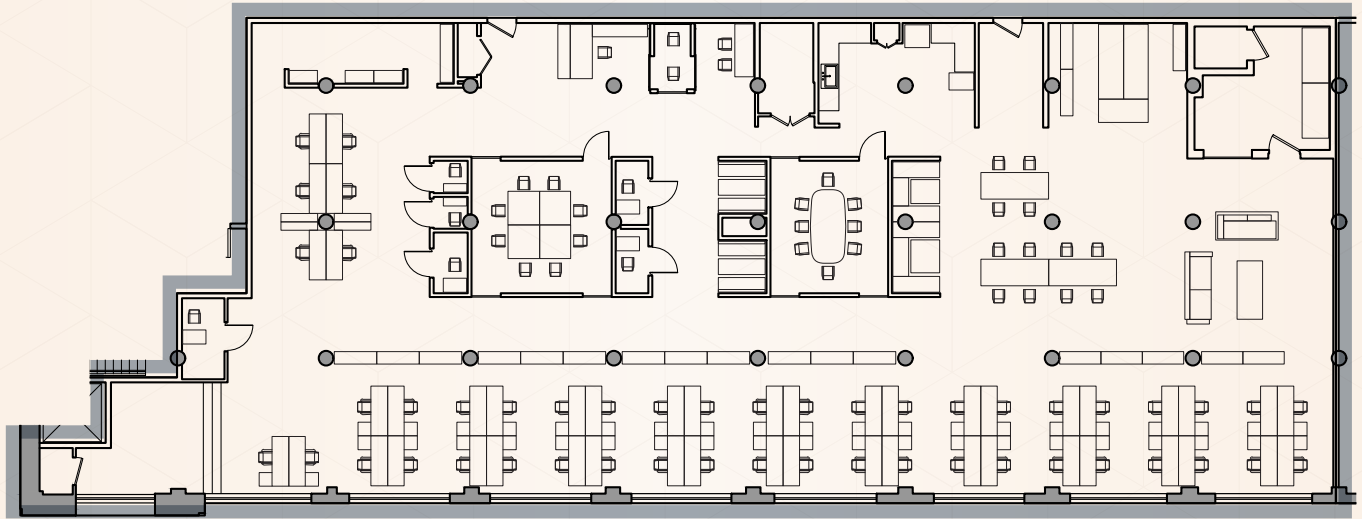
MEATPACKING DISTRICT | NEW YORK CITY



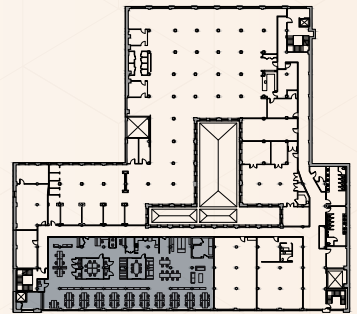
Second Floor – Suite 203

8,503 RSF

Suite can be demised



- Modern space with natural light from oversized south-facing windows, exposed brick, concrete floors, and 15' ceilings.
- Fully furnished, wired, and ready for immediate occupancy.
- Features: open seating for 43, 2 conference rooms, 6 phone booths, pantry with seating, wellness room, collaboration areas, soundproof podcast studio, reception, and all-hands area



For more information, please contact exclusive leasing agents:

JOSEPH GERVINO

D. 212 858 0798 | M. 631 988 5320
joseph.gervino@avisonyoung.com

PETER JOHNSON

D. 212 729 6632 | M. 203 536 1990
peter.johnson@avisonyoung.com

ALEXIS ODGERS

D. 917 877 6027 | M. 484 832 9370
alexis.odgers@avisonyoung.com

ALEXA DAMON

D. 212 371 2277 | M. 631 807 1592
alexa.damon@avisonyoung.com

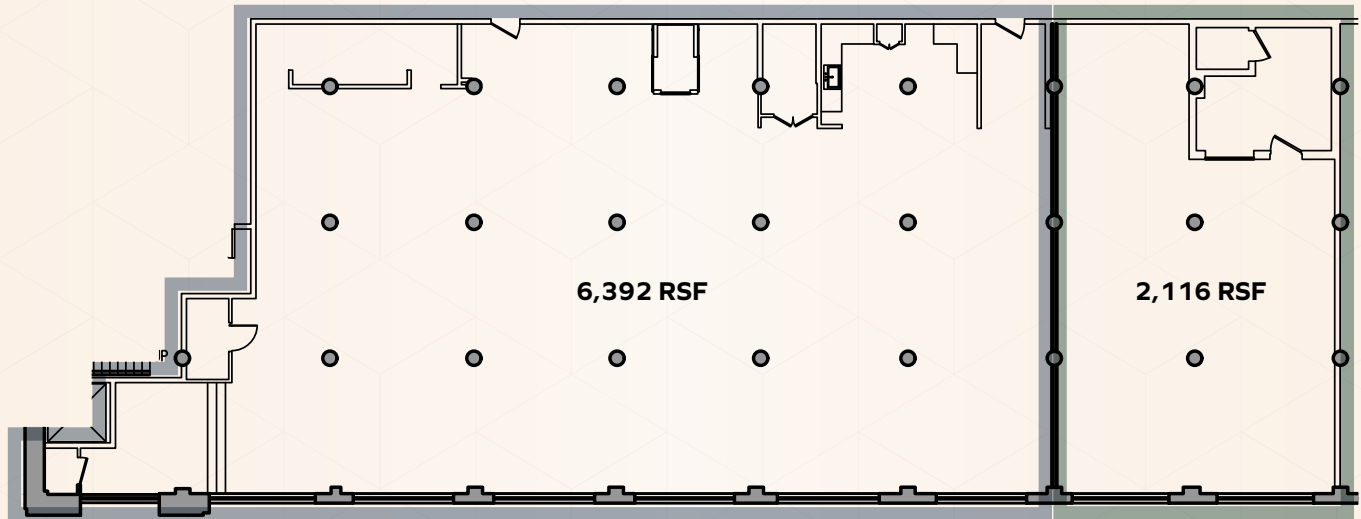
416 WEST 13TH STREET

MEATPACKING DISTRICT | NEW YORK CITY

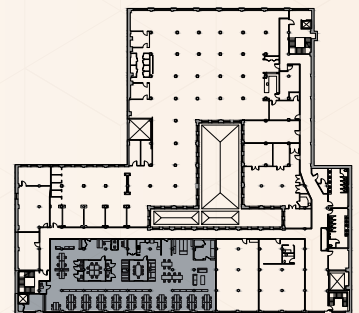


Second Floor – Suite 203

Possible Divisions - 6,392 RSF / 2,116 RSF



- Modern space with natural light from oversized south-facing windows, exposed brick, concrete floors, and 15' ceilings.
- Fully furnished, and wired



For more information, please contact exclusive leasing agents:

JOSEPH GERVINO

D. 212 858 0798 | M. 631 988 5320
joseph.gervino@avisonyoung.com

PETER JOHNSON

D. 212 729 6632 | M. 203 536 1990
peter.johnson@avisonyoung.com

ALEXIS ODGERS

D. 917 877 6027 | M. 484 832 9370
alexis.odgers@avisonyoung.com

ALEXA DAMON

D. 212 371 2277 | M. 631 807 1592
alexa.damon@avisonyoung.com

416 WEST 13TH STREET

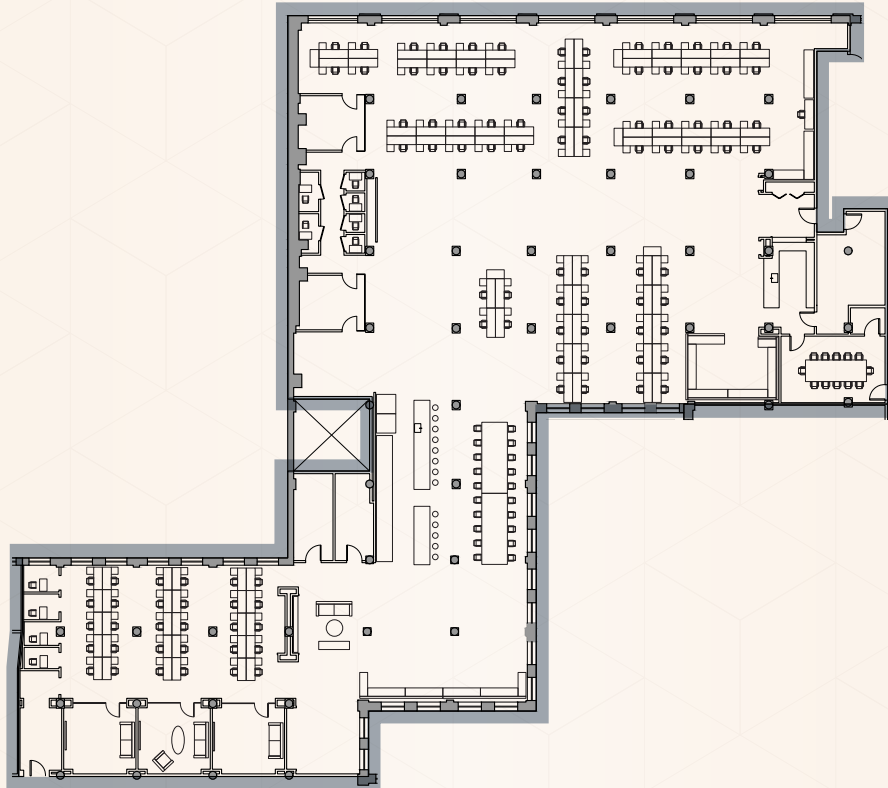
MEATPACKING DISTRICT | NEW YORK CITY



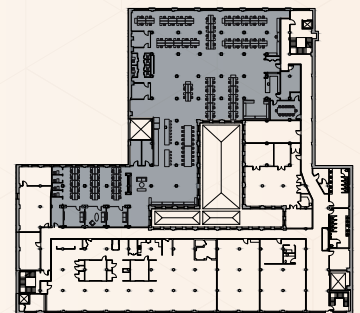
Second Floor – Suite 207

18,685 RSF

Suite can be demised



- Modern, colorful space with abundant natural light, exposed brick, concrete floors, and 15' ceilings.
- Fully furnished, wired, and move-in ready.
- Features: open seating for 112, 6 conference rooms, 8 phone booths, oversized and small pantries, 2 wellness rooms, collaboration areas, reception, and all-hands area.



For more information, please contact exclusive leasing agents:

JOSEPH GERVINO

D. 212 858 0798 | M. 631 988 5320
joseph.gervino@avisonyoung.com

ALEXIS ODGERS

D. 917 877 6027 | M. 484 832 9370
alexis.odgers@avisonyoung.com

PETER JOHNSON

D. 212 729 6632 | M. 203 536 1990
peter.johnson@avisonyoung.com

ALEXA DAMON

D. 212 371 2277 | M. 631 807 1592
alexa.damon@avisonyoung.com

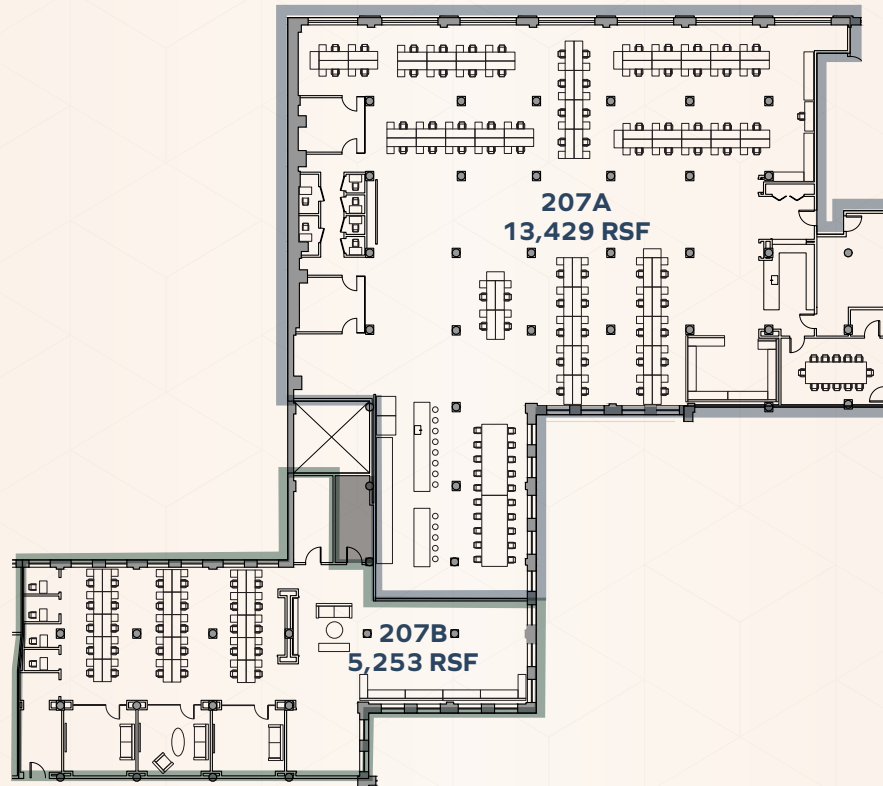
416 WEST 13TH STREET

MEATPACKING DISTRICT | NEW YORK CITY

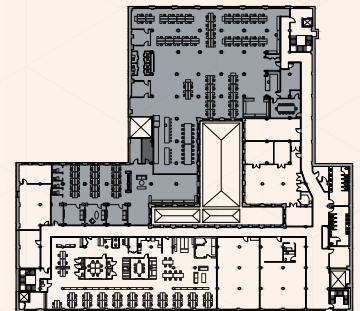


Second Floor – Suite 207 – Divided

Possible Divisions - 207A - 13,429 RSF / 207B - 5,253 RSF



- Modern, colorful space with abundant natural light, exposed brick, concrete floors, and 15' ceilings.
- Fully furnished, wired, and move-in ready.
- 207A | 13,429 RSF - Features: open seating for 82, 1 boardroom, 2 conference rooms, 5 phone booths, oversized and small pantries, 1 wellness rooms, collaboration areas, reception, and all-hands area.
- 207B | 5,253 RSF - Features: open seating for 30, 3 conference rooms, 3 phone booths, oversized and small pantries, 1 wellness rooms, collaboration areas, reception, and all-hands area.



For more information, please contact exclusive leasing agents:

JOSEPH GERVINO

D. 212 858 0798 | M. 631 988 5320
joseph.gervino@avisonyoung.com

ALEXIS ODGERS

D. 917 877 6027 | M. 484 832 9370
alexis.odgers@avisonyoung.com

PETER JOHNSON

D. 212 729 6632 | M. 203 536 1990
peter.johnson@avisonyoung.com

ALEXA DAMON

D. 212 371 2277 | M. 631 807 1592
alexa.damon@avisonyoung.com

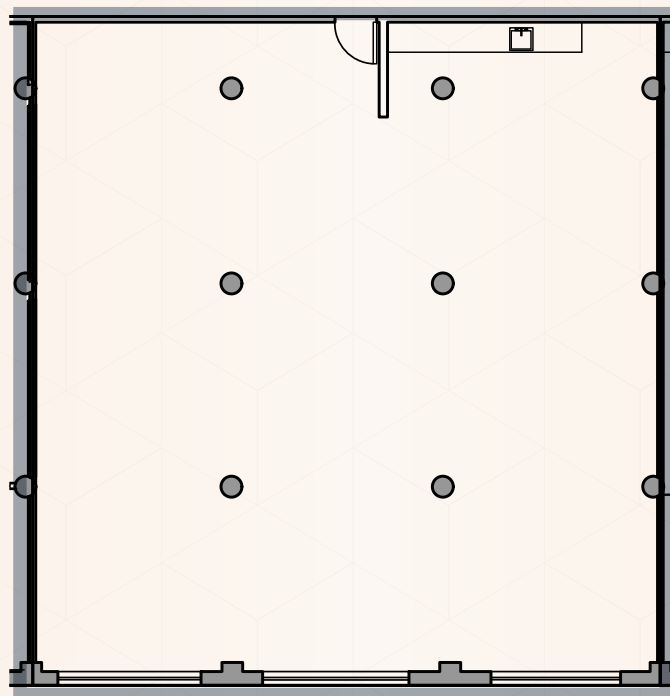
416 WEST 13TH STREET

MEATPACKING DISTRICT | NEW YORK CITY

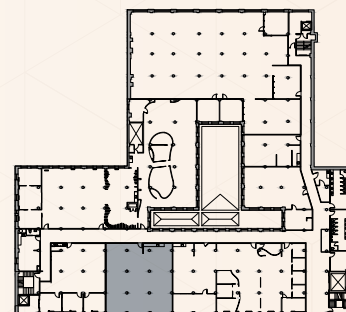


Third Floor – Suite 304

3,144 RSF



- Bright space featuring an open layout, pantry, and view of The High Line.
- Finished with exposed brick, concrete floors, oversized windows, 11'6" ceilings, and a skylight.



For more information, please contact exclusive leasing agents:

JOSEPH GERVINO

D. 212 858 0798 | M. 631 988 5320
joseph.gervino@avisonyoung.com

PETER JOHNSON

D. 212 729 6632 | M. 203 536 1990
peter.johnson@avisonyoung.com

ALEXIS ODGERS

D. 917 877 6027 | M. 484 832 9370
alexis.odgers@avisonyoung.com

ALEXA DAMON

D. 212 371 2277 | M. 631 807 1592
alexa.damon@avisonyoung.com

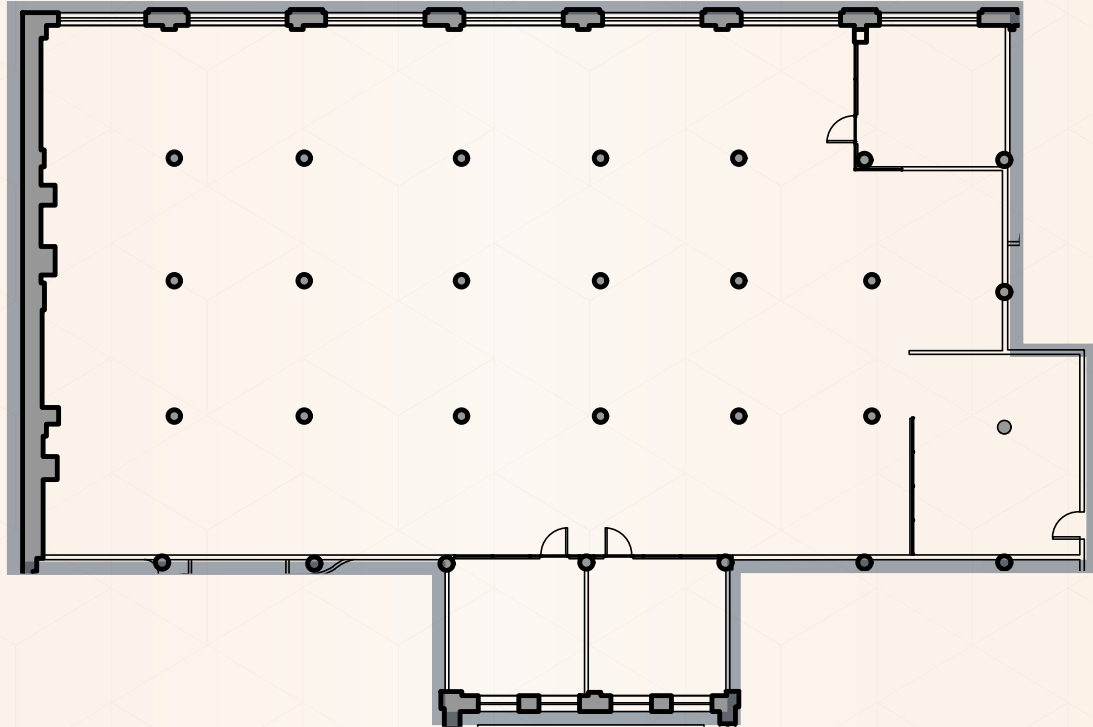
416 WEST 13TH STREET

MEATPACKING DISTRICT | NEW YORK CITY

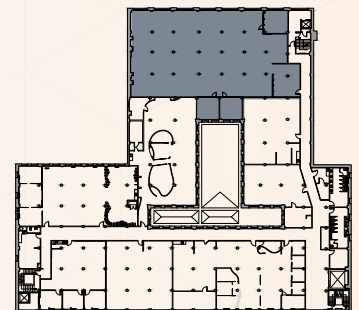


Third Floor – Suite 312

10,158 RSF



- Built space featuring 3 medium conference rooms, large open area, pantry, and a reception area.
- Finished with exposed brick, multiple skylights, concrete floors and 11'6" ceilings.



For more information, please contact exclusive leasing agents:

JOSEPH GERVINO

D. 212 858 0798 | M. 631 988 5320
joseph.gervino@avisonyoung.com

PETER JOHNSON

D. 212 729 6632 | M. 203 536 1990
peter.johnson@avisonyoung.com

ALEXIS ODGERS

D. 917 877 6027 | M. 484 832 9370
alexis.odgers@avisonyoung.com

ALEXA DAMON

D. 212 371 2277 | M. 631 807 1592
alexa.damon@avisonyoung.com