

GE PROPERTY

佳 富 地 產

FOR LEASE

Potential Drive-Thru



Raymond Ho
Vice President
DRE# 01868322

4055 S Eastern Ave, Las Vegas, NV 89119

Office (626) 458-9000
Cell (626) 297-1228
Raymond@geproperty.com

407 W. VALLEY BLVD, SUITE 4, ALHAMBRA, CA 91803
WWW.GEPROPERTY.COM
DRE# 01841262

GE PROPERTY

佳 富 地 產



OFFERING

4055 S Eastern Ave
Las Vegas, NV 89119

Rate: \$ 3.50/SQFT + NNN

Building Size: ~2,400 SQFT

Lot Size: ~20,038 SQFT

- Standalone building
- Conveniently located at the crossroad between E. Flamingo Rd and S. Eastern Ave
- High traffic count
- High Gross Sales Location
- Potential for Drive-thru
- Available April 2026



Raymond Ho
Vice President
DRE# 01868322

Office (626) 458-9000
Cell (626) 297-1228
Raymond@geproperty.com

407 W. VALLEY BLVD, SUITE 4, ALHAMBRA, CA 91803
WWW.GEPROPERTY.COM
DRE# 01841262

GE PROPERTY

佳富地產

AERIAL



Raymond Ho
Vice President
DRE# 01868322

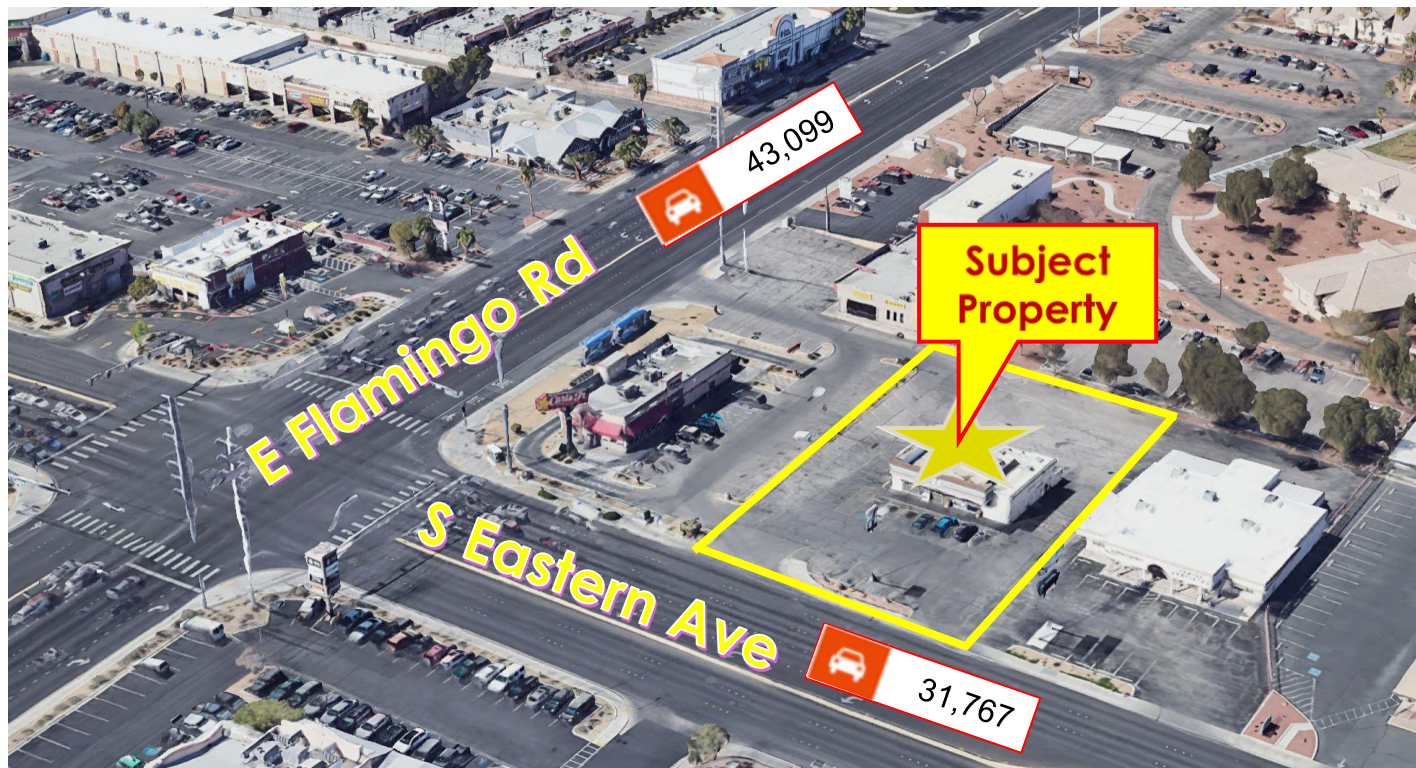
Office (626) 458-9000
Cell (626) 297-1228
Raymond@geproperty.com

407 W. VALLEY BLVD, SUITE 4, ALHAMBRA, CA 91803
WWW.GEPROPERTY.COM
DRE# 01841262

GE PROPERTY

佳富地產

TRAFFIC COUNT



Raymond Ho
Vice President
DRE# 01868322

Office (626) 458-9000
Cell (626) 297-1228
Raymond@geproperty.com

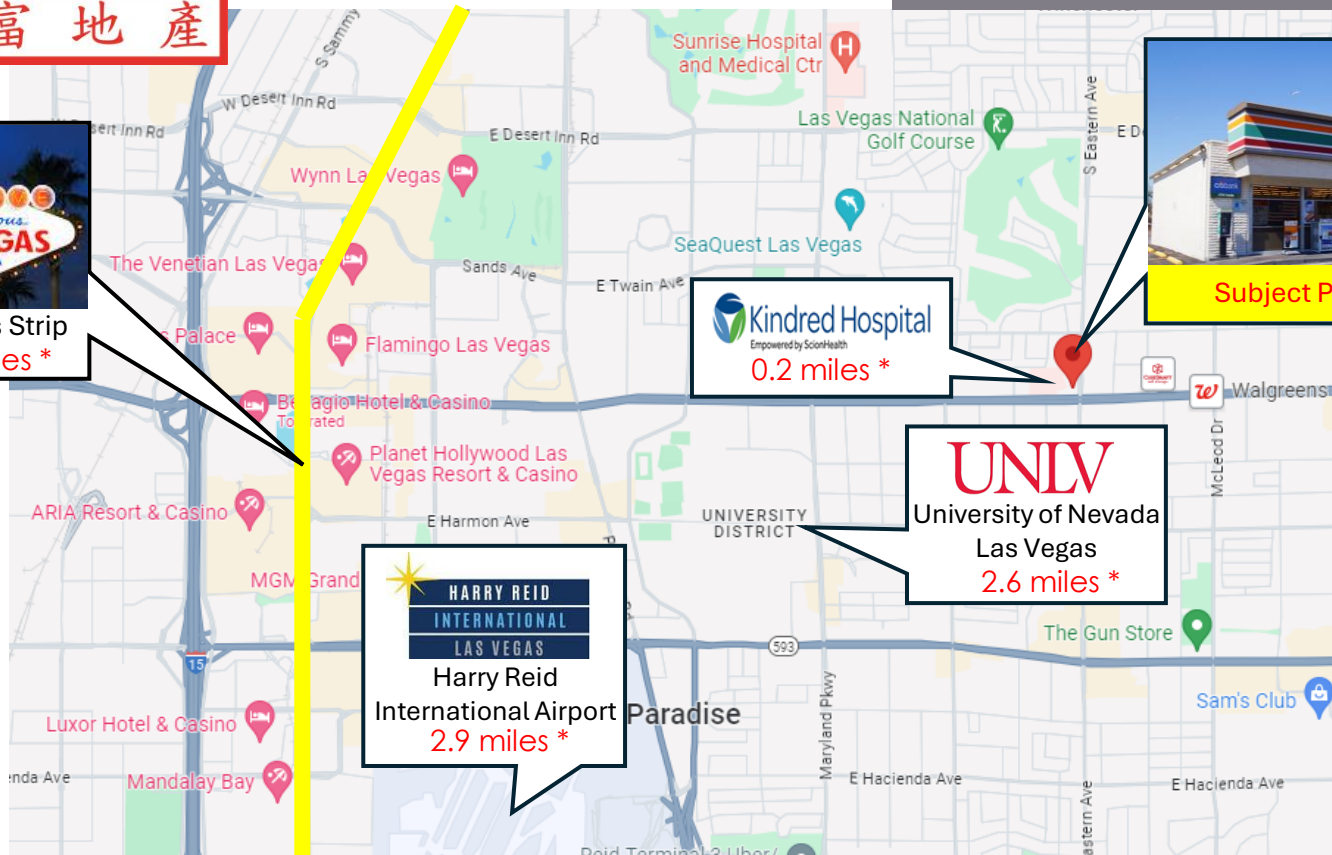
407 W. VALLEY BLVD, SUITE 4, ALHAMBRA, CA 91803
WWW.GEPROPERTY.COM
DRE# 01841262

GE PROPERTY

佳富地產



Las Vegas Strip
3.7 miles *



MAP



Raymond Ho
Vice President
DRE# 01868322

Office (626) 458-9000
Cell (626) 297-1228
Raymond@geproperty.com

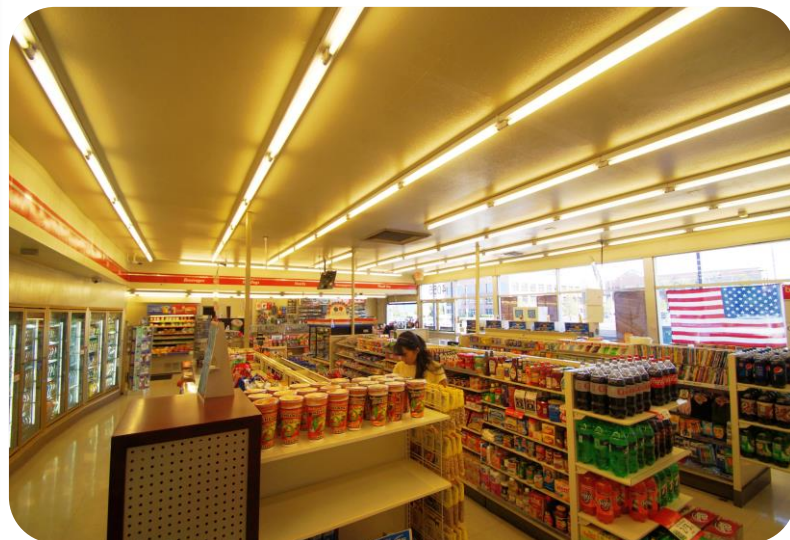
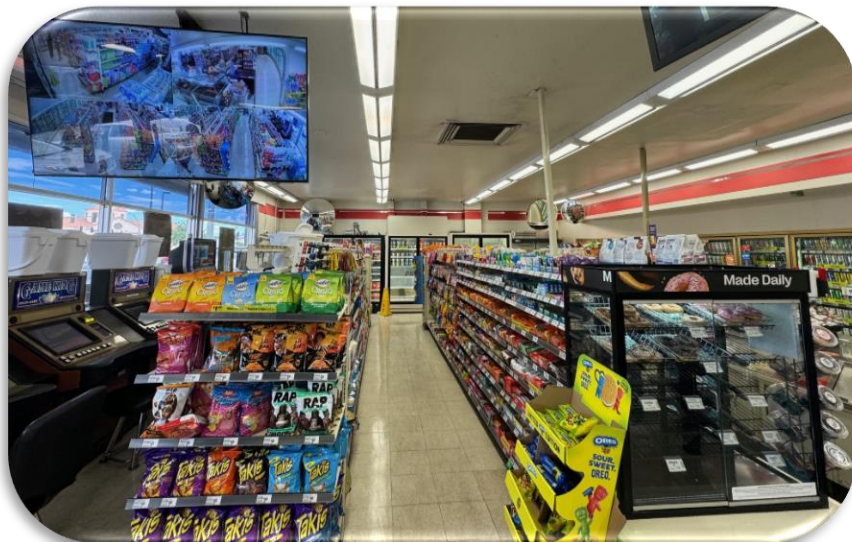
407 W. VALLEY BLVD, SUITE 4, ALHAMBRA, CA 91803
WWW.GEPROPERTY.COM
DRE# 01841262

* Distance to Subject Property

GE PROPERTY

佳富地產

PHOTOS



Raymond Ho
Vice President
DRE# 01868322

Office (626) 458-9000
Cell (626) 297-1228
Raymond@geproperty.com

407 W. VALLEY BLVD, SUITE 4, ALHAMBRA, CA 91803
WWW. GEPROPERTY.COM
DRE# 01841262



OUR COMPANY

For over 3 decades, GE Property Development, Inc. has provided real estate services for our clients in Los Angeles as well as our clients around the world. We provide a full array of real estate services in the areas of brokerage, development, leasing and management.

Our model is, "Let our results speak for themselves". We feel that our extensive portfolio speaks volumes about our experience and abilities.

Regardless of the real estate need, our firm can provide excellent service with one objective in mind; to meet our client's goals, expectations, and complete satisfaction. In doing so, we are able to increase revenues and decrease cost, demonstrating our unmatched reputation, professionalism, experience, and knowledge in the real estate industry.

G.E. Property Management, Inc. and its predecessor, Sun West Management, have served its investment clients as a full-service real estate company since 1983. Stephen Chan, the President and Founder of the firm, has been an active broker in the real estate field since 1977. The firm has acted as an acquisition consultant and broker for many local investors, foreign investors, and publicly-traded companies.

CORPORATE HEADQUARTERS

407 West Valley Boulevard, Suite 4
Alhambra, CA 91803

Office: 626-458-9000

Website: www.geproperty.com

DRE# 01841262



Stephen Chan
President and Founder
DRE# 00676562



Raymond Ho
Vice President
DRE# 01868322