

Watermark
by Lennar

LINO LAKES

I-35E
Park & Ride
NorBella Senior

4 COUNTY
SITE

UNDER
CONTRACT

amazon

DISTRIBUTION
ALTERNATIVES

CENTERVILLE

HUGO

Minnoco
Carbone's
LIQUOR
HARREN

Shell
CIRCLE K
WISEGUYS
PIZZA & PUB
YARD & QUARRY
DIRECT

Kwik
TRIP
MidWestOne
Bank
FIESTA CANCUN
GRILL & BAR
Mobil

DQ

Campanelle
RESTAURANT & BAR
DUNKIN'
McDonald's
Tostitos
MEXICAN
BURRITOS

NEW
HORIZON
ACADEMY
Associated
Eye Care

Park Dental
Ideal
Great Clips
Kwik
TRIP
Papa Murphy's
HEARTLAND
CREDIT UNION
BLUE HERON
GRILL
Health Partners
North Suburban Family Physicians
ANYTIME
FITNESS
NEW
HORIZON
Academy
GUYS & DOLLS
LAKE AREA BANK
Private Banking | 10 branches | Since 1955

SWQ I-35E & MAIN ST

2.28 ACRES FOR SALE LINO LAKES, MN

JON RAUSCH, CCIM, SIOR
Executive Director
+1 612 685 8288
jon.rausch@cushwake.com

BEN DREW
Senior Associate
+1 952 210 4637
ben.drew@cushwake.com



SWQ I-35E & MAIN ST LINO LAKES, MN

Property Highlights

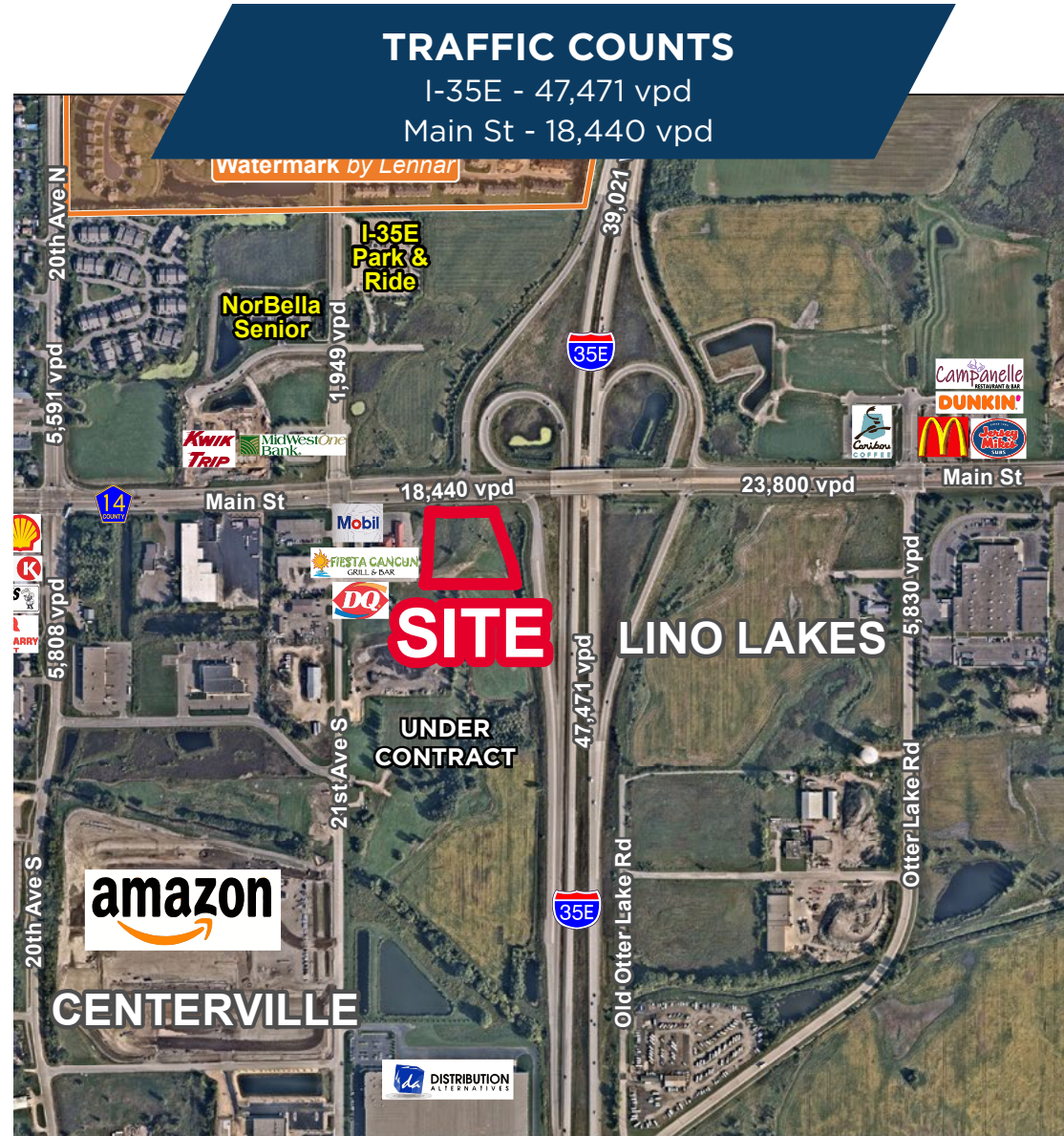
- Prime retail site
- Utilities to site
- Ryan Companies under contract to the South for an industrial development

Property Information

PID #	TBD
Acreage	2.28
Zoning	General Business
Tax	TBD

Demographics (2022)

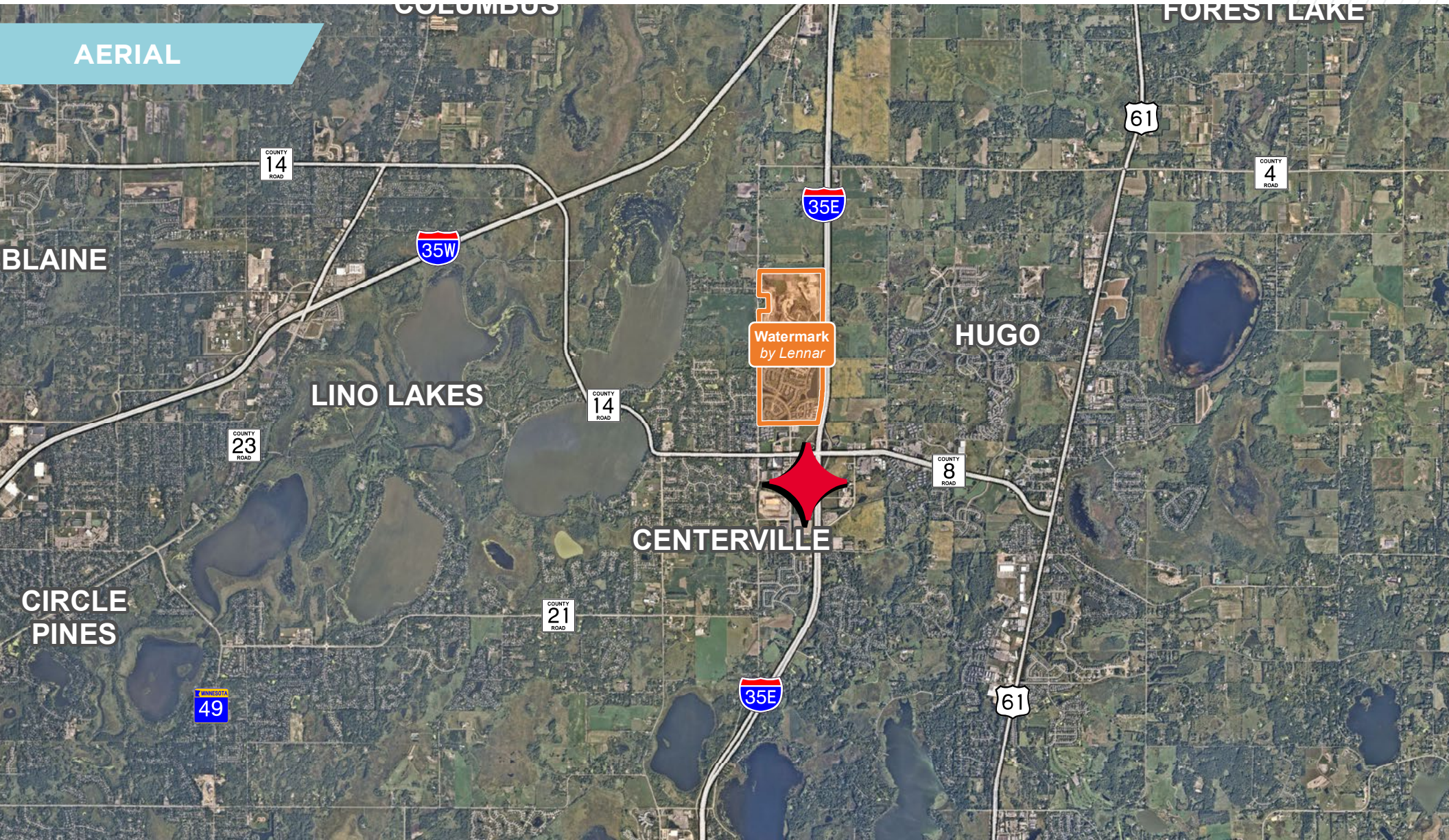
	1 Mile	3 Miles	5 Miles
Population	4,570	23,822	49,676
Households	1,664	8,695	17,607
Average HH Income	\$148,743	\$144,058	\$149,125
Daytime Population	1,223	4,540	12,610



SWQ I-35E & MAIN ST

LINO LAKES, MN

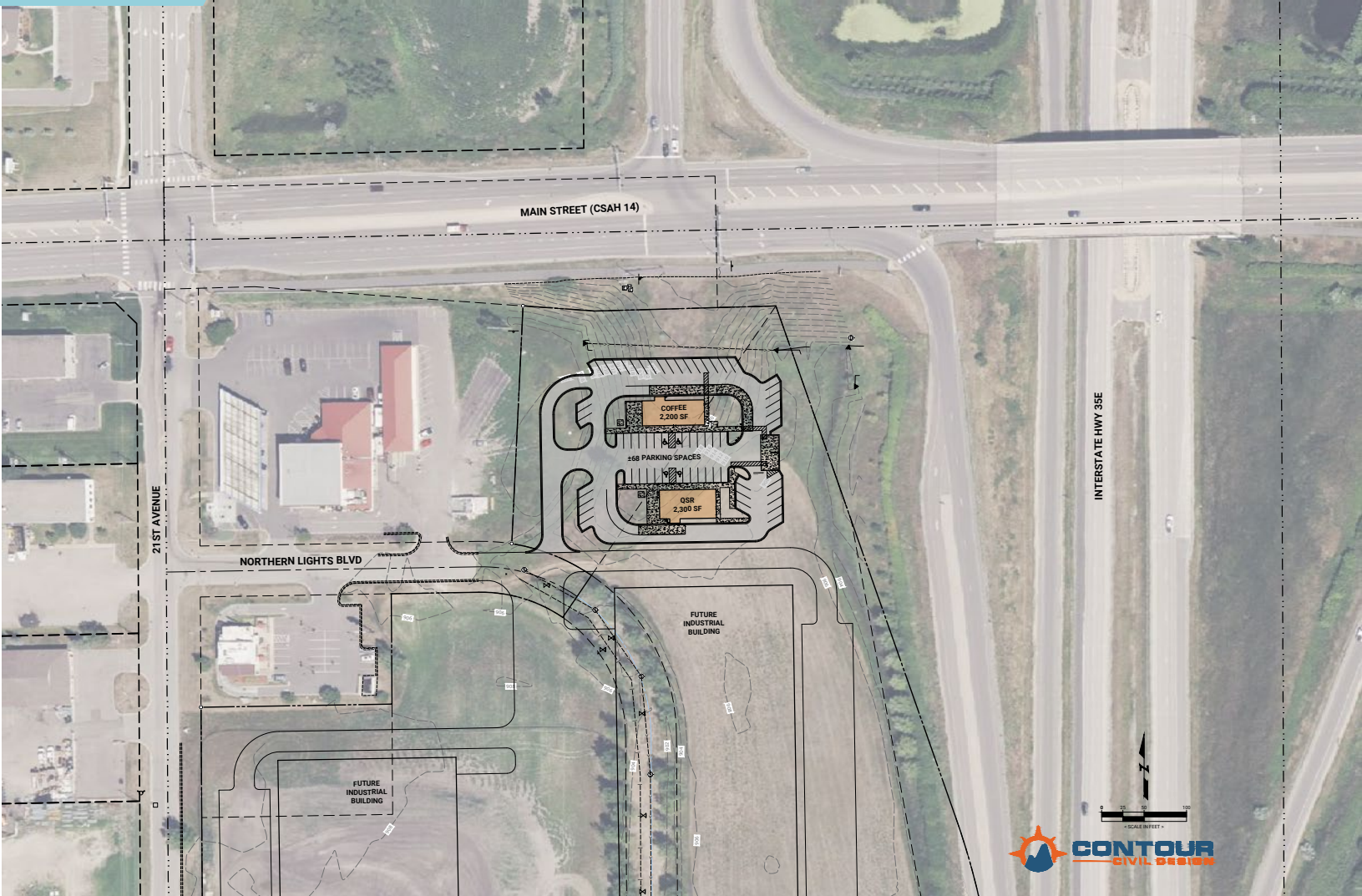
AERIAL



SWQ I-35E & MAIN ST

LINO LAKES, MN

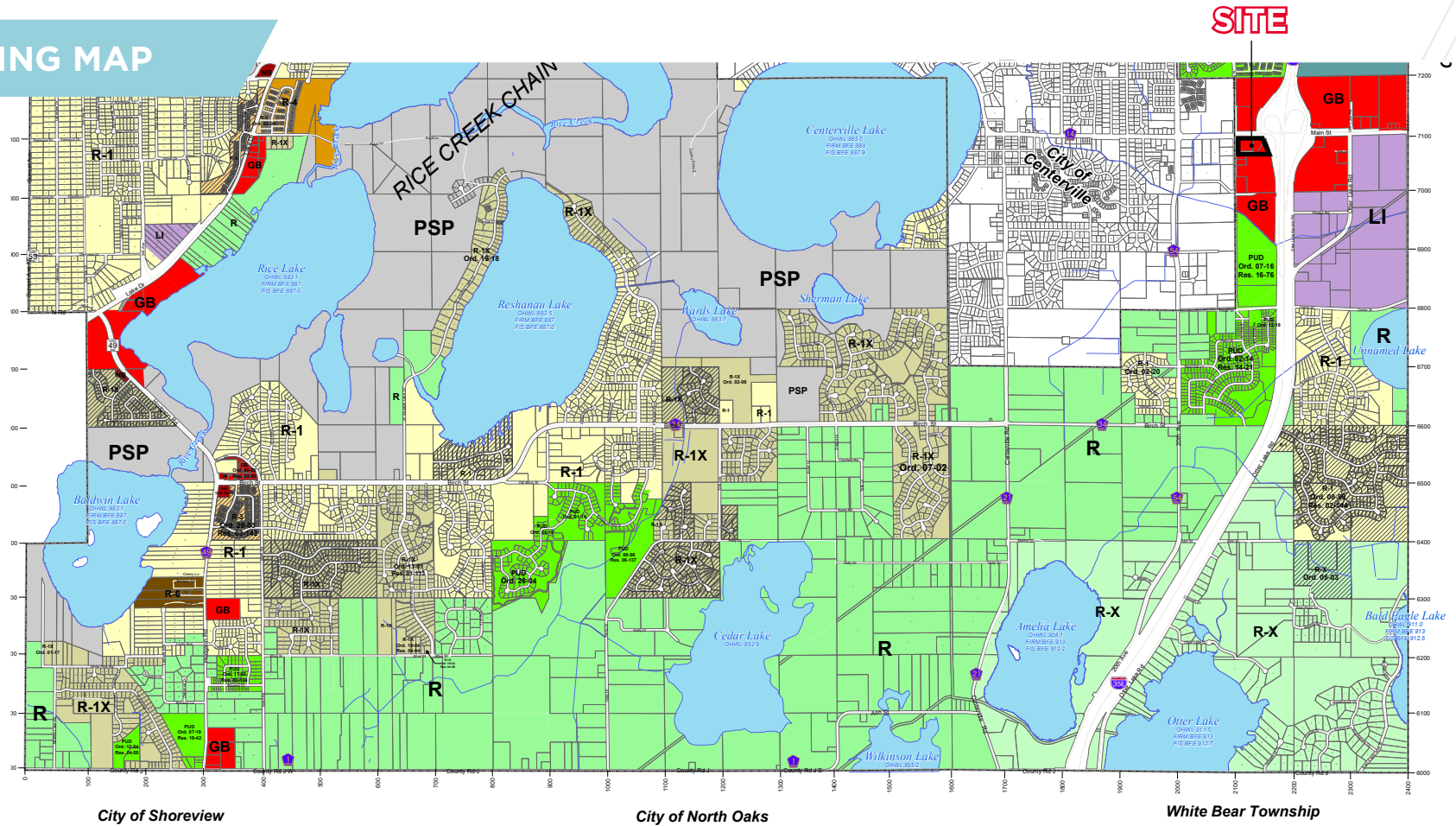
CONCEPT PLAN



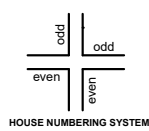
[CLICK ON SURVEY FOR PRINTABLE IMAGE](#)

SWQ I-35E & MAIN ST LINO LAKES, MN

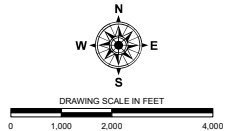
ZONING MAP



*Lino Lakes
Community Development
600 Town Center Parkway
Lino Lakes, Minnesota 55014
Phone (651) 982-2400*



HOUSE NUMBERING SYSTEM
Coordinate System:
Anoka County NAD83 Feet
Lambert Conformal Conic
Anoka County Parcel Data:
November 2021 Release

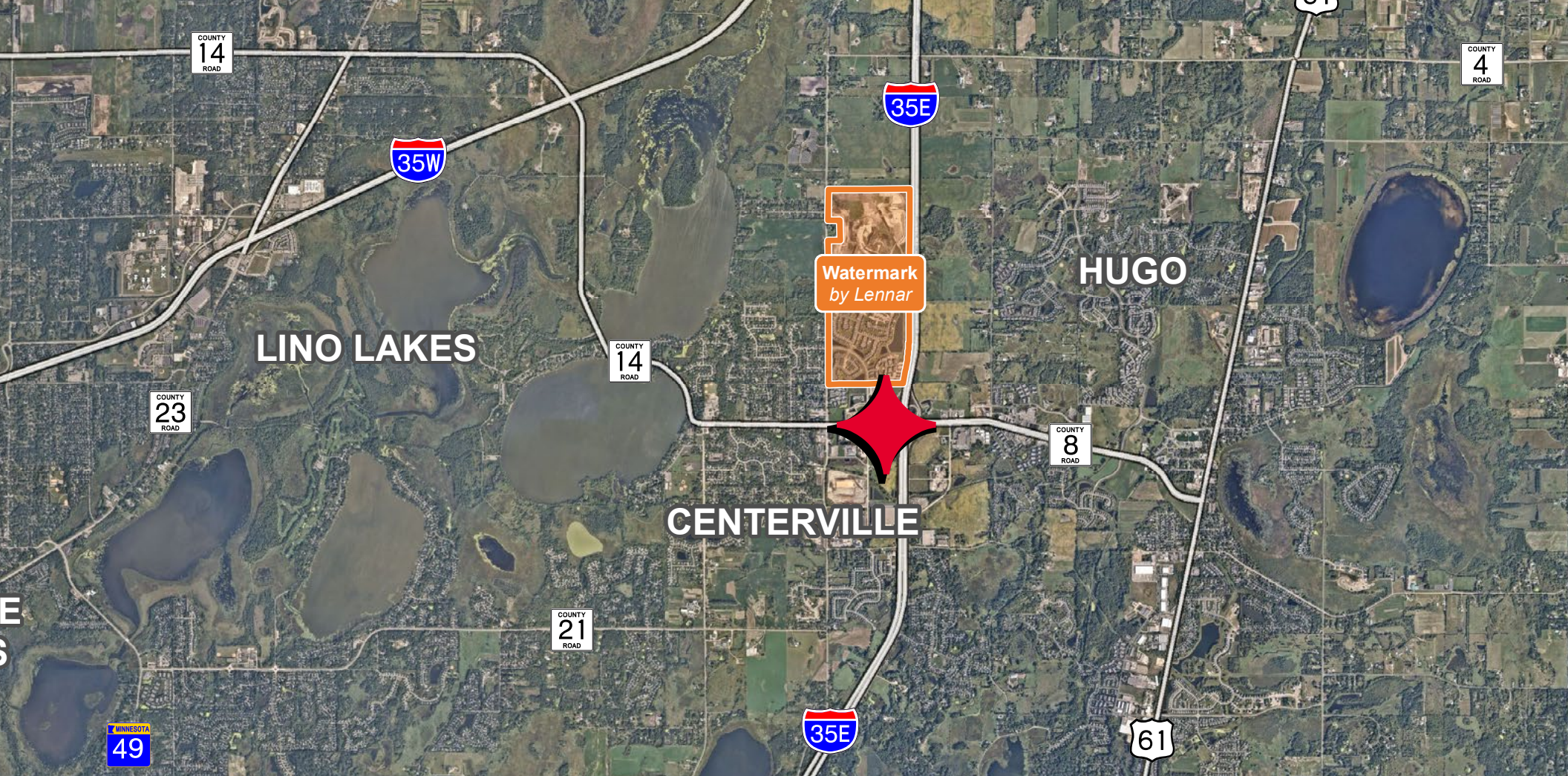


March 21, 2022
Maps are for illustrative purposes only.
Recent changes may not be included.
Land Use and Zoning Information
should be verified with City Staff.

Features	Zoning Type	Zoning Type	Zoning Type
Streams	R Rural	R-3 Medium Density Residential	GI General Industrial
Lake	R-X Rural Executive	R-4 High Density Residential	LI Light Industrial
Parcels	R-1 Single Family Residential	R-6 Manufactured Home Park	R-BR Rural Business Reserve
Municipal Boundary	R-1X Single Family Executive	LB Limited Business	PSP Public Semi-Public
	R-2 Two Family Residential	GB General Business	PUD Planned Development
		NB Neighborhood Business	PUD Planned Unit Development

Updated Through Ordinance No. 03-21

CLICK ON MAP FOR PRINTABLE IMAGE



FOR MORE INFORMATION, CONTACT:

JON RAUSCH, CCIM, SIOR
Executive Director
+1 612 685 8288
jon.rausch@cushwake.com

BEN DREW
Senior Associate
+1 952 210 4637
ben.drew@cushwake.com

©2023 Cushman & Wakefield. All rights reserved. The material in this presentation has been prepared solely for information purposes, and is strictly confidential. Any disclosure, use, copying or circulation of this presentation (or the information contained within it) is strictly prohibited, unless you have obtained Cushman & Wakefield's prior written consent. The views expressed in this presentation are the views of the author and do not necessarily reflect the views of Cushman & Wakefield. Neither this presentation nor any part of it shall form the basis of, or be relied upon in connection with any offer, or act as an inducement to enter into any contract or commitment whatsoever. NO REPRESENTATION OR WARRANTY IS GIVEN, EXPRESS OR IMPLIED, AS TO THE ACCURACY OF THE INFORMATION CONTAINED WITHIN THIS PRESENTATION, AND CUSHMAN & WAKEFIELD IS UNDER NO OBLIGATION TO SUBSEQUENTLY CORRECT IT IN THE EVENT OF ERRORS.

