



Gall Real Estate
Services, LLC

www.GallRE.com

PO Box 1071

*For additional information
on this property please contact:*

Jennifer Hand
Principal Broker
jhand@gallre.com
503.363.6051 (ph)
503.588.3499 (fax)
503.559.9839 (cell)

Suite 2:
5,305 SF

Zoned: M

\$.58/SF/NNN

1305 Clark Mill Rd.
Sweet Home

For Lease



PROPERTY HIGHLIGHTS

- Two story warehouse space with lobby and one private office on the main floor
- One grade level door
- 3-phase, 240V power is available
- Zoning allows a variety of uses, including manufacturing, assembly and storage
- An additional 5,399 SF of adjacent space will be available in the near future
- Located at the East end of town and visible from Highway 20

This information has been secured from sources we believe to be reliable, but we make no representations or warranties, expressed or implied, as to the accuracy of the information. Reference to square footage or age are approximate.

1305 Clark Mill Rd. Sweet Home



First Floor Warehouse



View from Second Story



Reception Area

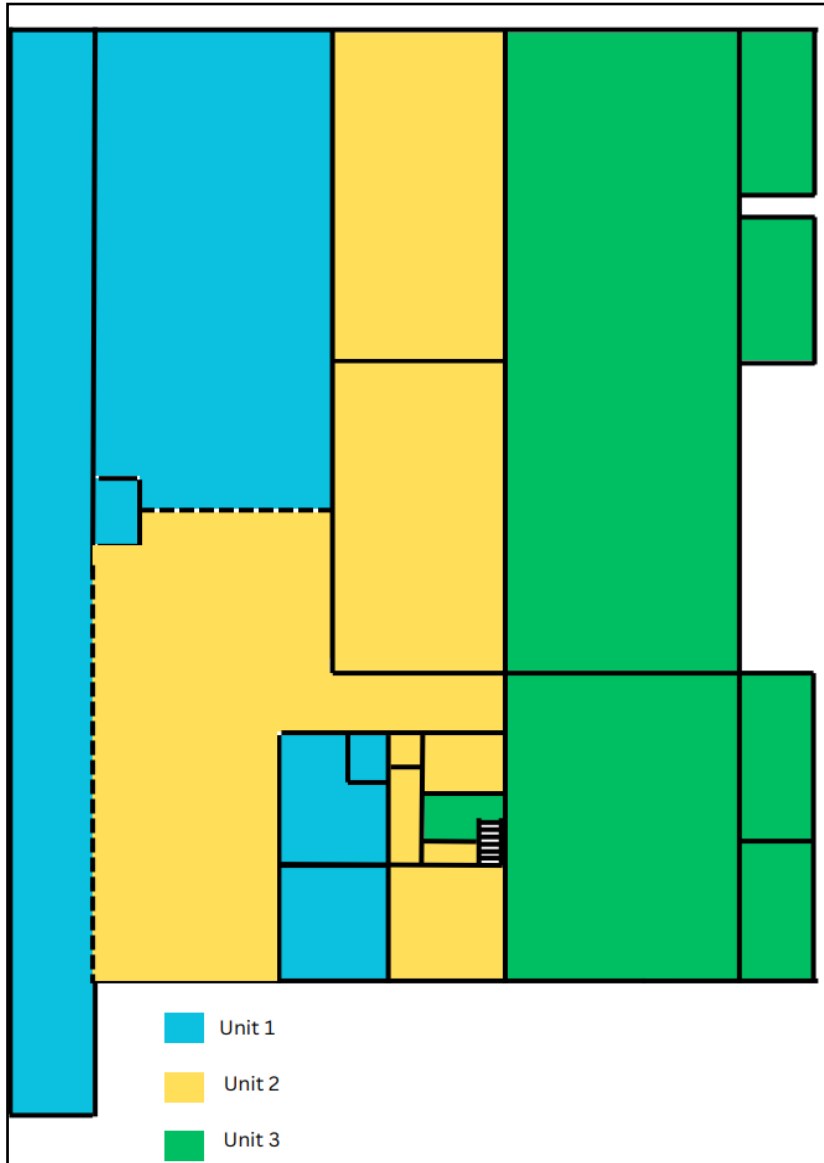


Second Story Warehouse

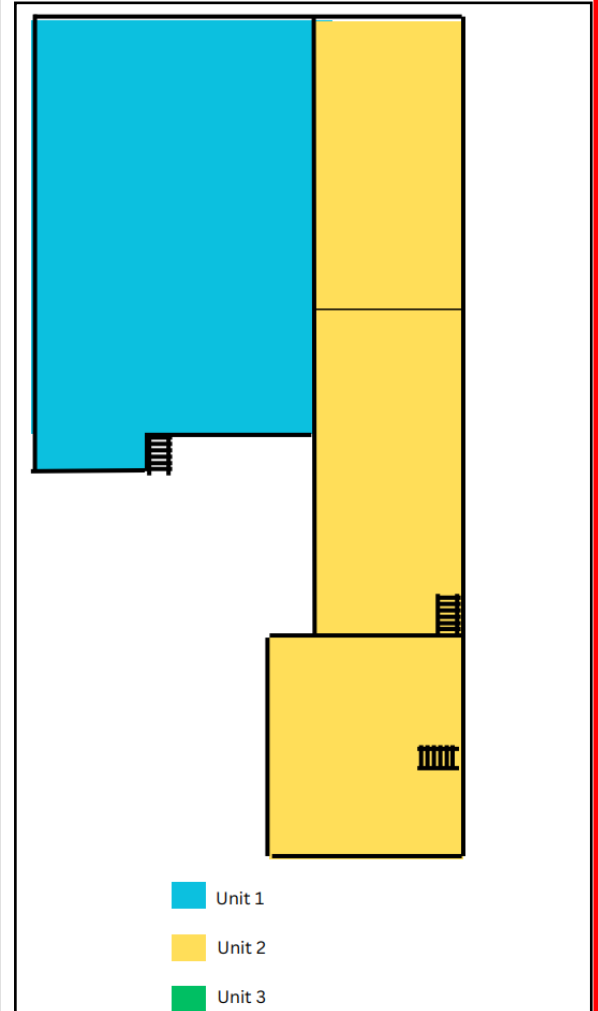
For additional information on this property please contact:

Jennifer Hand, Principal Broker
Gall Real Estate Services
jhand@gallre.com
503.363.6051 (ph)

1305 Clark Mill Rd. Sweet Home



First Floor



Second Floor

For additional information on this property please contact:

Jennifer Hand, Principal Broker
Gall Real Estate Services
jhand@gallre.com
503.363.6051 (ph)