

# Industrial ★ LEASE

LanCarte.com

5520 & 5524 MIDWAY RD HALTOM CITY, TX 76117



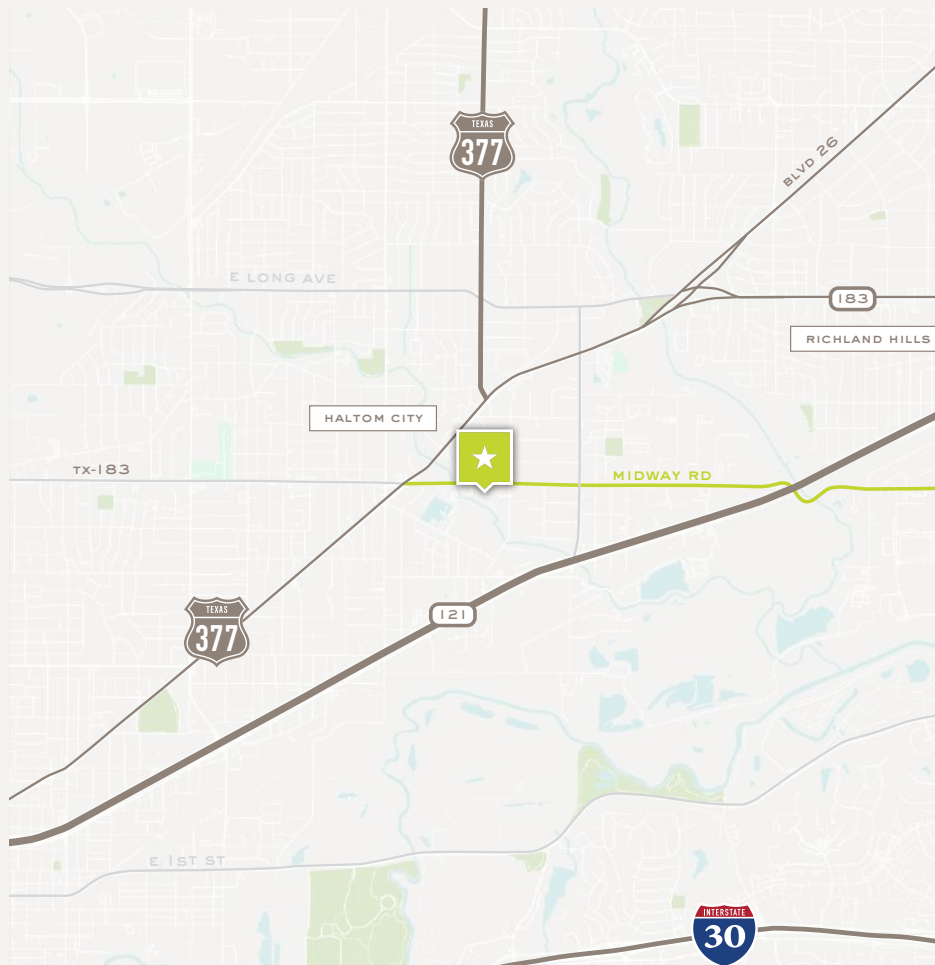
Riley Dow  
817-681-2022  
rdow@lancarte.com

Daniel Shelley  
512-461-5363  
dshelley@lancarte.com

# Industrial ★ LEASE

5520 & 5524 MIDWAY RD

LanCarte.com



## PROPERTY FEATURES

- 2,250-11,700 SF available
- 3,745 SF office
- Grade level loading
- Dock Doors
- 14' Clear
- 3 phase power: 240 Volt / 1200 Amp
- Warehouse Heaters

## LEASE RATE & STRUCTURE

## CONTACT BROKER

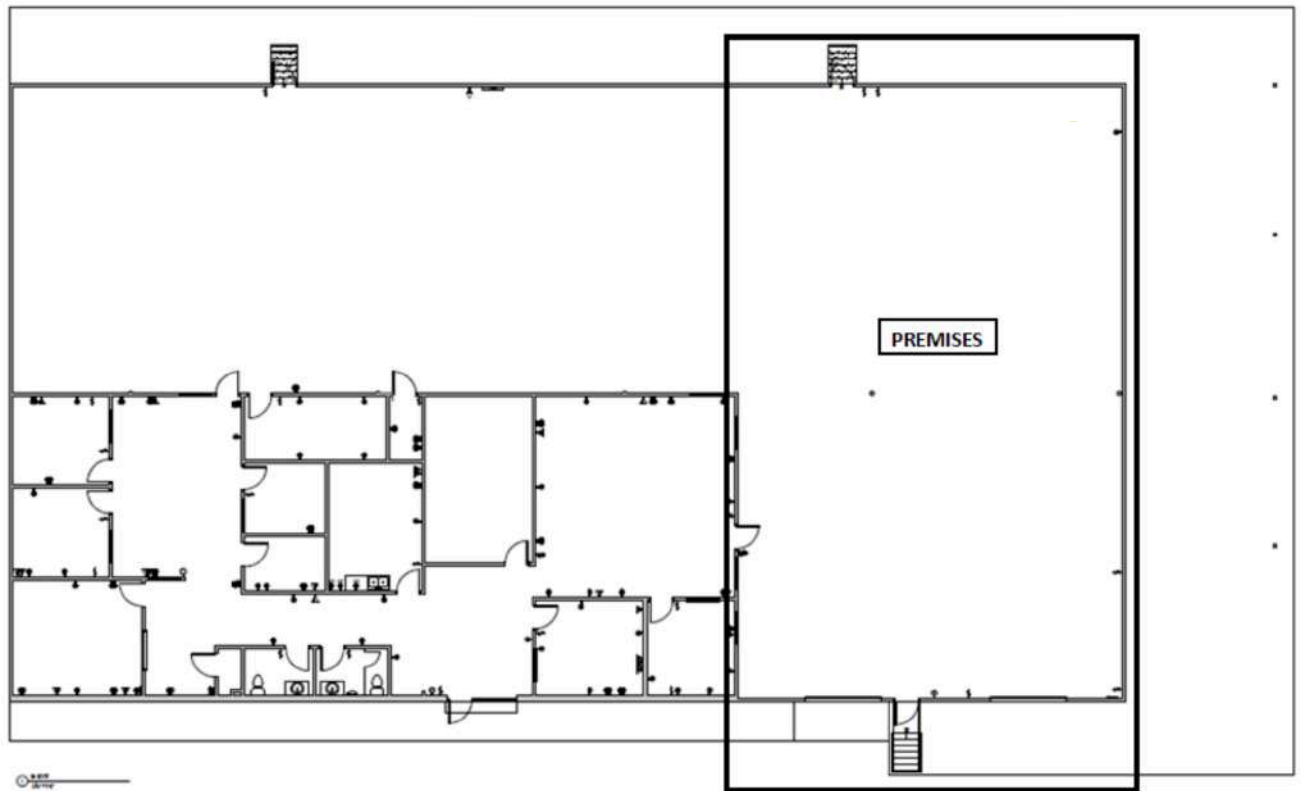
## LOCATION OVERVIEW

Located at 5520 and 5524 Midway Rd in Haltom City, this industrial property offers excellent access to NE Loop 820, I-35W, and TX-121, ensuring quick connectivity throughout the DFW metroplex. The site is strategically positioned near the Fort Worth Stockyards, Meacham International Airport, and major distribution corridors. Its central location within Tarrant County makes it ideal for businesses seeking efficient transportation routes and proximity to key regional markets.

**Industrial** ★ LEASE  
5520 & 5524 MIDWAY RD

LanCarte.com

FLOOR PLAN

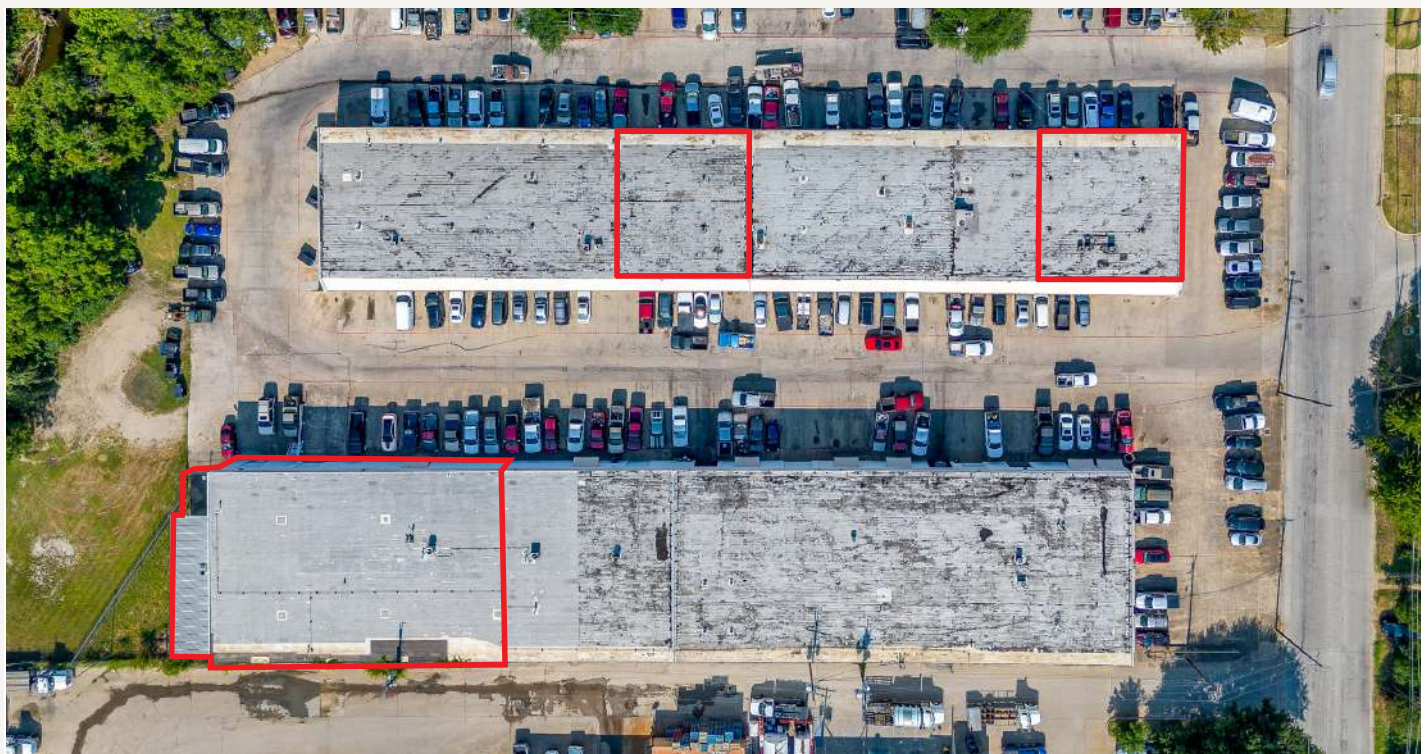
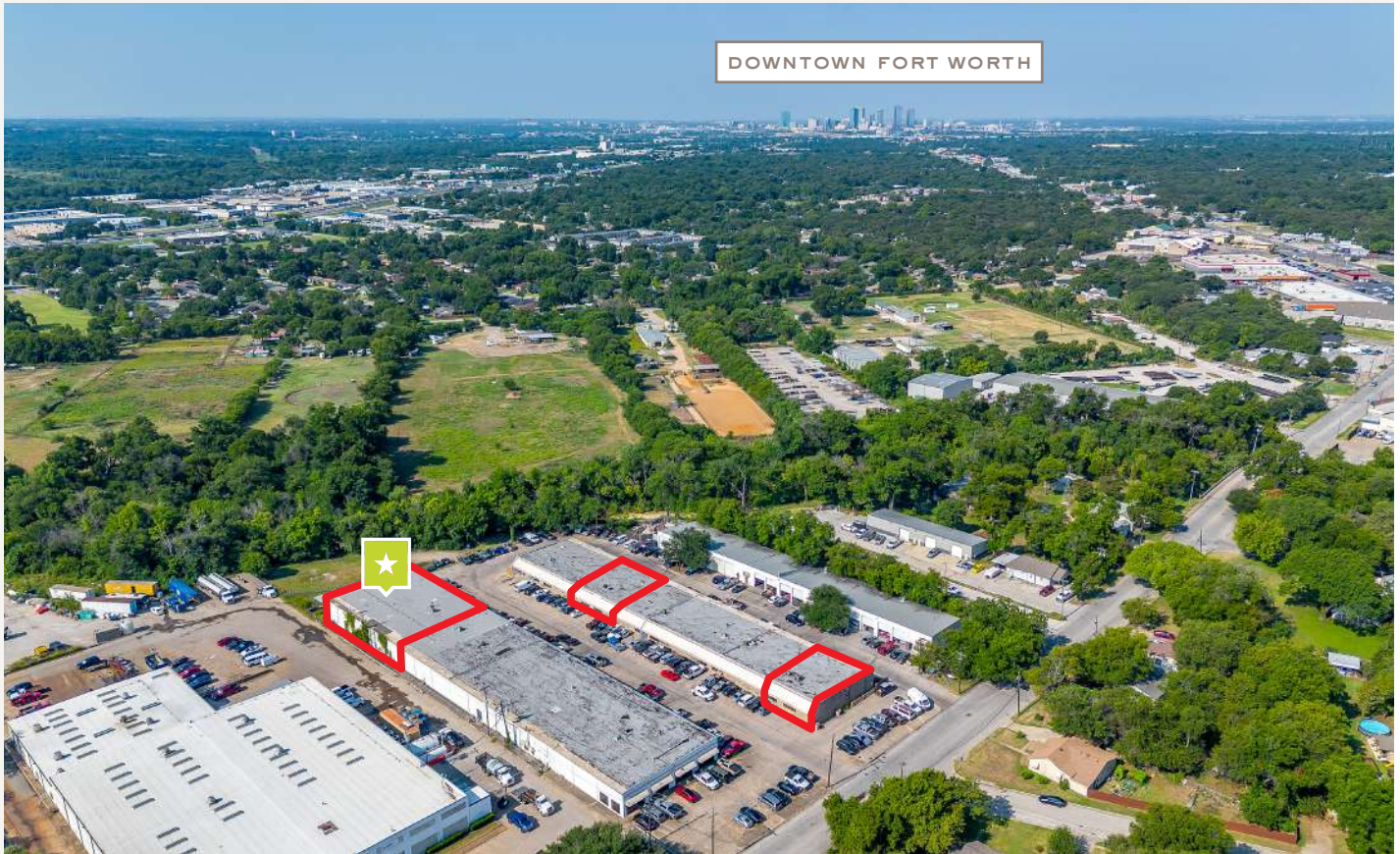


SUITE 5532 A: 11,700 SF

**Industrial** ★ LEASE  
5520 & 5524 MIDWAY RD

LanCarte.com

AERIAL PHOTOS



**Industrial** ★ LEASE  
5520 & 5524 MIDWAY RD

LanCarte.com

EXTERIOR PHOTOS



**Industrial** ★ LEASE  
5520 & 5524 MIDWAY RD

LanCarte.com

INTERIOR PHOTOS





LANCARTE  
COMMERCIAL  
BROKERAGE ★ PROPERTY MANAGEMENT

*Relentlessly Pursuing What Matters*

Riley Dow  
817-681-2022 | [rdow@lancarte.com](mailto:rdow@lancarte.com)

Daniel Shelley  
512-461-5363 | [dshelley@lancarte.com](mailto:dshelley@lancarte.com)

The information provided herein was obtained from sources believed to be reliable. However, Lancarte Commercial makes no guarantee, warranties or representations as to the completeness or accuracy thereof. The possession of this property is subject to errors, omissions, change of price or conditions, prior to sale or lease, or withdrawal without notice. Copyright 2026 Lancarte Commercial Real Estate, LLC.