

The Colliers logo features the word "Colliers" in white serif font on a dark blue background, with a horizontal bar below it divided into red, yellow, and blue segments.The dream logo consists of the word "dream" in a bold, lowercase, orange sans-serif font, followed by a small blue and white cloud icon.

For Lease

**1361**

Huntingwood Drive

TORONTO, ON

Strategically Located Industrial Units  
with Excellent Access

**Kate Woolsey**

Sales Representative

+1 647 268 8120

[kate.woolsey@colliers.com](mailto:kate.woolsey@colliers.com)

**Luke Hincenbergs\***

Associate Vice President

+1 647 400 7569

[luke.hincenbergs@colliers.com](mailto:luke.hincenbergs@colliers.com)



# Property Description

1361 Huntingwood Drive is a functional industrial building situated in the heart of Scarborough's established industrial area. The property offers excellent connectivity via major highways and transit routes, providing seamless access for employees, clients, and logistics. With generous parking and close proximity to amenities, it's ideal for a wide range of industrial users.

Zoned E0.7\*180, the site permits a variety of employment and light industrial uses, offering flexibility for different business types.

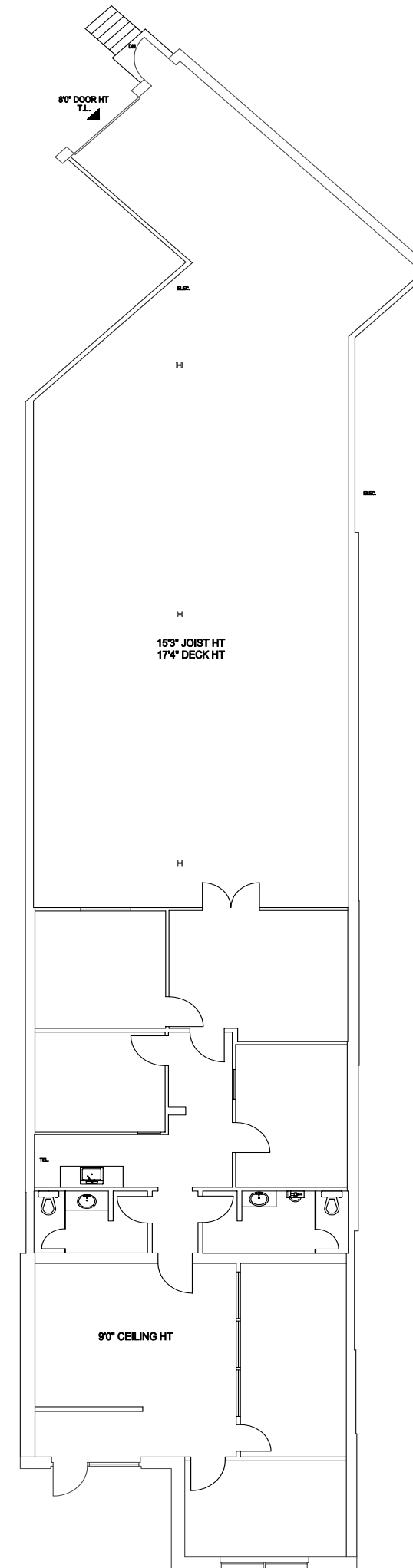
The site has direct access from Huntingwood Drive, with efficient truck circulation throughout. Public transit is easily accessible, with TTC bus stops within walking distance and connections to Line 3 Scarborough and Line 2 Bloor-Danforth. On-site parking is ample and convenient for both staff and visitors, and the property benefits from immediate access to key arterial roads such as Midland Avenue, Brimley Road, and McCowan Road.



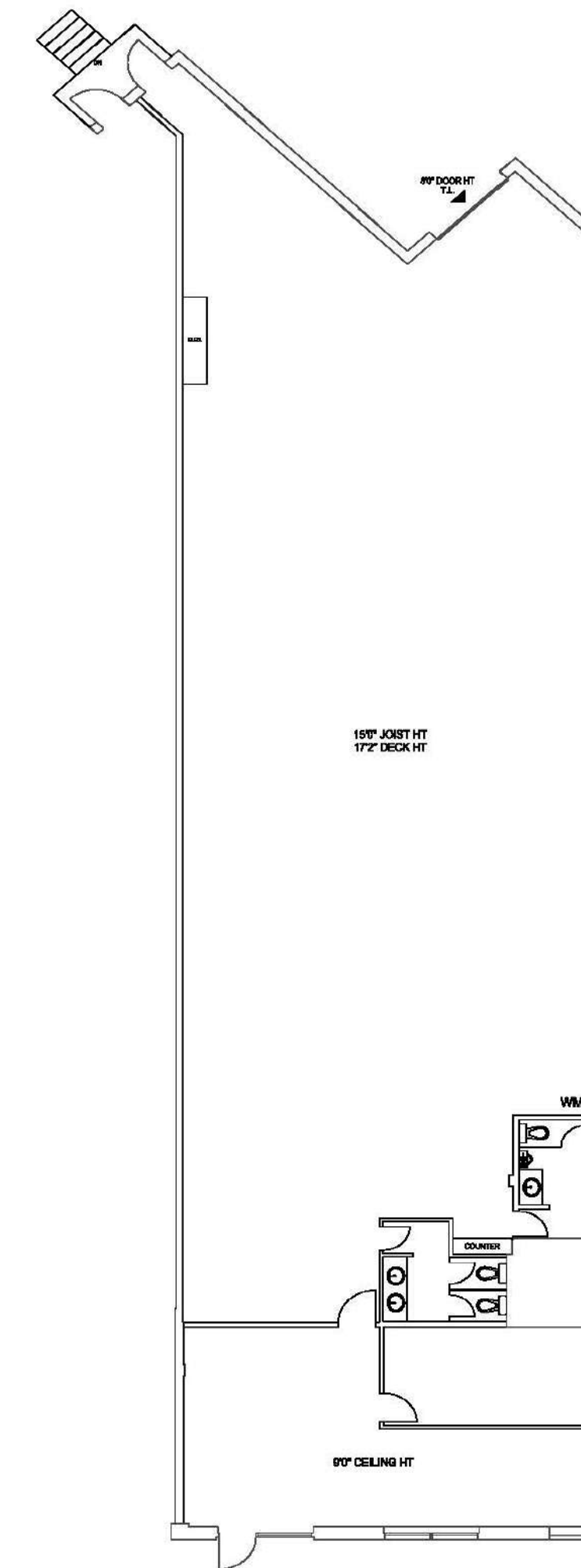
Unit	Total Size	Office Size	Asking Rate (PSF)	Additional Rate (PSF)	Clear Height	Shipping	Availability
5	3,868 SF	40%	\$18.75			1 Truck Level Door	Immediate
				<b>\$7.14</b>	<b>16'</b>		
9	4,421 SF	10%	\$18.75			1 Truck Level Door	Immediate

# Floor Plans

Unit 5 - 3,868 SF

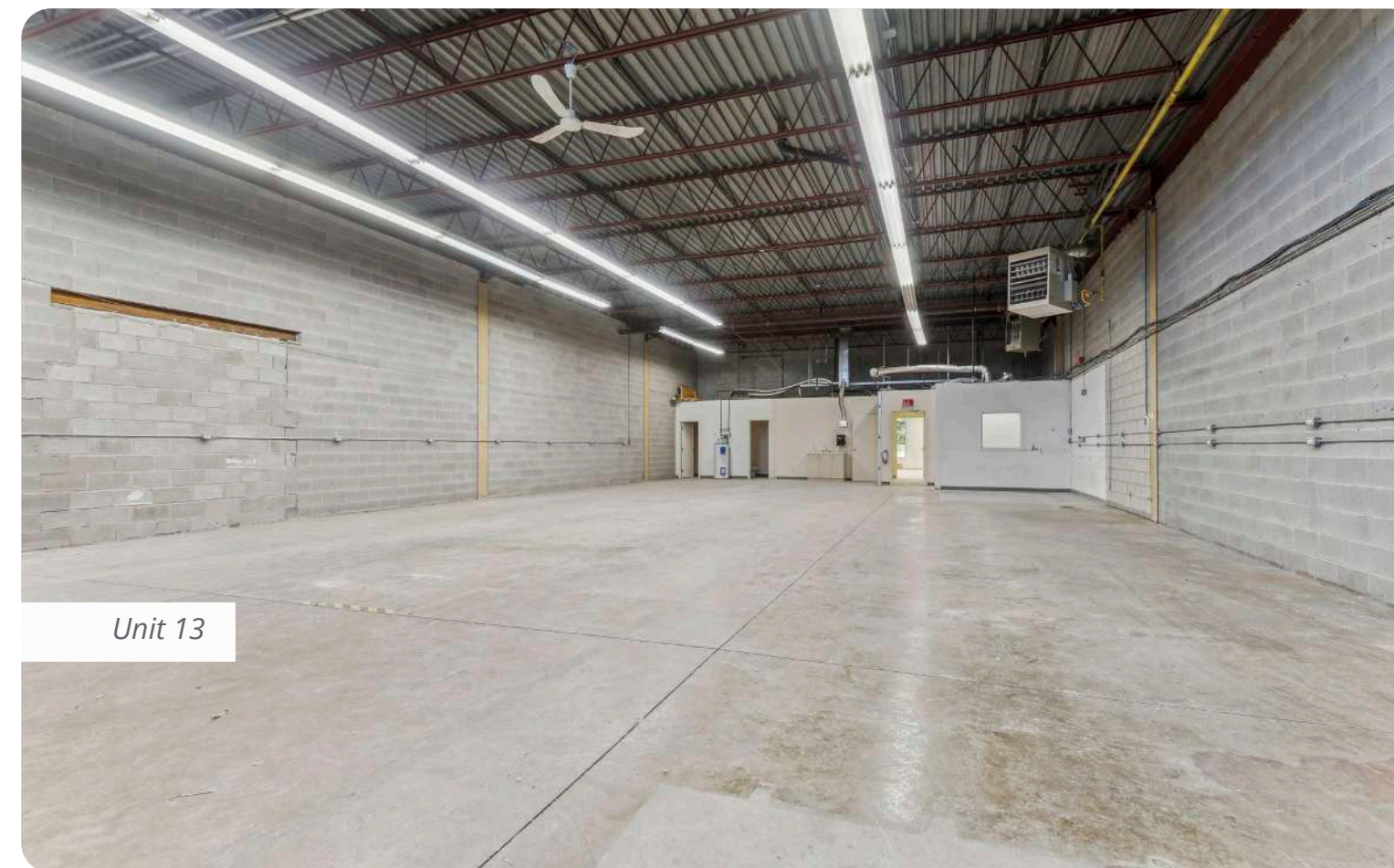
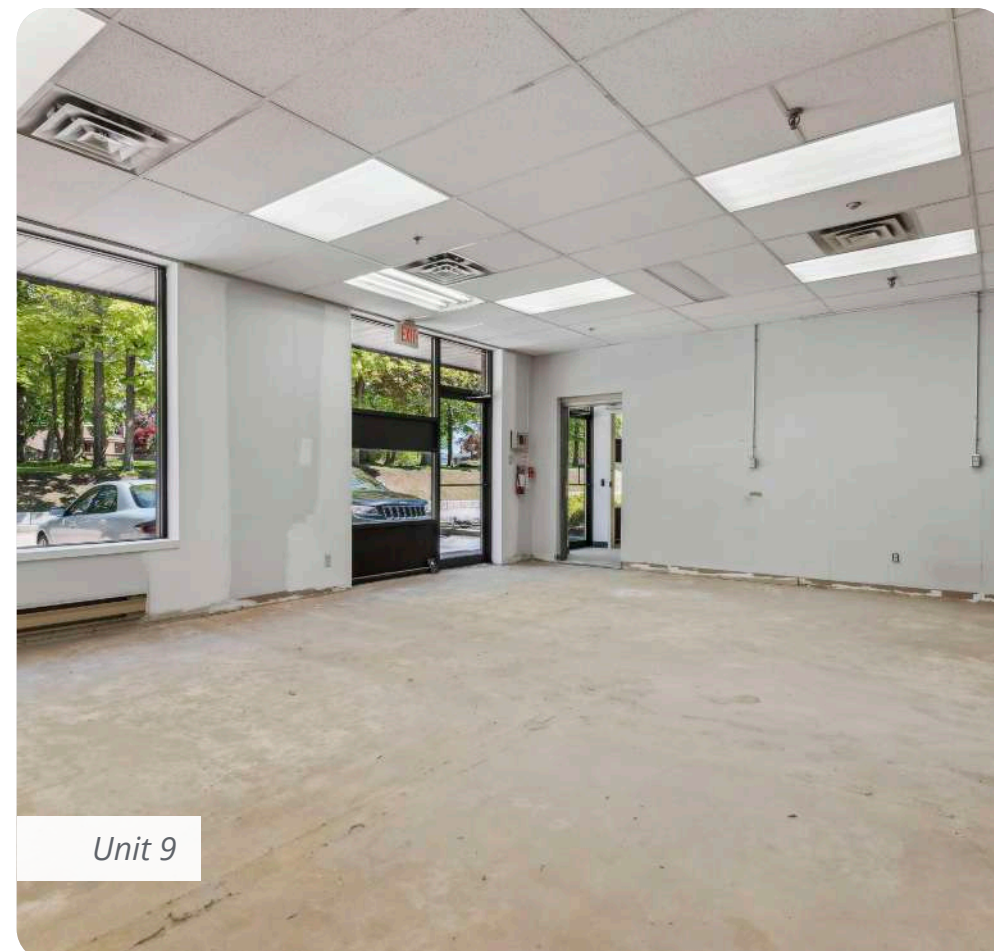
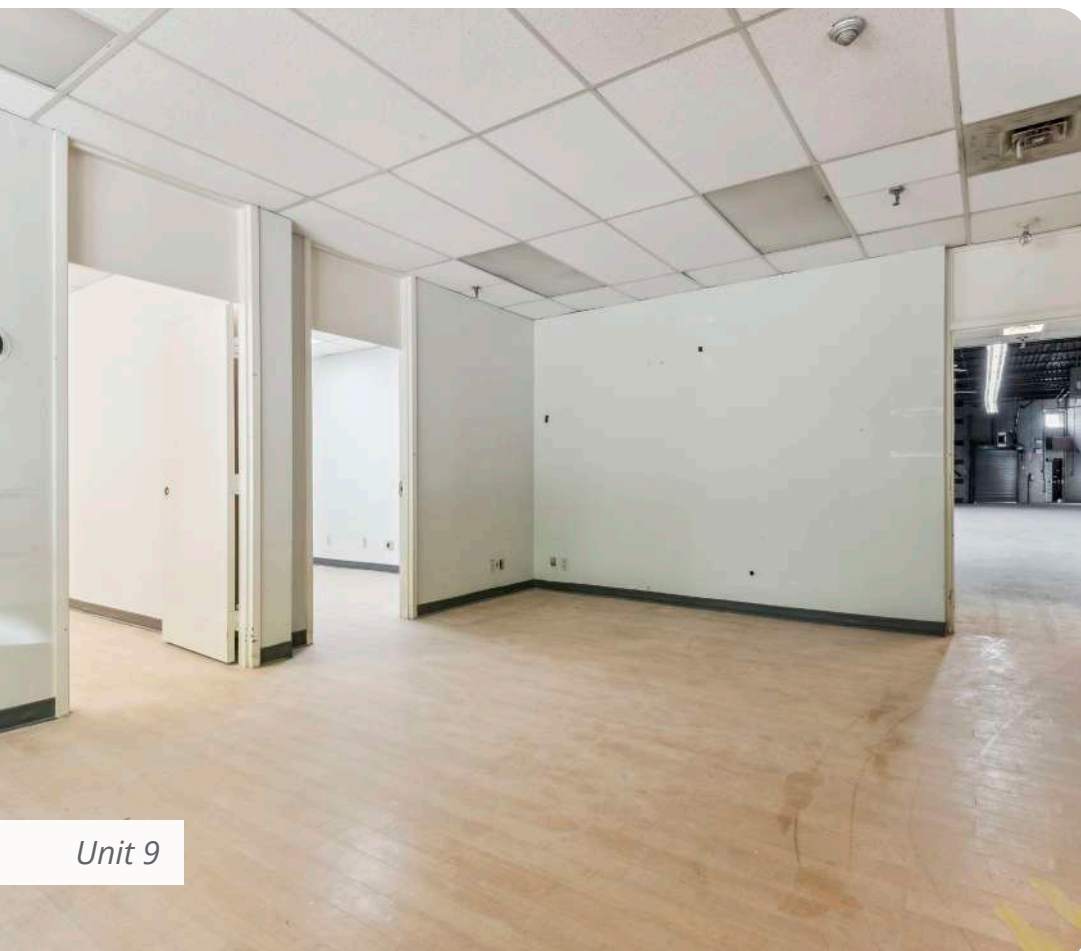
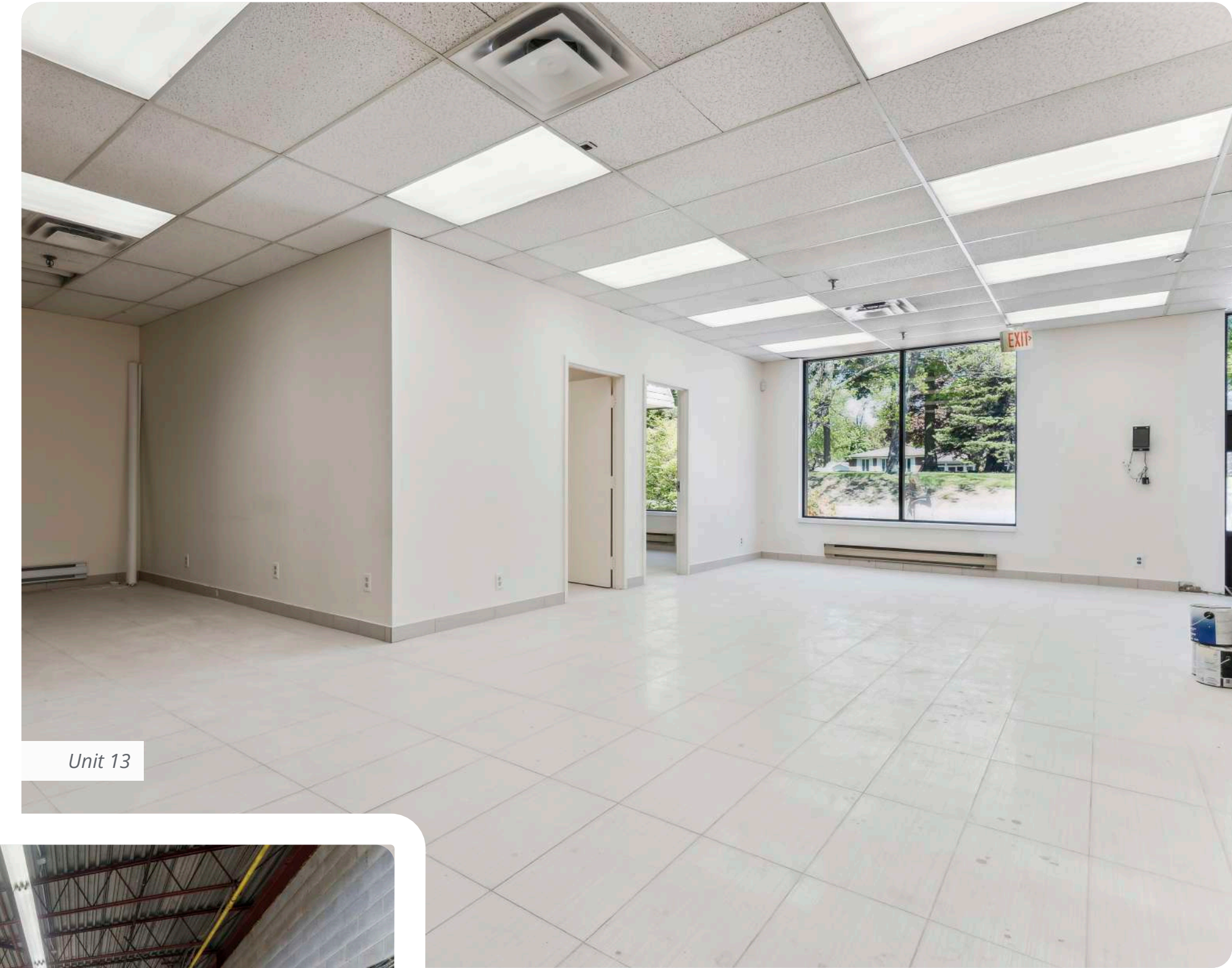
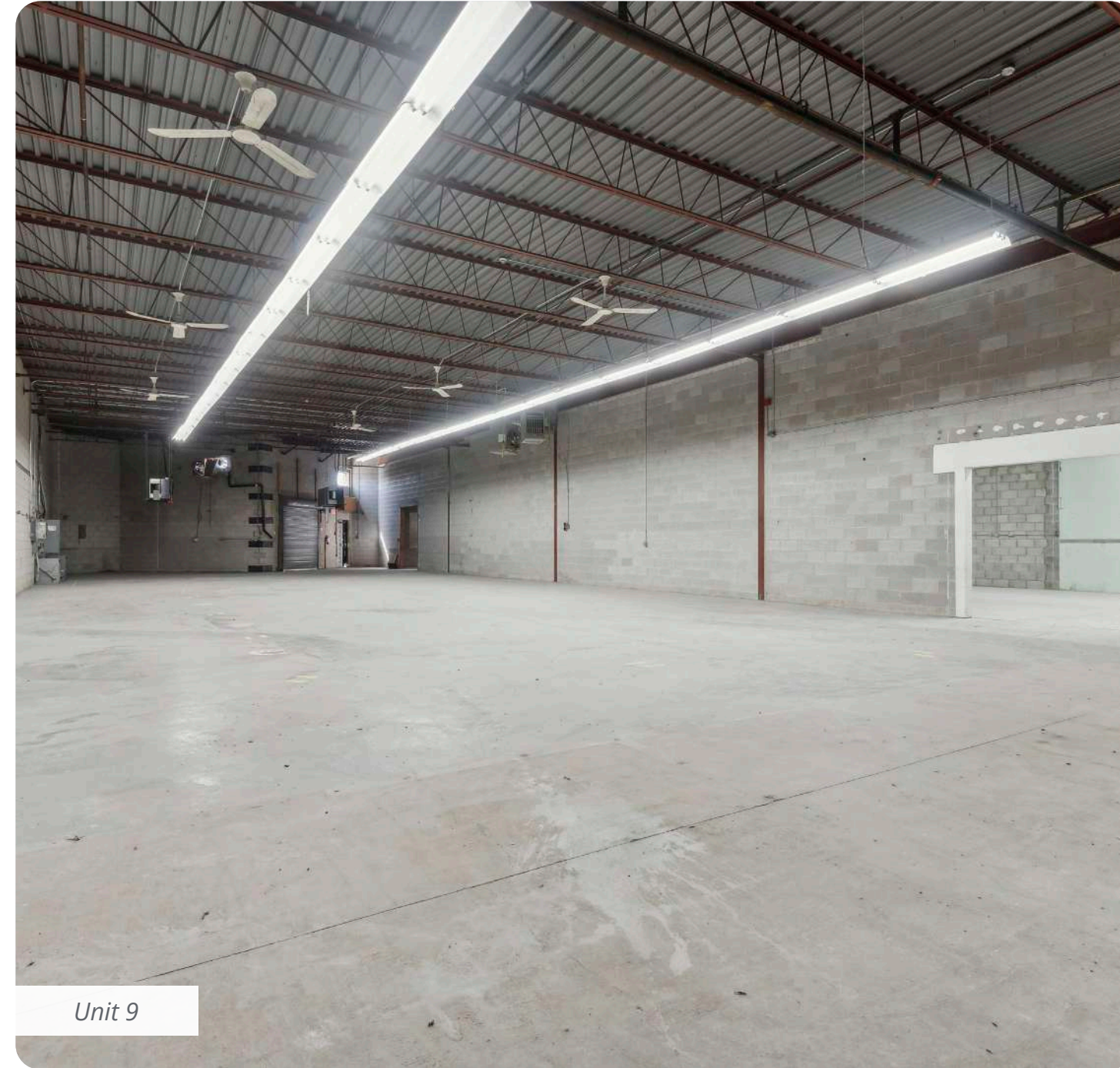


Unit 9 - 4,421 SF



# Gallery

1361 Huntingwood Drive, Toronto, ON

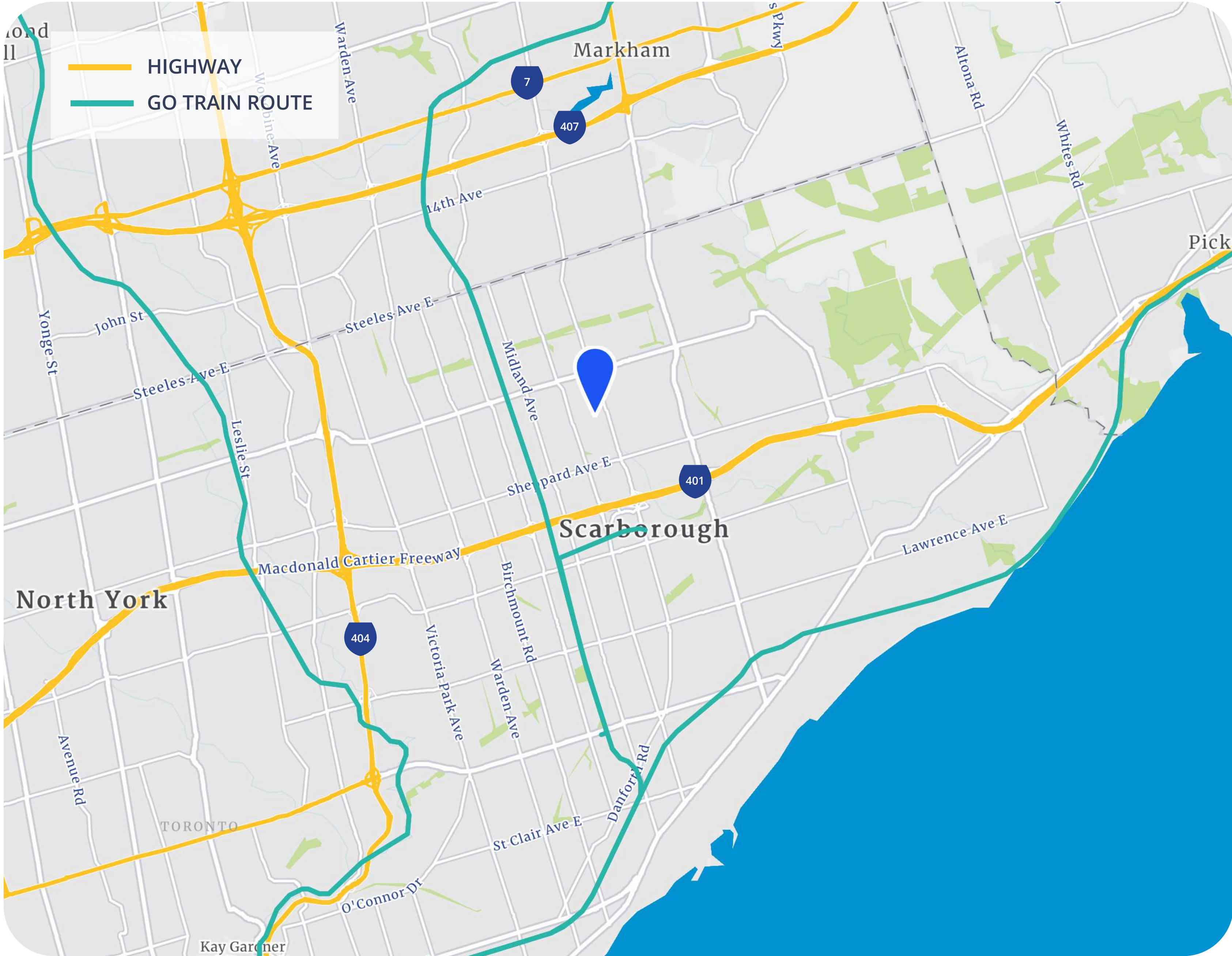


# Location Overview

Located in northeast Toronto, 1361 Huntingwood Drive is surrounded by a strong mix of industrial and commercial users. The area is well-served by TTC bus routes, and is just minutes from Highways 401, 404, and 407. The site offers quick access to key Toronto markets and beyond, while being close to a deep labour pool, restaurants, and service amenities.

## Site Access

- Highway 6  
6 minutes
- Scarborough Town Centre  
7 minutes
- Highway 404 / DVP  
10 minutes
- Highway 407  
12 minutes
- Markham  
15 minutes
- Pickering  
15 minutes
- Downtown Toronto  
25 minutes
- Toronto Pearson International Airport  
30 minutes





# 1361 Huntingwood Drive

TORONTO, ON

## Kate Woolsey

Sales Representative

+1 647 268 8120

kate.woolsey@colliers.com

## collierscanada.com

This document has been prepared by Colliers for advertising and general information only. Colliers makes no guarantees, representations or warranties of any kind, expressed or implied, regarding the information including, but not limited to, warranties of content, accuracy and reliability. Any interested party should undertake their own inquiries as to the accuracy of the information. Colliers excludes unequivocally all inferred or implied terms, conditions and warranties arising out of this document and excludes all liability for loss and damages arising there from. This publication is the copyrighted property of Colliers and/or its licensor(s). Copyright © 2026. All rights reserved. This communication is not intended to cause or induce breach of an existing listing agreement. **\*Sales Representative**

## Luke Hincenbergs\*

Associate Vice President

+1 647 400 7569

luke.hincenbergs@colliers.com

## Dream Industrial

Dream Industrial is an innovative and customer-focused owner, operator, and developer of high-quality industrial properties. Dream Industrial invests in and manages over 71 million square feet of industrial assets in Canada, Europe, and the United States for over 1,500 occupiers operating across a diversity of sectors. The organization has a track record of delivering best-in-class modern industrial properties globally, with a development pipeline that includes approximately 6 million square feet of active projects and an additional 7 million square feet available for expansion or built-to-suit purposes.

Dream Industrial is part of the Dream Group of Companies and is managed by Dream Unlimited Corp. (TSX:DRM), a leading global real estate asset manager and institutional investor with \$27 billion in assets under management. Dream Industrial is comprised of Dream Industrial REIT (TSX: DIR.UN) as well as several private vehicles

