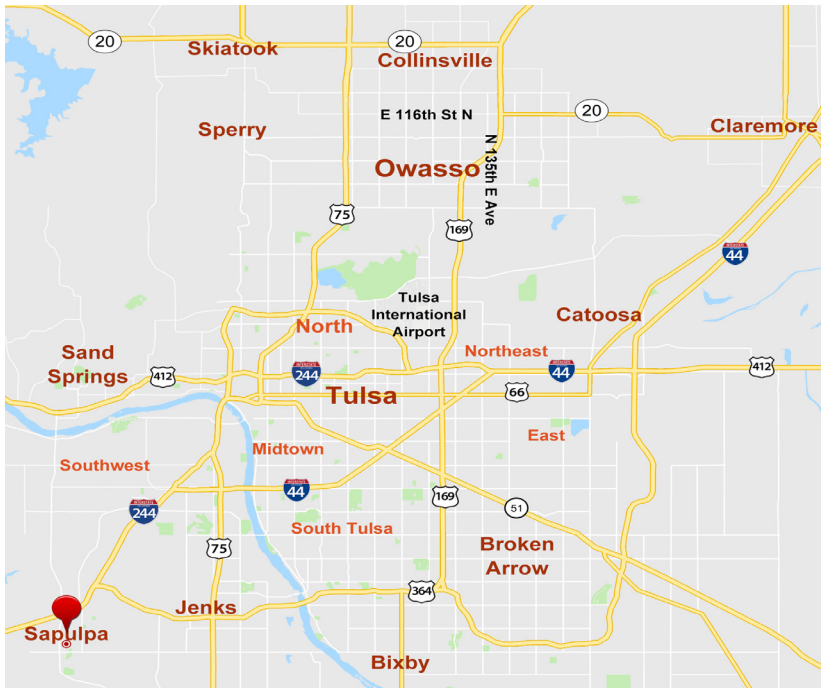


# Sapulpa Executive Suites | For Lease

5 N Park St | Sapulpa, OK 74066

**WIGGIN**  
PROPERTIES, LLC



## Property Features

- Furnished or Unfurnished
- Located in historic downtown Sapulpa Westfall Building
- Historic character with modern amenities
- Completely Renovated
- Amazing Location - close to everything!
- On Route 66
- Huge windows overlooking Main Street
- Multiple Bathrooms
- Shared Conference Room

## Available Space

11 Private Offices

## Pricing

Contact Advisor for Pricing

## Paul Bush

Advisor

918.287.7825

[pbush@wigginprop.com](mailto:pbush@wigginprop.com)

	2024	1 Mile	3 Miles	5 Miles
Population		5,960	21,281	32,989
Avg HH Income		\$70,294	\$91,445	\$102,708
Households		2,309	8,377	12,811

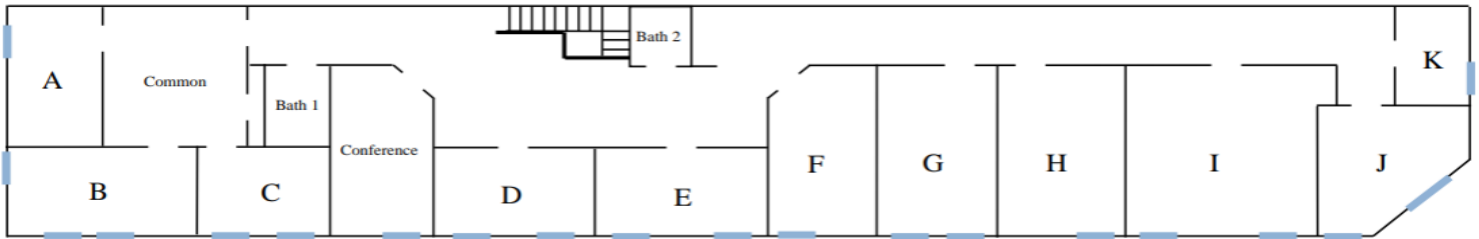
This material is provided for information purposes only. It is from sources believed to be reliable. However, Wiggin Properties makes no warranties or representations, expressed or implied, as to the accuracy or sufficiency of the information. It is presented subject to errors, omissions, changes or withdrawal without notice. Square footage is provided by the local County Assessor or the Owner. Photos and graphics with copyrights by Costar, Google, Wiggin Properties and independent contractors are used with permission.



# Sapulpa Executive Suites | For Lease

5 N Park St | Sapulpa, OK 74066

**WIGGIN**  
PROPERTIES, LLC



Measurements are E-W x N-S

- ◇ Room A: 11'-6" x 10'-0"
- ◇ Room B: 10'-4" x 18'-3"
- ◇ Room C: 10'-3" x 13'-0"
- ◇ Common: 11'-8" x 12'-6"
- ◇ Bath 1: 6'-3" x 6'-2"
- ◇ Conference: 16'-11" x 10'-0"
- ◇ Room D: 10'-4" x 15'-11"
- ◇ Room E: 10'-3" x 15'-3"
- ◇ Bath 2: 6'-5" x 5'-1"
- ◇ Room F: 17'-2" x 10'-0"
- ◇ Room G: 17'-1" x 10'-0"
- ◇ Room H: 17'-2" x 10'-0"
- ◇ Room I: 17'-1" x 15'-3"
- ◇ Room J: 10'-5" x 15'-9"
- ◇ Room K: 11'-9" x 11'-5"

## Paul Bush

Advisor

918.287.7825

[pbush@wiggproperties.com](mailto:pbush@wiggproperties.com)