

Dunn Village Shopping Center

6765 Dunn Ave, Jacksonville, FL 32219 | Duval County

For Leasing Info:

Kristen Nimnicht

904-448-8007 x 102

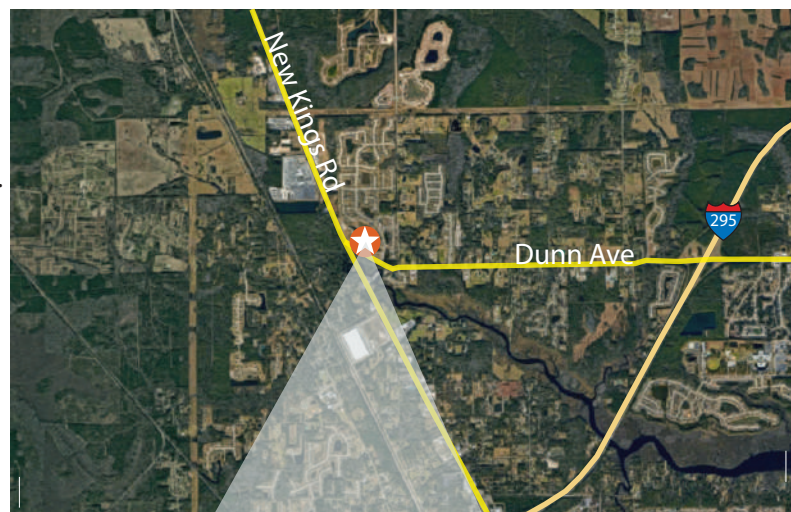
kristen.nimnicht@latpurser.com



Unique Attributes

- Dunn Village is located at the intersection of Dunn Avenue and New Kings Road (US 1).
- Anchored by a strong performing Rowe's IGA Supermarket.
- Highly visible from road and no other retail centers in the community.
- Outparcels available for ground lease or sale.
- Close to I-295, new Amazon center, new Baptist medical campus, new construction residential communities, FSC North campus and 3 major auctions with 2,000 visitors weekly.

Area Map



Size of Center	72,728 SF
Daily Traffic Count	40,500 Cars
Parking	377 (5.18/1,000 SF)

2023 Demographics

	1 MILE	3 MILES	5 MILES
2023 Estimated Total Population	2,806	18,368	51,404
Est. Annual Population Growth 2023-2028	0.4%	1.2%	1.7%
Average Household Income	\$106,241	\$74,035	\$72,189
Median Age	34.4	37.6	38.9





Last Updated:
02/26/2024



SUBWAY B-330 1,800 SF	Family Dollar C-318 8,000 SF	BARBERSHOP D-316 1,200 SF	LIQUORS B-322 1,200 SF	NAILS B-323 1,200 SF	HOT WOK B-324 1,200 SF	D'Neemelle B-325 1,200 SF	ARBLE BAKING B-326-327 2,400 SF	Flourish Express B-328 1,200 SF	1,200 SF B-329	petsense F-301 6,393 SF	3,607 SF F-301A	JAMAICAN RESTAURANT G-204 1,200 SF	HAIR G-203 1,200 SF	Celestias G-201 2,400 SF
------------------------------------	---	-------------------------------------	----------------------------------	--------------------------------	----------------------------------	-------------------------------------	---	---	-----------------------	--------------------------------------	------------------------	--	-------------------------------	------------------------------------

D-306
34,928 SF



Key

- Dumpster
- Available
- Not in Center (NIC)
- Ingress/Egress
- Traffic Light
- Pylon