



RESTAURANT LEASE LOCATION

711 VANDERCOOK WAY
STE 102
LONGVIEW WA 98632

\$ **3,000**

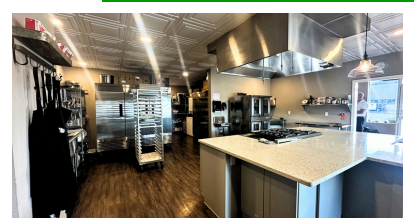
PER
MONTH
PLUS NNN

SF
+/- **1,590**

SPACE
SIZE

ABOUT THE PROPERTY

Position your business for success with this prime restaurant space at Vandercook Plaza, strategically located at one of the city's busiest intersections with over 40,000 VPD. This highly visible corner suite offers 1,590 SF of mostly open, functional space designed for efficiency and customer flow. Features include a centrally located kitchen, private office, ample storage, a private restroom, and a well-proportioned front area ideal for dine-in, takeout, or retail. Expansive storefront windows fill the space with natural light, enhancing the welcoming atmosphere. Enjoy excellent signage opportunities and ample parking. The asking lease rate is \$3,000 per month plus triple nets. Contact us today to learn more or arrange a private tour.



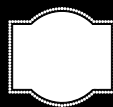
PROPERTY DETAIL



CLOSE TO
INTERSTATE 5



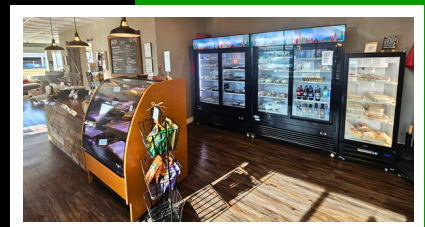
40,000 VPD



GREAT
VISIBILITY



AMPLE
PARKING



woodfordcre.com



chris@woodfordcre.com

GET IN TOUCH

Chris Roewe
Owner/Broker


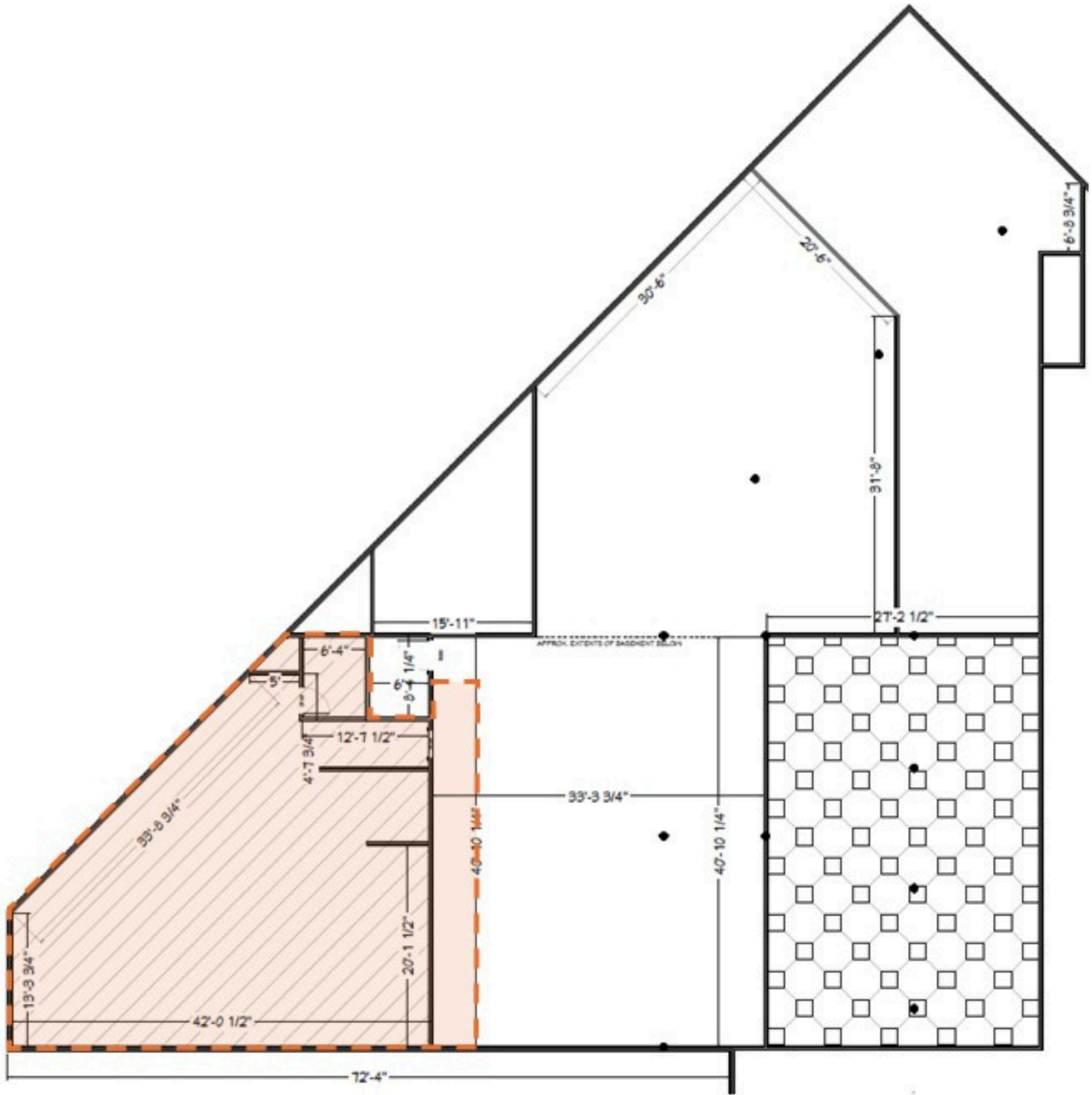
Lindsay Johnson
Licensed Assistant



(360) 501-5500



lindsay@woodfordcre.com



The information contained herein has been obtained from sources we understand to be reliable. Whilst we do not doubt its accuracy it has not been verified & we make no guarantees, warranty or representations about it. Any projections, opinions, assumptions or estimates used are for example only. You & your advisors should conduct a careful independent investigation of the property to determine the property's satisfaction to your needs. © Woodford Commercial Real Estate.

RESTAURANT FOR LEASE



The information contained herein has been obtained from sources we understand to be reliable. Whilst we do not doubt its accuracy it has not been verified & we make no guarantees, warranty or representations about it. Any projections, opinions, assumptions or estimates used are for example only. You & your advisors should conduct a careful independent investigation of the property to determine the property's satisfaction to your needs. © Woodford Commercial Real Estate.

