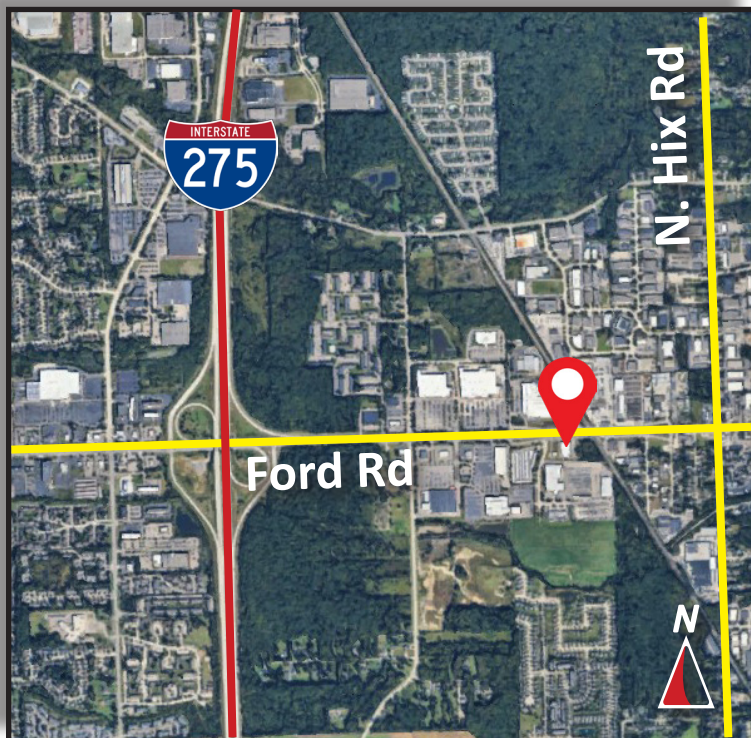


Burger

& COMPANY

FOR LEASE

39127 Ford Road
Westland, Michigan
20,222 Square Feet



- 20,222 square feet of industrial space available for lease
- Ford Road frontage!
- Great manufacturing or automotive repair building
- Multiple cranes ranging from 5-Ton / 10-Ton / 15-Ton
- Two (2) grade level doors 12'x14' and 12'x16'
- Property sits on a 3.61 acre lot which allows room for ample parking
- Zoned I-2 General Industrial
- Quick access to I-275
- 3 Phase/220Volt power
- Gross lease includes the real estate taxes, building insurance, lawn care and snow removal
- Lease rate: \$10.00 per square foot gross / \$16,851 per month

Burger & Company

Nicolo Burger, SIOR, CCIM
Vice President
Cell: 810.224.8103
nic@burgercollc.com

Jack Bushart
Senior Associate
Cell: 734.890.4609
jack@burgercollc.com

248.536.2888
www.burgercollc.com
38345 W. 10 Mile Road, Suite 100
Farmington Hills, MI 48335

Information contained herein is deemed to be reliable but is not guaranteed and may be withdrawn at any time.

FOR LEASE

39127 Ford Road
Westland, MI



BUILDING SPECIFICATIONS

Location	Ford Rd West of Hix	Square Feet Available	20,222
County	Wayne	Office Square Feet	1,500 +/-
Zoning	I-2 General Industrial	Warehouse Square Feet	18,722
Lot Size	3.61 Acres	Year Built	1968

Construction	Brick/Block	Roof	Flat
Clear Height	15'6" - 21'	Grade Level Doors	12'x14' & 12'x16'
Cranes	Multiple 5-Ton - 15-ton	Dock Doors	None
Lighting	LED/Fluorescent	Power	3 Phase/220 V
Heating	Radiant & Gas Forced Air	Sprinklers	No
Warehouse A/C	No	Railroad	No
Buss Duct	Yes	Signage	Yes
Parking	Ample	Restrooms	Yes

Description

- 20,222 square feet of industrial space available for lease
- Ford Road frontage!
- Great manufacturing or automotive repair building
- Multiple cranes ranging from 5-Ton / 10-Ton / 15-Ton
- Two (2) grade level doors 12'x14' and 12'x16'
- Property sits on a 3.61 acre lot which allows room for ample parking
- Zoned I-2 General Industrial
- Quick access to I-275
- 3 Phase/220Volt power
- Gross lease includes the real estate taxes, building insurance, lawn care and snow removal

Terms	3-5 Years
Lease Rate	\$10.00 PSF
Monthly	\$16,851
Lease Type	Gross
Availability	60 - 90 Days

Burger

& COMPANY

Nicolo Burger, SIOR, CCIM
Vice President
Cell: 810.224.8103
nic@burgercollc.com

Jack Bushart
Senior Associate
Cell: 734.890.4609
jack@burgercollc.com

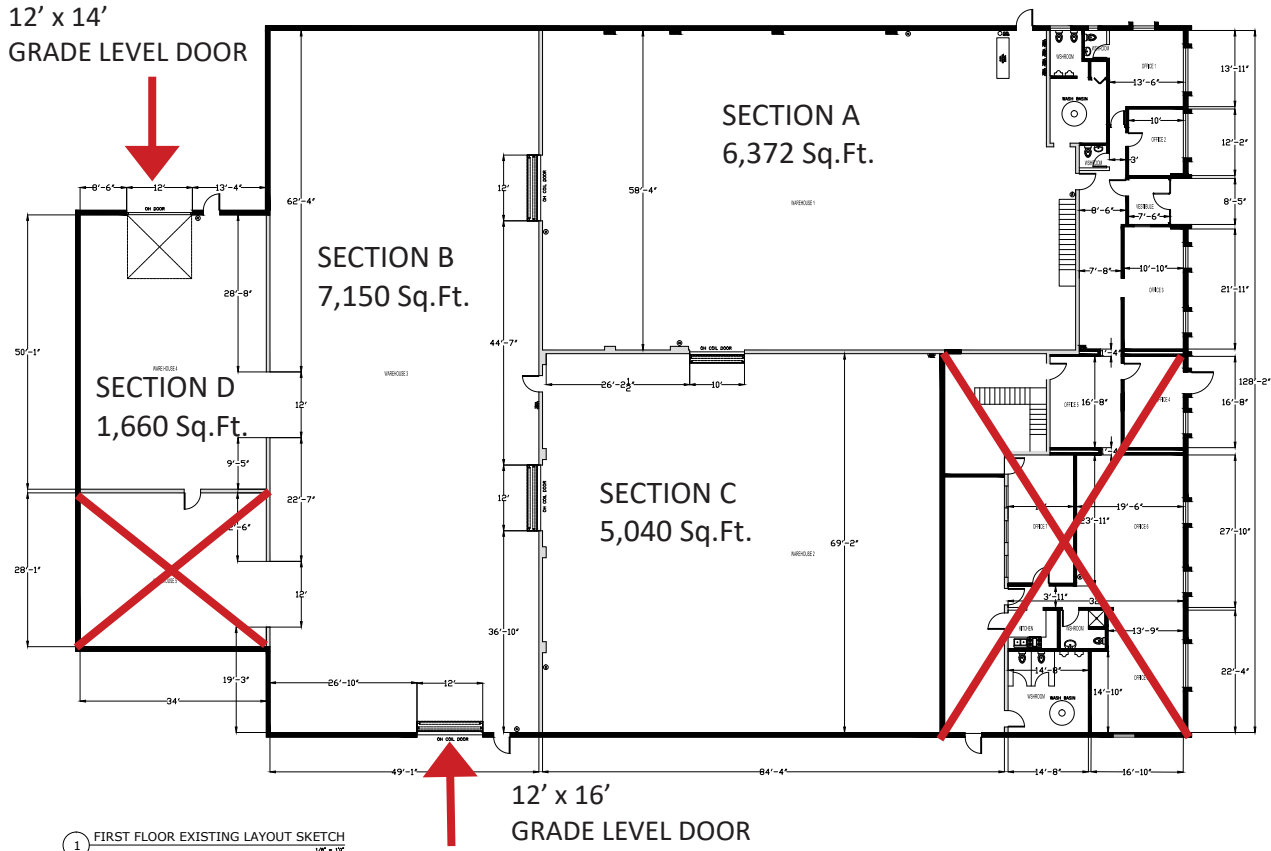
248.536.2888
www.burgercollc.com
38345 W. 10 Mile Road, Suite 100
Farmington Hills, MI 48335

Information contained herein is deemed to be reliable but is not guaranteed and may be withdrawn at any time.

FOR LEASE

39127 Ford Road
Westland, MI

FLOOR PLAN



General Notes

NOT FOR CONSTRUCTION
ALL EXISTING CONDITIONS AND
DIMENSIONS
SUBJECT TO FURTHER VERIFICATION
IN FIELD BY ANY FUTURE
ARCHITECT, ENGINEER AND/OR
CONTRACTOR

1 SKETCH

File Name and Address
YAHAMA DESIGN & CONSULTING
DEARBORN HEIGHTS, MI

Project Name and Address
RSA TOOL & ENGINEERING
39127 FORD RD, WESTLAND MI 48085

Project
1/10/2023

Issue
A1.0

Burger

& COMPANY

Nicolo Burger, SIOR, CCIM
Vice President
Cell: 810.224.8103
nic@burgercollc.com

Jack Bushart
Senior Associate
Cell: 734.890.4609
jack@burgercollc.com

248.536.2888
www.burgercollc.com
38345 W. 10 Mile Road, Suite 100
Farmington Hills, MI 48335

Information contained herein is deemed to be reliable but is
not guaranteed and may be withdrawn at any time.

FOR LEASE

39127 Ford Road
Westland, MI

SECTION A



SECTION B



SECTION C



SECTION D



Burger

& COMPANY

Nicolo Burger, SIOR, CCIM
Vice President
Cell: 810.224.8103
nic@burgercollc.com

Jack Bushart
Senior Associate
Cell: 734.890.4609
jack@burgercollc.com

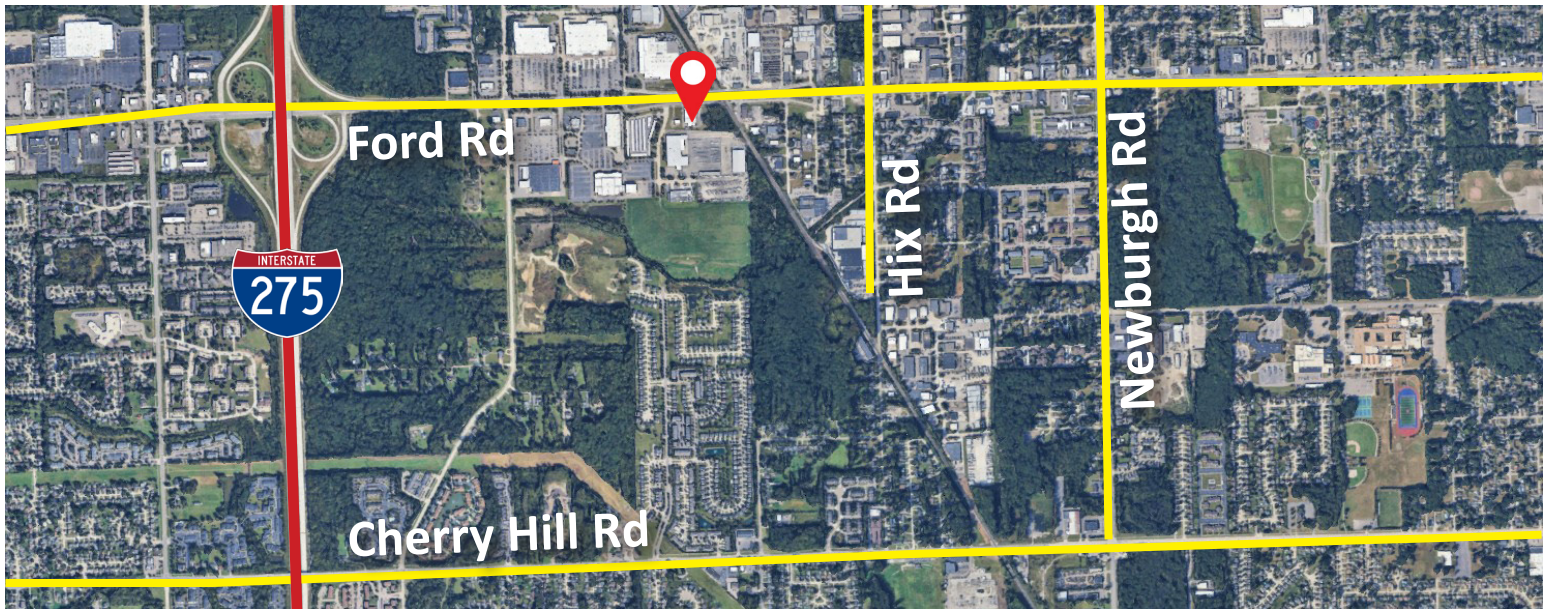
248.536.2888
www.burgercollc.com
38345 W. 10 Mile Road, Suite 100
Farmington Hills, MI 48335

Information contained herein is deemed to be reliable but is not guaranteed and may be withdrawn at any time.

FOR LEASE

39127 Ford Road
Westland, MI

AERIAL / LOCATION MAP



Burger

& COMPANY

Nicolo Burger, SIOR, CCIM
Vice President
Cell: 810.224.8103
nic@burgercollc.com

Jack Bushart
Senior Associate
Cell: 734.890.4609
jack@burgercollc.com

248.536.2888
www.burgercollc.com
38345 W. 10 Mile Road, Suite 100
Farmington Hills, MI 48335

Information contained herein is deemed to be reliable but is not guaranteed and may be withdrawn at any time.