

NORTHEAST PHILADELPHIA RETAIL
COTTMAN AVENUE & BUSTLETON AVENUE
 PHILADELPHIA, PA

±2,215 - 3,235 SF & PAD SITE AVAILABLE FOR LEASE

JOIN



INLINE SPACE & PAD SITE OPPORTUNITIES AVAILABLE



LEASED BY:



OWNED & MANAGED BY:



get in touch.

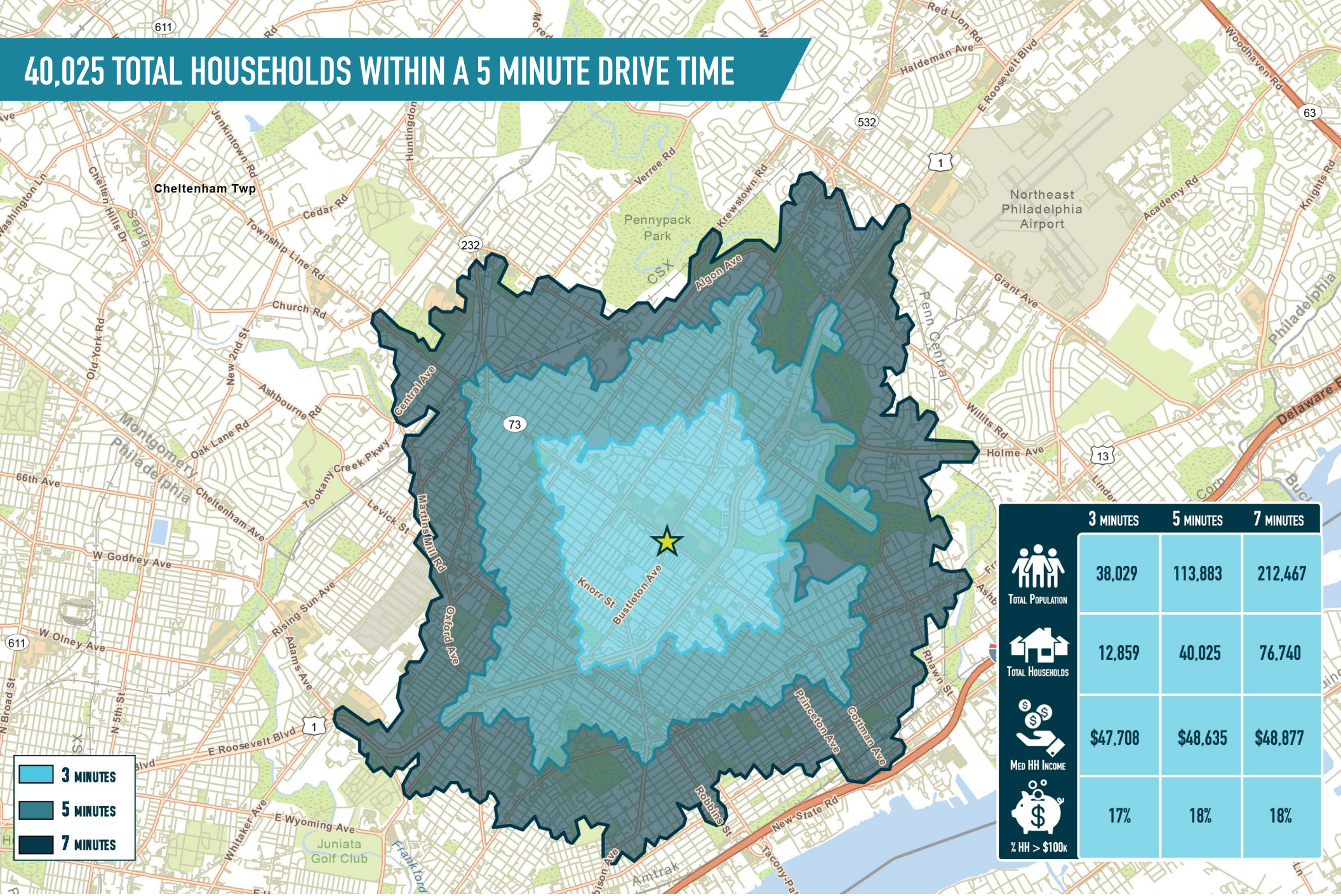
DAVID JUDD

office 856.866.1900
 direct 856.222.3037
 djudd@metrocommercial.com

JOE DOUGHERTY

office 610.825.5222
 direct 610.260.2670
 jdougherty@metrocommercial.com

40,025 TOTAL HOUSEHOLDS WITHIN A 5 MINUTE DRIVE TIME



3 MINUTES
5 MINUTES
7 MINUTES

	3 MINUTES	5 MINUTES	7 MINUTES
TOTAL POPULATION	38,029	113,883	212,467
TOTAL HOUSEHOLDS	12,859	40,025	76,740
MED HH INCOME	\$47,708	\$48,635	\$48,877
% HH > \$100K	17%	18%	18%

The information and images contained herein are from sources deemed reliable. However, Metro Commercial Real Estate, Inc. makes no representation whatsoever as to their accuracy or authenticity. Images shown may be modified for illustrative purposes. Images may be out-of-date and not current. 11.14.23

NORTHEAST PHILADELPHIA RETAIL
COTTMAN AVENUE & BUSTLETON AVENUE
 PHILADELPHIA, PA



www.metrocommercial.com

LOCATED IN DENSE NORTHEAST PHILADELPHIA WITH ±838,000 SF OF RETAIL ON 3 PROPERTIES



The information and images contained herein are from sources deemed reliable. However, Metro Commercial Real Estate, Inc. makes no representation whatsoever as to their accuracy or authenticity. Images shown may be modified for illustrative purposes. Images may be out-of-date and not current. 11.14.23

NORTHEAST PHILADELPHIA RETAIL
COTTMAN AVENUE & BUSTLETON AVENUE
PHILADELPHIA, PA



www.metrocommercial.com

DIRECTLY ADJACENT TO A NEW ±200,000 SF RETAIL RE-DEVELOPMENT



The information and images contained herein are from sources deemed reliable. However, Metro Commercial Real Estate, Inc. makes no representation whatsoever as to their accuracy or authenticity. Images shown may be modified for illustrative purposes. Images may be out-of-date and not current. 9.5.19

NORTHEAST PHILADELPHIA RETAIL COTTOMAN AVENUE & BUSTLETON AVENUE PHILADELPHIA, PA



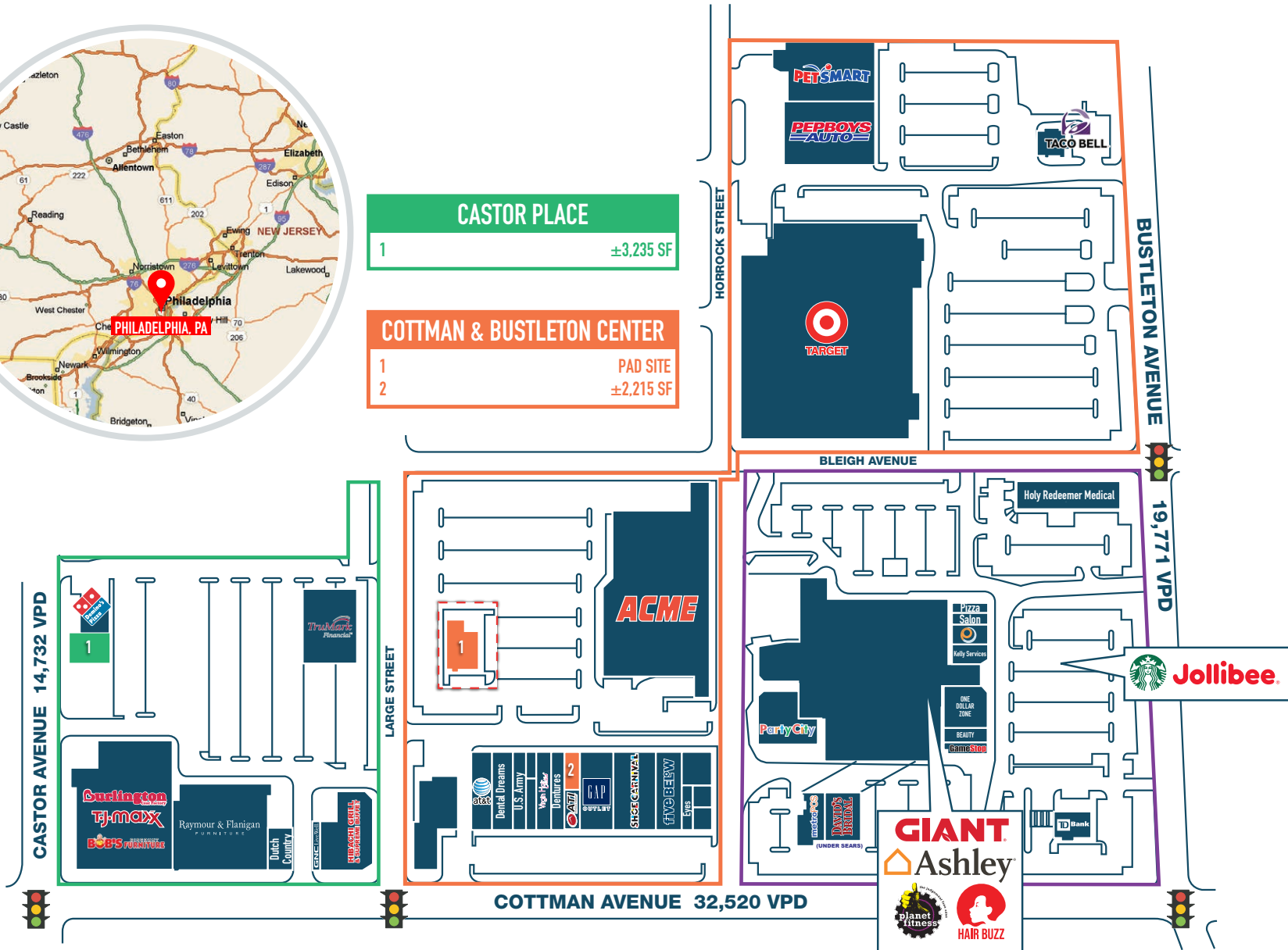
www.metrocommercial.com

AREA RETAILERS INCLUDE MACY'S, PC RICHARD & SON, AND GIANT



CASTOR PLACE
1 ±3,235 SF

COTTMAN & BUSTLETON CENTER
1 PAD SITE
2 ±2,215 SF



The information and images contained herein are from sources deemed reliable. However, Metro Commercial Real Estate, Inc. makes no representation whatsoever as to their accuracy or authenticity. Images shown may be modified for illustrative purposes. Images may be out-of-date and not current. 11.14.23

NORTHEAST PHILADELPHIA RETAIL COTTMAN AVENUE & BUSTLETON AVENUE PHILADELPHIA, PA



www.metrocommercial.com

RENDERINGS OF PAD SITES



The information and images contained herein are from sources deemed reliable. However, Metro Commercial Real Estate, Inc. makes no representation whatsoever as to their accuracy or authenticity. Images shown may be modified for illustrative purposes. Images may be out-of-date and not current. 11.14.23

NORTHEAST PHILADELPHIA RETAIL
COTTMAN AVENUE & BUSTLETON AVENUE
PHILADELPHIA, PA



www.metrocommercial.com