

# WEST BROAD RETAIL/OFFICE SPACE





# OFFERING SUMMARY

410 W JONES STREET



For Lease

## Property Description

Completed in 2019, West Broad is a full block historic redevelopment project located in the center of Savannah's rapidly reemerging Westside. Once home to some of Savannah's most well-known businesses including most recently, Thrifty Supply, West Broad has undergone an extensive exterior and interior renovation restoring the project to its heyday appearance. While paying homage to its past, West Broad now caters to a variety of retail and office tenants looking to capitalize on the energy of the area such as Foresight EyeCare, Origin Coffee and the National Marine Sanctuary Foundation. This development will add to the proven success of surrounding projects like The Grey, The Savannah Children's Museum, SCAD Museum and The Ships of the Sea Museum. With large public investments by the city for the Canal Street District and private investments like Plant Riverside underway in the same corridor, West Broad is primed for fantastic activity!

## General Information

Lease Rate:	\$25.00/SF/Year
Lease Structure:	NNN
Floor:	2 <sup>nd</sup> Floor
Usable SF:	1,702 SF
Divisible:	No
Zoning:	BC
Condition:	Updated
Available:	November 1 <sup>st</sup> , 2025

For more information, please contact:



### Alex Hansbarger

Commercial Leasing and Sales  
cell: 912-509-2108  
office: 912-236-1000  
alex@judgerealty.com



### Lori Judge

Founder & CEO  
cell: 912-484-1514  
Lori@judgerealty.com

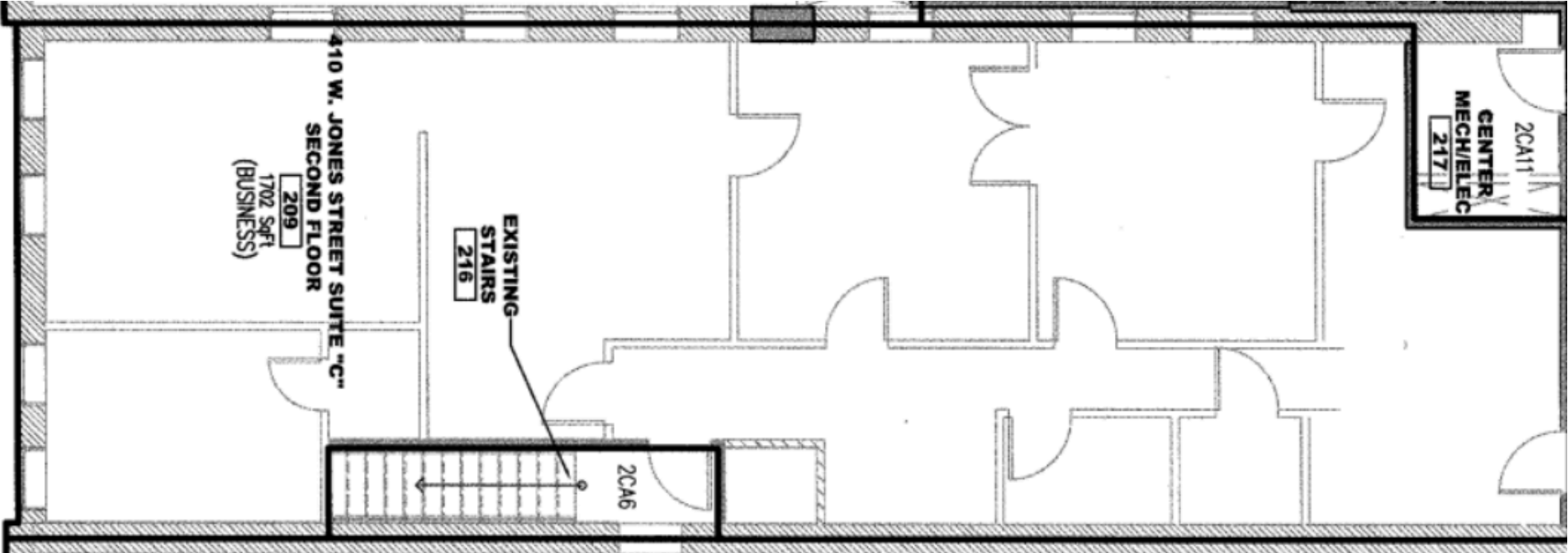


# INTERIOR PHOTOS

410 W JONES STREET



FLOOR PLAN  
410 W JONES STREET





# DEMOGRAPHICS

410 W JONES STREET



**142,788**  
HOUSEHOLDS



**\$59,459**  
AVERAGE HOUSEHOLD  
INCOME



**395,983**  
POPULATION



**5TH  
LARGEST**





# AERIAL LOCATION

410 W JONES STREET







## About Judge Realty

Judge Realty is the leader in Savannah Commercial Real Estate. We manage and lease over 500 properties in the Savannah area and work with local and national clients across the USA.

---


COMMERCIAL


---

RESIDENTIAL


---

PROPERTY MANAGEMENT

 Savannah, GA 31401

 912-236-1000

 [info@judgerealty.com](mailto:info@judgerealty.com)

 [judgerealty.com](http://judgerealty.com)