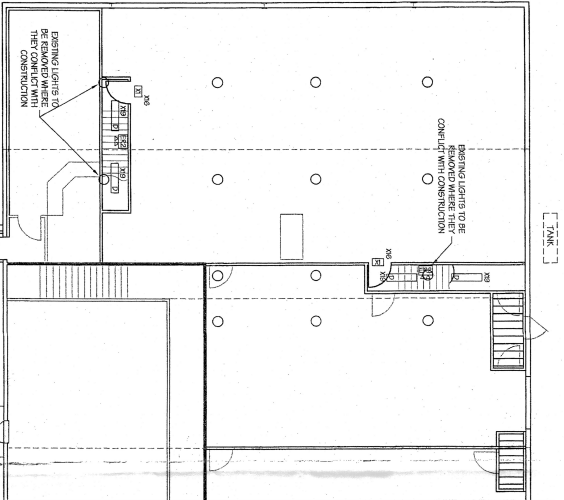


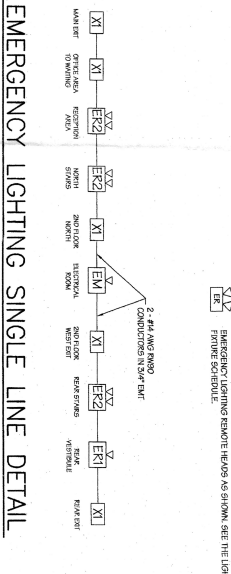
TANK



2ND FLOOR ELECTRICAL LAYOUT
SCALE 1/8" = 1'

- ELECTRICAL SPECIFICATIONS - DIVISION 16**
1. GENERAL AND CONDITIONS: TO COMPLY WITH THE SPECIFICATIONS IN ACCORDANCE WITH CAN C22.1-M91.
 2. MATERIALS: ALL MATERIALS TO BE OF THE BEST QUALITY AVAILABLE AND TO BE APPROVED BY THE ENGINEER.
 3. WORKMANSHIP: ALL WORK TO BE DONE IN ACCORDANCE WITH THE CANADIAN ELECTRICAL CODE (CEC) AND THE NATIONAL ELECTRICAL SAFETY CODE (NEC).
 4. CONDUITS: ALL CONDUITS TO BE INSTALLED IN ACCORDANCE WITH THE CEC AND NEC. CONDUITS TO BE INSTALLED IN A MANNER THAT WILL PROTECT THEM FROM PHYSICAL DAMAGE AND FROM EXCESSIVE HEAT.
 5. WIRING: ALL WIRING TO BE INSTALLED IN ACCORDANCE WITH THE CEC AND NEC. WIRING TO BE INSTALLED IN A MANNER THAT WILL PROTECT IT FROM PHYSICAL DAMAGE AND FROM EXCESSIVE HEAT.
 6. SWITCHES: ALL SWITCHES TO BE INSTALLED IN ACCORDANCE WITH THE CEC AND NEC. SWITCHES TO BE INSTALLED IN A MANNER THAT WILL PROTECT THEM FROM PHYSICAL DAMAGE AND FROM EXCESSIVE HEAT.
 7. RECEPTACLES: ALL RECEPTACLES TO BE INSTALLED IN ACCORDANCE WITH THE CEC AND NEC. RECEPTACLES TO BE INSTALLED IN A MANNER THAT WILL PROTECT THEM FROM PHYSICAL DAMAGE AND FROM EXCESSIVE HEAT.
 8. LIGHTING: ALL LIGHTING TO BE INSTALLED IN ACCORDANCE WITH THE CEC AND NEC. LIGHTING TO BE INSTALLED IN A MANNER THAT WILL PROTECT THEM FROM PHYSICAL DAMAGE AND FROM EXCESSIVE HEAT.
 9. PANELS: ALL PANELS TO BE INSTALLED IN ACCORDANCE WITH THE CEC AND NEC. PANELS TO BE INSTALLED IN A MANNER THAT WILL PROTECT THEM FROM PHYSICAL DAMAGE AND FROM EXCESSIVE HEAT.
 10. GROUNDING: ALL GROUNDING TO BE INSTALLED IN ACCORDANCE WITH THE CEC AND NEC. GROUNDING TO BE INSTALLED IN A MANNER THAT WILL PROTECT THEM FROM PHYSICAL DAMAGE AND FROM EXCESSIVE HEAT.
 11. LABELING: ALL ELECTRICAL EQUIPMENT TO BE PROPERLY LABELED IN ACCORDANCE WITH THE CEC AND NEC.
 12. TESTING: ALL ELECTRICAL SYSTEMS TO BE TESTED IN ACCORDANCE WITH THE CEC AND NEC.
 13. MAINTENANCE: ALL ELECTRICAL SYSTEMS TO BE MAINTAINED IN ACCORDANCE WITH THE CEC AND NEC.

EMERGENCY LIGHTING SINGLE LINE DETAIL



- LEGEND**
- 1. RECEPTACLE: A CIRCULAR SYMBOL WITH A VERTICAL LINE THROUGH IT.
 - 2. SWITCH: A CIRCULAR SYMBOL WITH A VERTICAL LINE THROUGH IT.
 - 3. LIGHTING: A CIRCULAR SYMBOL WITH A VERTICAL LINE THROUGH IT.
 - 4. PANEL: A RECTANGULAR SYMBOL WITH A VERTICAL LINE THROUGH IT.
 - 5. GROUNDING: A CIRCULAR SYMBOL WITH A VERTICAL LINE THROUGH IT.
 - 6. LABELING: A CIRCULAR SYMBOL WITH A VERTICAL LINE THROUGH IT.
 - 7. TESTING: A CIRCULAR SYMBOL WITH A VERTICAL LINE THROUGH IT.
 - 8. MAINTENANCE: A CIRCULAR SYMBOL WITH A VERTICAL LINE THROUGH IT.

LIGHTING FIXTURE SCHEDULE			
TYPE	DESCRIPTION	LUMENS	REMARKS
A	AT 4' BY 4' RECESSED FLOOREX - SURFACE	2,500 / 18,750 CDK	INSTALL IN RECEPTION AREA 1
B	RECESSED FLOOREX - SURFACE	2,500 / 18,750 CDK	INSTALL IN RECEPTION AREA 1
C	RECESSED FLOOREX - SURFACE	2,500 / 18,750 CDK	INSTALL IN RECEPTION AREA 1
D	RECESSED FLOOREX - SURFACE	2,500 / 18,750 CDK	INSTALL IN RECEPTION AREA 1
E	RECESSED FLOOREX - SURFACE	2,500 / 18,750 CDK	INSTALL IN RECEPTION AREA 1
F	RECESSED FLOOREX - SURFACE	2,500 / 18,750 CDK	INSTALL IN RECEPTION AREA 1
G	RECESSED FLOOREX - SURFACE	2,500 / 18,750 CDK	INSTALL IN RECEPTION AREA 1
H	RECESSED FLOOREX - SURFACE	2,500 / 18,750 CDK	INSTALL IN RECEPTION AREA 1
I	RECESSED FLOOREX - SURFACE	2,500 / 18,750 CDK	INSTALL IN RECEPTION AREA 1
J	RECESSED FLOOREX - SURFACE	2,500 / 18,750 CDK	INSTALL IN RECEPTION AREA 1
K	RECESSED FLOOREX - SURFACE	2,500 / 18,750 CDK	INSTALL IN RECEPTION AREA 1
L	RECESSED FLOOREX - SURFACE	2,500 / 18,750 CDK	INSTALL IN RECEPTION AREA 1
M	RECESSED FLOOREX - SURFACE	2,500 / 18,750 CDK	INSTALL IN RECEPTION AREA 1
N	RECESSED FLOOREX - SURFACE	2,500 / 18,750 CDK	INSTALL IN RECEPTION AREA 1
O	RECESSED FLOOREX - SURFACE	2,500 / 18,750 CDK	INSTALL IN RECEPTION AREA 1
P	RECESSED FLOOREX - SURFACE	2,500 / 18,750 CDK	INSTALL IN RECEPTION AREA 1
Q	RECESSED FLOOREX - SURFACE	2,500 / 18,750 CDK	INSTALL IN RECEPTION AREA 1
R	RECESSED FLOOREX - SURFACE	2,500 / 18,750 CDK	INSTALL IN RECEPTION AREA 1
S	RECESSED FLOOREX - SURFACE	2,500 / 18,750 CDK	INSTALL IN RECEPTION AREA 1
T	RECESSED FLOOREX - SURFACE	2,500 / 18,750 CDK	INSTALL IN RECEPTION AREA 1
U	RECESSED FLOOREX - SURFACE	2,500 / 18,750 CDK	INSTALL IN RECEPTION AREA 1
V	RECESSED FLOOREX - SURFACE	2,500 / 18,750 CDK	INSTALL IN RECEPTION AREA 1
W	RECESSED FLOOREX - SURFACE	2,500 / 18,750 CDK	INSTALL IN RECEPTION AREA 1
X	RECESSED FLOOREX - SURFACE	2,500 / 18,750 CDK	INSTALL IN RECEPTION AREA 1
Y	RECESSED FLOOREX - SURFACE	2,500 / 18,750 CDK	INSTALL IN RECEPTION AREA 1
Z	RECESSED FLOOREX - SURFACE	2,500 / 18,750 CDK	INSTALL IN RECEPTION AREA 1

PANEL SCHEDULE

PANEL	TYPE	VOLTS	WIRE	PHASE	TYPE	FEEDER	REMARKS
1	TYPE 1	200V	4	3	TYPE 1	3-44 AND 3-144 AND GND	3-44 AND 3-144 AND GND
2	TYPE 2	200V	4	3	TYPE 2	3-144 AND 3-144 AND GND	3-144 AND 3-144 AND GND
3	TYPE 3	200V	4	3	TYPE 3	3-144 AND 3-144 AND GND	3-144 AND 3-144 AND GND
4	TYPE 4	200V	4	3	TYPE 4	3-144 AND 3-144 AND GND	3-144 AND 3-144 AND GND
5	TYPE 5	200V	4	3	TYPE 5	3-144 AND 3-144 AND GND	3-144 AND 3-144 AND GND
6	TYPE 6	200V	4	3	TYPE 6	3-144 AND 3-144 AND GND	3-144 AND 3-144 AND GND
7	TYPE 7	200V	4	3	TYPE 7	3-144 AND 3-144 AND GND	3-144 AND 3-144 AND GND
8	TYPE 8	200V	4	3	TYPE 8	3-144 AND 3-144 AND GND	3-144 AND 3-144 AND GND
9	TYPE 9	200V	4	3	TYPE 9	3-144 AND 3-144 AND GND	3-144 AND 3-144 AND GND
10	TYPE 10	200V	4	3	TYPE 10	3-144 AND 3-144 AND GND	3-144 AND 3-144 AND GND
11	TYPE 11	200V	4	3	TYPE 11	3-144 AND 3-144 AND GND	3-144 AND 3-144 AND GND
12	TYPE 12	200V	4	3	TYPE 12	3-144 AND 3-144 AND GND	3-144 AND 3-144 AND GND
13	TYPE 13	200V	4	3	TYPE 13	3-144 AND 3-144 AND GND	3-144 AND 3-144 AND GND
14	TYPE 14	200V	4	3	TYPE 14	3-144 AND 3-144 AND GND	3-144 AND 3-144 AND GND
15	TYPE 15	200V	4	3	TYPE 15	3-144 AND 3-144 AND GND	3-144 AND 3-144 AND GND
16	TYPE 16	200V	4	3	TYPE 16	3-144 AND 3-144 AND GND	3-144 AND 3-144 AND GND
17	TYPE 17	200V	4	3	TYPE 17	3-144 AND 3-144 AND GND	3-144 AND 3-144 AND GND
18	TYPE 18	200V	4	3	TYPE 18	3-144 AND 3-144 AND GND	3-144 AND 3-144 AND GND
19	TYPE 19	200V	4	3	TYPE 19	3-144 AND 3-144 AND GND	3-144 AND 3-144 AND GND
20	TYPE 20	200V	4	3	TYPE 20	3-144 AND 3-144 AND GND	3-144 AND 3-144 AND GND
21	TYPE 21	200V	4	3	TYPE 21	3-144 AND 3-144 AND GND	3-144 AND 3-144 AND GND
22	TYPE 22	200V	4	3	TYPE 22	3-144 AND 3-144 AND GND	3-144 AND 3-144 AND GND
23	TYPE 23	200V	4	3	TYPE 23	3-144 AND 3-144 AND GND	3-144 AND 3-144 AND GND
24	TYPE 24	200V	4	3	TYPE 24	3-144 AND 3-144 AND GND	3-144 AND 3-144 AND GND
25	TYPE 25	200V	4	3	TYPE 25	3-144 AND 3-144 AND GND	3-144 AND 3-144 AND GND
26	TYPE 26	200V	4	3	TYPE 26	3-144 AND 3-144 AND GND	3-144 AND 3-144 AND GND
27	TYPE 27	200V	4	3	TYPE 27	3-144 AND 3-144 AND GND	3-144 AND 3-144 AND GND
28	TYPE 28	200V	4	3	TYPE 28	3-144 AND 3-144 AND GND	3-144 AND 3-144 AND GND
29	TYPE 29	200V	4	3	TYPE 29	3-144 AND 3-144 AND GND	3-144 AND 3-144 AND GND
30	TYPE 30	200V	4	3	TYPE 30	3-144 AND 3-144 AND GND	3-144 AND 3-144 AND GND
31	TYPE 31	200V	4	3	TYPE 31	3-144 AND 3-144 AND GND	3-144 AND 3-144 AND GND
32	TYPE 32	200V	4	3	TYPE 32	3-144 AND 3-144 AND GND	3-144 AND 3-144 AND GND
33	TYPE 33	200V	4	3	TYPE 33	3-144 AND 3-144 AND GND	3-144 AND 3-144 AND GND
34	TYPE 34	200V	4	3	TYPE 34	3-144 AND 3-144 AND GND	3-144 AND 3-144 AND GND
35	TYPE 35	200V	4	3	TYPE 35	3-144 AND 3-144 AND GND	3-144 AND 3-144 AND GND
36	TYPE 36	200V	4	3	TYPE 36	3-144 AND 3-144 AND GND	3-144 AND 3-144 AND GND
37	TYPE 37	200V	4	3	TYPE 37	3-144 AND 3-144 AND GND	3-144 AND 3-144 AND GND
38	TYPE 38	200V	4	3	TYPE 38	3-144 AND 3-144 AND GND	3-144 AND 3-144 AND GND
39	TYPE 39	200V	4	3	TYPE 39	3-144 AND 3-144 AND GND	3-144 AND 3-144 AND GND
40	TYPE 40	200V	4	3	TYPE 40	3-144 AND 3-144 AND GND	3-144 AND 3-144 AND GND
41	TYPE 41	200V	4	3	TYPE 41	3-144 AND 3-144 AND GND	3-144 AND 3-144 AND GND
42	TYPE 42	200V	4	3	TYPE 42	3-144 AND 3-144 AND GND	3-144 AND 3-144 AND GND
43	TYPE 43	200V	4	3	TYPE 43	3-144 AND 3-144 AND GND	3-144 AND 3-144 AND GND
44	TYPE 44	200V	4	3	TYPE 44	3-144 AND 3-144 AND GND	3-144 AND 3-144 AND GND
45	TYPE 45	200V	4	3	TYPE 45	3-144 AND 3-144 AND GND	3-144 AND 3-144 AND GND
46	TYPE 46	200V	4	3	TYPE 46	3-144 AND 3-144 AND GND	3-144 AND 3-144 AND GND
47	TYPE 47	200V	4	3	TYPE 47	3-144 AND 3-144 AND GND	3-144 AND 3-144 AND GND
48	TYPE 48	200V	4	3	TYPE 48	3-144 AND 3-144 AND GND	3-144 AND 3-144 AND GND
49	TYPE 49	200V	4	3	TYPE 49	3-144 AND 3-144 AND GND	3-144 AND 3-144 AND GND
50	TYPE 50	200V	4	3	TYPE 50	3-144 AND 3-144 AND GND	3-144 AND 3-144 AND GND
51	TYPE 51	200V	4	3	TYPE 51	3-144 AND 3-144 AND GND	3-144 AND 3-144 AND GND
52	TYPE 52	200V	4	3	TYPE 52	3-144 AND 3-144 AND GND	3-144 AND 3-144 AND GND
53	TYPE 53	200V	4	3	TYPE 53	3-144 AND 3-144 AND GND	3-144 AND 3-144 AND GND
54	TYPE 54	200V	4	3	TYPE 54	3-144 AND 3-144 AND GND	3-144 AND 3-144 AND GND
55	TYPE 55	200V	4	3	TYPE 55	3-144 AND 3-144 AND GND	3-144 AND 3-144 AND GND
56	TYPE 56	200V	4	3	TYPE 56	3-144 AND 3-144 AND GND	3-144 AND 3-144 AND GND
57	TYPE 57	200V	4	3	TYPE 57	3-144 AND 3-144 AND GND	3-144 AND 3-144 AND GND
58	TYPE 58	200V	4	3	TYPE 58	3-144 AND 3-144 AND GND	3-144 AND 3-144 AND GND
59	TYPE 59	200V	4	3	TYPE 59	3-144 AND 3-144 AND GND	3-144 AND 3-144 AND GND
60	TYPE 60	200V	4	3	TYPE 60	3-144 AND 3-144 AND GND	3-144 AND 3-144 AND GND
61	TYPE 61	200V	4	3	TYPE 61	3-144 AND 3-144 AND GND	3-144 AND 3-144 AND GND
62	TYPE 62	200V	4	3	TYPE 62	3-144 AND 3-144 AND GND	3-144 AND 3-144 AND GND
63	TYPE 63	200V	4	3	TYPE 63	3-144 AND 3-144 AND GND	3-144 AND 3-144 AND GND
64	TYPE 64	200V	4	3	TYPE 64	3-144 AND 3-144 AND GND	3-144 AND 3-144 AND GND
65	TYPE 65	200V	4	3	TYPE 65	3-144 AND 3-144 AND GND	3-144 AND 3-144 AND GND
66	TYPE 66	200V	4	3	TYPE 66	3-144 AND 3-144 AND GND	3-144 AND 3-144 AND GND
67	TYPE 67	200V	4	3	TYPE 67	3-144 AND 3-144 AND GND	3-144 AND 3-144 AND GND
68	TYPE 68	200V	4	3	TYPE 68	3-144 AND 3-144 AND GND	3-144 AND 3-144 AND GND
69	TYPE 69	200V	4	3	TYPE 69	3-144 AND 3-144 AND GND	3-144 AND 3-144 AND GND
70	TYPE 70	200V	4	3	TYPE 70	3-144 AND 3-144 AND GND	3-144 AND 3-144 AND GND
71	TYPE 71	200V	4	3	TYPE 71	3-144 AND 3-144 AND GND	3-144 AND 3-144 AND GND
72	TYPE 72	200V	4	3	TYPE 72	3-144 AND 3-144 AND GND	3-144 AND 3-144 AND GND
73	TYPE 73	200V	4	3	TYPE 73	3-144 AND 3-144 AND GND	3-144 AND 3-144 AND GND
74	TYPE 74	200V	4	3	TYPE 74	3-144 AND 3-144 AND GND	3-144 AND 3-144 AND GND
75	TYPE 75	200V	4	3	TYPE 75	3-144 AND 3-144 AND GND	3-144 AND 3-144 AND GND
76	TYPE 76	200V	4	3	TYPE 76	3-144 AND 3-144 AND GND	3-144 AND 3-144 AND GND
77	TYPE 77	200V	4	3	TYPE 77	3-144 AND 3-144 AND GND	3-144 AND 3-144 AND GND
78	TYPE 78	200V	4	3	TYPE 78	3-144 AND 3-144 AND GND	3-144 AND 3-144 AND GND
79	TYPE 79	200V	4	3	TYPE 79	3-144 AND 3-144 AND GND	3-144 AND 3-144 AND GND
80	TYPE 80	200V	4	3	TYPE 80	3-144 AND 3-144 AND GND	3-144 AND 3-144 AND GND
81	TYPE 81	200V	4	3	TYPE 81	3-144 AND 3-144 AND GND	3-144 AND 3-144 AND GND
82	TYPE 82	200V	4	3	TYPE 82	3-144 AND 3-144 AND GND	3-144 AND 3-144 AND GND
83	TYPE 83	200V	4	3	TYPE 83	3-144 AND 3-144 AND GND	3-144 AND 3-144 AND GND
84	TYPE 84	200V	4	3	TYPE 84	3-144 AND 3-144 AND GND	3-144 AND 3-144 AND GND
85	TYPE 85	200V	4	3	TYPE 85	3-144 AND 3-144 AND GND	3-144 AND 3-144 AND GND
86	TYPE 86	200V	4	3	TYPE 86	3-144 AND 3-144 AND GND	3-144 AND 3-144 AND GND
87	TYPE 87	200V	4	3	TYPE 87	3-144 AND 3-144 AND GND	3-144 AND 3-144 AND GND
88	TYPE 88	200V	4	3	TYPE 88	3-144 AND 3-144 AND GND	3-144 AND 3-144 AND GND
89	TYPE 89	200V	4	3	TYPE 89	3-144 AND 3-144 AND GND	3-144 AND 3-144 AND GND
90	TYPE 90	200V	4	3	TYPE 90	3-144 AND 3-144 AND GND	3-144 AND 3-144 AND GND
91	TYPE 91	200V	4	3	TYPE 91	3-144 AND 3-144 AND GND	3-144 AND 3-144 AND GND
92	TYPE 92	200V	4	3	TYPE 92	3-144 AND 3-144 AND GND	3-144 AND 3-144 AND GND
93	TYPE 93	200V	4	3	TYPE 93	3-144 AND 3-144 AND GND	3-144 AND 3-144 AND GND
94	TYPE 94	200V	4	3	TYPE 94	3-144 AND 3-144 AND GND	3-144 AND 3-144 AND GND
95	TYPE 95	200V	4	3	TYPE 95	3-144 AND 3-144 AND GND	3-144 AND 3-144 AND GND
96	TYPE 96	200V	4	3	TYPE 96	3-144 AND 3-144 AND GND	3-144 AND 3-144 AND GND
97	TYPE 97	200V	4	3	TYPE 97	3-144 AND 3-144 AND GND	3-144 AND 3-144 AND GND
98	TYPE 98	200V	4	3	TYPE 98	3-144 AND 3-144 AND GND	3-144 AND 3-144 AND GND
99	TYPE 99	200V	4	3	TYPE 99	3-144 AND 3-144 AND GND	3-144 AND 3-144 AND GND
100	TYPE 100	200V	4	3	TYPE 100	3-144 AND 3-144 AND GND	3-144 AND 3-144 AND GND

1ST FLOOR ELECTRICAL LAYOUT
SCALE 1/8" = 1'

STANT SE LIMITED

ENTERPRISE CAPE BRETON CORPORATION

OFFICE EXPANSION

PROJECT: 01-21

DATE: 01-21

30