

1548 WEST MAIN ST., WILLIMANTIC, CT

Medical Office/Retail Spaces For Lease



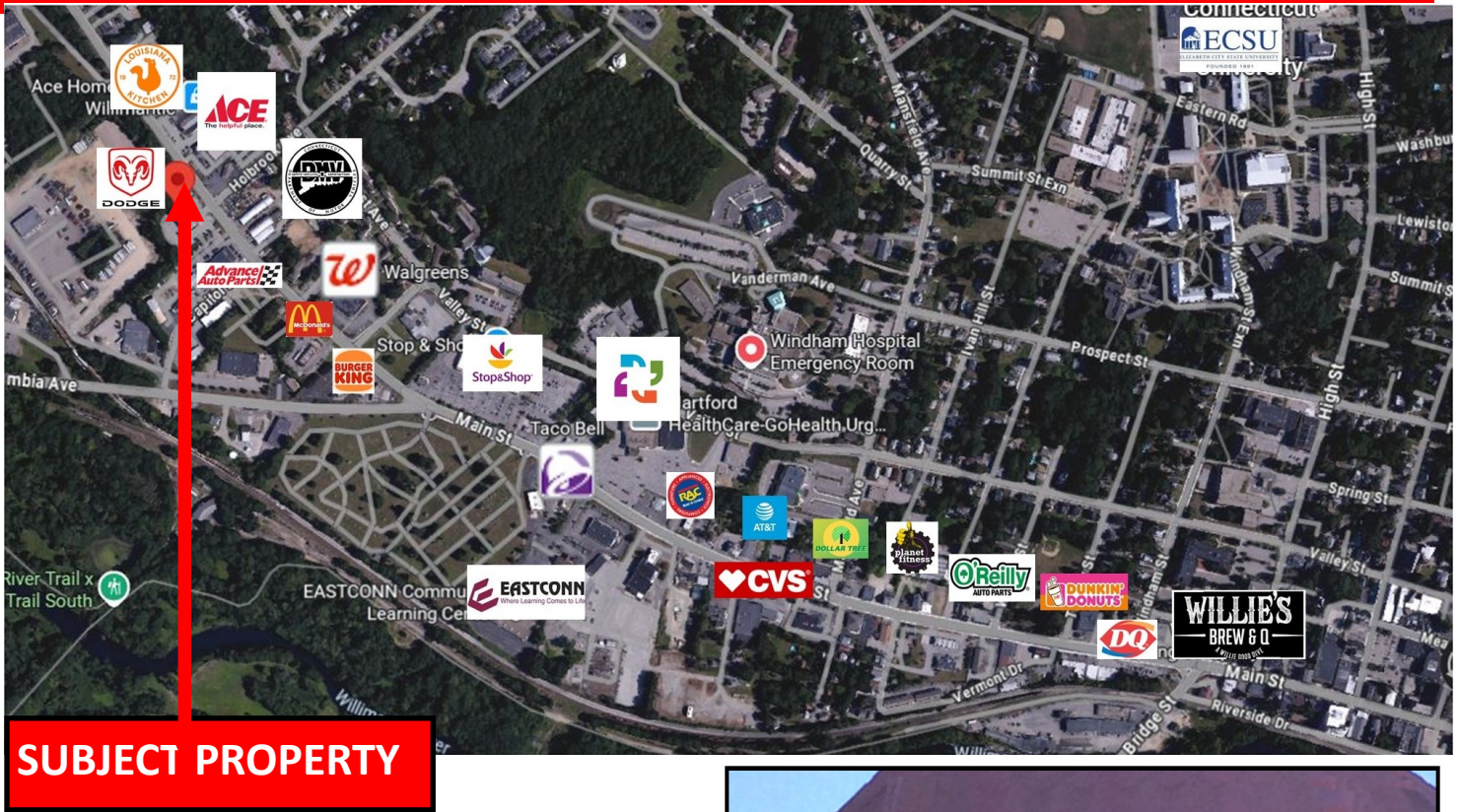
- ⇒ 1 Space Available
- ⇒ Rear Entrance
- ⇒ 1500 SF
- ⇒ \$14.00/SF + NNN
- ⇒ CAM \$2.75/SF
- ⇒ Taxes \$1.98/SF
- ⇒ Built out as Medical/ Dental Office Space w/ handicapped bathrooms
- ⇒ Close to UCONN & ECSU
- ⇒ Across from CT DMV
- ⇒ Located in the center of busy retail district on Rte 32 near Rte 6 interchange
- ⇒ Excellent location for professional offices & retail
- ⇒ - Traffic Count: 12,200

LYMAN

REAL ESTATE BROKERAGE & DEVELOPMENT

RON LYMAN

Main Office:
1160 Boston Post Rd.
Westbrook, CT 06498
Mailing Address:
73 Second Ave.
Westbrook, CT 06498
860-887-5000 Office
ronl@lymanre.com



Demographics	1 MILE	3 MILES	5 MILES	10 Miles
Total Population	6,426	26,282	38,092	96,231
Total Households	1,816	9,518	14,228	32,952
Average Household Income	\$45,119	\$64,952	\$80,045	\$97,307

All information stated is from sources deemed reliable and is submitted subject to errors, omission, changes of other terms and conditions, prior sales, financing or withdrawal without notice. Buyer/Tenant agents will be eligible for a portion of commission only if they have an existing signed representation.

