

Cambridge, MA

▶ Virtual Tour

**FOR SALE**

**1175**

**CAMBRIDGE ST**



**CAMBRIDGE CONDO  
RETAIL & LOWER LEVEL**



# LOCATION OVERVIEW



## PRIME LOCATION

Located in Cambridge, bordering Somerville, MA, 1175 Cambridge Street provides easy access to I-93, MBTA Green Line (Union Sq) & Red Line (Kendall/MIT, & Central Sq) Stations.

Neighborhood amenities include grocery stores, restaurants/cafes, theater, shopping mall and fitness club.

### NEIGHBORHOOD SNAPSHOT:

- Biogen
- Akamai
- HubSpot
- amazon
- facebook
- NOVARTIS
- bluebirdbio
- Takeda
- Microsoft
- HARVARD UNIVERSITY
- Google
- MIT
- KAYAK
- AREA FOUR
- CAVA
- LIFE ALIVE
- clover
- CVS
- CRAIGIE ON MAIN
- Veggie Galaxy
- ANNA'S TAQUERIA

DOWNTOWN

BACK BAY

**T** Charles/MGH

**T** Science Park

**CX** Cambridge Crossing  
1.3 MILES

**T** Lechmere

**T** Kendall/MIT

1.1 MILES

EAST CAMBRIDGE

**93**

1.2 MILES

star market

MIT  
1.8 MILES

SOMERVILLE

TARGET

1175  
CAMBRIDGE ST

CAMBRIDGE

MART **T** Central Sq

1.1 MILES

Starbucks

**T** Union Sq  
(7 MIN WALK)

WEBSTER AVE

PROSPECT ST

HAMPSHIRE ST

BROADWAY

WHOLE FOODS MARKET

TRADER JOE'S

SOMERVILLE AVE

WHOLE FOODS MARKET

BEACON ST

MARKET BASKET

TRAVEL TIME VIA

**T**

🚗

North Station

15 mins

07 mins

Logan Airport

10 mins

HARVARD UNIVERSITY  
0.8 MILES



# INVESTMENT HIGHLIGHTS

HBUILD

JUST-A-START

**CAMBRIDGE CONDO RETAIL & LOWER LEVEL**

**7,470 SF**

Owner Occupied - Will be Delivered Vacant

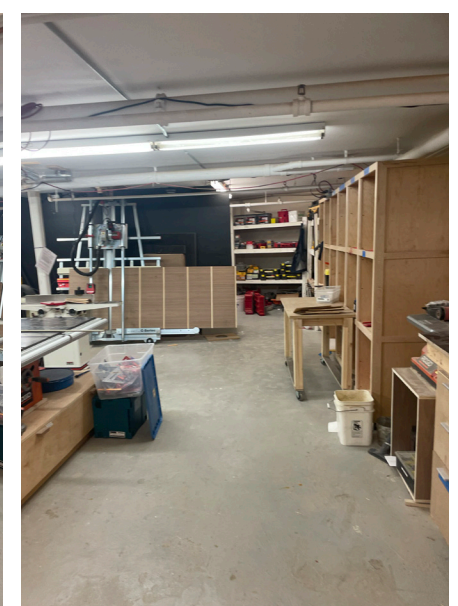
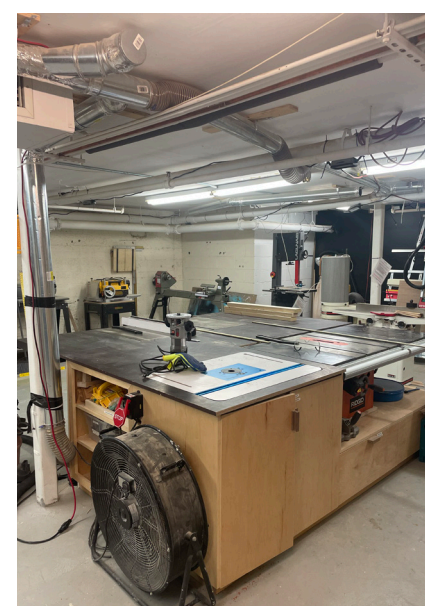
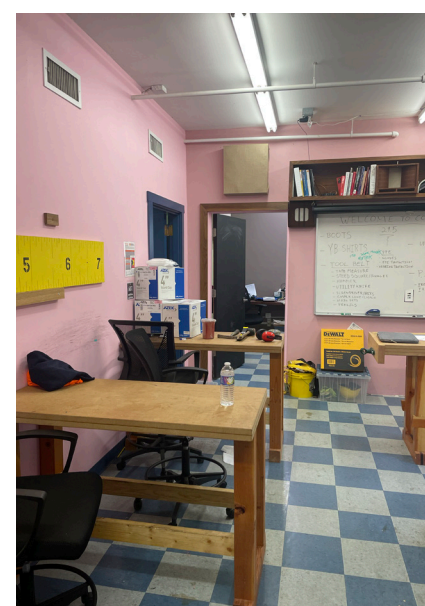
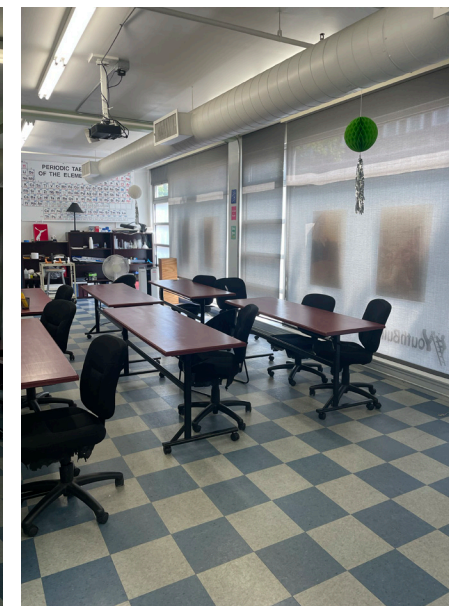
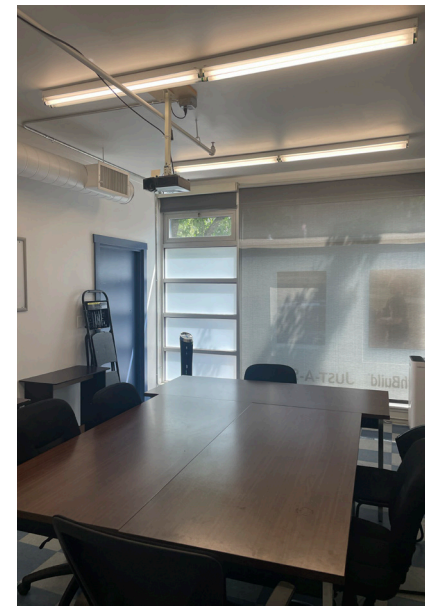
Ground Floor and Lower Level Space

Floor to Ceiling Windows on Cambridge Street

Signage Opportunity

**1175**  
CAMBRIDGE ST

## PROPERTY PHOTOS



## PROPERTY SPECS

1175/1179 Cambridge Street is a 3 story apartment building consisting of eight units and the retail condominium is for sale and will be delivered vacant.

**SIZE**

7,470 SF

**STORIES**

3

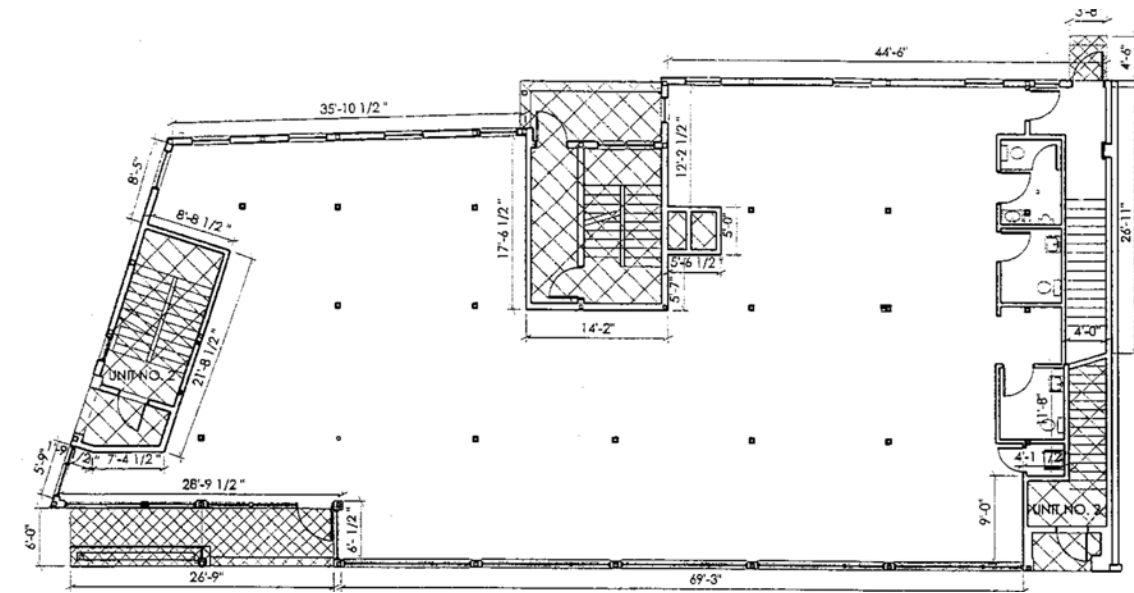
**SPACE**

Ground Floor and  
Lower Level Space

▶ Virtual Tour

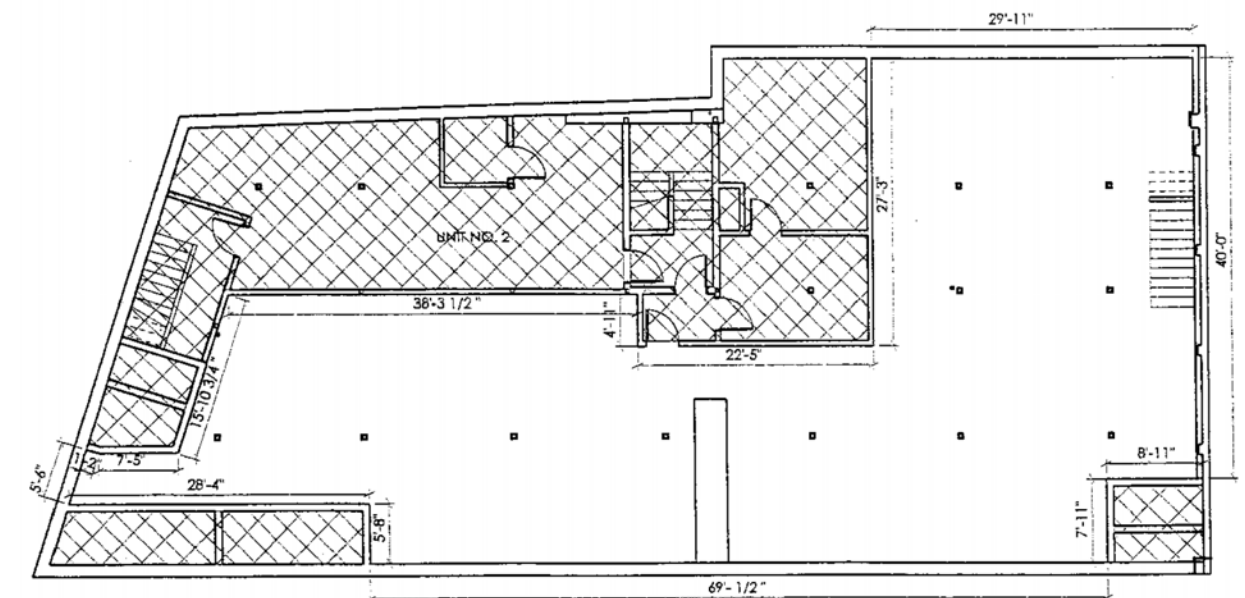
## FLOOR PLANS

**7,470 SF**



**FIRST FLOOR**

3,470 SF



**BASEMENT**

4,000 SF (excluding stairwells)

# 1175

## CAMBRIDGE ST

▶ [Virtual Tour](#)

**Contact:**

**Leigh Freudenheim**  
CEO  
617.448.1894  
[lfreudenheim@fpcre.com](mailto:lfreudenheim@fpcre.com)

**Ellie Cullinan**  
EVP, Principal  
617.835.3323  
[ecullinan@fpcre.com](mailto:ecullinan@fpcre.com)