

LONE PEAK CENTER 3



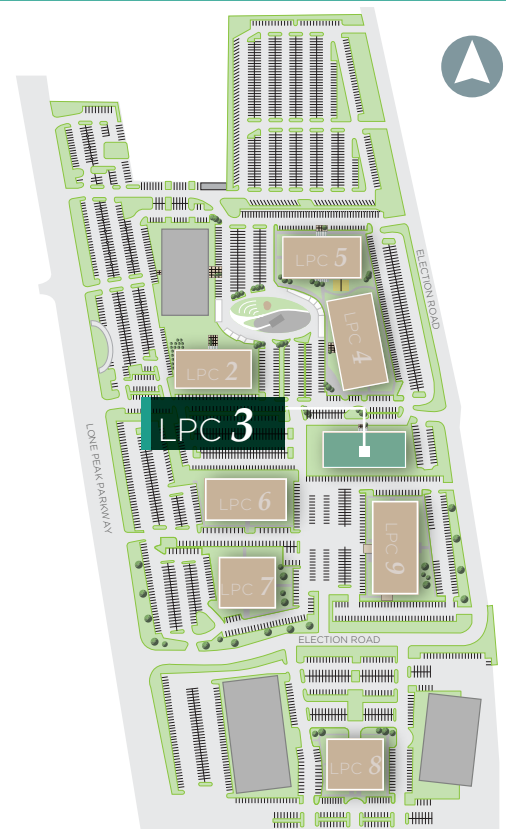
11814 SOUTH ELECTION DRIVE | SALT LAKE CITY, UTAH

BUILDING FEATURES

- 51,214 RSF
- 2,084 RSF on-site cafeteria space with patio (currently vacant)
- 7,317 RSF Office space available

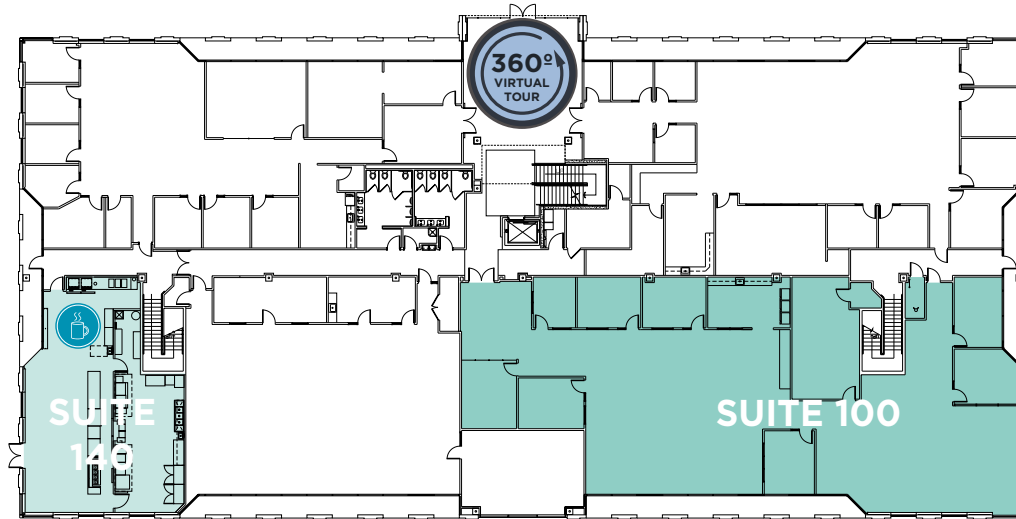


MAIER SIEBEL BABER



LONE PEAK CENTER 3

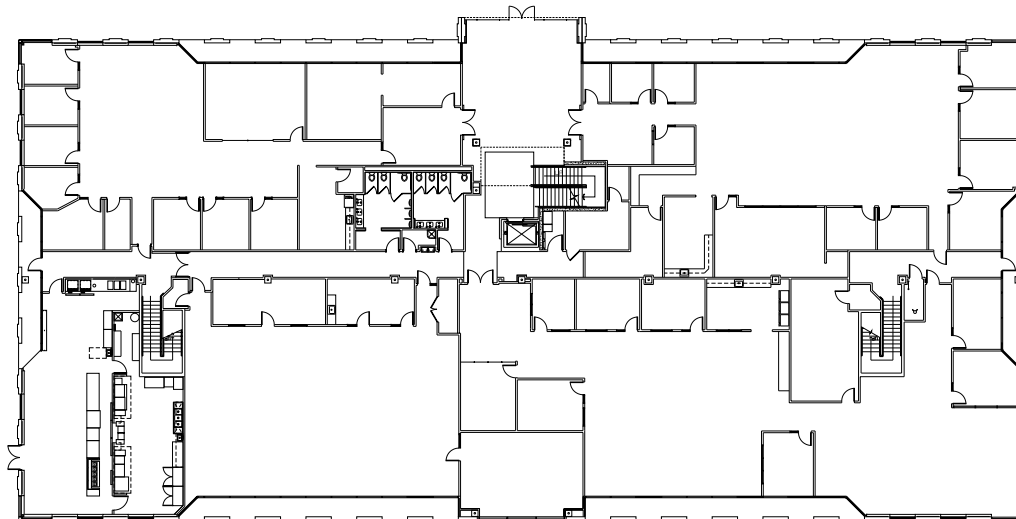
FIRST FLOOR



SUITE 100: 7,317 RSF
SUITE 140: 2,084 RSF - CAFETERIA SPACE



SECOND FLOOR



FULLY LEASED



FOR LEASING INFORMATION, PLEASE CONTACT:

DANA BAIRD, CCIM
Executive Managing Director
(801) 303 5526
dana.baird@cushwake.com

MIKE RICHMOND
Executive Managing Director
(801) 303 5434
mike.richmond@cushwake.com

 **CUSHMAN & WAKEFIELD**
MAIER SIEBEL BABER