

2917 NW NICOLAI STREET

Portland, OR 97210

FOR LEASE



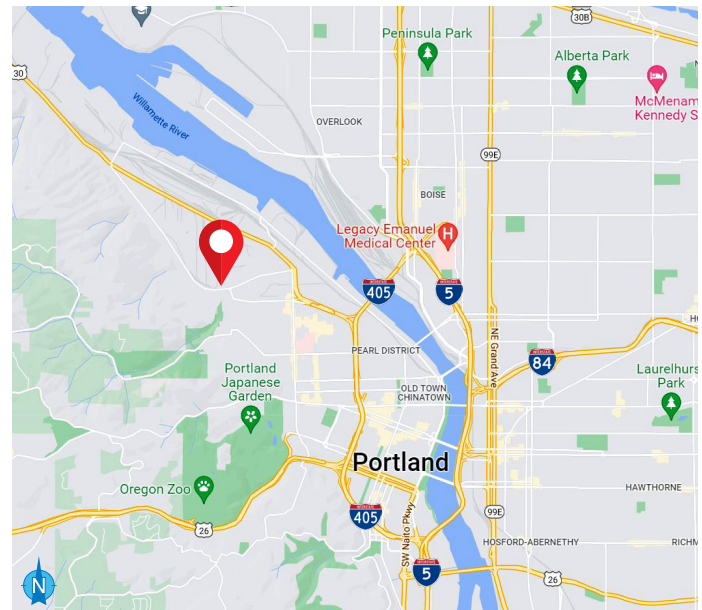
RETAIL SPACE FOR LEASE

DETAILS

- Size: \pm 3,220 SF
- Lease rate: Call for rate

FEATURES

- 2022 Construction
- Showroom or service
- Adjacent to 7-11
- Easy access to NW Yeon (Hwy 30) and I-405
- Corner exposure at NW Nicolai and NW Wardway
- Off street parking
- Located in NW Portland industrial area with more than 121,000 daytime employees within 2 miles
- One block from new residential development



04.15.2025

For more information or a property tour, please contact:

DOUG CARTER

503.225.8499

DougC@norris-stevens.com



Information contained herein has been obtained from others and considered to be reliable; however, a prospective purchaser or lessee is expected to verify all information to his/her own satisfaction.

Norris & Stevens

INVESTMENT REAL ESTATE SERVICES

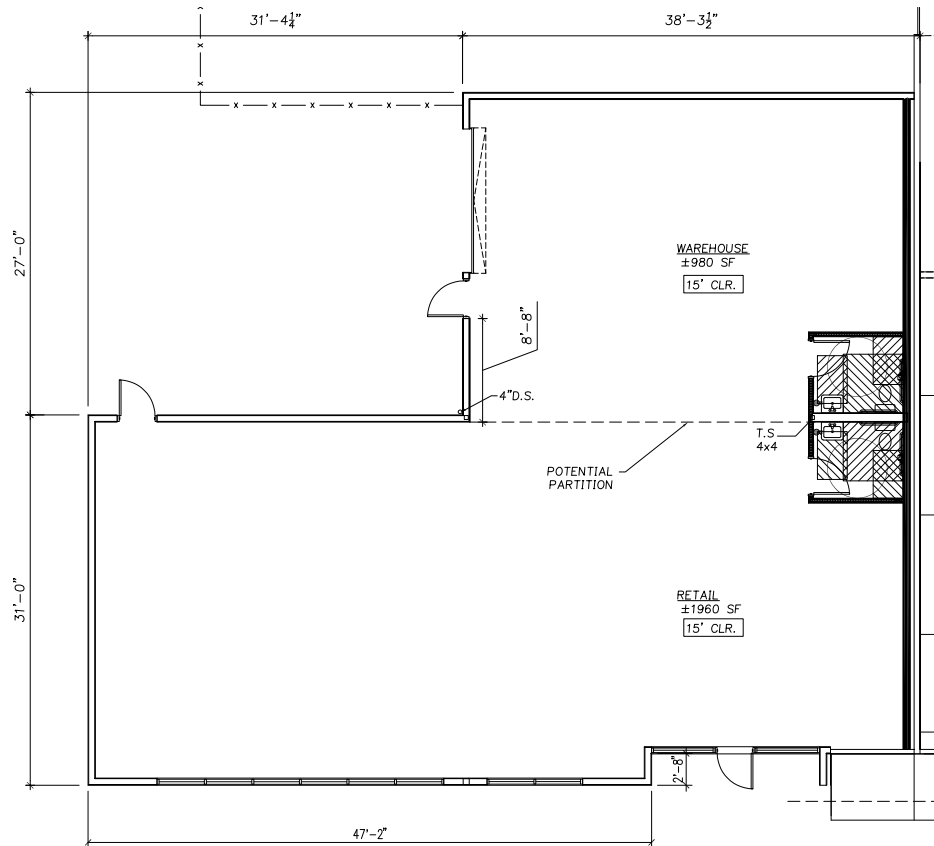
900 SW 5th Avenue • 17th Floor • Portland, OR 97204
503.223.3171 • norris-stevens.com

2917 NW NICOLAI STREET

Portland, OR 97210

FOR LEASE

FLOOR PLAN



For more information or a property tour, please contact:

DOUG CARTER

503.225.8499

DougC@norris-stevens.com

Norris & Stevens

INVESTMENT REAL ESTATE SERVICES

TCN
WORLDWIDE
REAL ESTATE SERVICES

AMO

Information contained herein has been obtained from others and considered to be reliable; however, a prospective purchaser or lessee is expected to verify all information to his/her own satisfaction.

900 SW 5th Avenue • 17th Floor • Portland, OR 97204
503.223.3171 • norris-stevens.com