

For Sale

# Bailey Dr. & N. Virginia St.



[Click for a Virtual Tour](#) 

145 Bailey Dr.  
Reno, NV 89506

**Michael Keating, SIOR**  
Partner  
775.386.9727  
[mkeating@logicCRE.com](mailto:mkeating@logicCRE.com)  
S.0174942

**Michael Dorn**  
Senior Associate  
775.453.4436  
[mdorn@logicCRE.com](mailto:mdorn@logicCRE.com)  
S.0189635



Listing Snapshot



**\$950,000**  
Sale Price



**± 3,802 SF**  
Total Square Footage



**\$250 PSF**  
Price Per Square Foot



**± 0.5 AC**  
Total Acreage

Property Highlights

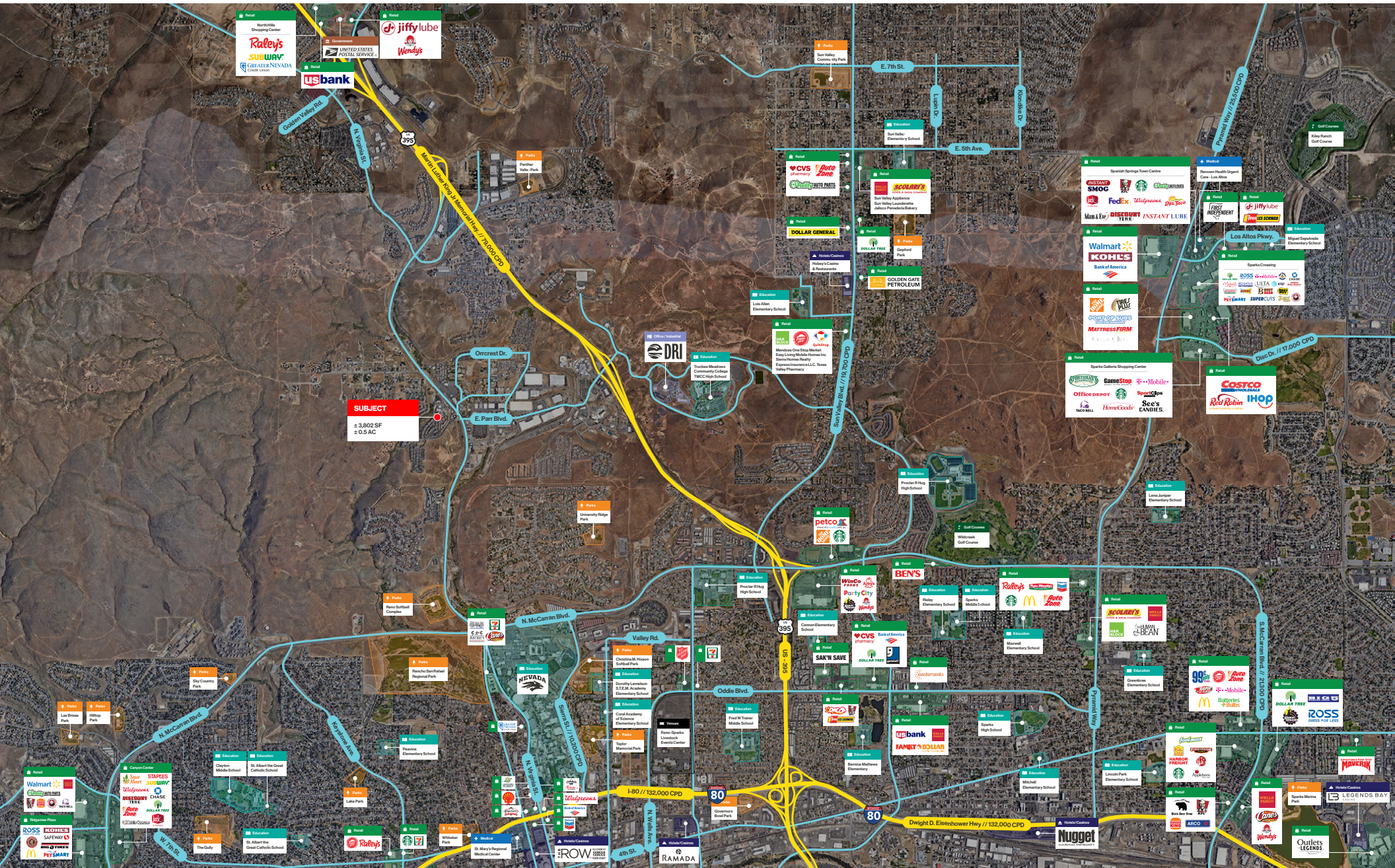
- Multi-level conversion in North Reno
- Lot allows drive around access
- Access to a two car garage from the yard
- Site off North Virginia and close to Hwy. 395
- Owner-User opportunity
- Newer roof and HVAC
- Four (4) carports on site
- Three (3) storage containers
- MS Zoning - Potential Uses:
  - Maintenance/Repair/Manufacturing Business
  - General office
  - Multifamily dwelling
- APN: 003-031-04

Demographics

	1-mile	3-mile	5-mile
2024 Population	7,618	77,127	212,985
2024 Average Household Income	\$89,818	\$87,355	\$91,824
2024 Total Households	2,660	29,481	85,202

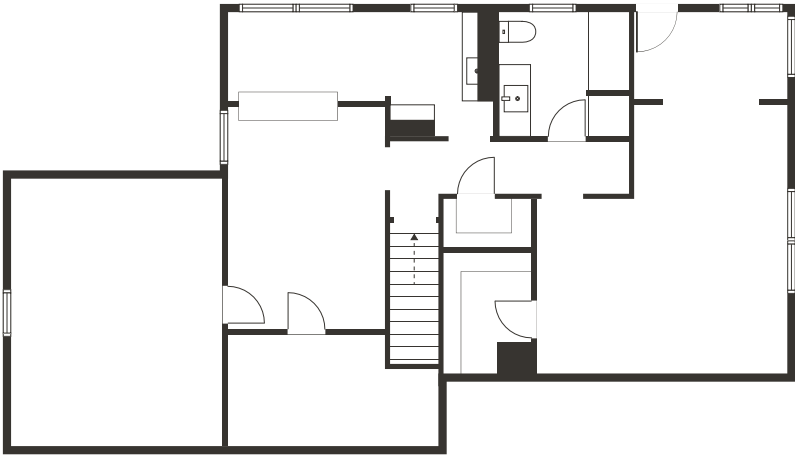




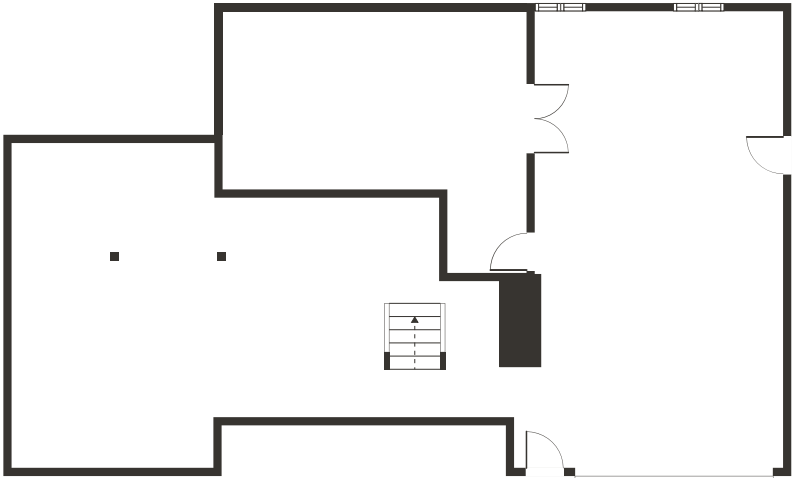




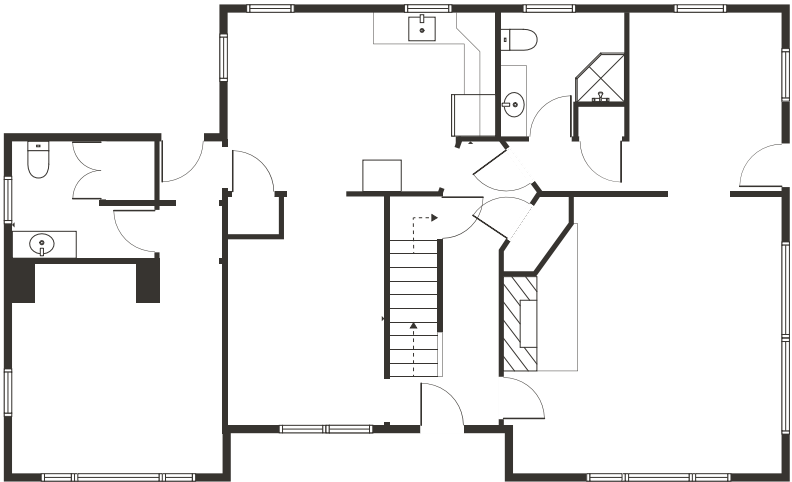
Floor Plan



Second Floor



Basement



First Floor



Property Photos





# LOGIC Commercial Real Estate

## Specializing in Brokerage and Receivership Services



Join our email list and  
connect with us on LinkedIn

The information herein was obtained from sources deemed reliable; however LOGIC Commercial Real Estate makes no guarantees, warranties or representation as to the completeness or accuracy thereof.

For inquiries please reach out to our team.

**Michael Keating, SIOR**

Partner  
775.386.9727  
mkeating@logicCRE.com  
S.0174942

**Michael Dorn**

Senior Associate  
775.453.4436  
mdorn@logicCRE.com  
S.0189635