

High Grove Burr Ridge

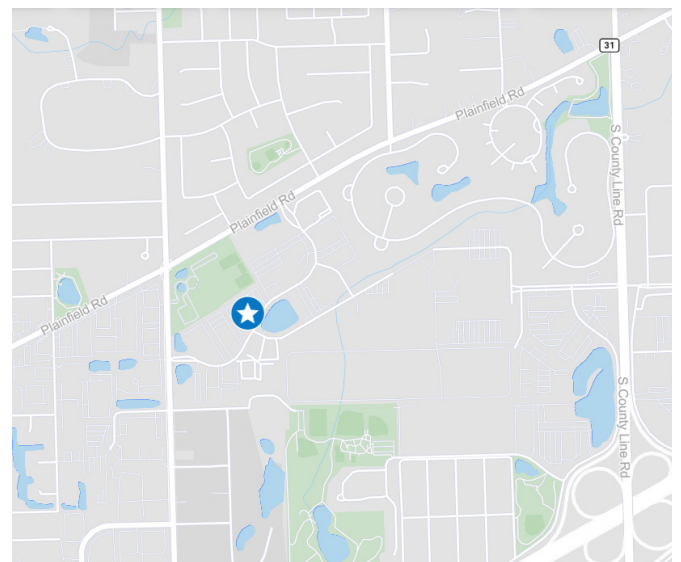
7020 High Grove Blvd.
Burr Ridge, Illinois

Move-in Ready! 35,509 SF Available



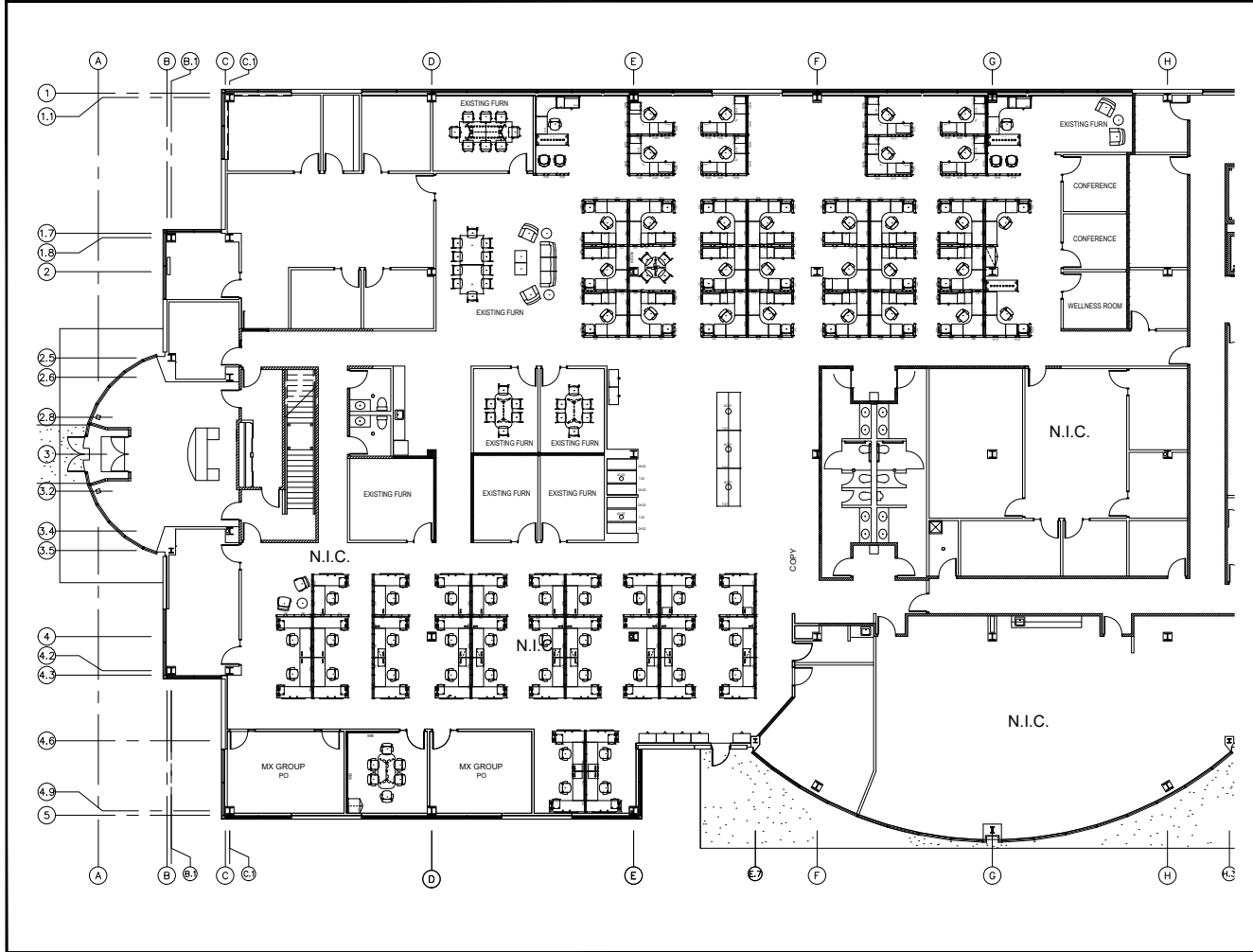
Property Overview

- + **Approx. 35,509 SF Available on the 1st floor**
- + Warehouse - 6,947 SF
- + Mezzanine - 5,081 SF
- + 2022 Est. Taxes - \$1.60 PSF
- + 2022 Est. Oper. Expenses - TBD
- + Herman Miller furniture included
- + On-site cafeteria
- + Easy I-55 access
- + 4.0/1,000 parking



Floor Plan

35,509 SF



Contact Us

Mark Konieczka

First Vice President

+1 630 573 7060

mark.konieczka@cbre.com

© 2023 CBRE, Inc. All rights reserved. This information has been obtained from sources believed reliable, but has not been verified for accuracy or completeness. You should conduct a careful, independent investigation of the property and verify all information. Any reliance on this information is solely at your own risk. CBRE and the CBRE logo are service marks of CBRE, Inc. All other marks displayed on this document are the property of their respective owners, and the use of such logos does not imply any affiliation with or endorsement of CBRE. Photos herein are the property of their respective owners. Use of these images without the express written consent of the owner is prohibited.