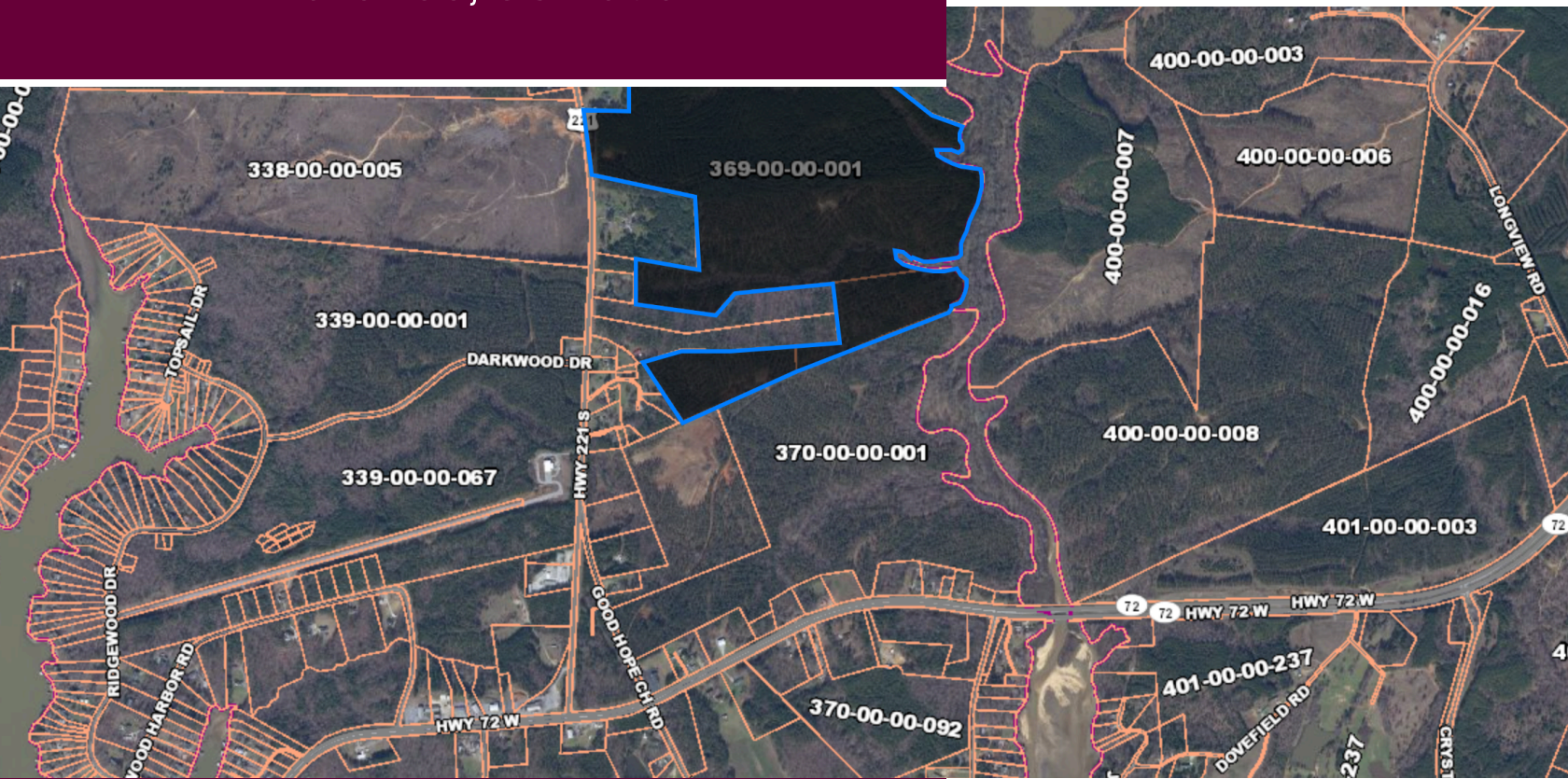


Land for Sale

0000 Highway 221
Waterloo, SC 29384



+/- 176 Acres
Offered at \$15,000/acre



Centrally located between Greenwood, Clinton and Laurens, this three parcel +/- 175 acre tract, less than 1 mile to the intersection of HWY 72 offers convenient access for many uses. Approximately 20 miles to Interstate 26 via Clinton. Gently sloping topography from Hwy 221 toward Cane Creek/ Lake Greenwood. Mature timber on all three parcels. Over 600' of Hwy 221 road frontage.

- **Approx. 1 mile to Hwy 72 Intersection**
- **Utilities: Water**
- **+/- 600' Hwy 221 road frontage**
- **Adjacent parcels also available up to 300 total acres.**
- **Tax ID: 369-00-00-001; 369-00-00-009; 369-00-00-010**

Andy Cox
Commercial Real Estate Specialist
3615379069
acox@joynercommercial.com
andycox.cdanjoyner.com

**BERKSHIRE
HATHAWAY**
HOMESERVICES
C. DAN JOYNER,
REALTORS®

