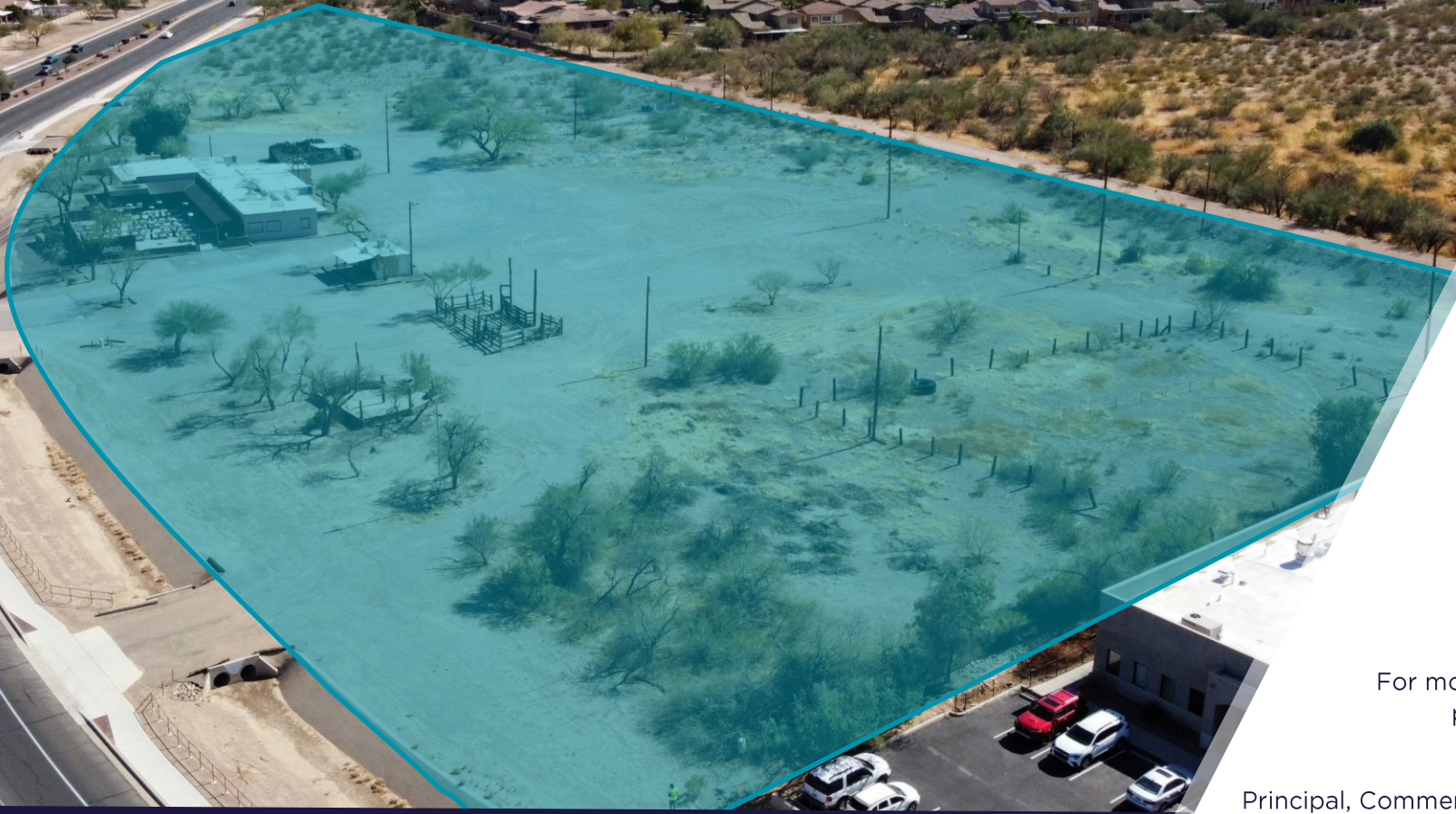


Silverbell Rd 22,752 VPD (2023)



LAND FOR SALE

±8.83 Acres (±384,635 SF)

8425 & 8501 N Silverbell Road, Tucson, AZ 85743

For more information
please contact:

Aaron LaPrise

Principal, Commercial Properties

+1 520 546 2770

alaprise@picor.com

Dave Hammack

Principal, Commercial Properties

+1 520 546 2712

dhammack@picor.com

PICOR Commercial Real Estate Services

5151 E. Broadway Blvd, Suite 115

Tucson, Arizona 85711

phone: +1 520 748 7100

picor.com



PROPERTY HIGHLIGHTS

±8.83 Acres (±384,635 SF)

Sale Price: Contact Brokers

HIGHLIGHTS

- Existing historic Li'l Abner's Restaurant property (3,756 SF built in 1958). *Please do not disturb tenant*
- Silverbell Road frontage
- Suitable for Retail, Medical, or Residential development
- Infill piece within Continental Ranch
- Flat topography

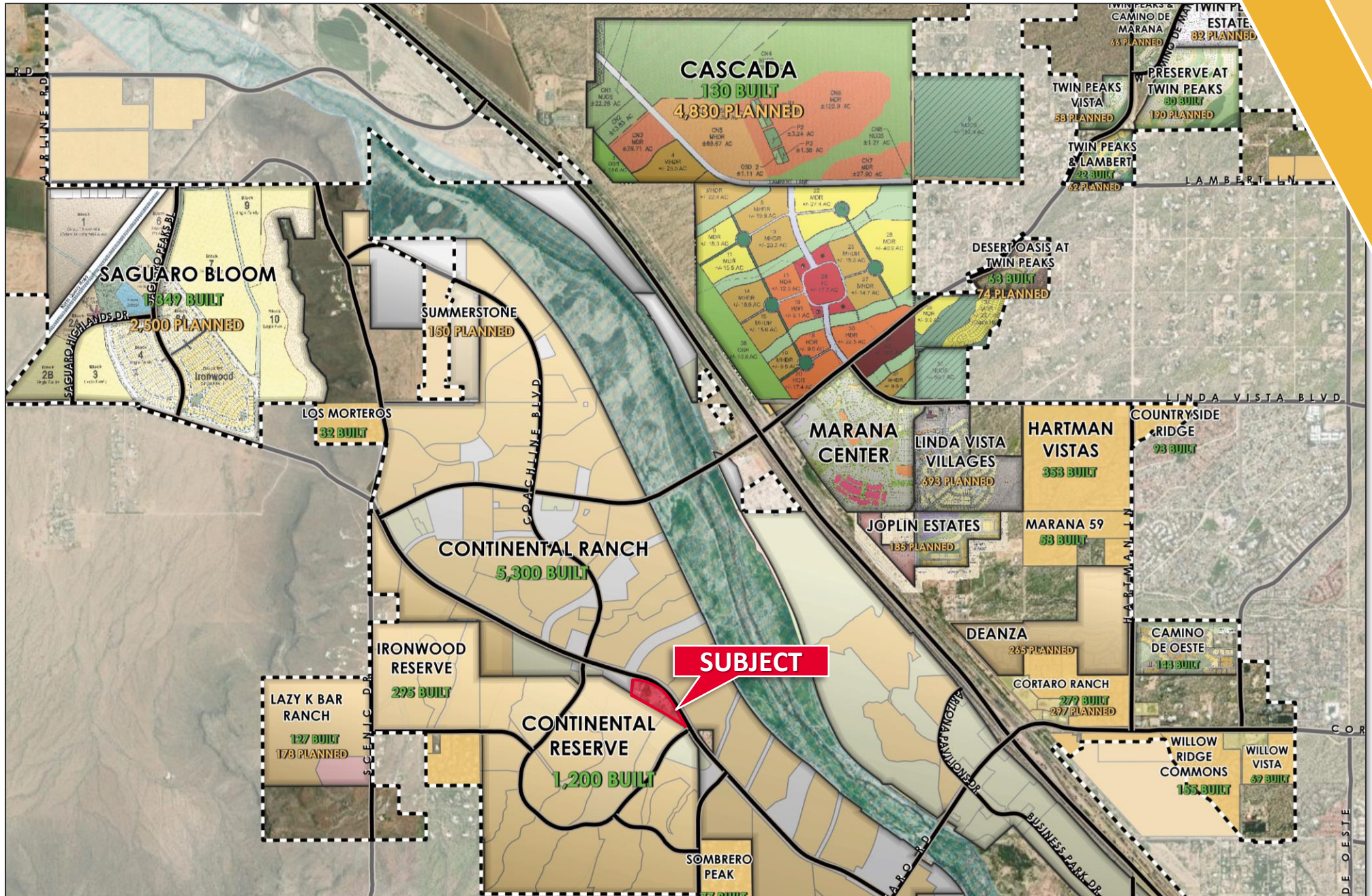
PROPERTY DETAILS

Assessor Parcel No(s)	221-21-001C & 221-21-002A
Zoning	NC, Neighborhood Commercial (Town of Marana)
Utilities	Utilities adjacent
Property Taxes	\$25,601.23 (2024)

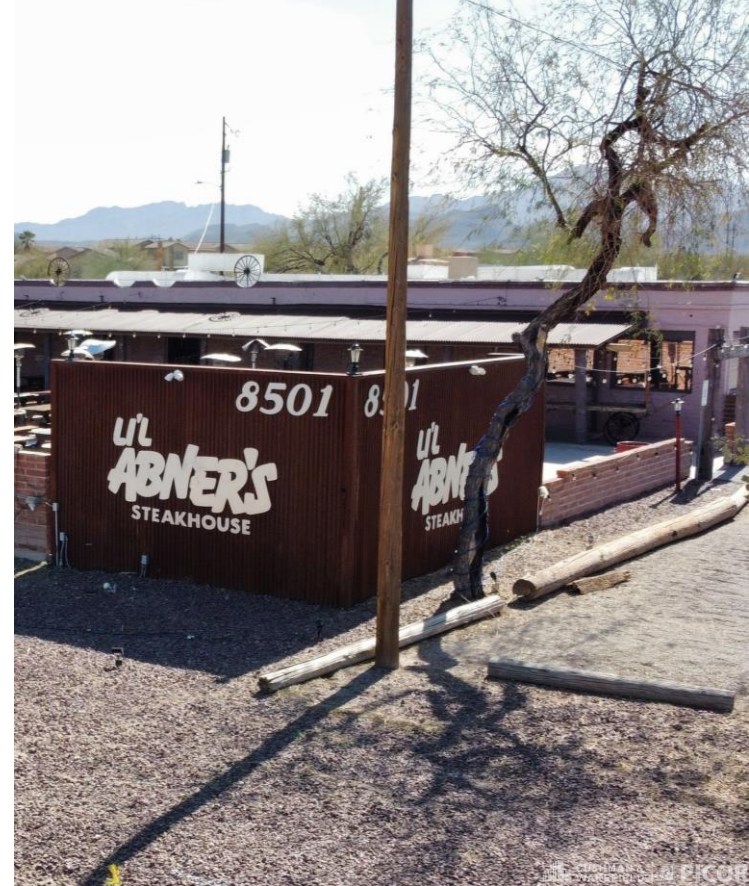
AERIAL



RESIDENTIAL DEVELOPMENT MAP



LOCATION MAP




DEMOGRAPHICS

1 MILE	5 MILES
10,435	67,295
POPULATION	POPULATION
\$147,873	\$124,099
AVERAGE HOUSEHOLD INCOME	AVERAGE HOUSEHOLD INCOME
987	12,085
DAYTIME POPULATION	DAYTIME POPULATION

TRADE MAP





Silverbell Rd 22,752 VPD (2023)

For more information
please contact:

Aaron LaPrise

Principal, Commercial Properties
+1 520 546 2770
alaprise@picor.com

Dave Hammack

Principal, Commercial Properties
+1 520 546 2712
dhammack@picor.com

Independently Owned and Operated / A Member of the Cushman & Wakefield Alliance

Cushman & Wakefield Copyright 2024. No warranty or representation, express or implied, is made to the accuracy or completeness of the information contained herein, and same is submitted subject to errors, omissions, change of price, rental or other conditions, withdrawal without notice, and to any special listing conditions imposed by the property owner(s). As applicable, we make no representation as to the condition of the property (or properties) in question.

03/03/2025

PICOR Commercial Real Estate Services
5151 E. Broadway Blvd, Suite 115
Tucson, Arizona 85711
phone: +1 520 748 7100
picor.com