



# Corporate Park Office Space for Lease

Eastpoint I & II | 6085 & 6095 Parkland Boulevard, Mayfield Heights, Ohio 44124



# EASTPOINT I & II

## Comments

- Corporate and professional headquarters with classic architecture in Landerhaven Corporate Park
- Amenities include: fitness center, free and abundant parking
- Close proximity to and accessibility from I-271
- Multiple restaurants, hotels, and retail shopping nearby, including: Staybridge Suites Hotel, Beachwood Place, and Legacy Village
- Signage opportunities

**Lease Rate**    \$19.95/SF Gross

## Availability

### EASTPOINT I

Suite 100	14,123 SF
Suite 180	3,297 SF
Suite 200	28,870 SF

### EASTPOINT II

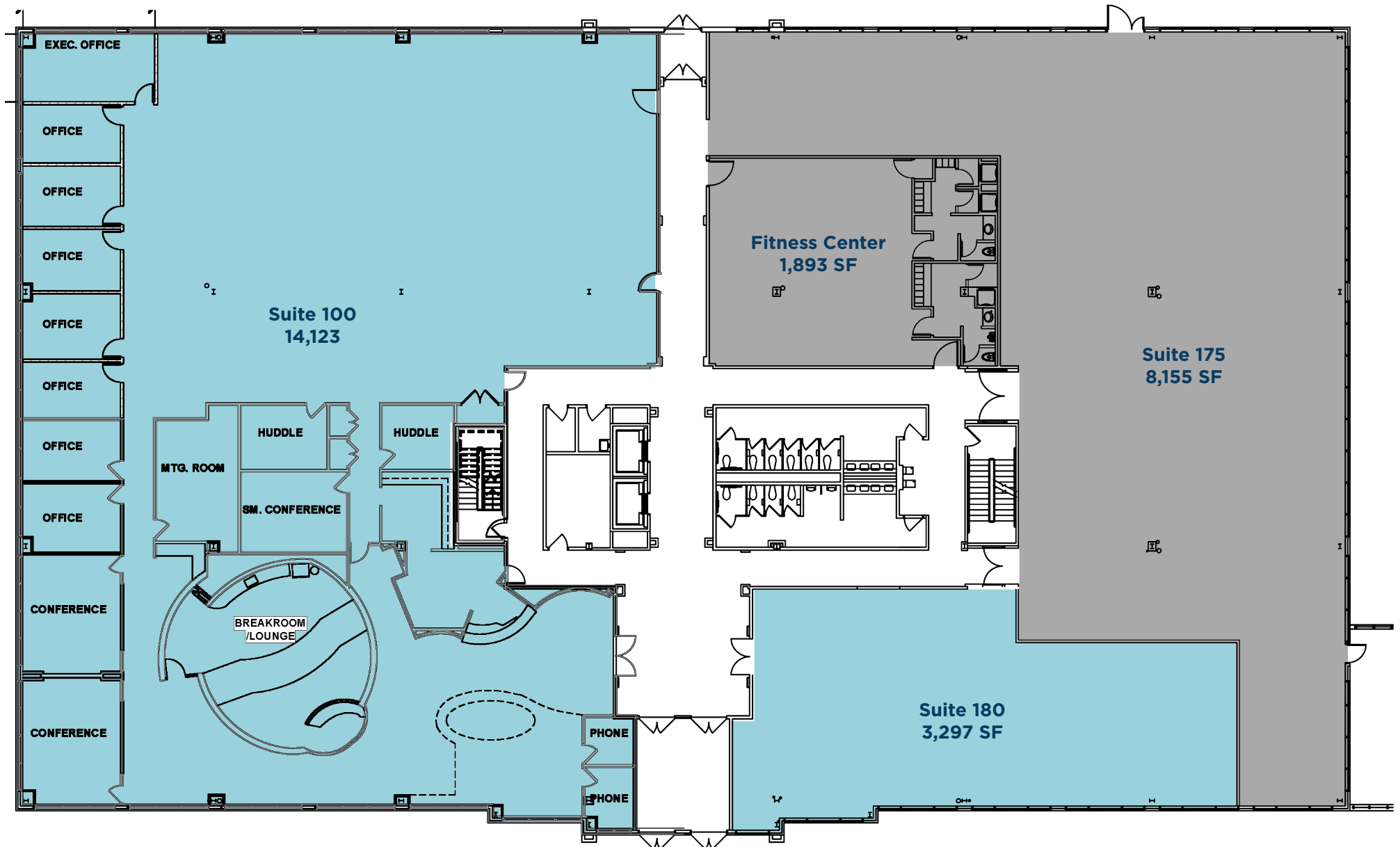
Suite 210	12,661 SF
Suite 225	1,351 SF
Suite 230	2,911 SF
Suite 300	14,132 SF

View Virtual Tour



# EASTPOINT I

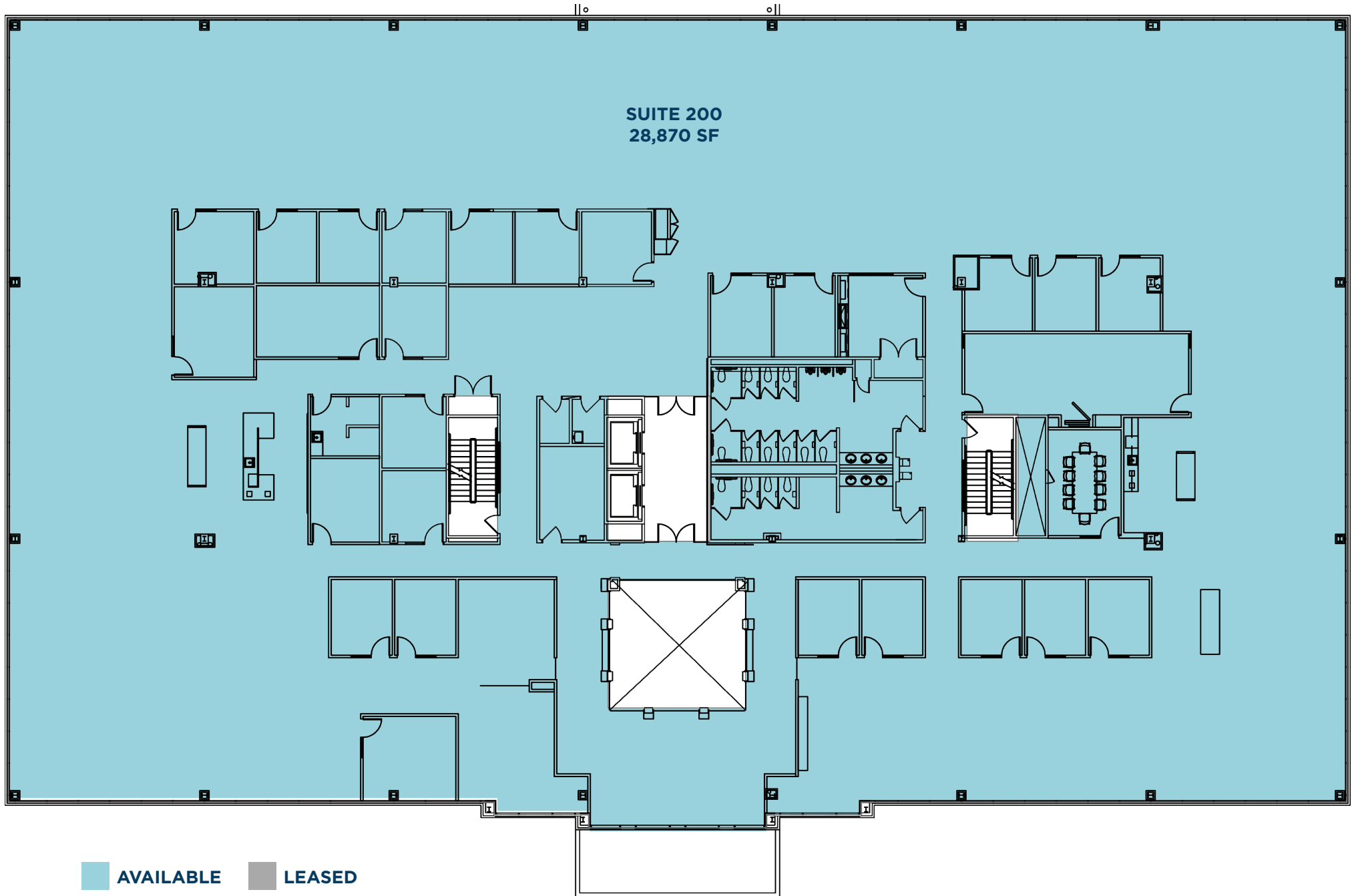
## First Floor



■ AVAILABLE ■ LEASED

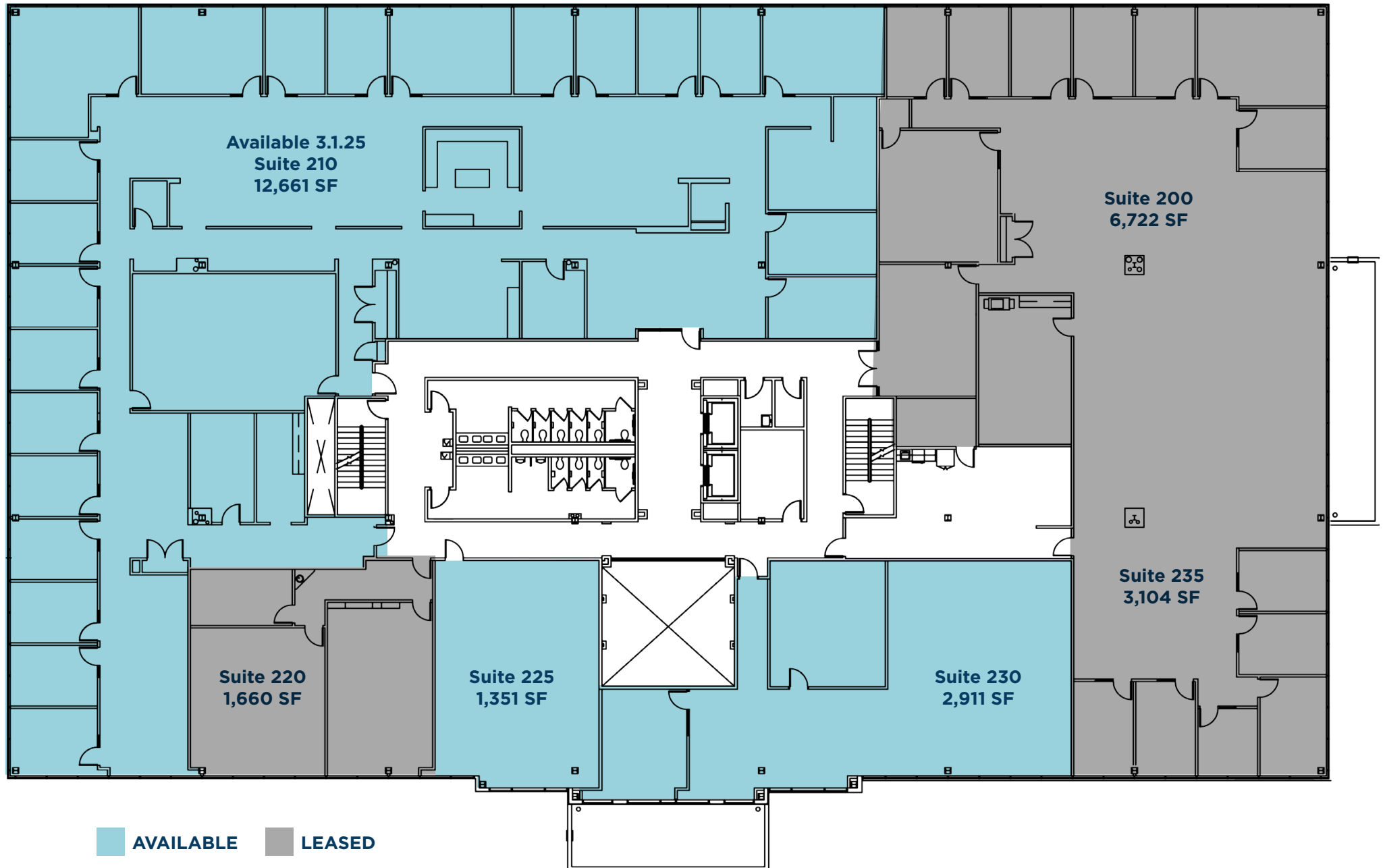
# EASTPOINT I

## Second Floor



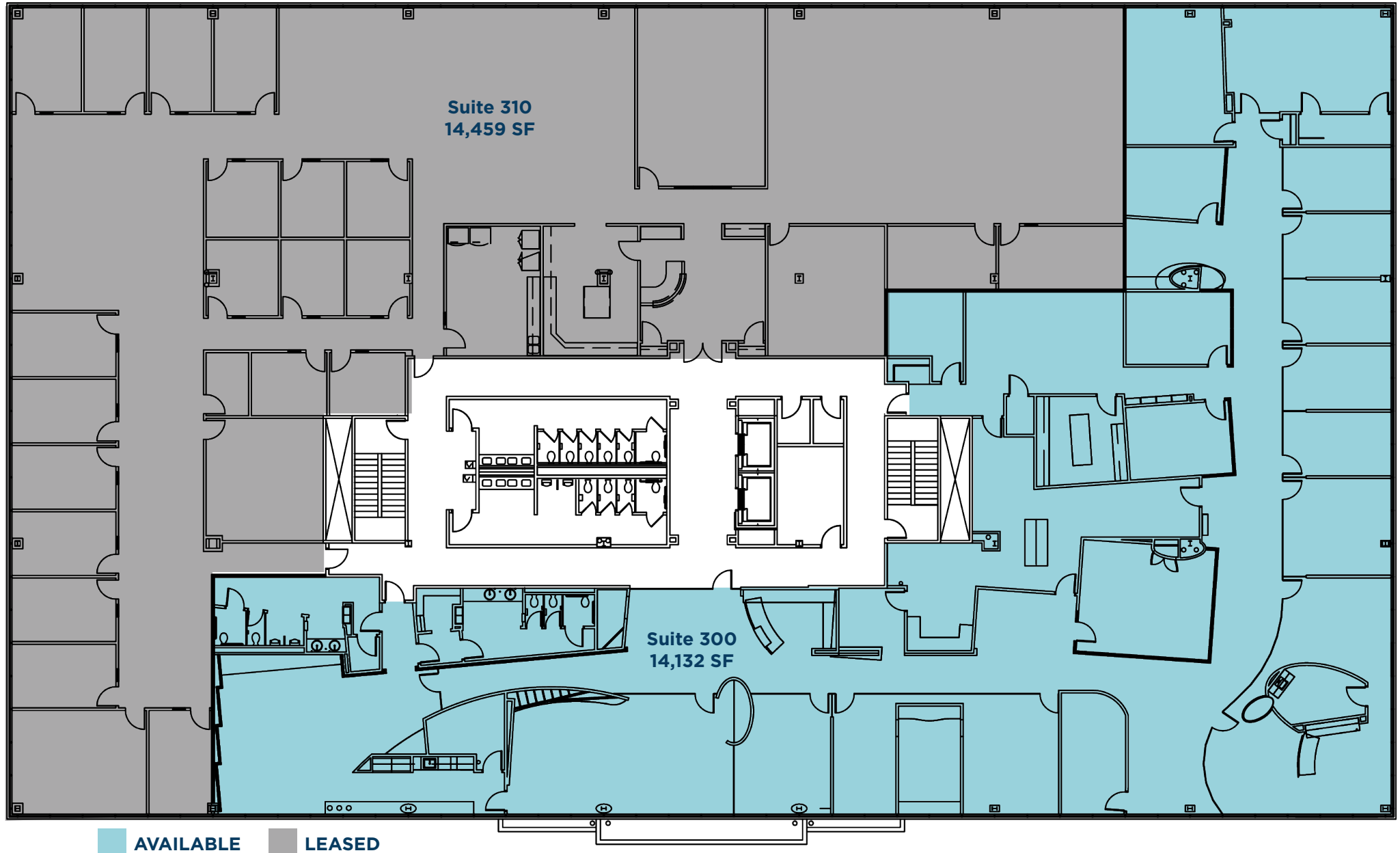
# EASTPOINT II

## Second Floor

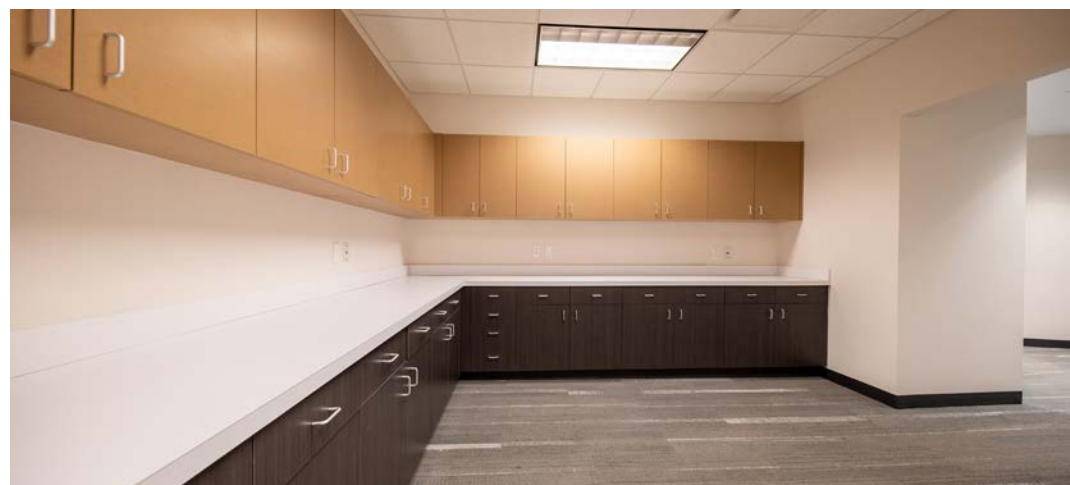
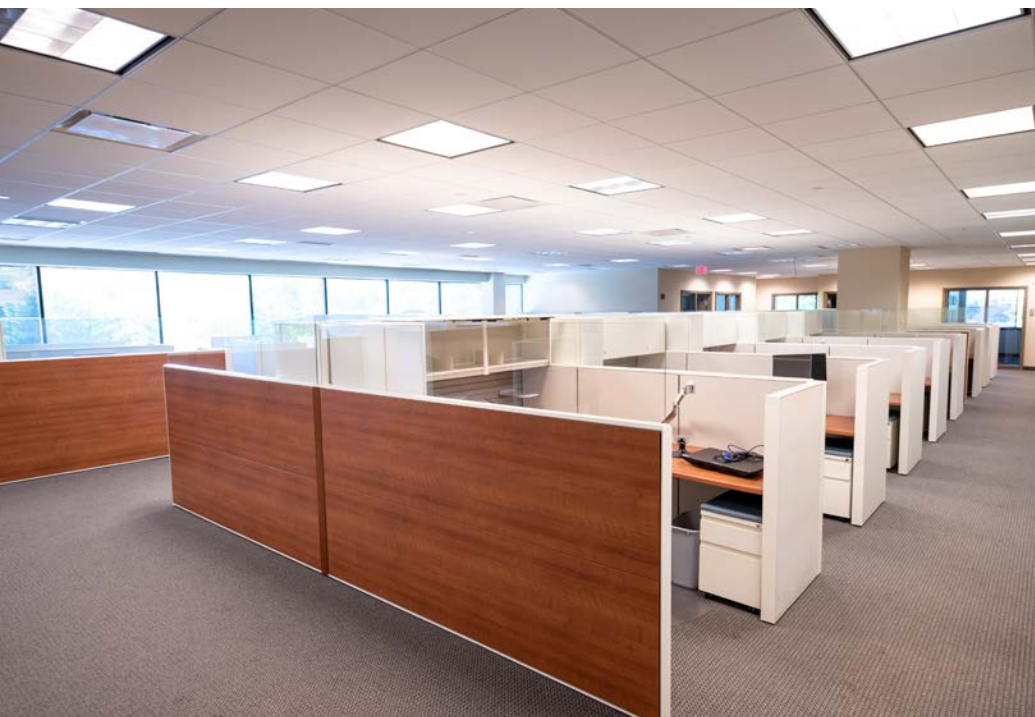


# EASTPOINT II

## Third Floor



# EASTPOINT I & II





**EASTPOINT I & II**  
6085 & 6095 Parkland Blvd.



**JIM KRIVANEK**  
Vice President  
jkrivanek@crescorealestate.com  
+1 216 525 1498

**RICO A. PIETRO, SIOR**  
Principal  
rpietro@crescorealestate.com  
+1 216 525 1473

**CONNOR REDMAN**  
Vice President  
credman@crescorealestate.com  
+1 216 525 1493

6100 Rockside Woods Blvd, Suite 200  
Cleveland, Ohio 44131  
Main +1 216 520 1200  
**crescorealestate.com**

*Independently Owned and Operated / A Member of the Cushman & Wakefield Alliance*  
Cushman & Wakefield Copyright 2023. No warranty or representation, express or implied, is made to the accuracy or completeness of the information contained herein, and same is submitted subject to errors, omissions, change of price, rental or other conditions, withdrawal without notice, and to any special listing conditions imposed by the property owner(s). As applicable, we make no representation as to the condition of the property (or properties) in question. A licensee at Cushman & Wakefield | CRESCO may have an interest in the client entity offering this property for sale.