

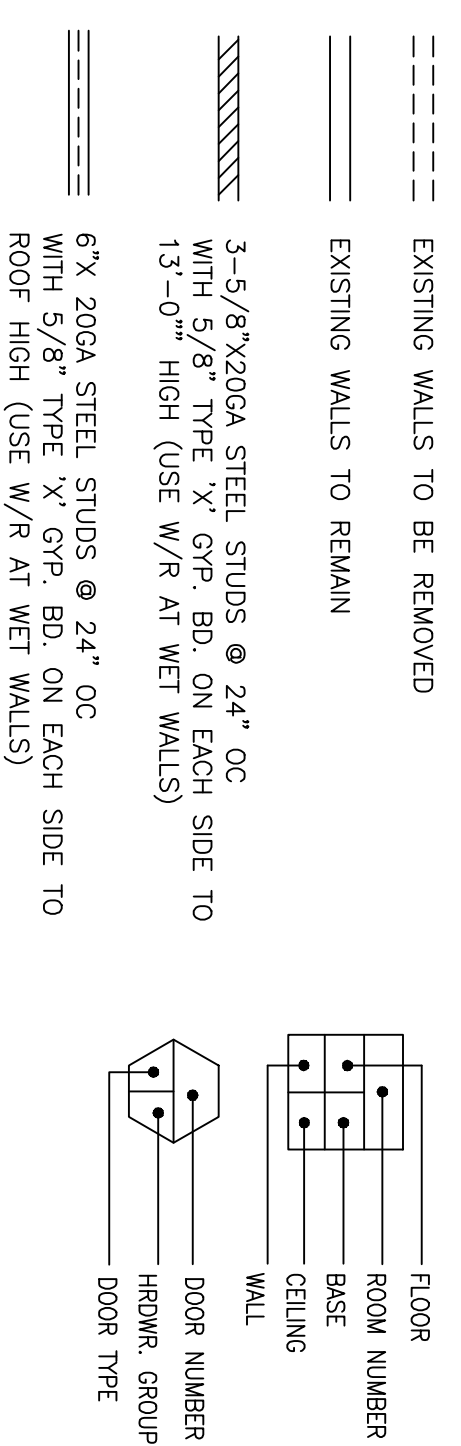
TACTILE SIGNAGE

For DSAAAC & SFMJ Tactile Exit Signage, For the purposes of the 2013 CBC, the term "tactile exit sign" shall mean those required signs that comply with the 2013 CBC
 For DSAAAC & SFMJ Where required, Tactile exit signs shall be required at the following locations:

1. Each grade - level exterior exit door shall be identified by a tactile exit with the word "EXIT".
2. Each exit door that leads directly to a grade - level exterior exit by means of stairway or ramp shall be identified by tactile exit sign with the following words as appropriate:
 - A. "EXIT STAIR DOWN"
 - B. "EXIT RAMP DOWN"
 - C. "EXIT STAIR UP"
 - D. "EXIT RAMP UP"

3. Each exit door that leads directly to a grade - level exterior exit means of an exit enclosure or an exit passageway shall be identified by tactile exit with the sign with the word "EXIT ROUTE".
4. Each exit access door from an interior room or area to a corridor or hallway that is required to have a visual exit sign, shall be identified by a tactile exit sign with the words "EXIT ROUTE".
5. Each exit door through a horizontal exit shall be identified by a sign with the words "TO EXIT".

WALL LEGEND



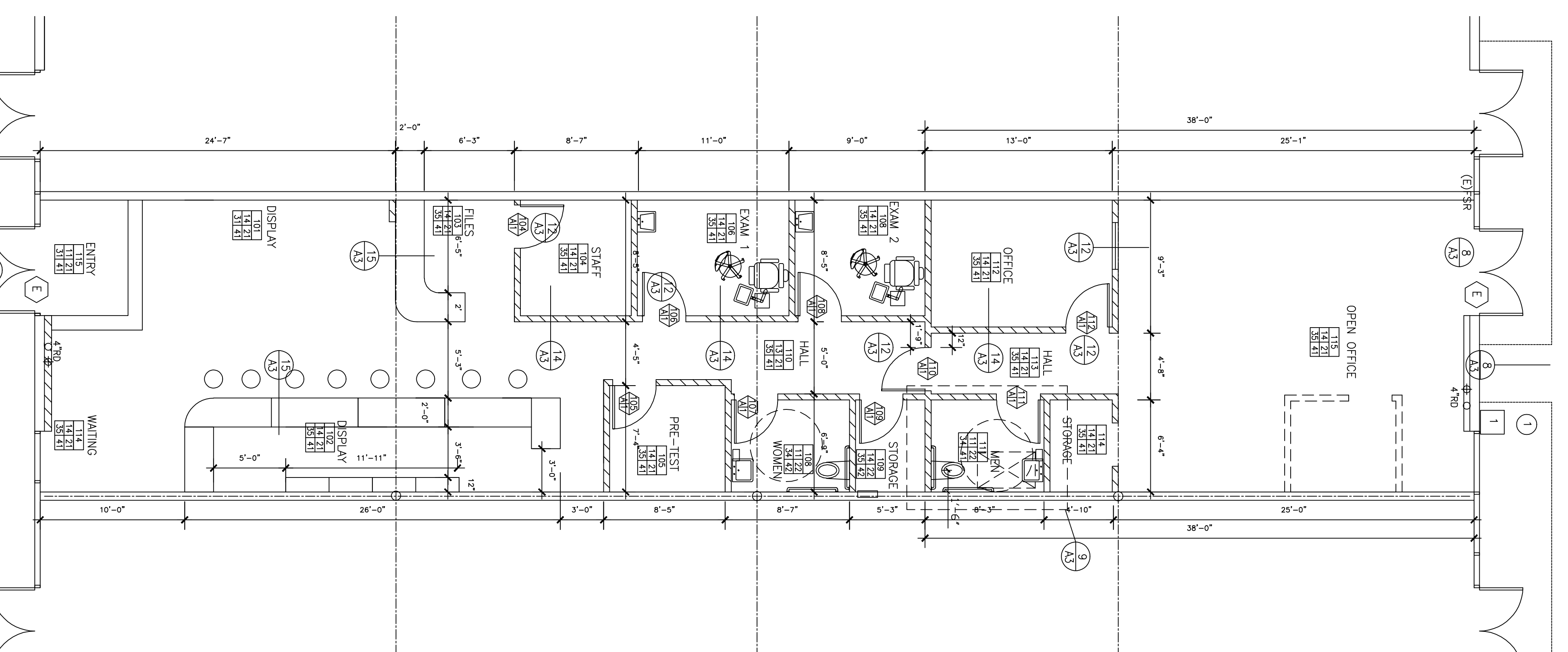
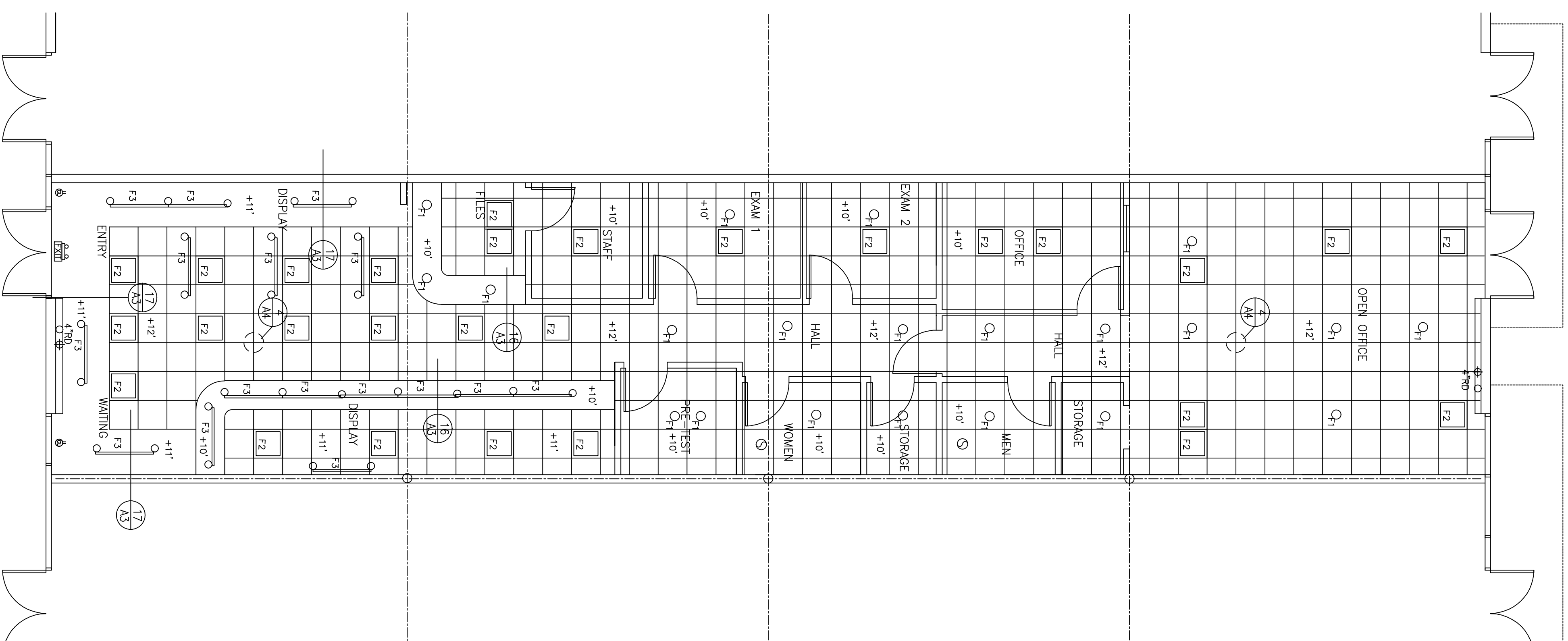
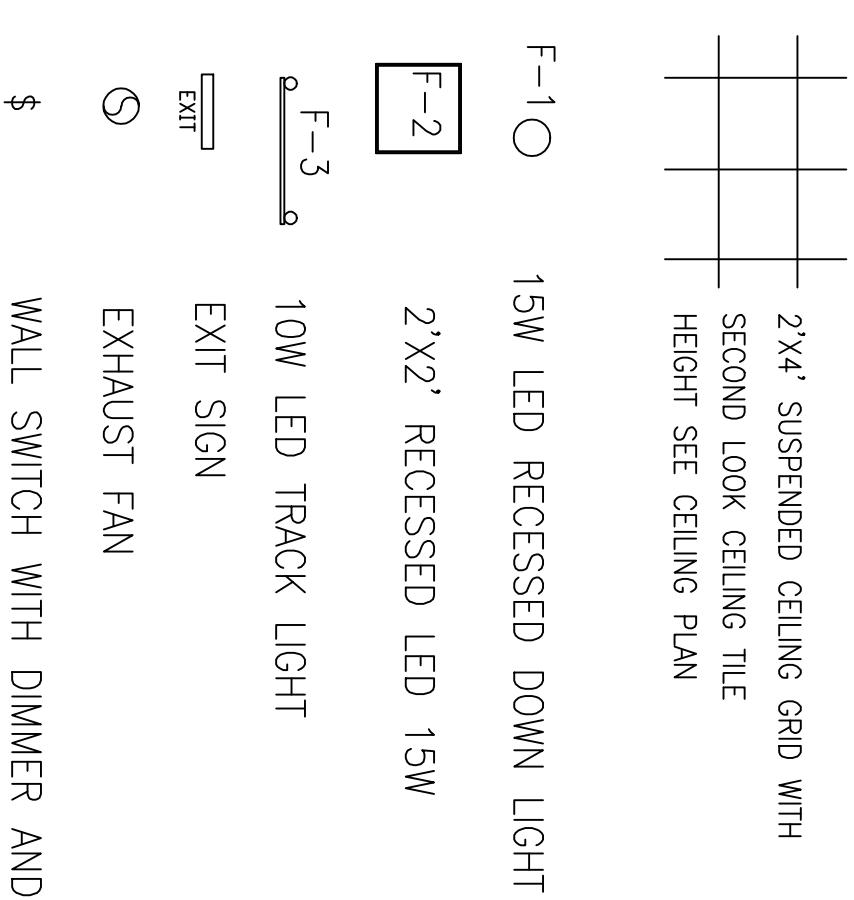
DOOR SCHEDULE

A. 3'-0"x7'-0"x1-3/4" SAND CORE DOOR, WOOD DOOR WITH PREFINISHED BIRCH VENEER SET IN CLEAR WOOD FRAME WITH 12"x18" TEMPERED GLASS VIEWPORT.

HARDWARE SCHEDULE

GROUP 1	179 X 4-1/2 X 4-1/2	SIA
1-1/2 PAIR BUTTS	D50 PD RHODES	BCH
1 LOCKSET (LEVER TYPE)	W9 X	BBW
1 STOP		NOR
GROUP 2	179 X 4-1/2 X 4-1/2	SIA
1-1/2 PAIR BUTTS	D50 PD RHODES	BCH
1 LOCKSET (LEVER TYPE)	W9 X	BBW
1 STOP		NOR
1 CLOSER		

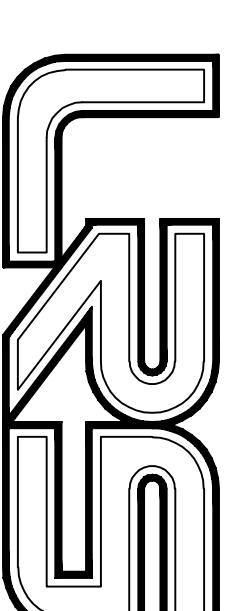
LEGEND:



REVISIONS

ZUZAI OPTOMETRY

6048 STEVENSON BLVD
 FREMONT, CA 94538



LRS ASSOCIATES
 ARCHITECTURE AND PLANNING
 102 PERSIAN DRIVE SUITE 201 SUNNYVALE
 CALIFORNIA 94089
 FAX (408) 746-0386

ARCHITECT

DATE 3-15-2015 PROJECT NO. 37.30009

SCALE SHOWN DRAWN JW

SHEET

A-2

OF SHEETS