



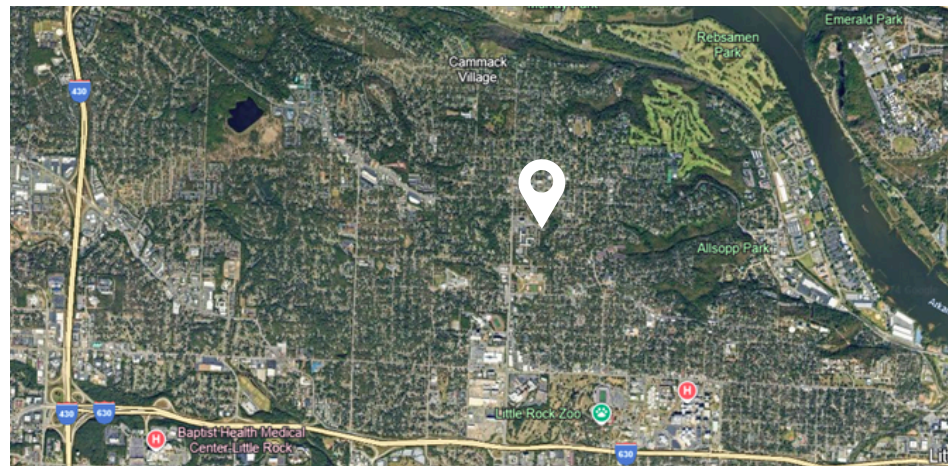
Forest Heights Bldg - 1405 N. Pierce | Little Rock, AR 72207

AVAILABLE

Suite 101	2,913 SF +/- <i>(can be subdivided)</i>
Suite 205	530 SF +/-
Suite 301	2,331 SF +/-
Suite 306	1,838 SF +/-
Suite 307	561 SF +/-
Suite 311	1,867 SF +/-
Suite 312	813 SF +/-
Lease Rate:	\$17.00 - 18.00 SF/yr (Full Service) TI Negotiable

PROPERTY OVERVIEW

Located in the heart of Midtown, Forest Heights Office Building offers a unique blend of convenience and tranquility. Near restaurants, medical, banks & more. Situated on a private drive offering peaceful views and professionally managed with free onsite parking.



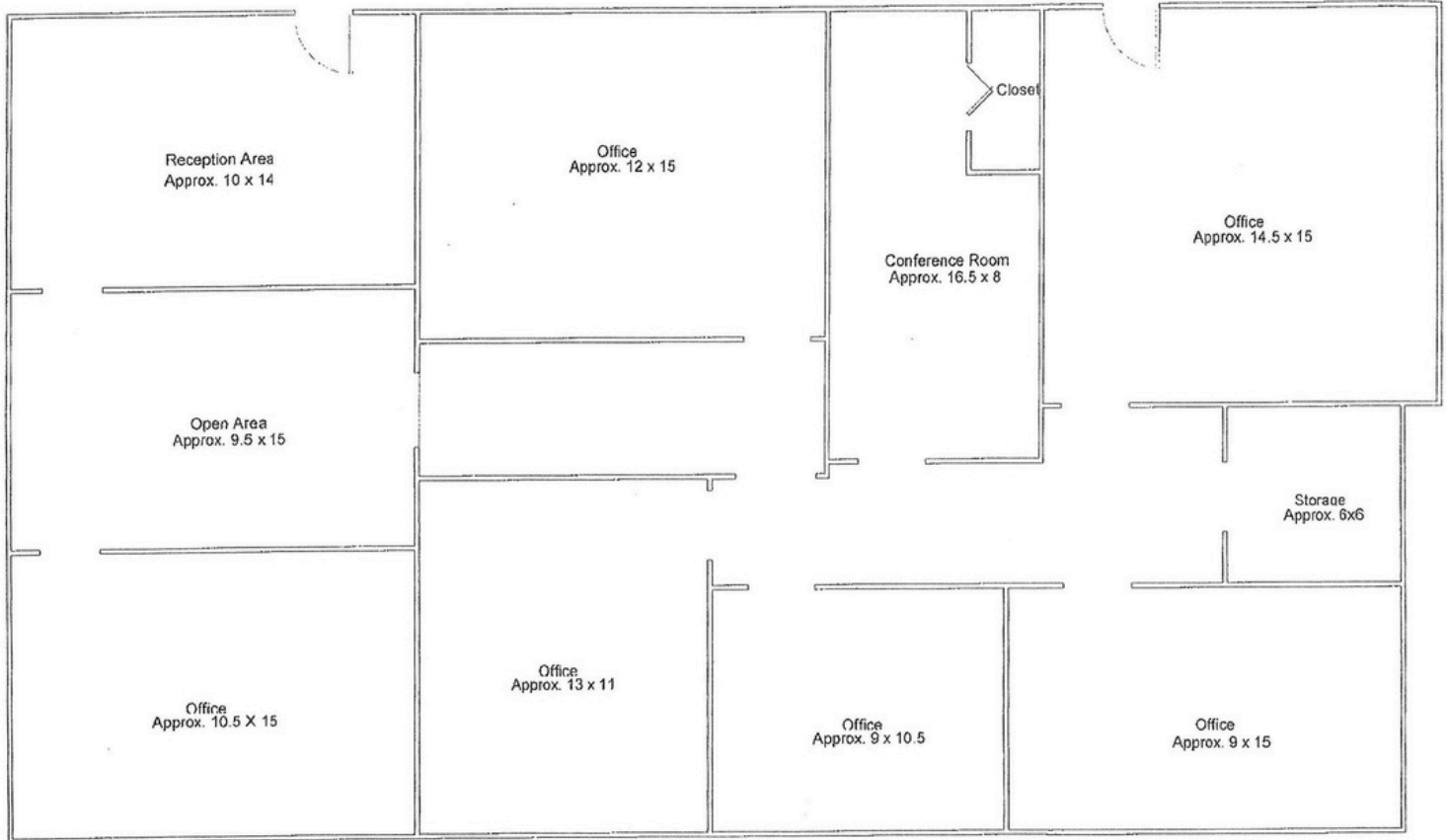


COMMERCIAL & INVESTMENT DIVISION

Floor Plan - Ste. 306

Suite 306
1,838 S.F.

Common Area Hall



Forest Height Office Building
Professionally Leased and Managed by
RPM Management Company, Inc.

Disclosure: Not to scale.

Information is deemed reliable but is not guaranteed. Agency Disclosure: RPM Group is the agent for the owner of the property described herein.

File Num: 99-60-2048

TOM COLE
(C)501.960.3648 | (O)501.664.7807
tocoler@rpmgroup.com

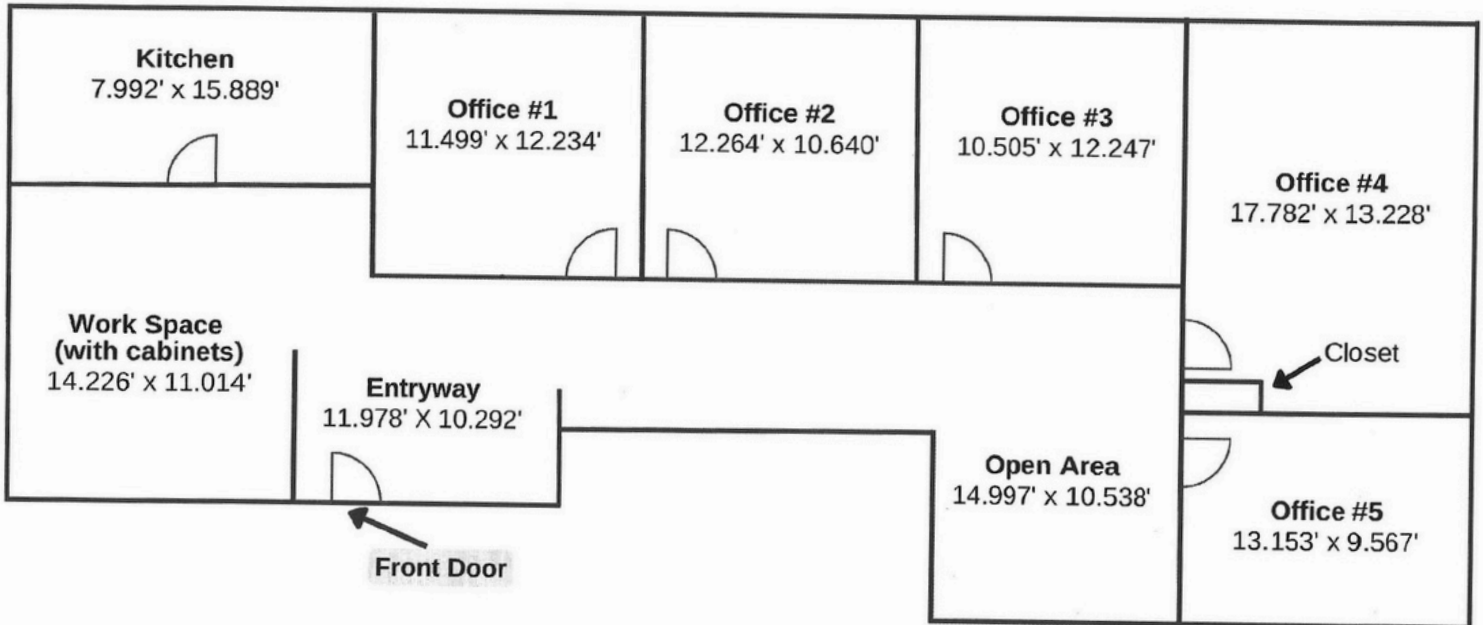
CAROLINE OTWELL
(C)501.749.0330 | (O)501.664.7807
cotwell@rpmgroup.com

1501 N. University Avenue, Ste. 800
Little Rock, AR 72207
501.664.7807 | www.rpmgroup.com



COMMERCIAL & INVESTMENT DIVISION

Floor Plan - Ste. 311



Disclosure: NOT to scale. Measurements may not be accurate.

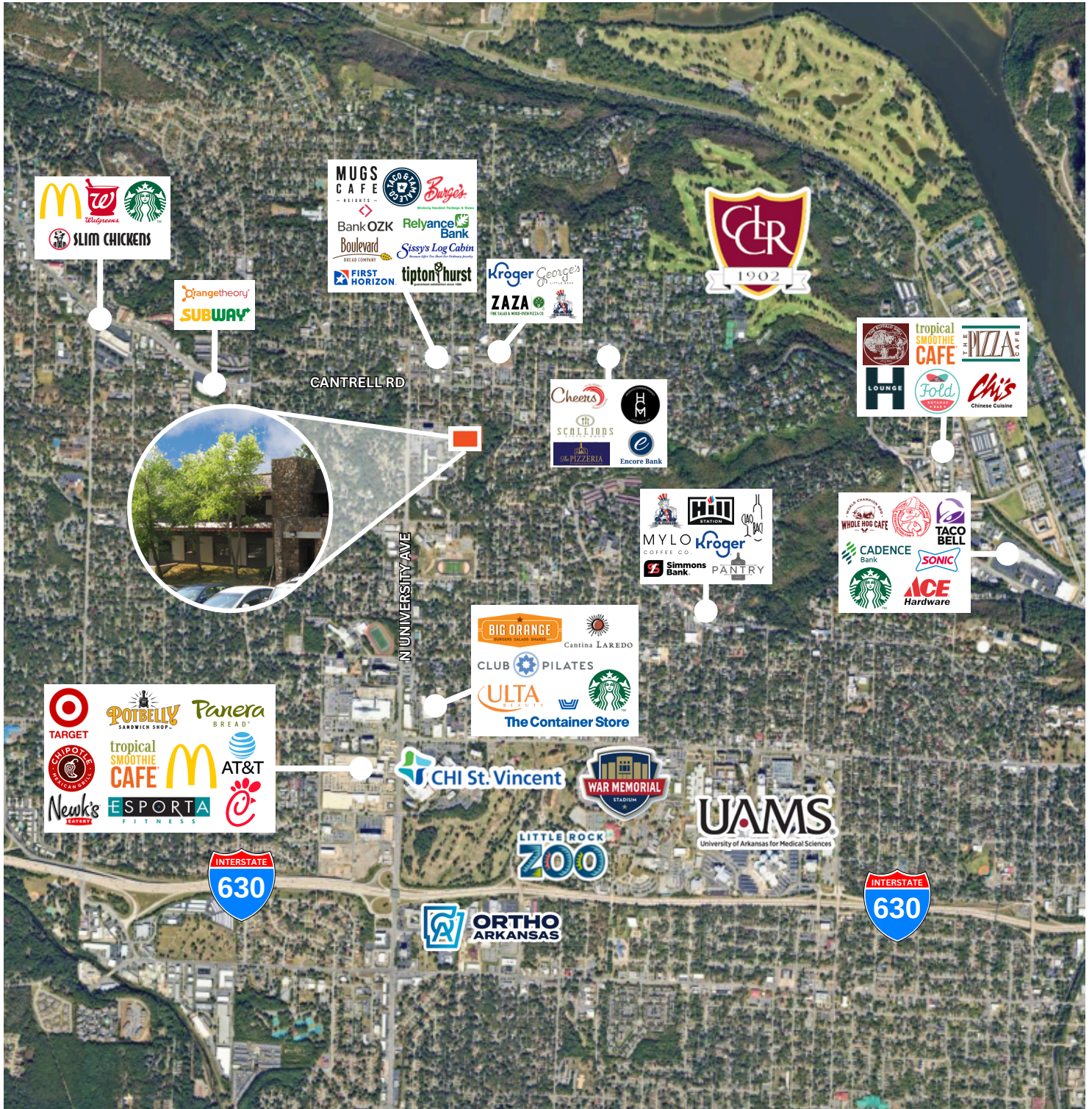
Information is deemed reliable but is not guaranteed. Agency Disclosure: RPM Group is the agent for the owner of the property described herein.

File Num: 99-60-2048

TOM COLE
(C)501.960.3648 | (O)501.664.7807
tocoler@rpmgroup.com

CAROLINE OTWELL
(C)501.749.0330 | (O)501.664.7807
cotwell@rpmgroup.com

1501 N. University Avenue, Ste. 800
Little Rock, AR 72207
501.664.7807 | www.rpmgroup.com



Information is deemed reliable but is not guaranteed. Agency Disclosure: RPM Group is the agent for the owner of the property described herein.

File Num: 99-60-2048

TOM COLE
 (C)501.960.3648 | (O)501.664.7807
 tocole@rpmgroup.com

CAROLINE OTWELL
 (C)501.749.0330 | (O)501.664.7807
 cotwell@rpmgroup.com

1501 N. University Avenue, Ste. 800
 Little Rock, AR 72207
 501.664.7807 | www.rpmgroup.com