



FOR LEASE

59 West 900 North
Springville, Utah 84663

Springville Office

Property Information

- 11,212 SF Available
 - Main Floor: 7,542 SF
 - Second Floor: 3,670 SF
- Building Can be Demised
- Recently Remodeled with Premium Finishes
- High Growth Area of Utah County
- Minutes From I-15

Lease Rate:

\$21.00

/ SF Full Service

CONTACT

Spencer Croshaw

Senior Vice President
+1 801 702 4689
spencer.croshaw@colliers.com



Colliers

2100 Pleasant Grove Blvd., Suite 200
Pleasant Grove, UT 84062
Main: +1 801 947 8300
colliers.com

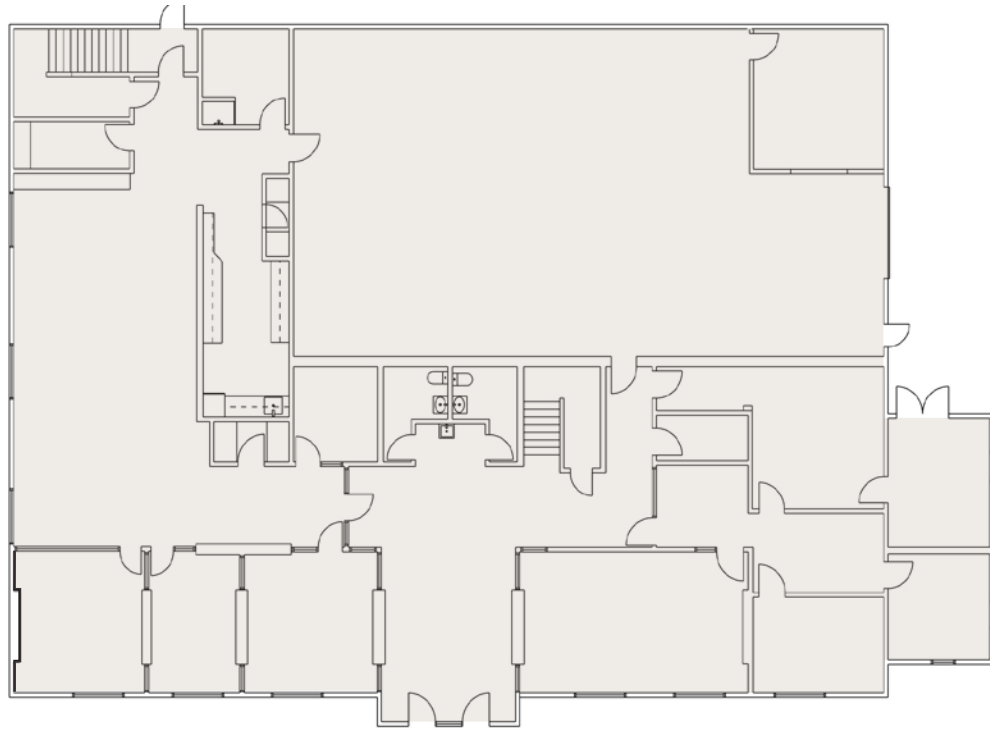
DEMOGRAPHICS	1 MILE	3 MILE	5 MILE
Population			
2025 Estimated	9,495	42,143	114,390
2030 Projected	10,074	44,783	123,311
Households			
2025 Estimated	2,902	12,828	35,349
2030 Projected	3,150	13,929	39,020
Income			
2025 Median HHI	\$90,176	\$94,869	\$81,730
2025 Average HHI	\$116,914	\$117,004	\$107,638
2025 Per Capita	\$36,140	\$35,420	\$33,315

Information provided by ESRI Business Analyst

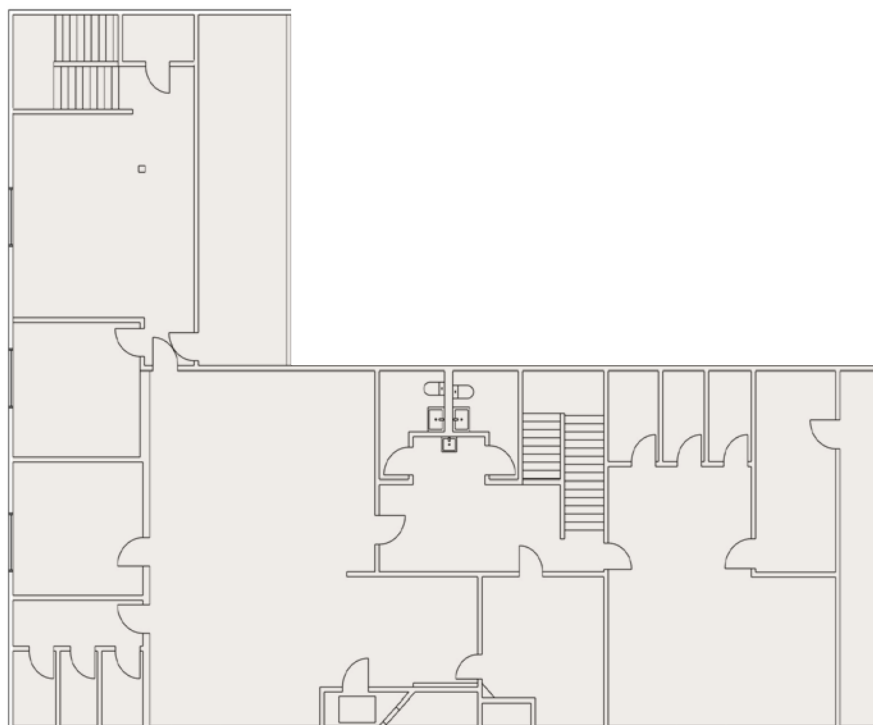
FLOORPLAN

59 W 900 N | Springville, Utah

1st Floor 7,542 SF



2nd Floor 3,670 SF







CONTACT

Spencer Croshaw

Senior Vice President

+1 801 702 4689

spencer.croshaw@colliers.com

Colliers

2100 Pleasant Grove Blvd. | Suite 200

Pleasant Grove, UT 84062

Main: +1 801 610 1300

colliers.com



This document has been prepared by Colliers International for advertising and general information only. Colliers International makes no guarantees, representations or warranties of any kind, expressed or implied, regarding the information including, but not limited to, warranties of content, accuracy and reliability. Any interested party should undertake their own inquiries as to the accuracy of the information. Colliers International excludes unequivocally all inferred or implied terms, conditions and warranties arising out of this document and excludes all liability for loss and damages arising there from. This publication is the copyrighted property of Colliers International and/or its licensor(s). ©2026. All rights reserved.

