



Echelon Centre

555 WEST 8TH AVENUE
VANCOUVER, BC

CBRE

Dan Jordan

Personal Real Estate Corporation


Senior Vice President
CBRE Limited | Office Properties
604 787 4512
dan.jordan@cbre.com



OFFICE SPACE | FOR LEASE
555 WEST 8TH AVENUE
VANCOUVER, BC

Echelon Centre, a premier twin-tower office complex in Vancouver’s Broadway Corridor.

-  **Asking Net Rent**
Call Listing Agent
-  **Additional Rent**
\$17.92 PSF (2026 Estimate)
-  **Parking**
1 stall per 500 SF leased

-  **6th Floor - 6,046 SF**
Full floor available March 1, 2026
- Unit #301 - 4,098 SF**
Available March 1, 2026

Located in the heart of Vancouver’s Broadway Corridor, the Echelon Centre offers exceptional access to urban amenities and transit. Ideally located just steps from the Broadway City Hall Station on the Canada Line and future Millennium Line Broadway Extension, with direct access to major bike routes and the False Creek Seawall, this destination offers seamless connectivity throughout Vancouver and the Lower Mainland.

85


TRANSIT
SCORE

100


WALK
SCORE

95

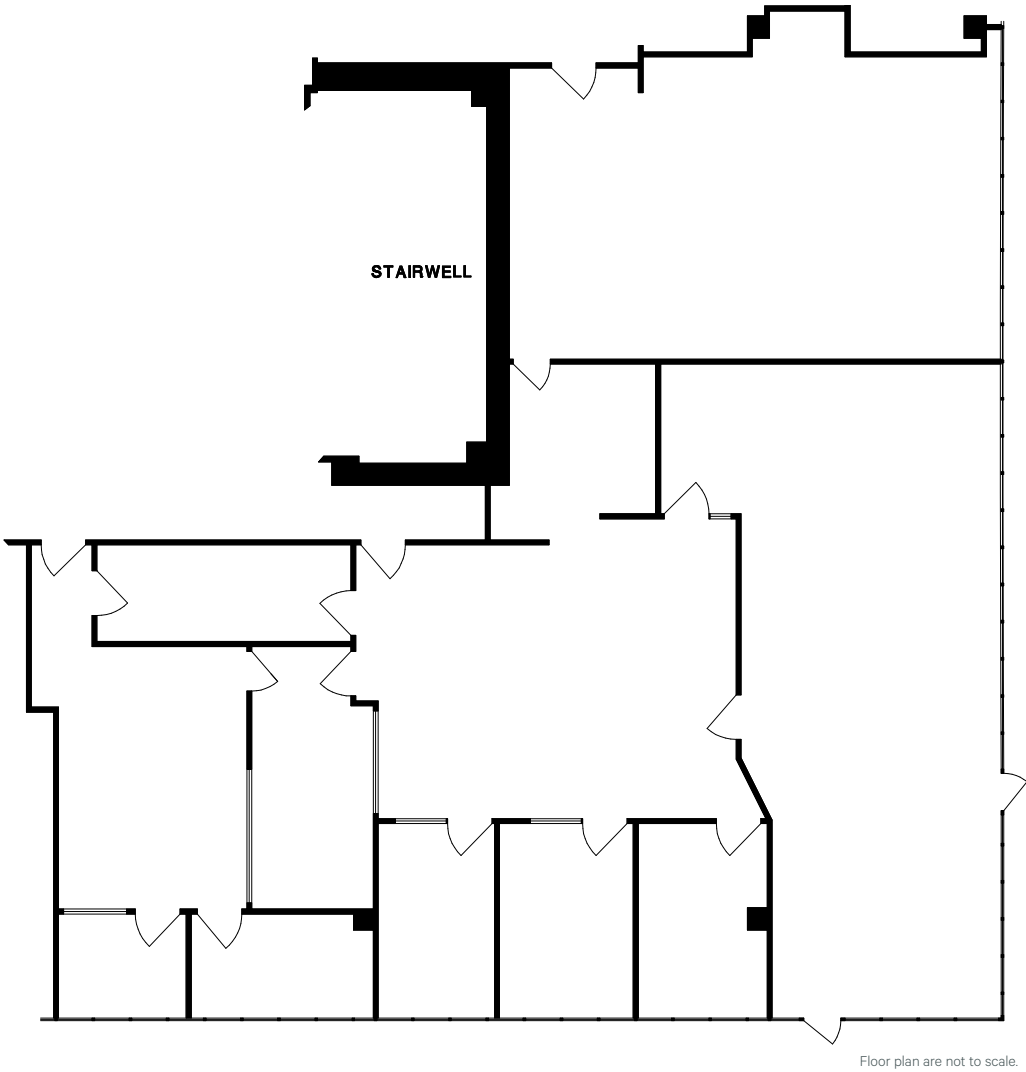

BIKE
SCORE

OFFICE SPACE | FOR LEASE

555 WEST 8TH AVENUE
VANCOUVER, BC

Unit #301

4,098 SF
Available March 1, 2026



Bright corner space featuring several private offices, open work areas, a large storage room, and a clean room. It also offers access to private patios on the south and east sides, bringing in abundant natural light and outdoor appeal.





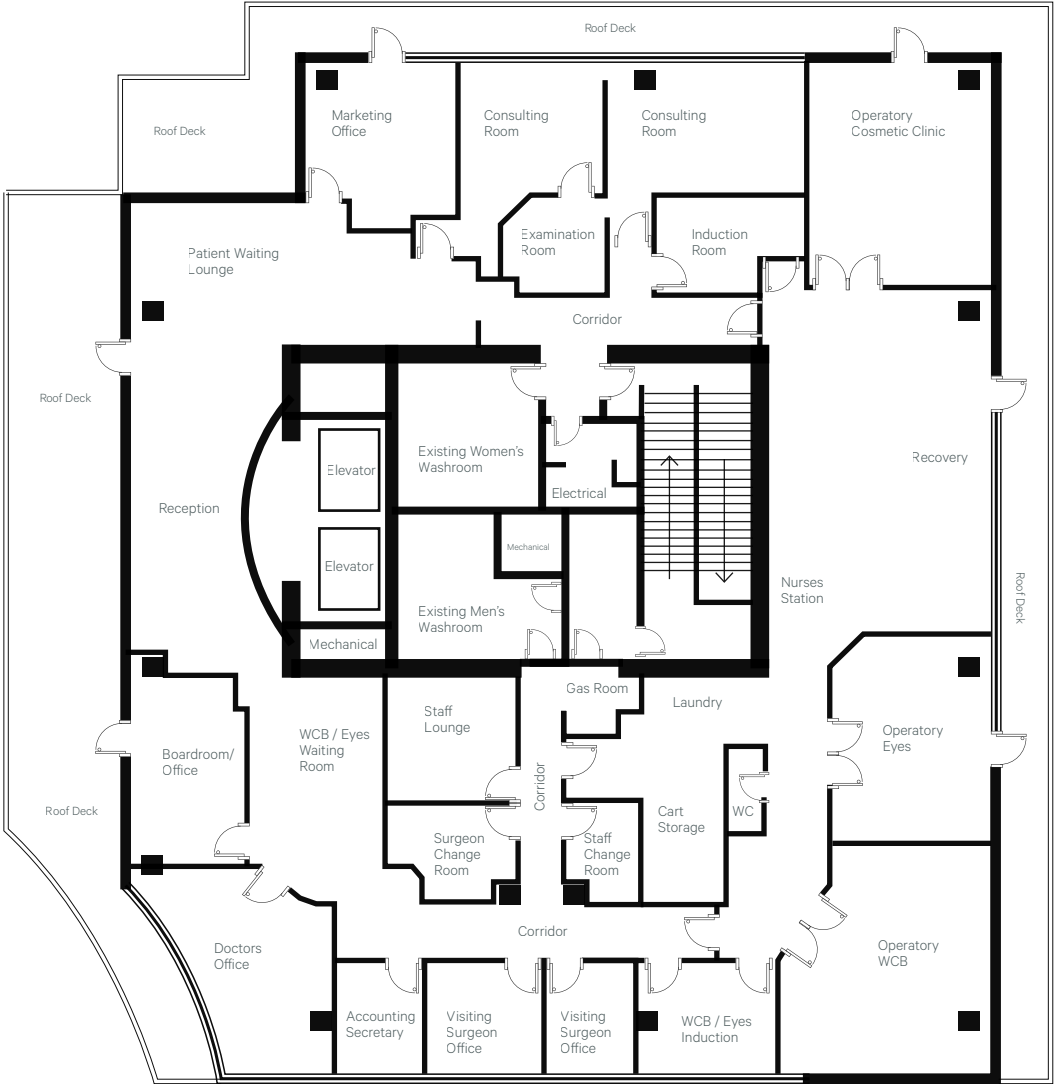
OFFICE SPACE | FOR LEASE

555 WEST 8TH AVENUE
VANCOUVER, BC

6th Floor

Full Floor - 6,046 SF

Available March 1, 2026



Floor plan are not to scale.

The 6th floor is an improved medical space featuring a mix of offices and consult rooms, three operating rooms, and reception and waiting areas. The space also includes a staff lounge and expansive private patios along the West, North, and East sides, offering impressive views and natural light.

OFFICE SPACE | FOR LEASE

CBRE

555 WEST 8TH AVENUE
VANCOUVER, BC

With expansive private patios, stunning city and mountain views, direct access to transit and nearby amenities, and an on-site fitness center and daycare, the Echelon Centre 1 is designed to support productivity and growth for a variety of businesses.



Neighbourhood Amenities

Cafes

Marulilu Cafe
Allegro Coffee Co.
Elysian Coffee Broadway
Starbucks
Caffe Cittadella
Cafe & Life Co
Blenz Coffee

Restaurants

La Taqueria
Peaceful Restaurant
Chipotle Mexican Grill
Hokkaido Ramen Santouka
Mexicano Taco Ltd.
Benkei Ramen Noodle Shop
Pizzamia Gourmet Pizza Bar
Sha Lin Noodle House
Yolks
McDonald's
A&W Restaurant
Hokkaido Ramen Santouka
Pho Extreme Xe Lua
Cactus Club Cafe
Afgan Horsemen Restaurant
Wendy's

Shopping

Lululemon Athletica
Shinola
Change of Scandinavia
Running Room
The North Face
Independent Goldsmith
T-shirt.ca
Best Buy
Canadian Tire
BC Liquor
Homesense

Entertainment

Black Dog Video
Cineplex Inc.
The Park Theatre
Fox Cabaret
Open Studios
Elan Fine Art
Science World
BC Sports Hall of Fame
Vancouver International Film Centre
Pacific Coach - Day Tours
Vancouver New Music Society

Banking

TD Bank
TBC Royal Bank
CIBC
Vancity Savings Credit Union
Coast Capital
Coast Capital Savings
TD Bank Financial Group
Kingmark Current Exchange Inc.
HSBC of Canada
Central 1

Contact:

Dan Jordan

Personal Real Estate Corporation

Senior Vice President
CBRE Limited | Office Properties
604 787 4512
dan.jordan@cbre.com

CBRE Limited | 1021 West Hastings Street #2500 | Vancouver, BC | www.cbre.ca

This disclaimer shall apply to CBRE Limited, Real Estate Brokerage, and to all other divisions of the Corporation; to include all employees and independent contractors ("CBRE"). The information set out herein, including, without limitation, any projections, images, opinions, assumptions and estimates obtained from third parties (the "Information") has not been verified by CBRE, and CBRE does not represent, warrant or guarantee the accuracy, correctness and completeness of the Information. CBRE does not accept or assume any responsibility or liability, direct or consequential, for the Information or the recipient's reliance upon the Information. The recipient of the Information should take such steps as the recipient may deem necessary to verify the Information prior to placing any reliance upon the Information. The Information may change and any property described in the Information may be withdrawn from the market at any time without notice or obligation to the recipient from CBRE. CBRE and the CBRE logo are the service marks of CBRE Limited and/or its affiliated or related companies in other countries. All other marks displayed on this document are the property of their respective owners. All Rights Reserved.

Mapping Sources: Canadian Mapping Services canadamapping@cbre.com; DMTI Spatial, Environics Analytics, Microsoft Bing, Google Earth.
Some content was originally generated by AI and modified by the author