

CONCOURSE CENTER

IN THE HEART OF THE
WESTSHORE BUSINESS DISTRICT

OFFICE SPACE
FOR LEASE

Owned & Managed by



DILWEG

Leased by

CBRE



FEATURES

- Four building office park totaling over 294,749 SF, located in the Westshore Business District
- Close proximity to hotels, shopping and quality residential areas
- Minutes from Tampa International Airport, all major interstate systems and expansive amenity base
- 4.0 parking spaces per 1,000 SF, including 2 covered parking garages
- On-site Property Management Team
- On-site cafe and outdoor seating area in natural park setting with oaks and water features
- On-site conference center
- Easy access to abundant labor force from all surrounding counties
- Energy Star® rated

Steps Away from



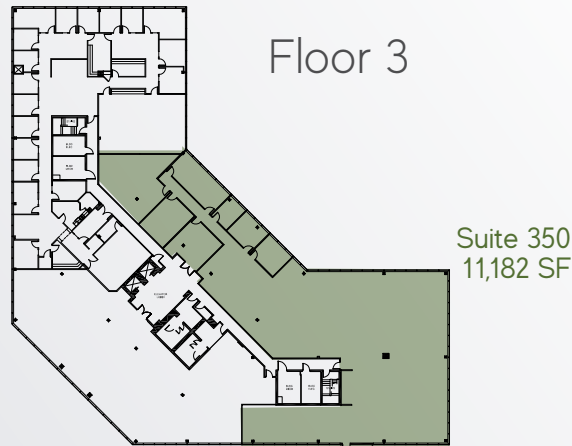
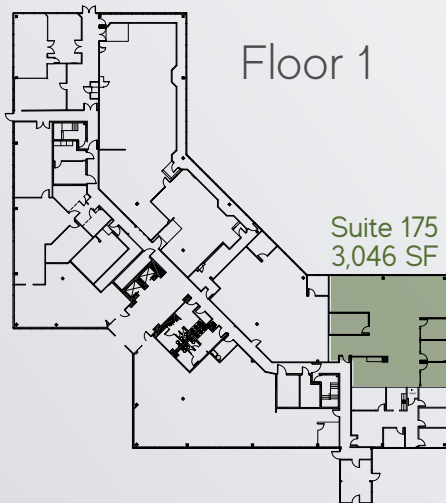
CONCOURSE CENTER



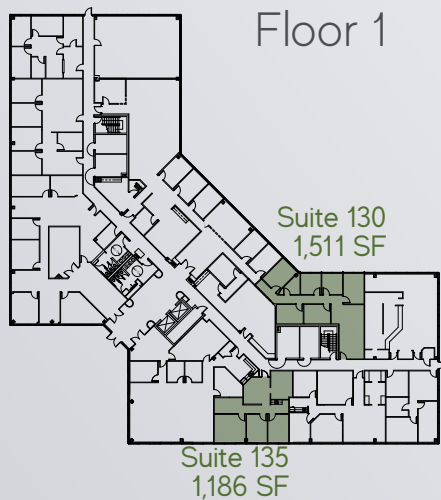
FLOORPLANS



Building I 3501 E. Frontage Road



Building III 3505 E. Frontage Road



**AVAILABILITY FROM
971 - 73,180 SF**

CONCOURSE CENTER I

175	3,046 SF
250	2,893 SF
350	11,182 SF

CONCOURSE CENTER III

130	1,511 SF
135	1,186 SF
250	4,595 SF

OFFICE SPACE FOR LEASE

CONCOURSE CENTER

IN THE HEART OF THE WESTSHORE BUSINESS DISTRICT

3501-3507 EAST FRONTAGE ROAD
TAMPA, FL 33607



For more information, contact our professionals:

ROXANNE KEMPH
Senior Vice President
+1 813 787 1068
roxanne.kemph@cbre.com

KELLEY MATHESON
Senior Vice President
+1 813 273 8489
kelley.matheson@cbre.com

CBRE Inc., Licensed Real Estate Broker

Owned & Managed by



Leased by



© 2026 CBRE, Inc. All rights reserved. This information has been obtained from sources believed reliable, but has not been verified for accuracy or completeness. You should conduct a careful, independent investigation of the property and verify all information. Any reliance on this information is solely at your own risk. CBRE and the CBRE logo are service marks of CBRE, Inc. All other marks displayed on this document are the property of their respective owners. Photos herein are the property of their respective owners. Use of these images without the express written consent of the owner is prohibited.