

CVCB



CENTRAL
VALLEY
COMMERCIAL
BROKERS, INC

FOR LEASE

1031 N. Demaree St., Visalia



PROPERTY DETAILS

- **\$1.60/ft Modified Gross**
- **4,800 SF**
- **Healthcare - Medical Office**
- **Fully Improved**
- **Private Offices**

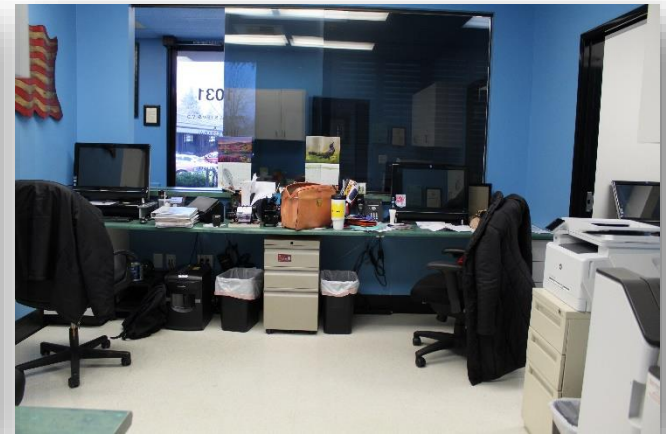
HENRY E. MENDEZ, JR.

CA RE #01127054 CA DRE #02084340 • Broker/ Principal
hmendez@cvcbrokers.com • 661.404.4090 Office
930 Truxtun Ave., Suite 101, Bakersfield, CA 93301

The information contained herein may have been obtained from sources other than CVCB. We have not verified such information and make no guarantees, warranties, or representations about such information. It is your responsibility to independently confirm its accuracy and completeness prior to purchasing/leasing the property.

FOR LEASE – Medical Office

1031 N. Demaree St., Visalia, Ca



HENRY E. MENDEZ, JR.
CA RE #01127054 CA DRE #02084340 • Broker/ Principal
hmendez@cvcbrokers.com • 661.404.4090 Office
930 Truxtun Ave., Suite 101, Bakersfield, CA 93301

The information contained herein may have been obtained from sources other than CVCB. We have not verified such information and make no guarantees, warranties, or representations about such information. It is your responsibility to independently confirm its accuracy and completeness prior to purchasing/leasing the property.

FOR LEASE – Medical Office

1031 N. Demaree St., Visalia, Ca



HENRY E. MENDEZ, JR.

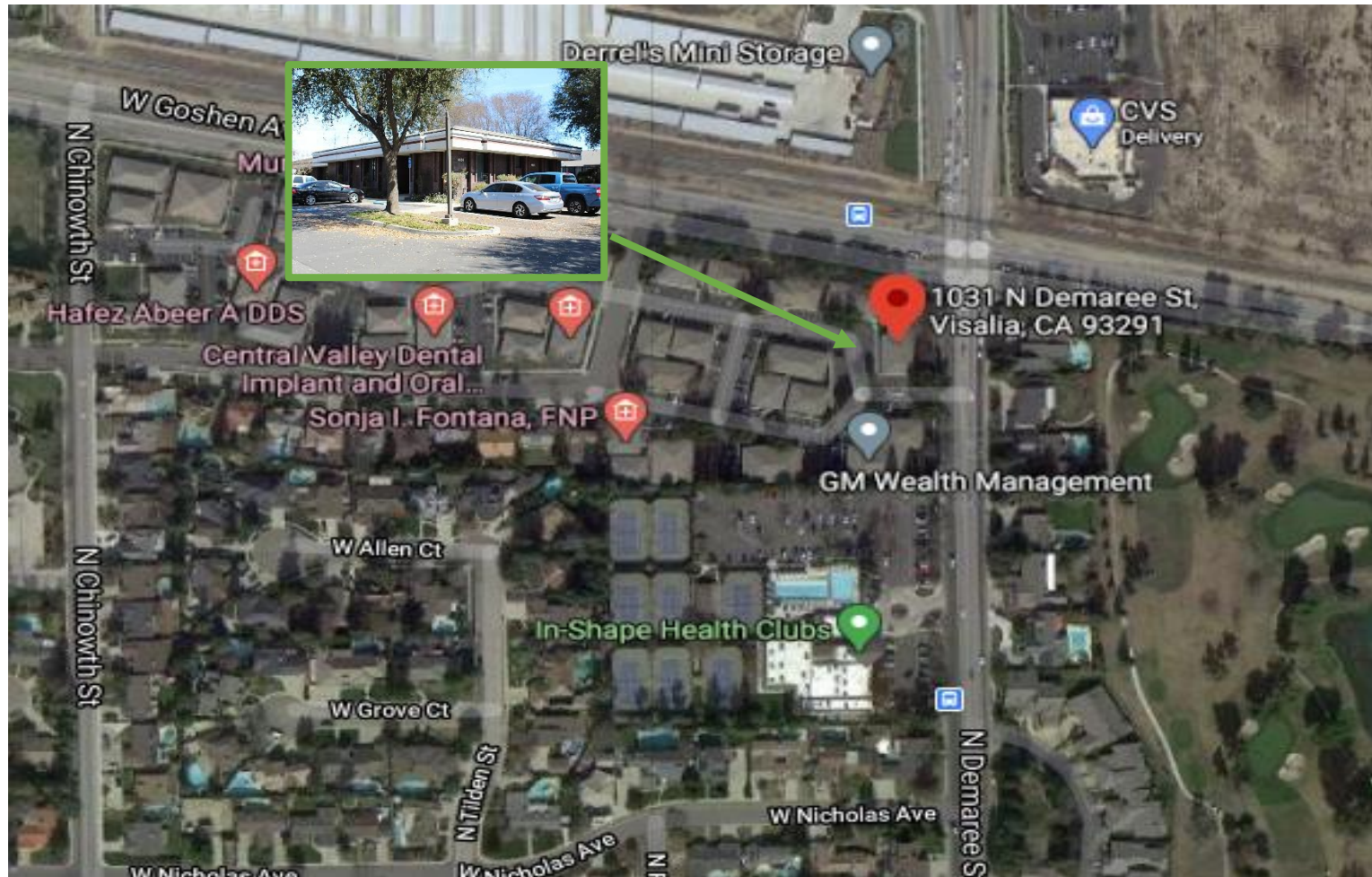
CA RE #01127054 CA DRE #02084340 • Broker/ Principal
hmendez@cvcbrokers.com • 661.404.4090 Office
930 Truxtun Ave., Suite 101, Bakersfield, CA 93301

The information contained herein may have been obtained from sources other than CVCB. We have not verified such information and make no guarantees, warranties, or representations about such information. It is your responsibility to independently confirm its accuracy and completeness prior to purchasing/leasing the property.

FOR LEASE – Medical Office

1031 N. Demaree St., Visalia, Ca

Aerial Map



HENRY E. MENDEZ, JR.

CA RE #01127054 CA DRE #02084340 • Broker/ Principal
hmendez@cvcbrokers.com • 661.404.4090 Office
930 Truxtun Ave., Suite 101, Bakersfield, CA 93301

The information contained herein may have been obtained from sources other than CVCB. We have not verified such information and make no guarantees, warranties, or representations about such information. It is your responsibility to independently confirm its accuracy and completeness prior to purchasing/leasing the property.

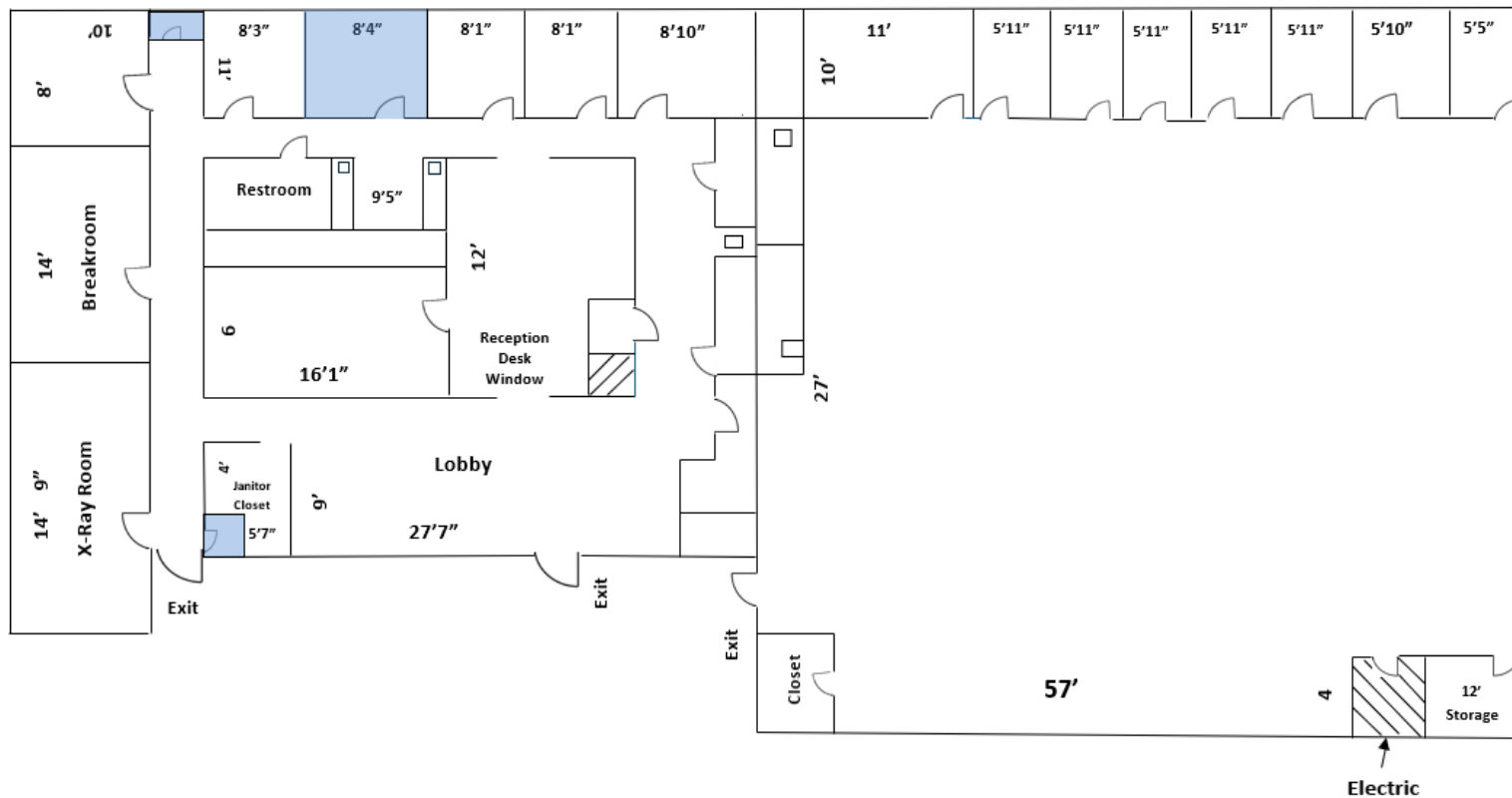
FOR LEASE – Medical Office

1031 N. Demaree St., Visalia, Ca

Floor Plan

Demaree

W. Goshen Ave.



HENRY E. MENDEZ, JR.

CA RE #01127054 CA DRE #02084340 • Broker/ Principal
hmendez@cvcbrokers.com • 661.404.4090 Office
930 Truxtun Ave., Suite 101, Bakersfield, CA 93301

The information contained herein may have been obtained from sources other than CVCB. We have not verified such information and make no guarantees, warranties, or representations about such information. It is your responsibility to independently confirm its accuracy and completeness prior to purchasing/leasing the property.