



1150 Northbrook

Treose, PA 19053

Highlights

- 26,435 SF available on the 2nd floor
- 10,000 SF plug and play space available
- Class A building with newly renovated lobby

Amenities



Tenant lounge with grab and go snacks & state of the art conference center (capacity of 40 people)



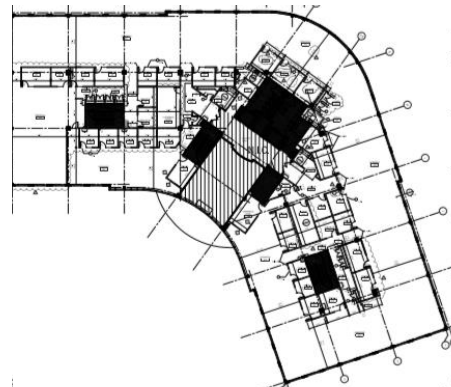
Newly upgraded MERV-11 filtration systems for optimized indoor airflow and healthy working environments



Covered parking available



26,435 SF available + in-place furniture



Patrick Grenko

+1 215 399 1803
patrick.grenko@am.jll.com

Tom Weitzel

+1 215 399 1840
tom.weitzel@am.jll.com

Jones Lang LaSalle Brokerage, Inc. | 1650 Arch Street Street, Suite 2500, Philadelphia, PA 19103
+1 215 988 5500

Although information has been obtained from sources deemed reliable, neither Owner nor JLL makes any guarantees, warranties or representations, express or implied, as to the completeness or accuracy as to the information contained herein. Any projections, opinions, assumptions or estimates used are for example only. There may be differences between projected and actual results, and those differences may be material. The Property may be withdrawn without notice. Neither Owner nor JLL accepts any liability for any loss or damage suffered by any party resulting from reliance on this information. If the recipient of this information has signed a confidentiality agreement regarding this matter, this information is subject to the terms of that agreement. ©2021. Jones Lang LaSalle IP, Inc. All rights reserved.