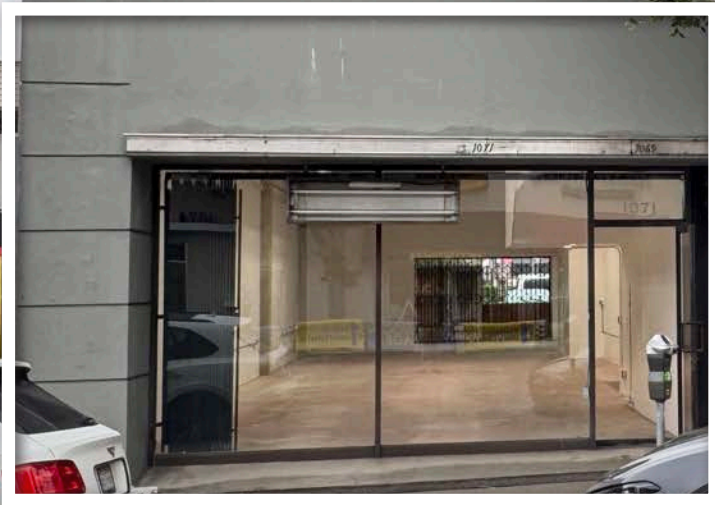


1071 GAYLEY AVENUE  
LOS ANGELES, CA 90024



COMMERCIAL  
ASSET GROUP



RECENTLY RENOVATED PRIME  
WESTWOOD RETAIL SPACE FOR LEASE



These materials are based on information and content provided by others, which we believe are accurate. No guarantee, warranty or representation is made by Commercial Asset Group, Inc. or its personnel. All interested parties must independently verify accuracy and completeness. As well, any projections, assumptions, opinion, or estimates are used for example only and do not represent the current or future performance of the identified property. Your tax, financial, legal and toxic substance advisors should conduct a careful investigation of the property and its suitability for your needs, including land use limitations. The property is subject to prior lease, sale, change in price, or withdrawal from the market without notice.

## **SPACE SIZE**

±2,294 SF

## **LEASE RATE**

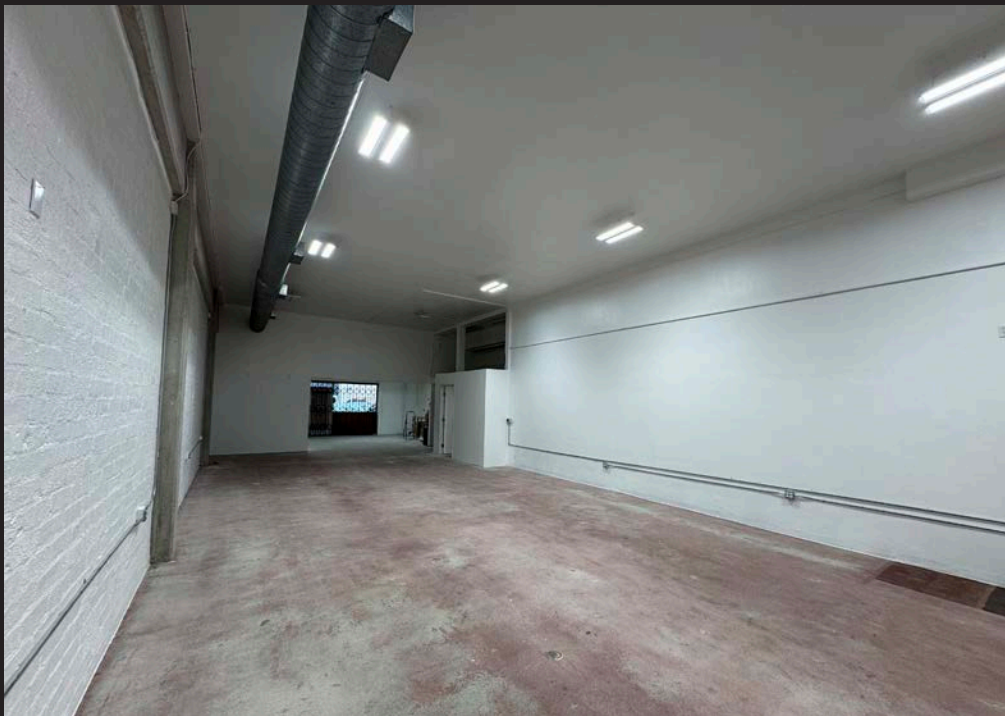
\$4.00 PSF/MO, MG

## **AVAILABLE**

IMMEDIATELY

- **PRIME WESTWOOD VILLAGE LOCATION**
- **RECENTLY RENOVATED**
- **ICONIC BICYCLE LOCATION AND NEXT TO LEGENDARY WESTWOOD TENNIS SHOP & OAKLEY'S BARBER SHOP**
- **SITUATED AMONGST AN ENORMOUS STUDENT POPULATION, MILLIONS OF SQUARE FEET OF OFFICE, MAJOR HOSPITAL, MULTI-MILLION DOLLAR HOMES & FUTURE HOME OF 2028 OLYMPIC VILLAGE**
- **SHORT WALK TO UPCOMING METRO STATION**



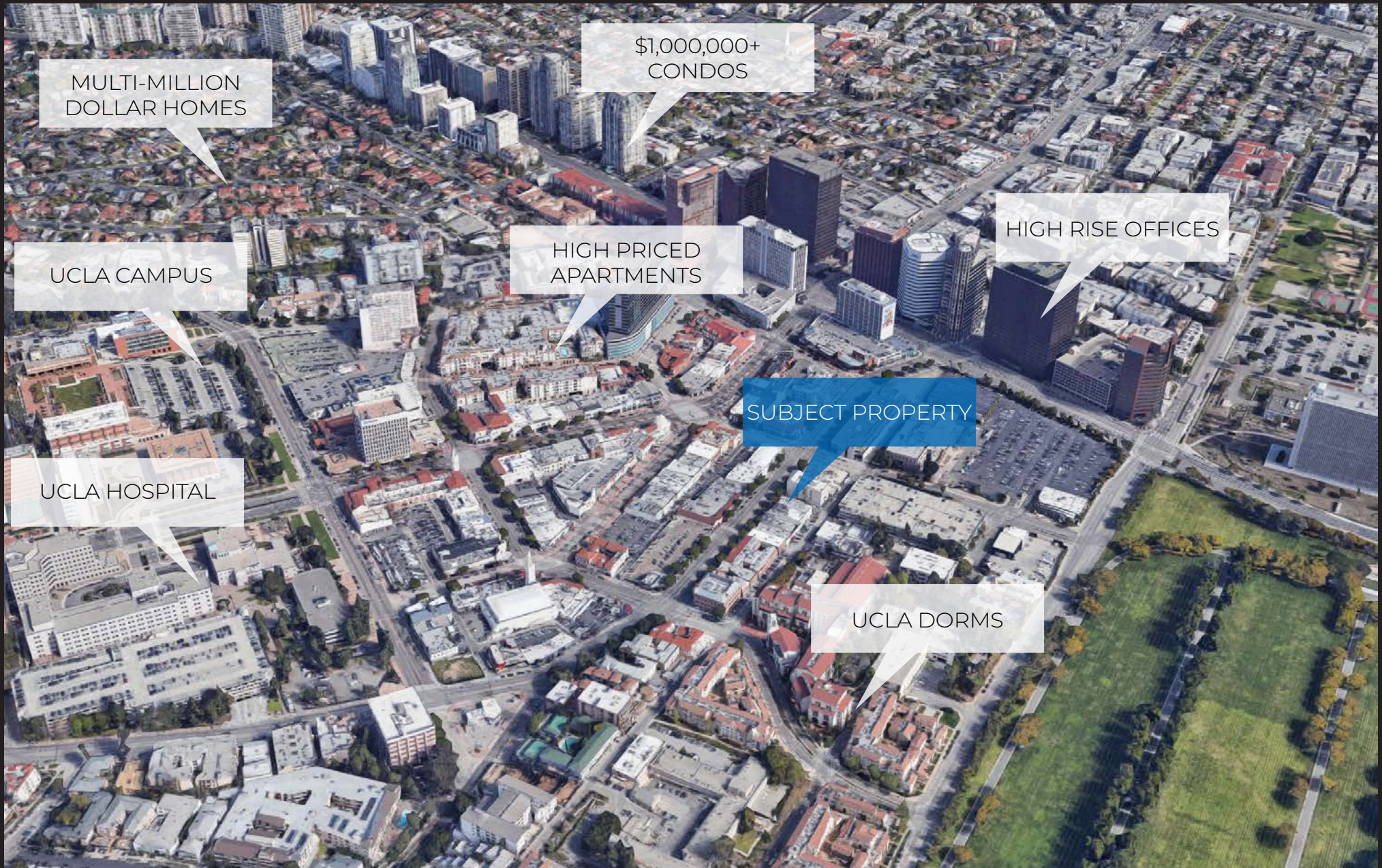


INTERIOR PHOTOS









AERIAL





COMMERCIAL  
ASSET GROUP



**DAVID ASCHKENASY**  
EXECUTIVE VICE PRESIDENT  
P 310.272.7381  
E [DAVIDA@CAGRE.COM](mailto:DAVIDA@CAGRE.COM)  
LIC. 01714442

**DAVID ICKOVICS**  
PRINCIPAL  
P 310.272.7380  
E [DJI@CAGRE.COM](mailto:DJI@CAGRE.COM)  
LIC. 01315424

**SHEELA SHOUHED**  
DIRECTOR  
P 310.272.7383  
E [SHEELA@CAGRE.COM](mailto:SHEELA@CAGRE.COM)  
LIC. 02043384

**COMMERCIAL ASSET GROUP**  
1801 CENTURY PARK EAST, STE 1550  
LOS ANGELES, CA 90067  
P 310.275.8222 F 310.275.8223  
[WWW.CAGRE.COM](http://WWW.CAGRE.COM) LIC. 01876070