

FOR SALE

8561 Aaron Ln

Southaven, MS 38671

Approximately 15,000 SF
of Office/Flex Space



Matt Denny, SIOR
Senior Vice President
+1 901 291 5407
matthew.denny@jll.com

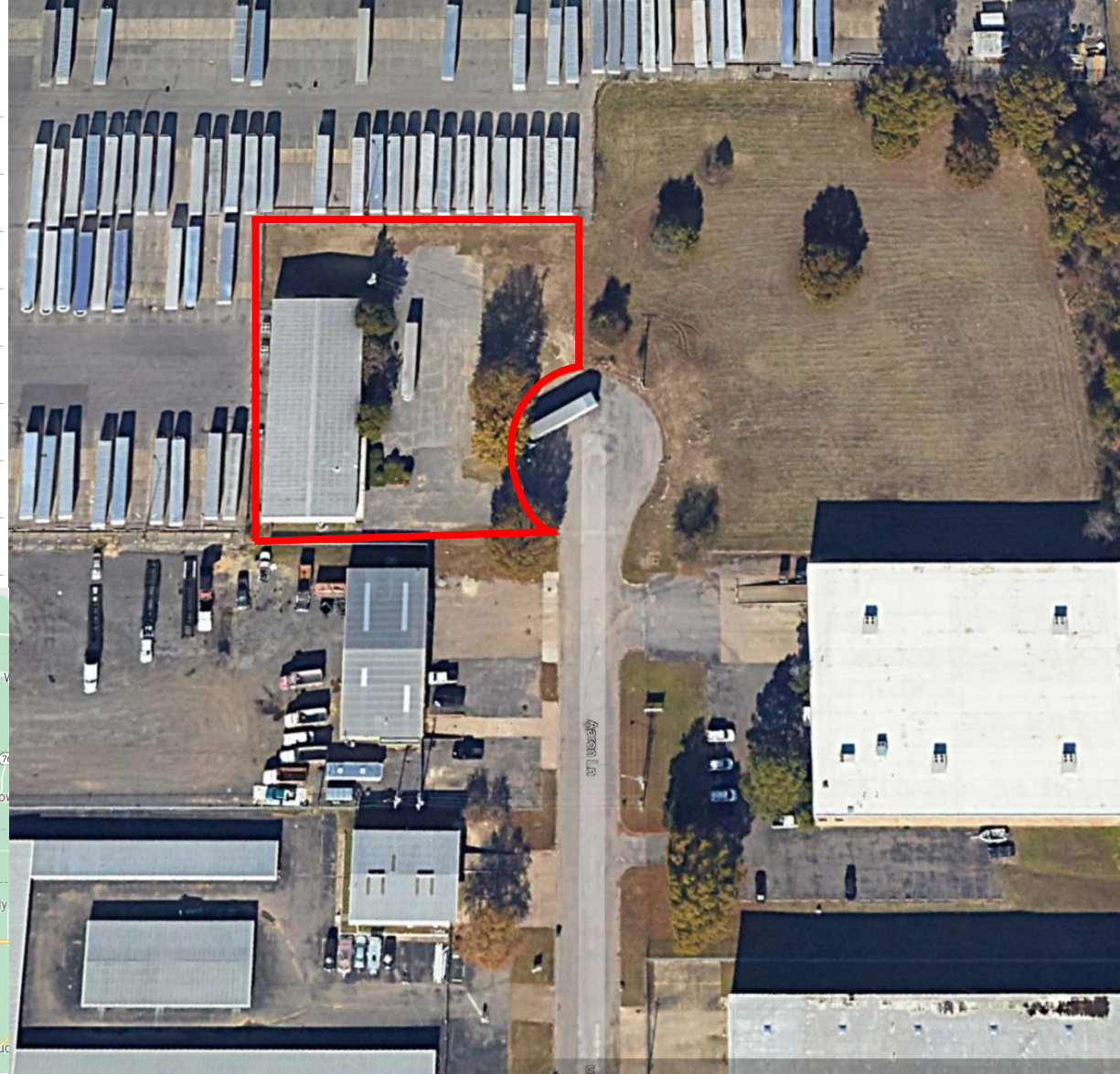
Jack Wohrman, SIOR
Managing Director
+ 1 901 261 2611
jack.wohrman@jll.com

Russ Westlake
Senior Managing Director
+1 901 261 2613
russ.westlake@jll.com



Property Specifications

Building size	Approximately 15,000 SF
Available SF	Approximately 15,000 SF
Parcel size	1 Acre
Office SF	Approximately 13,500 SF
Flex space	Approximately 1,500 SF
Dock doors	1 (half dock)
Car parking	+/- 25 spaces
Built	1997



Contact

Matt Denny, SIOR
Senior Vice President
+1 901 291 5407
matthew.denny@jll.com

Jack Wohrman, SIOR
Managing Director
+1 901 261 2611
jack.wohrman@jll.com

Russ Westlake
Senior Managing Director
+1 901 261 2613
russ.westlake@jll.com



Although information has been obtained from sources deemed reliable, JLL does not make any guarantees, warranties or representations, express or implied, as to the completeness or accuracy as to the information contained herein. Any projections, opinions, assumptions or estimates used are for example only. There may be differences between projected and actual results, and those differences may be material. JLL does not accept any liability for any loss or damage suffered by any party resulting from reliance on this information. If the recipient of this information has signed a confidentiality agreement with JLL regarding this matter, this information is subject to the terms of that agreement. ©2023. Jones Lang LaSalle IP, Inc. All rights reserved.

Jones Lang LaSalle Brokerage, Inc. | MS RE License#19069 | +1 901 261 2600 | 6410 Poplar Ave, Suite 350 Memphis, TN 38119